

TANTO AMOR

TRUMPET I

SHAILA DURCAL
TRANSCRIBED: M. SITAL

$\text{♩} = 80$

Musical score for Trumpet I, featuring a key signature of three sharps (F#, C#, G#) and a 4/4 time signature. The tempo is marked as quarter note = 80. The score consists of seven staves of music. The first staff begins with a treble clef and a 4/4 time signature. The second staff starts at measure 6 and includes a circled 'A' above a measure rest and a '6' below the staff. The third staff starts at measure 18. The fourth staff starts at measure 25 and includes a circled 'B' above a measure rest and a '3' below the staff. The fifth staff starts at measure 34. The sixth staff starts at measure 41 and includes a circled 'C' above a measure rest, a '3' below the staff, and a '2' below the staff. The seventh staff starts at measure 60 and ends with a double bar line.

TANTO AMOR

TRUMPET II

SHAILA DURCAL
TRANSCRIBED: M. SITAL

♩=80

6

(A) 6

18

(B) 3

25

34

41

(C) 3 2

60

TANTO AMOR

VIOLIN I

SHAILA DURCAL
TRANSCRIBED: M. SITAL

$\text{♩} = 80$

(A) Pizz.

15 Arco

24 (B) Pizz.

32 Arco

41

49 (C)

58

TANTO AMOR

VIOLIN II

SHAILA DURCAL

TRANSCRIBED: M. SITAL

$\text{♩} = 80$

Musical staff in treble clef with a key signature of two sharps (F# and C#) and a 4/4 time signature. The tempo is marked as quarter note = 80. The staff contains measures 1 through 8, featuring a melodic line with eighth and sixteenth notes and rests.

(A) Pizz.

Musical staff in treble clef with a key signature of two sharps and a 4/4 time signature. It starts with a circled letter 'A' and the instruction 'Pizz.' (Pizzicato). The staff contains measures 9 through 14, consisting of a rhythmic pattern of eighth notes.

ARCO

15

Musical staff in treble clef with a key signature of two sharps and a 4/4 time signature. It starts with the instruction 'ARCO' (Arco). The staff contains measures 15 through 23, featuring a series of chords and some melodic fragments.

(B) Pizz.

24

Musical staff in treble clef with a key signature of two sharps and a 4/4 time signature. It starts with a circled letter 'B' and the instruction 'Pizz.' (Pizzicato). The staff contains measures 24 through 31, featuring a rhythmic pattern of eighth notes.

ARCO

32

Musical staff in treble clef with a key signature of two sharps and a 4/4 time signature. It starts with the instruction 'ARCO' (Arco). The staff contains measures 32 through 40, featuring a series of chords and some melodic fragments.

41

Musical staff in treble clef with a key signature of two sharps and a 4/4 time signature. The staff contains measures 41 through 48, featuring a series of chords and some melodic fragments.

(C)

49

Musical staff in treble clef with a key signature of two sharps and a 4/4 time signature. It starts with a circled letter 'C'. The staff contains measures 49 through 57, featuring a series of chords and some melodic fragments.

58

Musical staff in treble clef with a key signature of two sharps and a 4/4 time signature. The staff contains measures 58 through 65, featuring a series of chords and some melodic fragments.

TANTO AMOR

VIOLIN III

SHAILA DURCAL

TRANSCRIBED: M. SITAL

$\text{♩} = 80$



(A)

Pizz.



ARCO



15

(B)

Pizz.



24

ARCO



32



41

(C)



49



58

TANTO AMOR

HARP

SHAILA DURCAL
TRANSCRIBED: M. SITAL

♩=80

HARP

Hp.

Hp.

Hp.

Hp.

Hp.

2

Hp. 37

Hp. 44

Hp. 51

Hp. 59

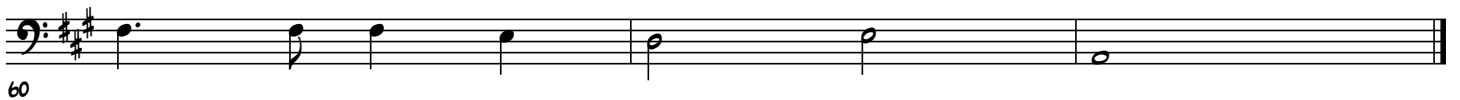
TANTO AMOR

GUITARRON

SHAILA DURCAL

TRANSCRIBED: M. SITAL

♩=80



TANTO AMOR

ARMONIA

SHAILA DURCAL
TRANSCRIBED: M. SITAL

$\text{♩} = 80$

4/4

F#m D E7 A F#m D Bm7 E7

(A) A D Bm7 E7

A D Bm7 E7

F#m7 D E7 A F#m D E7

(B) A D Bm7 E7

A D Bm7 E7

F#m7 D E7 A F#m D E7

F#m7 D E7 A F#m D E7

(C) F#m D A E7 F#m D E7

A F#m D E7 F#m D E7 A

Detailed description: This sheet music provides guitar chord diagrams for the song 'Tanto Amor'. It is written in treble clef with a key signature of three sharps (F#, C#, G#) and a 4/4 time signature. The tempo is marked as quarter note = 80. The music is divided into three sections: Section A (measures 7-20), Section B (measures 20-32), and Section C (measures 32-56). Each section contains six lines of music, each line representing a measure with a specific chord and its corresponding fretboard diagram. The chords used are F#m, D, E7, A, Bm7, and F#m7. Section A starts with a double bar line and a diamond symbol. Section B also starts with a double bar line and a diamond symbol. Section C ends with a double bar line and diamond symbols under the final notes.