

Agenda

- Treasury Report
- SC Scale Model Mega-Show Review
- PROJECT RIPCORD Update
- New Business?
- Scratch Building 101: Working with Epoxy Putty
- Show & Tell

SAMSUNG

Treasury Report

- Bank Balance = \$5,500.00
- Cash on Hand = \$2,000.00 (by Treasury)
- Pending Deposits this month: \$100.00 (THIS SHOW BALANCE)
- Treasury with Deposits = \$5,600.00 + 0.00
- Expenses this month: \$100.00 (THIS SHOW BALANCE)
- Net Show Cash Balance (THIS SIDE)

SC Scale Model Mega-Show Finances (Combined AMPS – IPMS)

Expenses

- \$1000 Venue
- \$320 Security
- \$402.11 Tables
- \$205.51 Plaques

Total: \$1927.62

Income

- \$1830 Vendors
- \$1665 Combined Registration
- \$1032 Raffle
- \$845 Sponsorships

Total: \$5372.00

*After subtracting expenses from income and splitting it
between the two clubs, each club netted \$1722.19.*

SAMSUNG

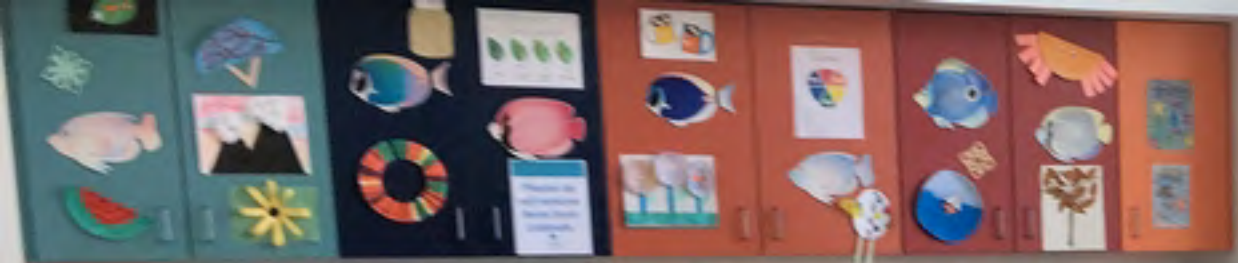
SC Scale Model Mega-Show Rollup

- Vendors: All 61 paid tables sold. Cancellations were filled by sold tables with refund checks (\$270) going out.
- Raffle: ALL prizes were given out this year. No left overs!
- IPMS Registration: 62 entrants and 320 models.
- AMPS Registration: 44 entrants and 118 models.
- We successfully used the new, modified AMPS awards ceremony format.
- Four food truck vendors // Vendor from Russia
- Observations, Comments, Questions on the show?

SAMSUNG

SC Scale Model Mega-Show: Next Year?

- Do we want to host a show next year?
- Do we want to invite the IPMS chapter again?
- What dates? (Same weekend would be F-S, 19-20 JUN.)
- Venue costs will go up (est. \$2-300).
- May consider renting more tables.
- May be possible to partially offset the increased expenses by raising the price of the vendor tables and / or adding ~10 more tables.



SC Scale Model Mega-Show: Next Year?

- Do we want to host a show next year?
- Do we want to invite the other members again?
- What space? (Same room would be 1-6, 10-15, 18-20, 22-23)
- Rental costs will go up (10K - 12,000)
- May consider setting more tables
- May be possible to partially offset the increased expense by moving the price of the vendor tables and/or adding "10" more tables.





PROJECT RIPCORD

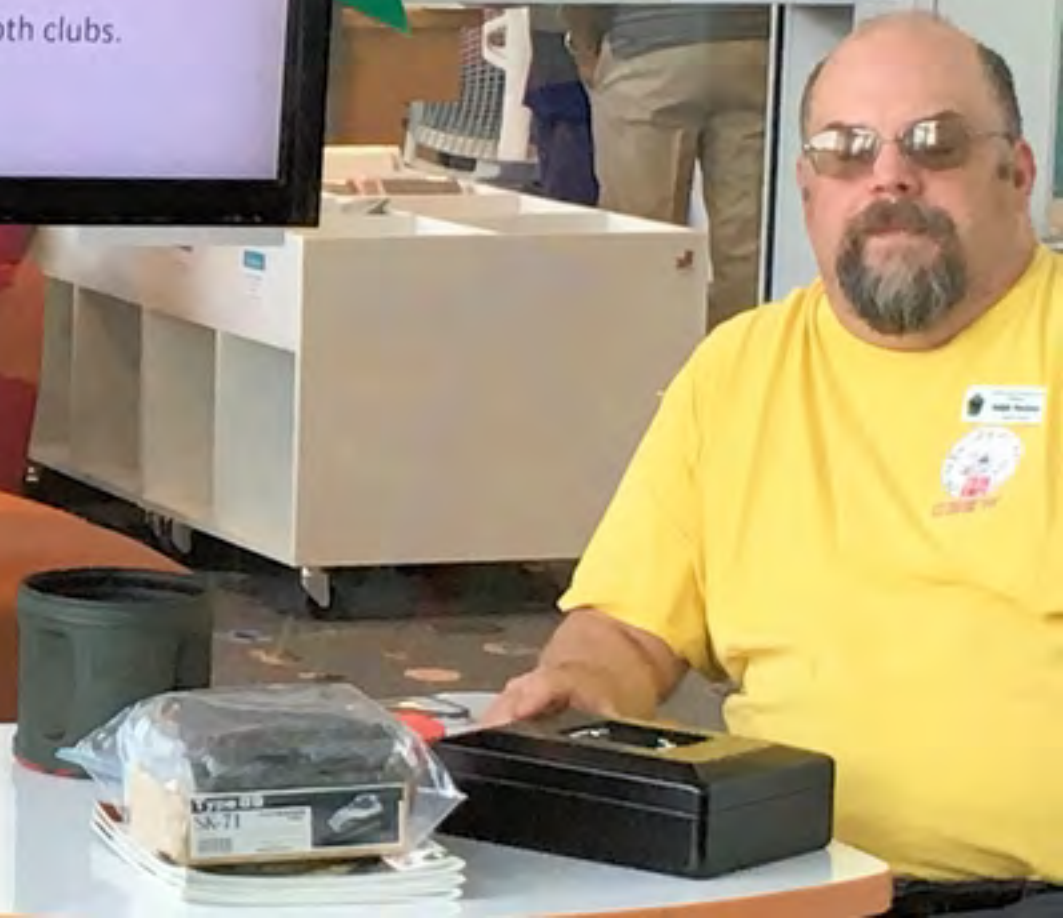
- We're starting to add PERMANENT features, so progress should pick up.
- Next build day will be Saturday, 27 JUL and will focus on adding permanent features on the hilltop (mostly 105mm battery positions).
- Deadline for completion is end of August.
- Deadline for delivery is mid-September.

SAMSUNG

2019 Toy Soldier Show Club Displays

- Saturday, 10 August
- Leads are Matthew and Timmy.
- Everyone should have gotten Timmy's Model Collection spreadsheet. Please fill out and return to him. This will be used (hopefully) to select particular models to build a display theme around.
- Kevin has volunteered to collect up the show supplies. It will take a number of folks to help set up.
- Matthew will oversee the set up at the museum for both clubs.

SAMSUNG



This month in Scratch-Building 101...

*Using two-part epoxy to create shapes and objects

SAMSUNG

Two-Part Epoxy Putty

- Milliput (Gray, White, and Tan have different textures / grain.)
Somewhat brittle. Fairly expensive. Traditional material.
- "Green Stuff" (Blue-Yellow Ribbon – Duro, Games Workshop, etc.)
Has a large degree of flexibility when set. Easy to find.
- Aves Epoxy (Various colors are all the same.)
Available in large quantities. Safety Solvent is excellent.
- Various other two-part putties, such as epoxy wood fillers and "epoxy steel."
Easy to find in home improvement stores and FLAPS. Experiment with working qualities.

SAMSUNG



various other two-pa
steel."

Easy to find in h
working qualities.



Two-Part Epoxy Putties

- Excellent fillers. Will not shrink and when set generally can be tooled like styrene (drilled, carved, sawed, filed, sanded, etc.).
- Good for "free form" and "organic" model structures, i.e. "sculpting:"

Scratch building and converting figures.

Sandbags and tents, tarps, and bags.

Trees and tree stumps.

Modeling compound curved / shaped objects (to include making forms for casting and vacu-forming).

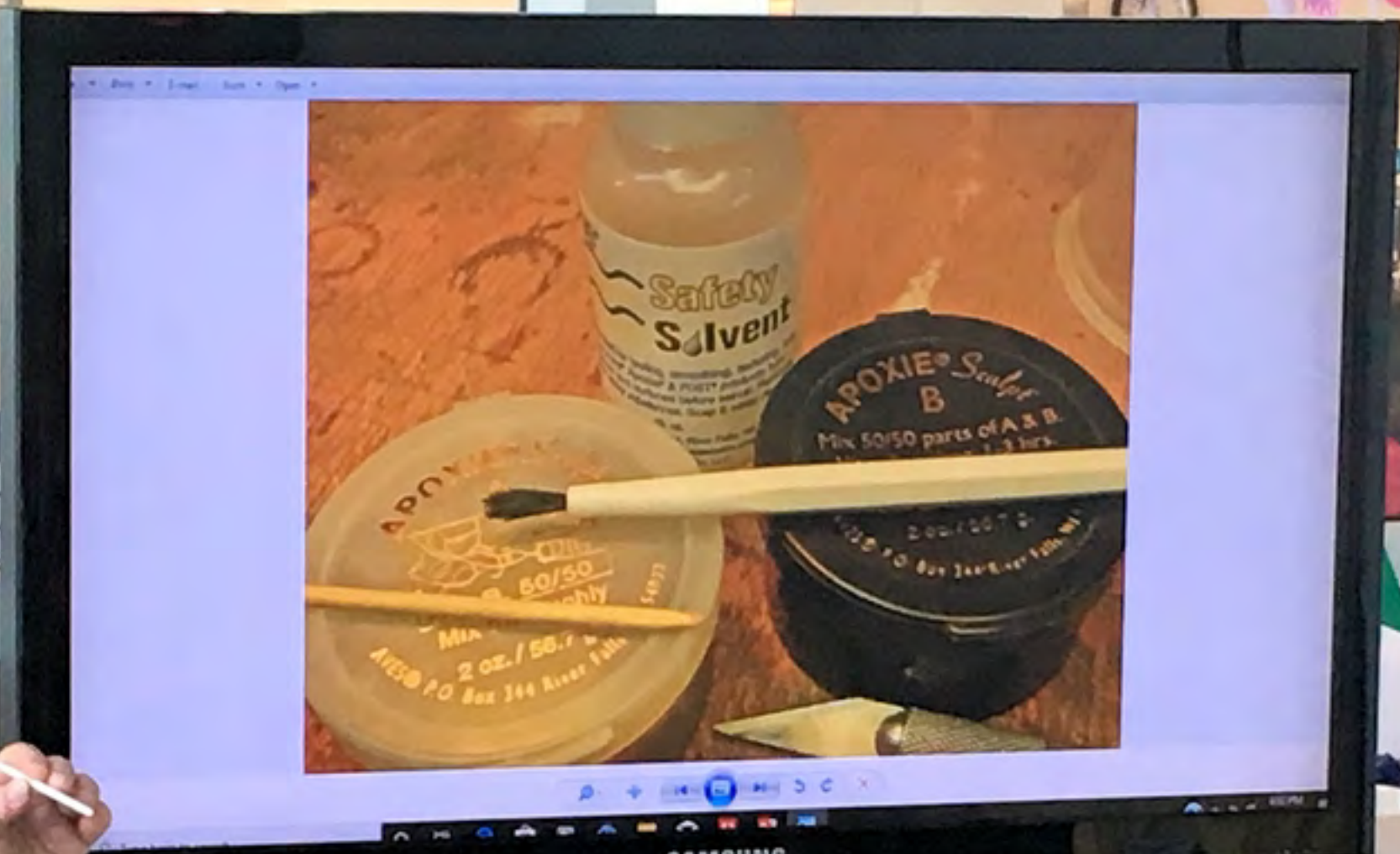
SAMSUNG

Two-Part Epoxy Putty Bed Rolls

[\\Model Ref. Snaps\Model Build Notes for Contests\M10 Tank Destroyer\Epoxy Putty Bedrolls\Edited Photos](#)

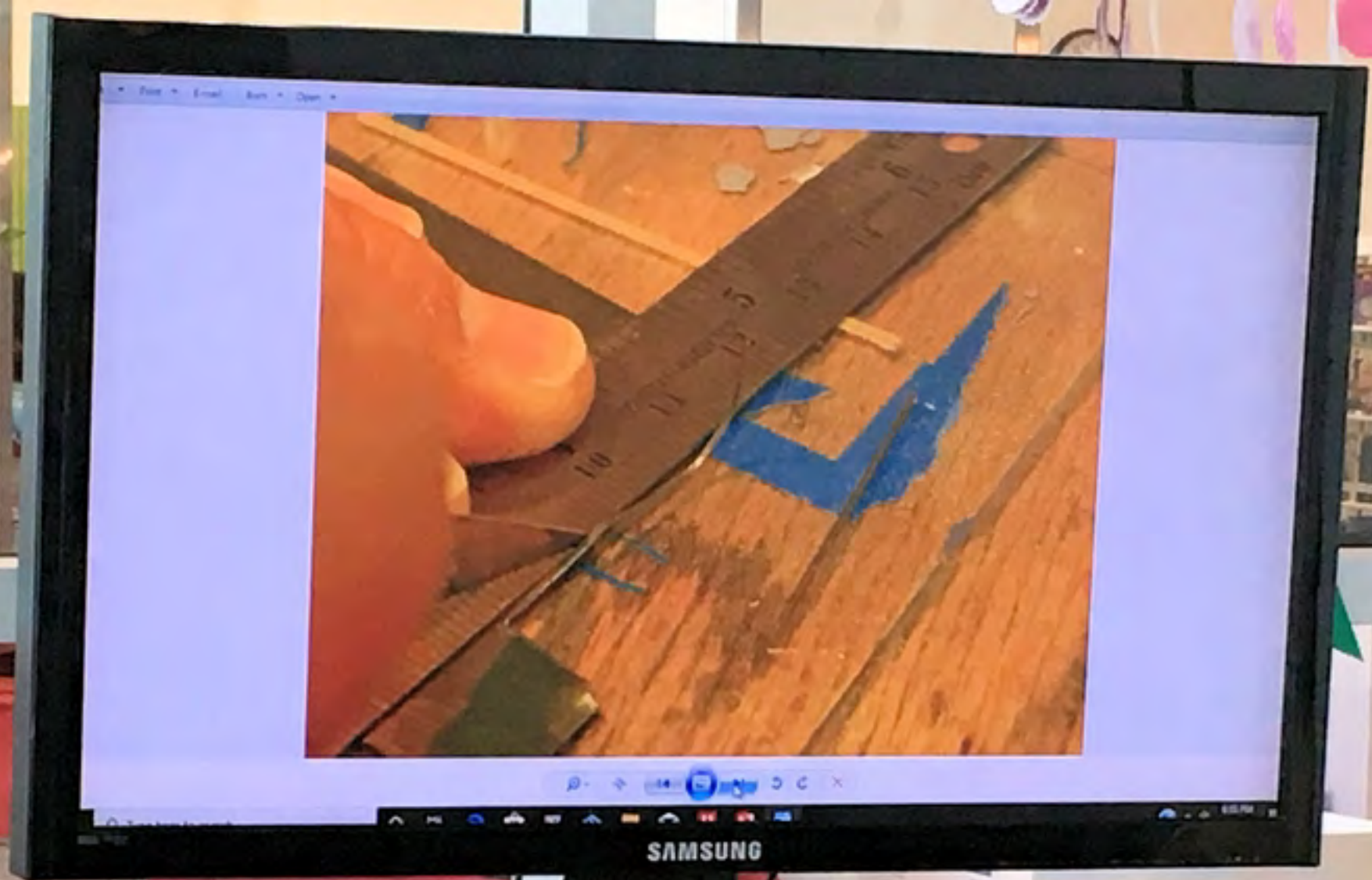


SAMSUNG

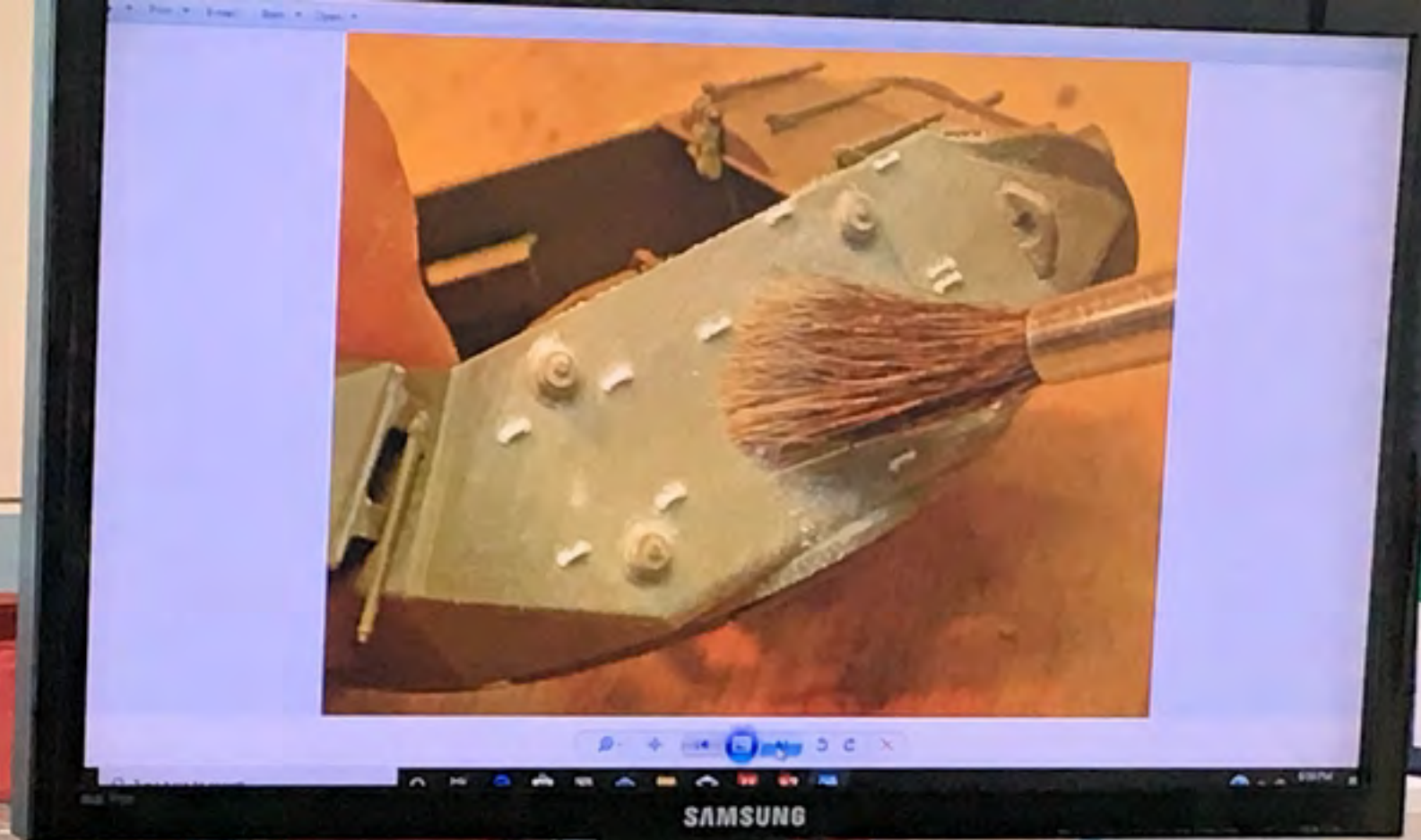


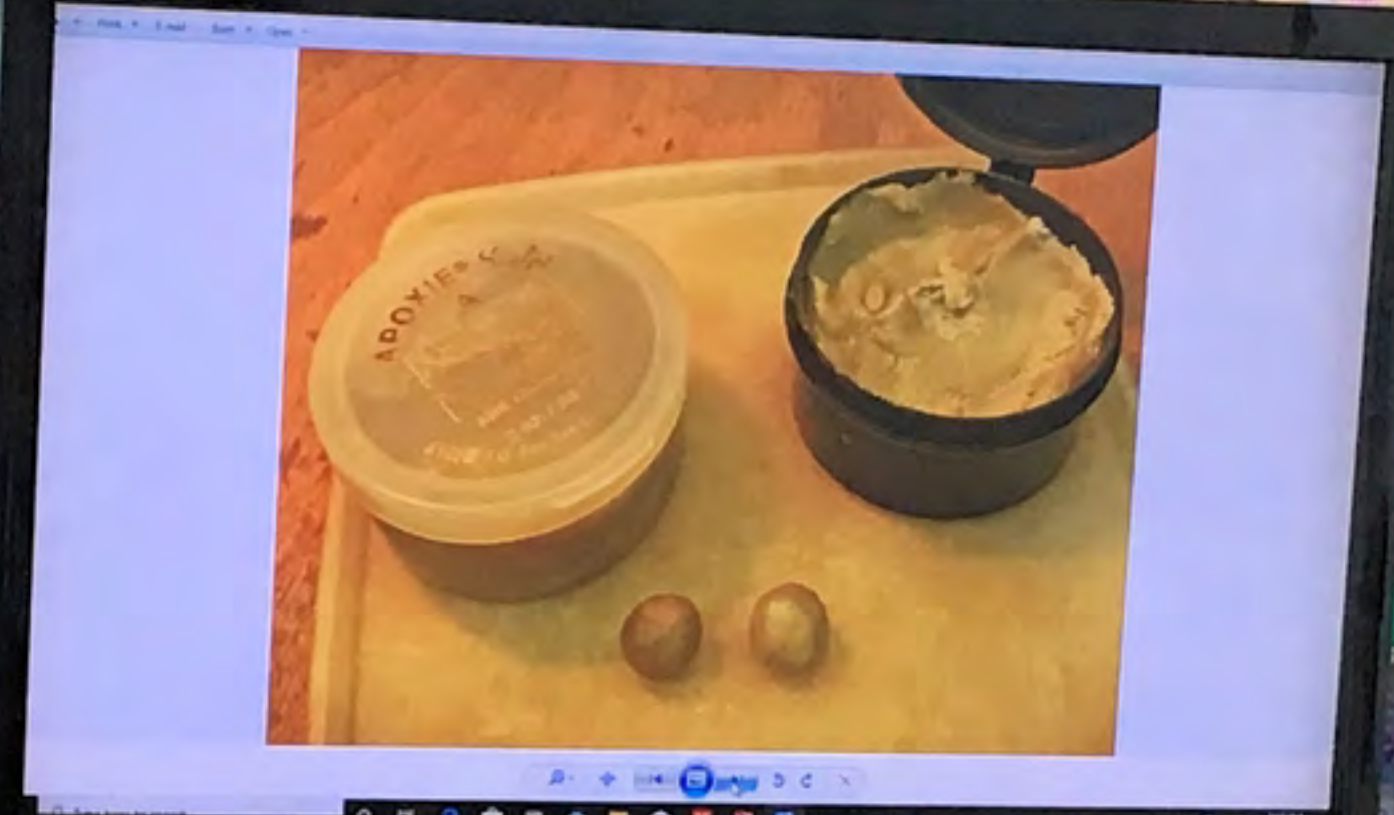


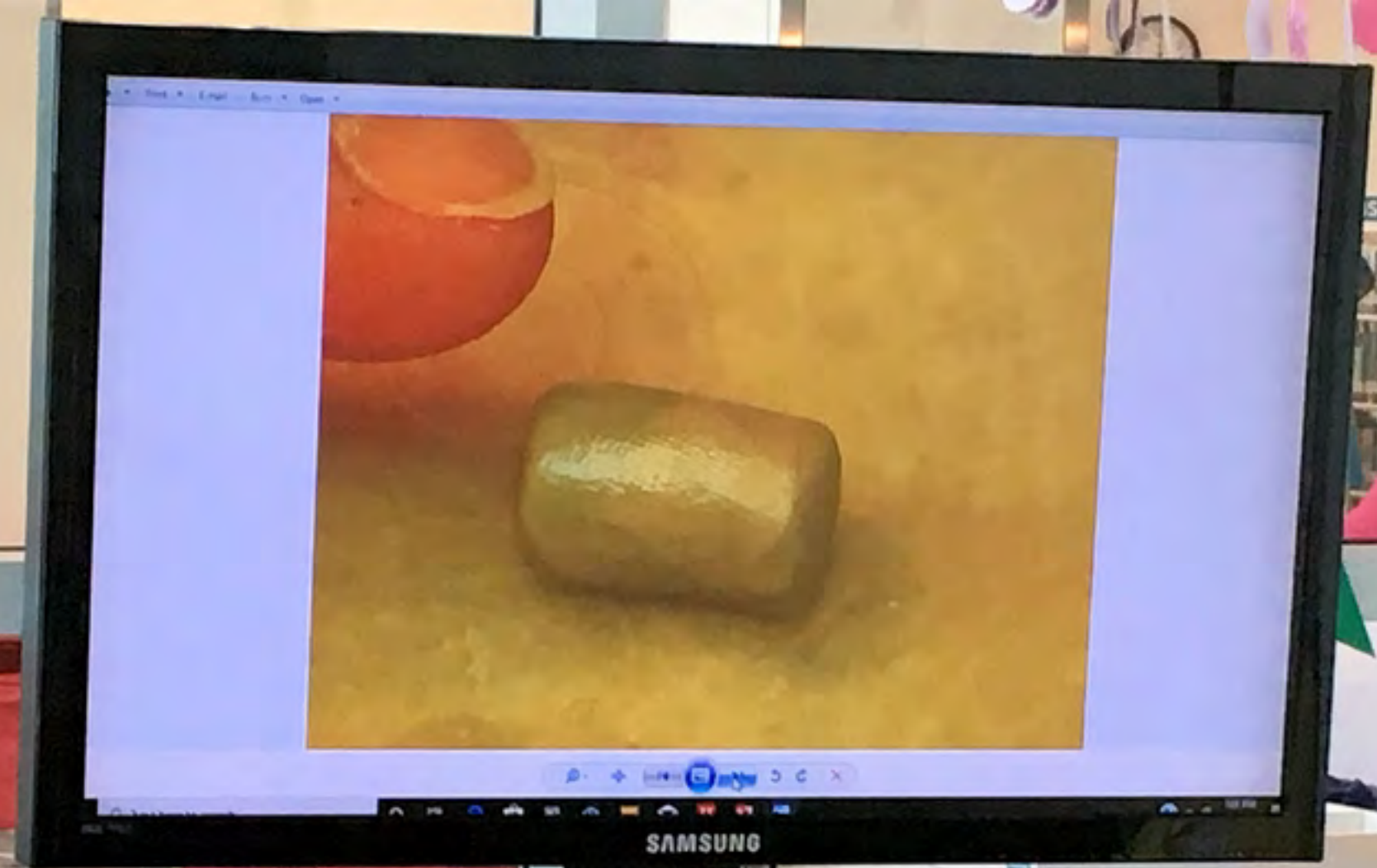


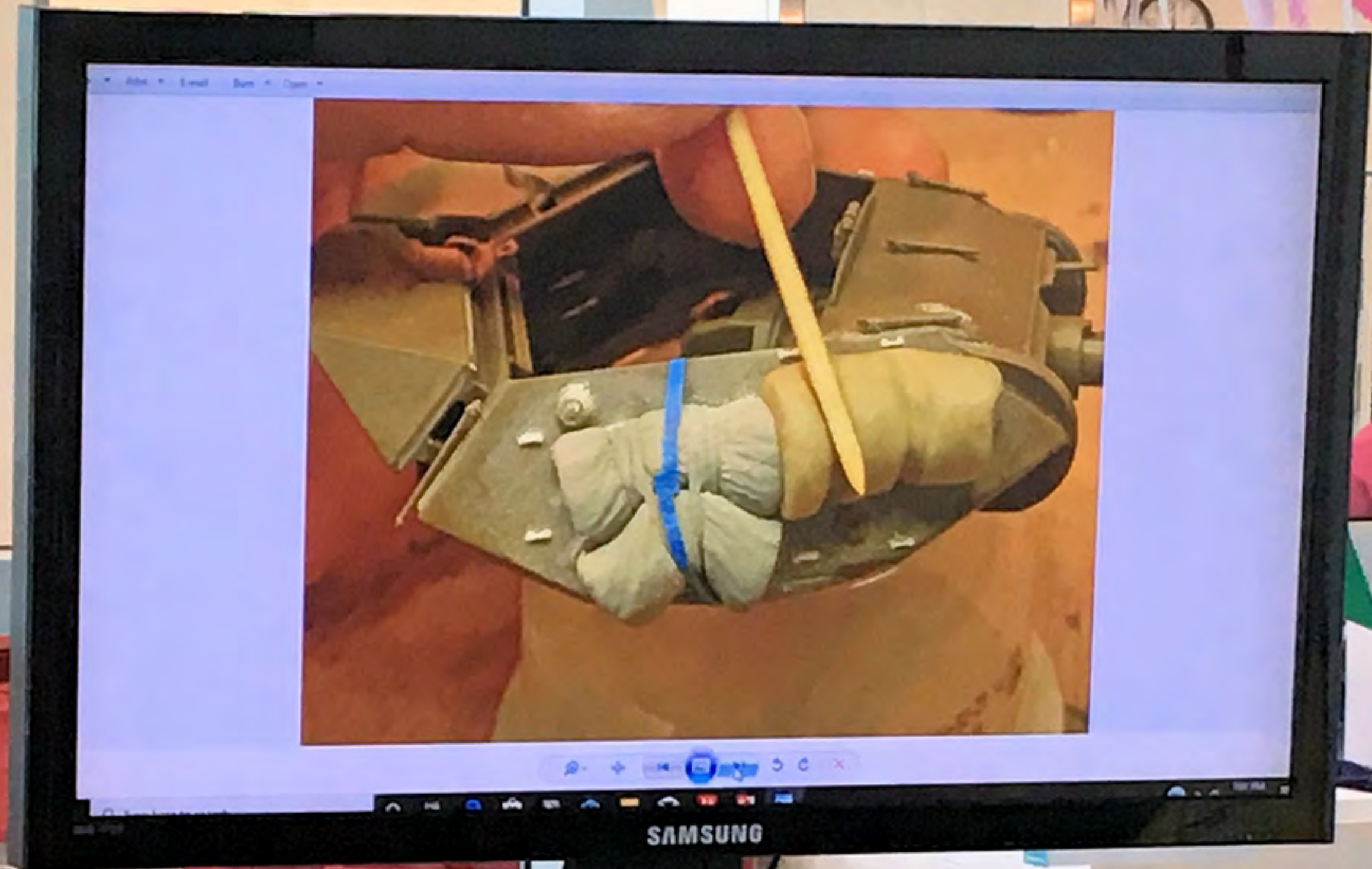












NISH

SAMSUNG







SAMSUNG

ANISH





SAMSUNG

Print E-mail Run Open



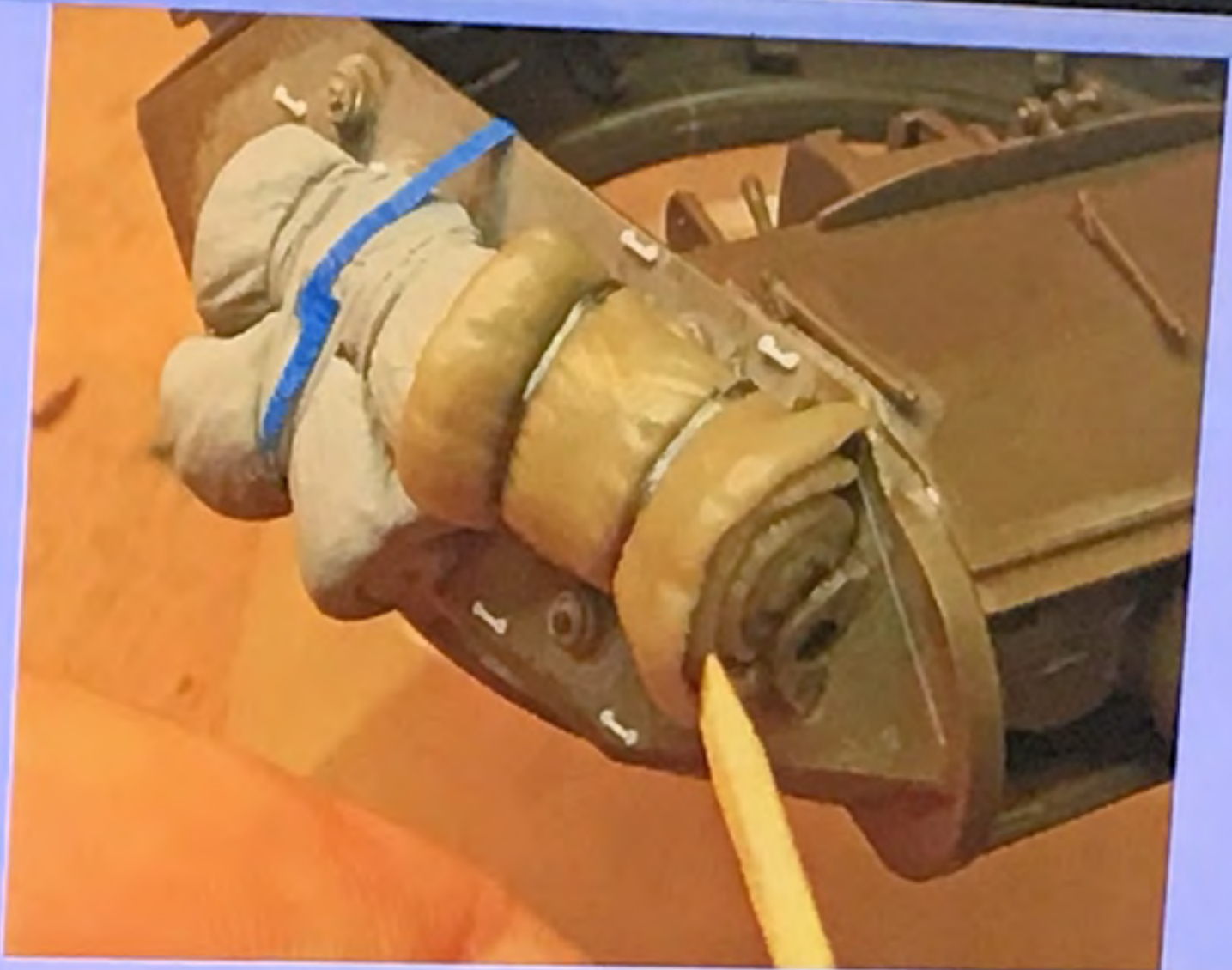
Navigation icons: back, forward, search, close, etc.

SAMSUNG

ISH



File Edit View Open



Navigation icons: back, forward, search, close

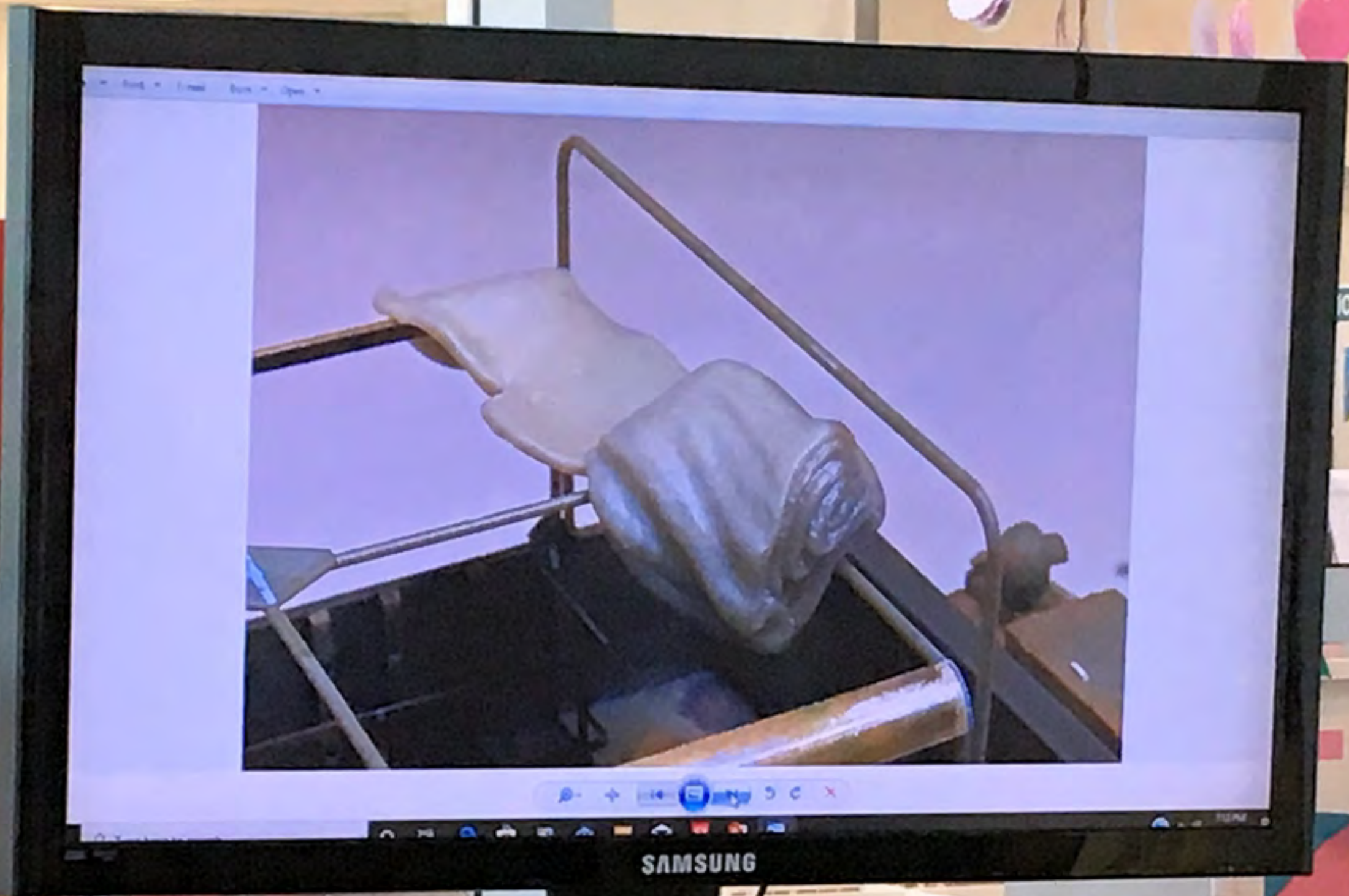
SAMSUNG





SAMSUNG





SAMSUNG



SAMSUNG



SAMSUNG

TION



SAMSUNG



CTION

SAMSUNG

Two-Part Epoxy Putty Other Projects



SAMSUNG



Two-Part Epoxy Putty Quick Demo

- Task: Sandbags on individual fighting position.
- Tools: All homemade / expedient measuring and sculpting tools.
- Mix equal parts.
- Generally roll out to create uniform base to work with.
- Mold the base onto the surface.
- Tool / sculpt the base to add the details.
- Smooth out tooling marks and finger prints with solvent and brush.
- Will harden in about two hours.

- Will harden in about two hours.

SAMSUNG









- Will harden in about two hours.

SAMSUNG



Always use a Quick Clamp
Use the Quick Clamp to secure the
laptop to the desk. It is a
simple and easy to use device
that will keep your laptop
secure and prevent it from
falling off the desk. It is
also a great way to keep
your laptop cool.

Always use a Quick Clamp
Use the Quick Clamp to secure the
laptop to the desk. It is a
simple and easy to use device
that will keep your laptop
secure and prevent it from
falling off the desk. It is
also a great way to keep
your laptop cool.







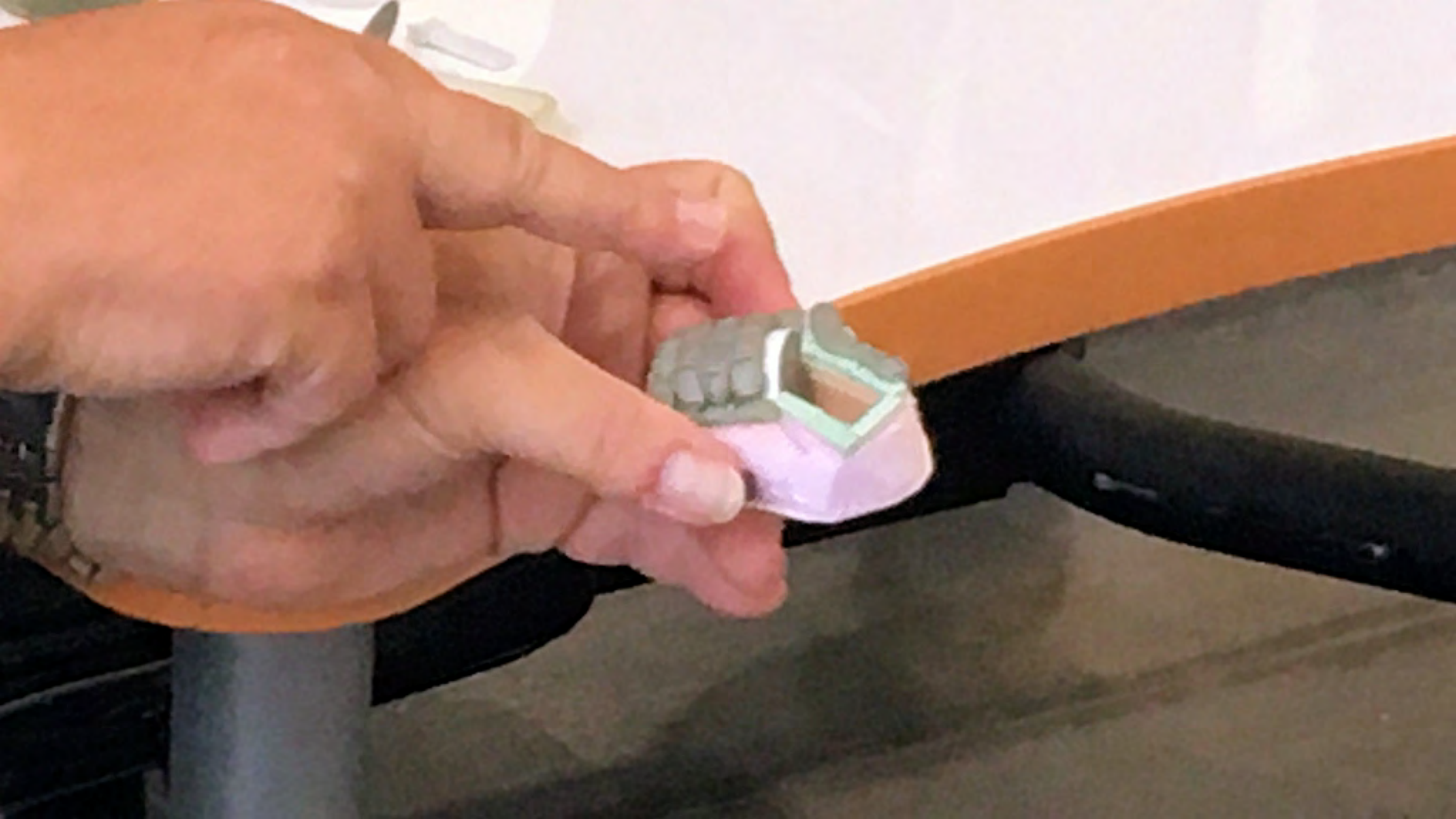
























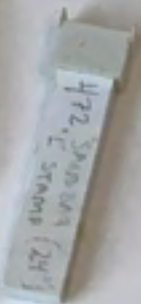
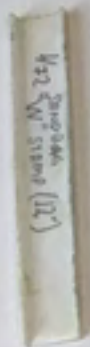




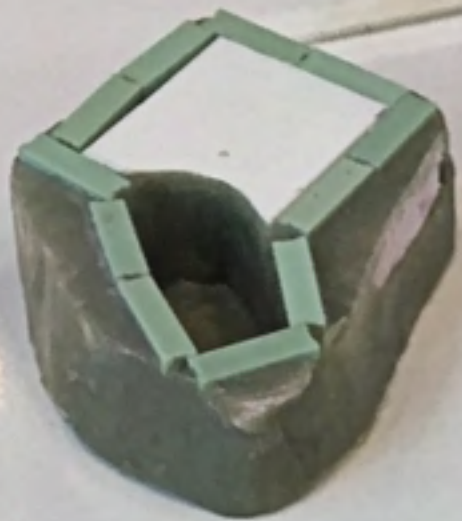


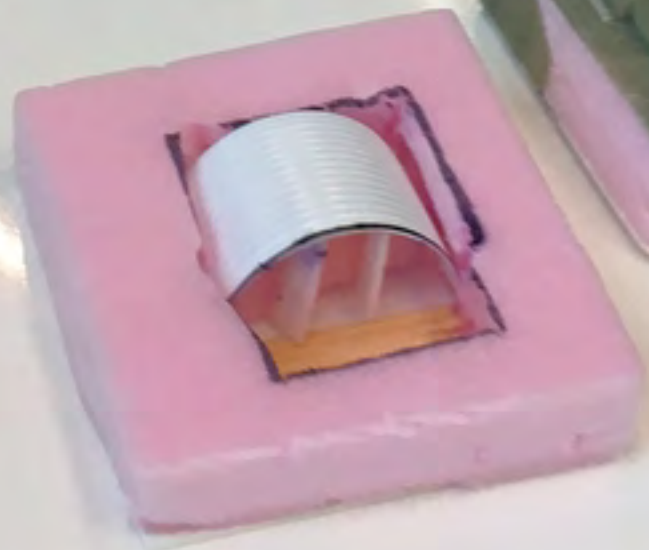
Two-Part Epoxy Putty Quick Demo

- Put together in 10-15 second curing cycle
- Best all-purpose / standard bonding and coating resin
- Mix equal parts
- Generally not as viscous unless used to seal with
- Push the base into the surface
- Not a surface glue to seal the joint
- Excellent bonding to most plastics with proper surface prep
- Will bond to most surfaces















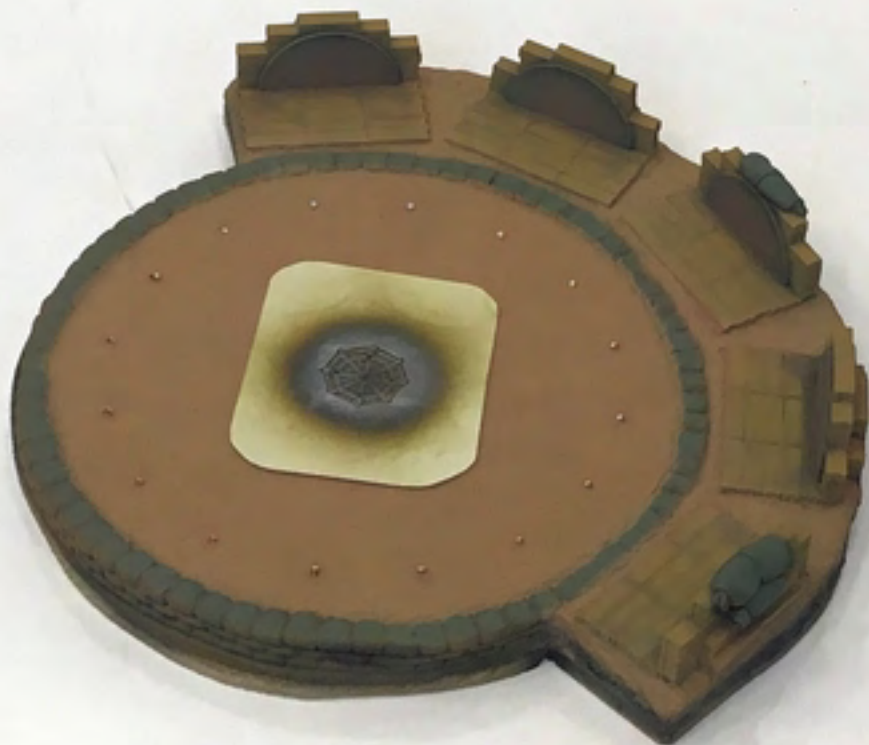


Show & Tell

HWI
T-55A







11JUL19 Meeting:

1. Whitman's Command Tiger I (DML + Fruit metal Tracks, Verlinden resin Interior, Aber metal Barrel), 1/35 – Trevor Edwards
2. CM-11 (M-48H) w/ ERA "Brave Tiger", R.O.C. Army MBT (Takom), 1/35 – Dave Varettoni
3. Vietnam War Fire Support Base M102 105mm Howitzer Firing Pit, and Ammo Bunkers (Toxso Model, built by various club members, painted by Bob Kerfonta, resin casting of 3D printed parts, scratch built), 1/72 – Mike Roof
4. Various Vietnam War Era Fire Support Base Fire Support Base Howitzer Firing Pits, and Ammo Bunkers (resin casting of 3D printed parts, scratch built), 1/72 – Mike Roof
5. German Self-propelled Rocket Launcher Sd.Kfz.4/1 Panzerwerfer 42 (Tamiya re-box of Italeri), 1/35 – Michael Child

Raffle: A really nice prize package (provided by David Bridges if I remember correctly), Finemold's 1/35 scale "IJA Type 89 I-Go Medium Tank", Armour Modeling Magazine Kit + Model Kasten's 1/35 scale "Type 89" Individual Workable Track Links + Instructions in 3 Armour Modeling issues, won by Brian Moeller

