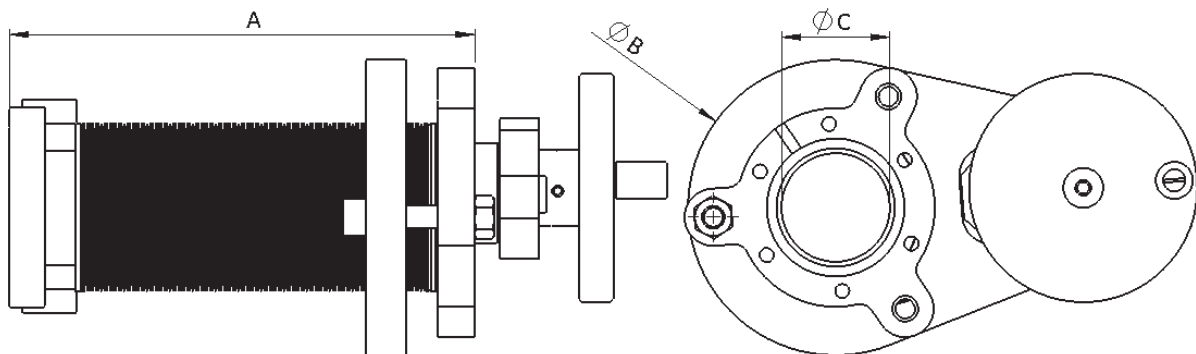


Linear Translator with Port Aligner

- Welded Bellows Seal with SS 316
- Manual/Motorized Actuator
- UHV Compatible Material
- Working Pressure: 10^{-11} mbar to 1 bar
- Etched Scale in 1mm Increments
- Bakeable to 200°C
- Tapped Flanges on Both Sides
- Standard NW40CF Mounting Flange*
- Adjustments:
 - Linear Motion: up to 150 mm
 - Tile Motion: ± 3 degrees



Dimensions of LPA38, details or 3D models on request

Flange (OD)		Axial Adjust ments (mm)	Tile Adjust ments (°)	A Extended	A Compressed	B	C	Weight (Kg)	Part Number
mm	inch			mm					
70	2.75	75	±3	163	88	104	38	2.7	LPA38-50
70	2.75	100		197	97	104	38	5.0	LPA38-100
70	2.75	150		257	107	104	38	7.3	LPA38-150

The device is based on the standard LSM series with the additional facility to tilt the moving flange by $\pm 3^\circ$ for final alignment, acting as an integrated port aligner. Typically used on beamlines to align diagnostics or for ion/sputter source alignment. Adjustment is actuated via four threaded support shafts. All flanges in the series are supplied with tapped bolt holes on the base flange as standard.