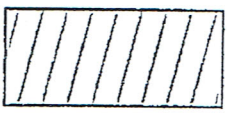


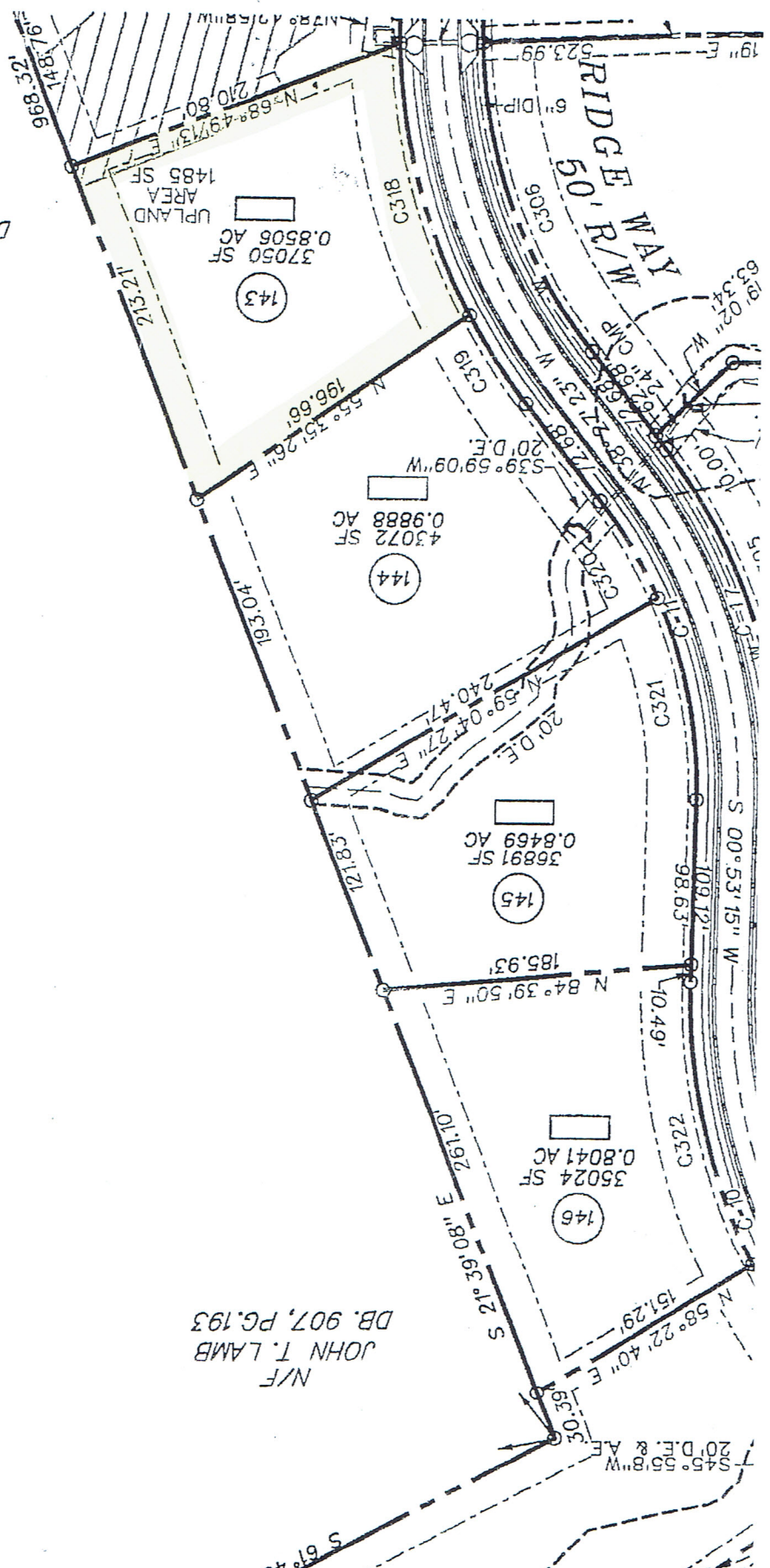
N/F
 JOHN T. LAMB
 DB. 907, PG. 193

HATCHING SHOWING UPLAND
 UNDISTURBED AREAS PROVIDED
 BY NELSON ENGINEERING,
 TERRAMARK LAND SURVEYING, INC.
 ASSUMES NO LIABILITY OR RESPONSIBILITY
 FOR THE IMPACTS OF THE AREAS DEPICTED.



RECORDING PERMIT
 John T. Lamb 11/15
 FALL COUNTY PLANNING COMMISSION

Hall County, Georgia, Clerk
 filed in office this 20th day of
 August 2005 at 3:40 PM
 Page 846
 Dwight S. Wood, Clerk



N/F
 JOHN T. LAMB
 DB. 907, PG. 193