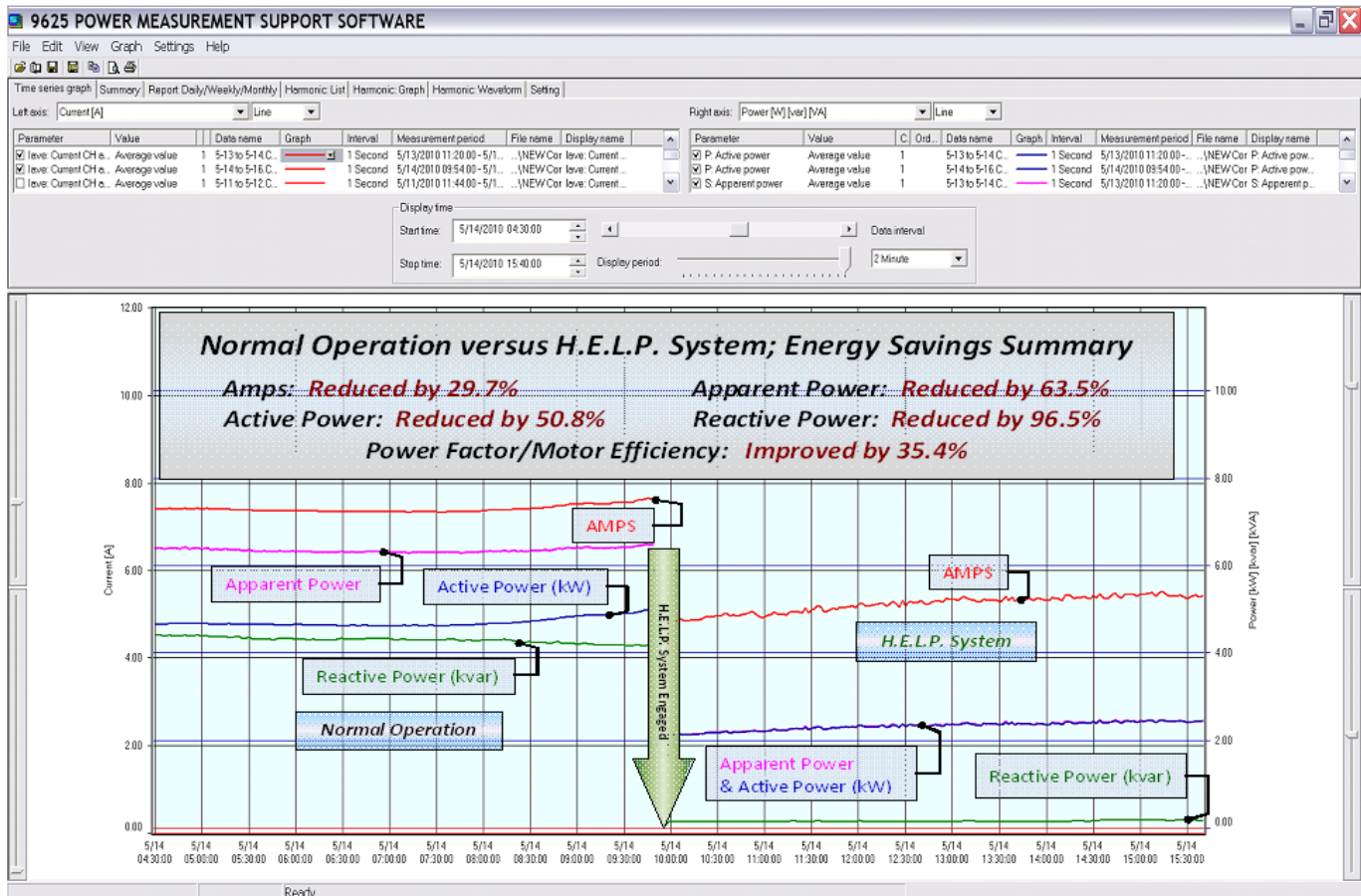




H.E.L.P. Energy Saving System in HVAC

*This **energy test** was conducted and recorded on a commercial HVAC unit. The chart represents a continuous ten-hour test segment of this third-party supervised evaluation.*



The Left-hand section of the chart shows the Normal HVAC Operation at 7.4 Amps. At approximately 10:00 AM, (Green Arrow) we stopped the equipment and let the compressor equalize, switched-on the H.E.L.P. System, and resumed testing.

The Right-hand section of the chart shows the H.E.L.P. System in operation. This clearly demonstrates the substantially reduced before/after energy consumption of 5.21 Amps = 29.7%!

The morning hours of operation (4:30-10:00 AM) were considerably cooler, yet The H.E.L.P. System significantly lowered energy consumption (30%) during afternoon heat while reducing and stabilizing the temperature variation!