

MINIMUM FINISHED FLOOR ELEVATION IS 36.4 FOR LOTS 18 AND 19 AS PER COMMUNITY PANEL NUMBER 050179 DORIC DATED NOVEMBER 3, 1993

L = 459.40  
T = 5794.54  
C = 299.77

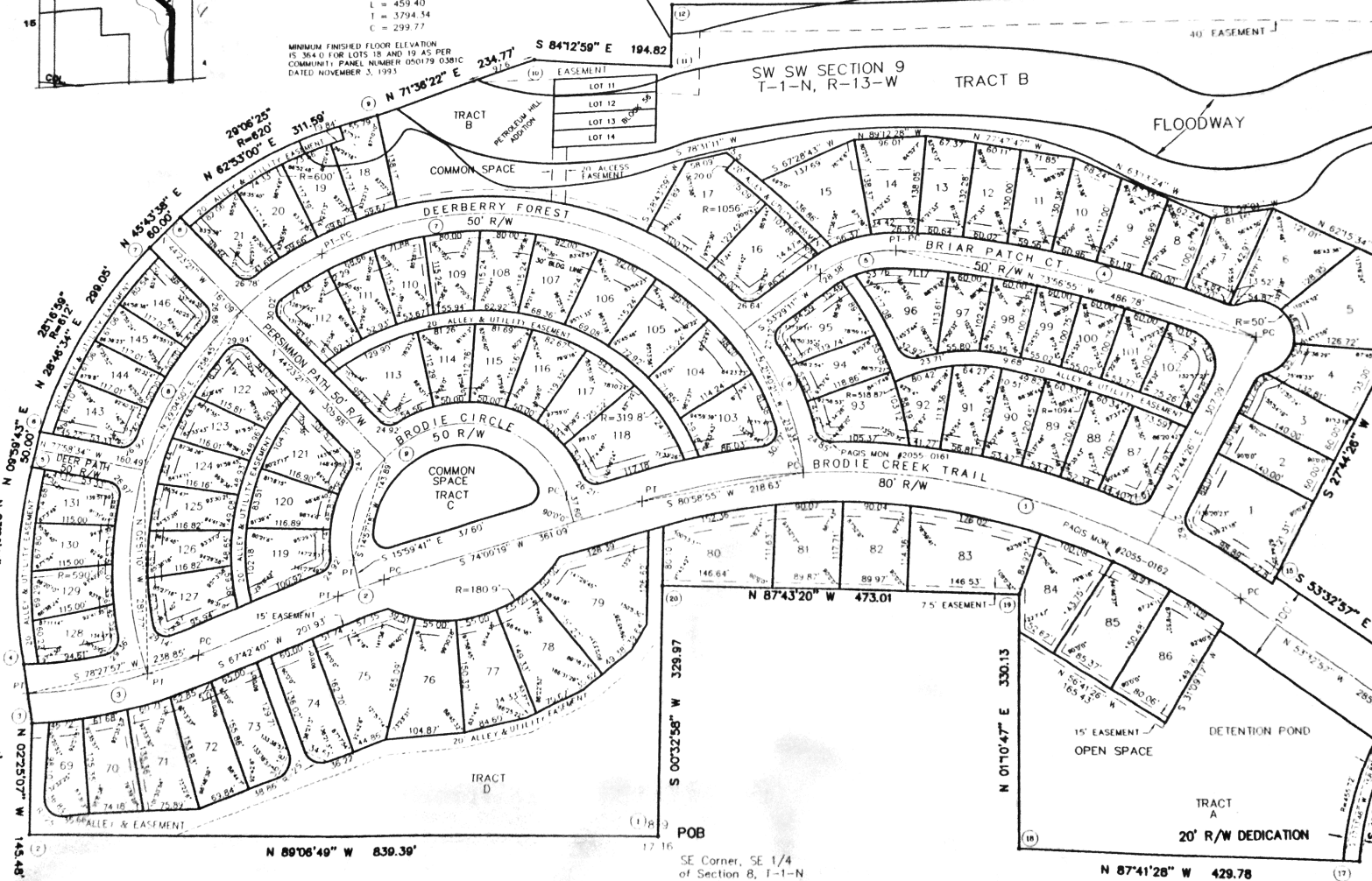
S 84°12'59" E 194.82

SW SW SECTION 9  
T-1-N, R-13-W

TRACT B

FLOODWAY

LOT 11
LOT 12
LOT 13
LOT 14



N 89°06'49" W 839.39'

POB

SE Corner, SE 1/4  
of Section 8, T-1-N  
R-13-W, Pulaski County Ark.

N 87°41'28" W 429.78

(17)