



### Understand and Be Prepared for Winter Storms

In Alberta, winter storms and extreme cold can happen suddenly, last for several days and have a significant impact on our daily lives. Winter storms can create power outages, reduce our ability to travel safely and create challenges for daily family living and livestock health and safety.

You can greatly lessen the impact of a severe storm by taking the time to prepare in advance. This involves three basic steps.



**1** Determine the type of severe weather, and associated risks, expected in your region. Be sure to listen to radio, TV and other communication channels. Realize the difference between the various winter weather warnings.

- **Winter Storm Watch** – Issued at least 12 to 36 hours in advance when circumstances are favourable for the development of hazardous conditions, but exact severity, timing and location can't be confirmed.
- **Winter Storm Warning** – Issued when a combination of hazardous winter conditions are occurring or expected to develop within 12 hours.
- **Blizzard Warning** – Issued when winds of 40km/h or more are expected to cause widespread reductions in visibility to less than 1 km due to blowing snow and expected to last for at least 4 to 6 hours accompanied by extremely low wind-chill.
- **Snowfall Warning** – Issued when hazardous amounts (which may vary across the county) are expected to fall over a 12 or 24-hour period.

**2** Make a family emergency plan, so that everyone knows what to do, what their responsibilities are and where to go in case of an emergency. Planning for a winter storm can also help prepare you for many other types of emergencies. For a downloadable, step-by-step publication from the Government of Canada visit: [www.getprepared.gc.ca/](http://www.getprepared.gc.ca/).

**3** Prepare an emergency kit (see website link below) so that you and your family can be self-sufficient for at least 72 hours during a severe storm. Key items would include but are not limited to:

- **Water** – at least two litres of water per person per day and include small bottles that can be carried easily in case you need to leave;
- **Food that won't spoil**, such as canned food, energy bars and dried foods (replace food and water once a year);
- **Equipment that is battery or manually operated**, such as flashlights, radio and can opener, ensuring you have additional working batteries; and
- **Ensure an emergency to-do list is available** and followed for both companion animals and livestock.

Visit [www.alberta.ca/build-an-emergency-kit.aspx](http://www.alberta.ca/build-an-emergency-kit.aspx) for more information.

For power outages, emergency power troubles and service requests, contact the distribution system operator for FENN REA: **ATCO Electric**  
Phone toll-free: 1-800-668-2248

**FENN REA**  
Box 31, Fenn, Alberta T0J 1K0  
Phone: c/o Philip Jarmin,  
1-403-740-9384  
Email: [fennrea@gmail.com](mailto:fennrea@gmail.com)  
[www.fennrea.com](http://www.fennrea.com)

**Battle River Power Coop**  
Member Care & Billing  
Box 1420, Camrose AB T4V 1X3  
Phone toll-free: 1-877-428-3972  
Email: [brpc@brpower.coop](mailto:brpc@brpower.coop)  
[www.brpower.coop](http://www.brpower.coop)



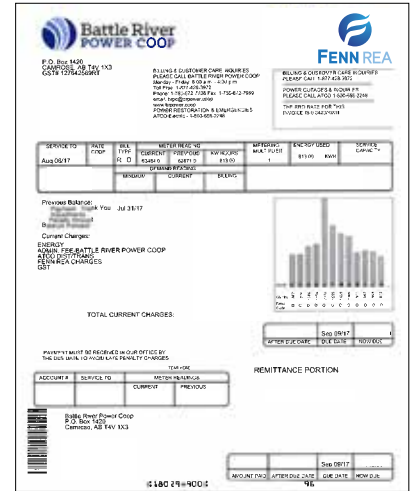
# Understanding Your Monthly Bill

Monthly electrical utility bills detail the applicable charges for the various components involved in electricity delivery. Below we are using a monthly bill example for the Regulated Rate Option (managed for FENN REA by Battle River Power Coop). Charge details would appear on all monthly invoices but might be listed differently.

In the top section, you will see your billing address, account number, the current and previous meter read, the kWh hours used for the current billing cycle, the electricity rate and the service address site ID.

In the middle section you will see the charges for the month and information on any previous balances or payments. (See below for greater detail.) You will also see a chart reflecting the last 12 month's monthly usage.

The bottom remittance portion provides details on amount due and the due date, in addition to your account information.



**ENERGY:** This line item reflects the cost of energy used within the billing cycle and varies based on consumption and the current cost of the energy. Billing cycle details are located in the top section of the bill.

**ADMIN FEE:** This is the fee charged by the electricity retailer/RRO provider (Battle River Power Coop) to cover the costs of billing and other customer service related functions.

**ATCO DIST/TRANS:** The distribution component (DIST) is the charge to operate your FENN REA distribution system and covers the ATCO annual contract fee to facilitate that operation. This includes new construction, vegetation management, pole testing and replacement, emergency responses and annual maintenance to keep the system functional.

The transmission component (TRANS) is based on consumption and reflects all supplemental transmission related charges such as the Quarterly Adjustment Riders, etc. in a single line. Transmission rates are established by the Transmission Facility Operators (TFOs). This amount is collected by ATCO and remitted to the TFOs – no amount accrues to the REA.

**FENN REA CHARGES:** This charge covers the operation of FENN REA, including Board of Directors' expenses, administration, Annual General Meeting, contract negotiations, accounting/audit, contractor management, inspections, and industry and stakeholder relations in addition to sustaining the Deposit Reserve.

The reverse side of the monthly bill (as per the example) has other information such as contact details, payment instructions and additional charges information, in addition to data on monthly charges.

## Regulated Rate Option (RRO)

The RRO rate may increase or decrease from month to month as it is priced on the open market and subject to many factors relating to supply and demand. If you do not have a contract with an electricity retailer, then you receive the default RRO rate.

For December 2020, the RRO is priced at \$0.06938 per kWh, which is reflected on your enclosed bill. For January 2021, the Battle River Power Coop monthly RRO billing rate for FENN REA members is \$0.07313. The RRO rate is also listed on [www.fennrea.com](http://www.fennrea.com).

Members are free to purchase electricity services from a retailer of their choice. For a list of retailers, visit [ucahelps.alberta.ca](http://ucahelps.alberta.ca) or call 310-4822 (toll free in Alberta).

Information on FENN REA's Code of Conduct Compliance Plan can be found on our website: [www.fennrea.com](http://www.fennrea.com)