

STANDARD FEATURES

Anodized exterior aluminum
Steel sewer hose carrying rear bumper
Overall insulation
Double butane tanks
Car-type radio antenna

Awning roll
Electric brakes (4-wheel electric brakes standard on tandem axle 30 ft. Imperial)

Directional signals
Front and rear cluster lights
Comb. 12-volt and 110-volt light (one)
Crank-type awning windows
Large multi-type "see thru" rear window

Choice of grey or tan decor
Vinyl tiled floor
Heavy duty wheels
Electric water heater
Full size aluminum swing-out screen door

Beautiful birch cabinets and wardrobes
Double-shelf locker cabinets over beds
Drop doors under rear beds of 30 ft. Imperial, 27 ft. Travelcader, 24 ft. Holiday

Roony wardrobes
Mica galley worktop

Avion Coach Corporation reserves the right to make changes at any time, without notice, in prices, color, materials, equipment, specifications and models, and also to discontinue models. Avion reserves the right to make improvements in new models without incorporating such changes in earlier models.

Send to Avion for a more detailed four-color brochure with floor plans.

*OPTIONAL FEATURES

6 cu. ft. gas-electric refrigerator 14 cu. ft. in 21 ft. Tourist, 18 ft. Sportman)
Gas light

Tandem axle with 4 wheel electric brakes available on 27 ft. Travelcader, 24 ft. Holiday

Upper rear banks, 1 or 2 available in 30 ft. Imperial, 27 ft. Travelcader, and 24 ft. Holiday (upper bank eliminates overhead cabinet, canvas bunk doesn't)

Air-conditioner

Extra wheel, spare tire and tire mount
Water purifier

Storm windows
30 and 40 lb. butane tanks w/ or without gages

Removable clothes rod in shower
Pressure water system
Gas water heater
Waste holding tank
TV antenna and swing-out TV shelf
12-volt lighting system (complete)

Double sink, swing faucet (single sink in 21 ft. Tourist, 18 ft. Sportman)
10 cu. ft. electric refrigerator in color (4 cu. ft. in 21 ft. Tourist, 18 ft. Sportman)

Deluxe built-in range and oven
Rear bathroom, Marine-type toilet, lavatory, shower with bathtub, medicine cabinet, clothes hamper

Power fan in well above range
Automatic switchover gas regulator
Automatic gas radiant heat — fan on 27 ft. and 30 ft. (auxiliary elec. heater in bathroom of 30 ft. Imperial)
Power fan in bathroom and front roof vent

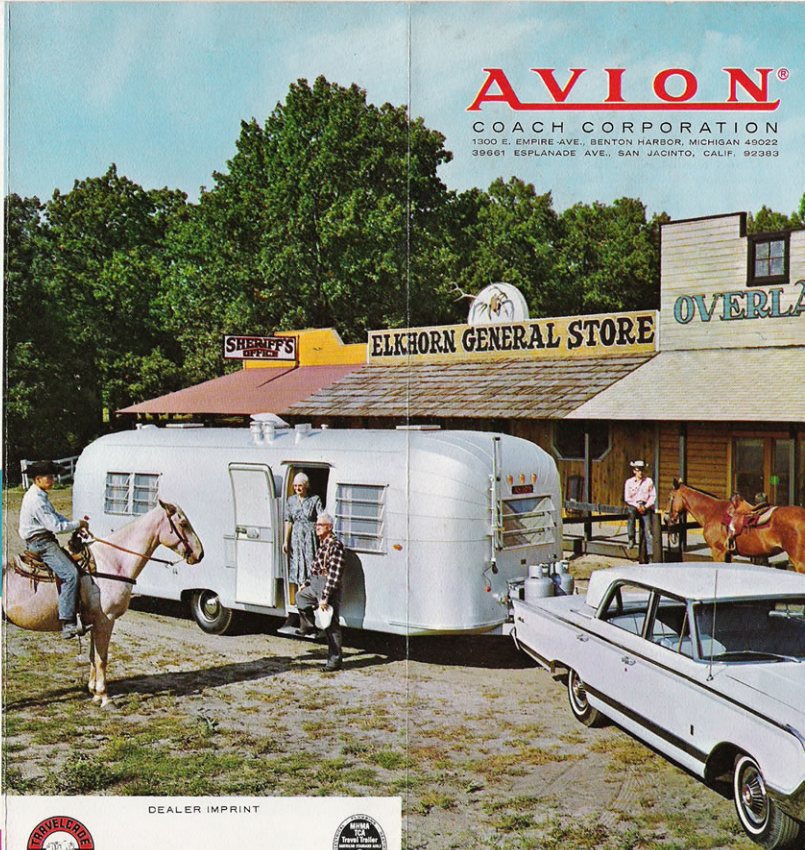
Sky dome vent
Entror trunk door
Folding door to separate front from bedroom area on 30 ft. Imperial, 27 ft. Travelcader, 24 ft. Holiday

Choice of deluxe custom built-in Poly-foam sofa/bed or custom dinette (Not on 21 ft. Tourist, 18 ft. Sportman)
Double bed has 48 in. x 74 in. mattress

Tein beds have 32 in. x 74 in. Mattresses
Cabinet above front window with clock

AVION®

COACH CORPORATION
1300 E. EMPIRE AVE., BENTON HARBOR, MICHIGAN 49022
39661 ESPLANADE AVE., SAN JACINTO, CALIF. 92383



Published by
Springfield
Benton Springs, Michigan

*Available factory or dealer installed at extra cost.

DEALER IMPRINT



AVION COACH CORPORATION

1300 E. Empire Ave. Benton Harbor, Michigan 49022
39661 Esplanade Ave. San Jacinto, California 92383