

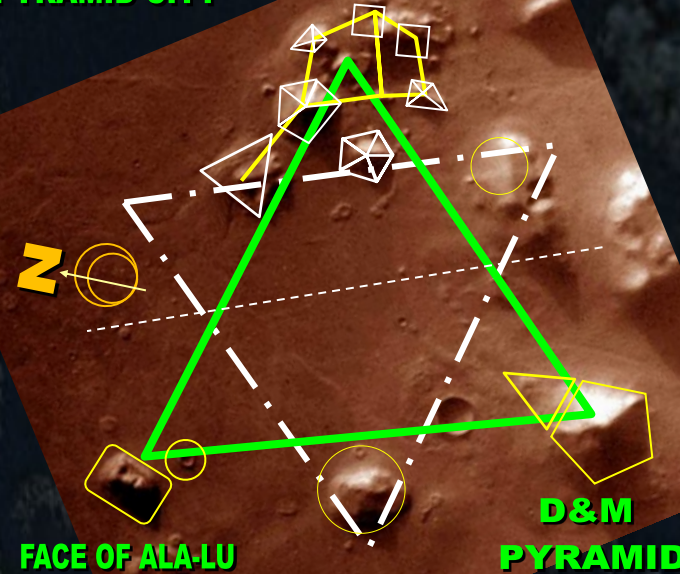
# MACHU PICCHU MARS TEMPLES

The purpose of this study is to ascertain the sacred ley-lines of the ancient lost city in the sky of *Machu Picchu* in Peru. This Incan citadel is situated in the Andes Mountains at a height of 2,430 meters or 7,970 feet. In the continued quest to use Astro-Archeology as a tool to discover such ley-lines, *Machu Picchu* will prove that such ancient sites and those around the world had a common and single source of knowledge and template that came from Mars. This template appears to keep recurring in such ancient sites, that of the pyramid anomalies of Cydonia, Mars. This special location incorporates the depiction of the *Pleiades City* along with a *Pentagon Fortress* and the famous *Face of Mars*. Although highly suggestive, *Machu Picchu* will be shown that such a geometry exists to corroborate these 3 elements within the city layout. Concerning the template of the *Martian Motif*, this study suggests that the chambers to the east side of the *Main Plaza* area were built to correspond to the 7 Stars of the *Pleiades*. This area is labeled on most tourist maps as the 'Factory' buildings. Nonetheless, there are 9 main chambers in this area, which was one of the main concentrations of living/working spaces. The *Sacred Square* upon which the *Intihuatana* is situated at also corroborates the association of royalty and that of a throne as the *Face of Mars* is said to have been build and dedicated as a mausoleum to the rebel 'King of Nibiru' that was exiled to *Mars* from Earth.

## CYDONIA, MARS

40°44'33.60N 09°27'40.29W  
@ ~13,00 ft elevation

### PYRAMID CITY



FACE OF ALA-LU

D&M  
PYRAMID

## LOST CITY OF THE INCAS

Urubamba Province, Peru  
Incan citadel in the Andes Mountains  
Height 2,430 meters / 7,970 ft

In the case of the design and layout of this Inca city, the *Temple of the Condor* corresponds to the *D&M Pyramid* in Cydonia, Mars. This site is also where the Prison was located. It would thus also corroborate the motif as a prison is a place that has to be more fortified and as in stronghold to hold prisoners and alludes to the pentagon of Mars as a fortress of sorts.

## INTIHUATANA

HITCHING POST  
OF THE SUN  
SACRED SQUARE



## SACRED PLAZA

3 WINDOWS TEMPLE

## MAIN CITY

'FACTORY DWELLINGS'

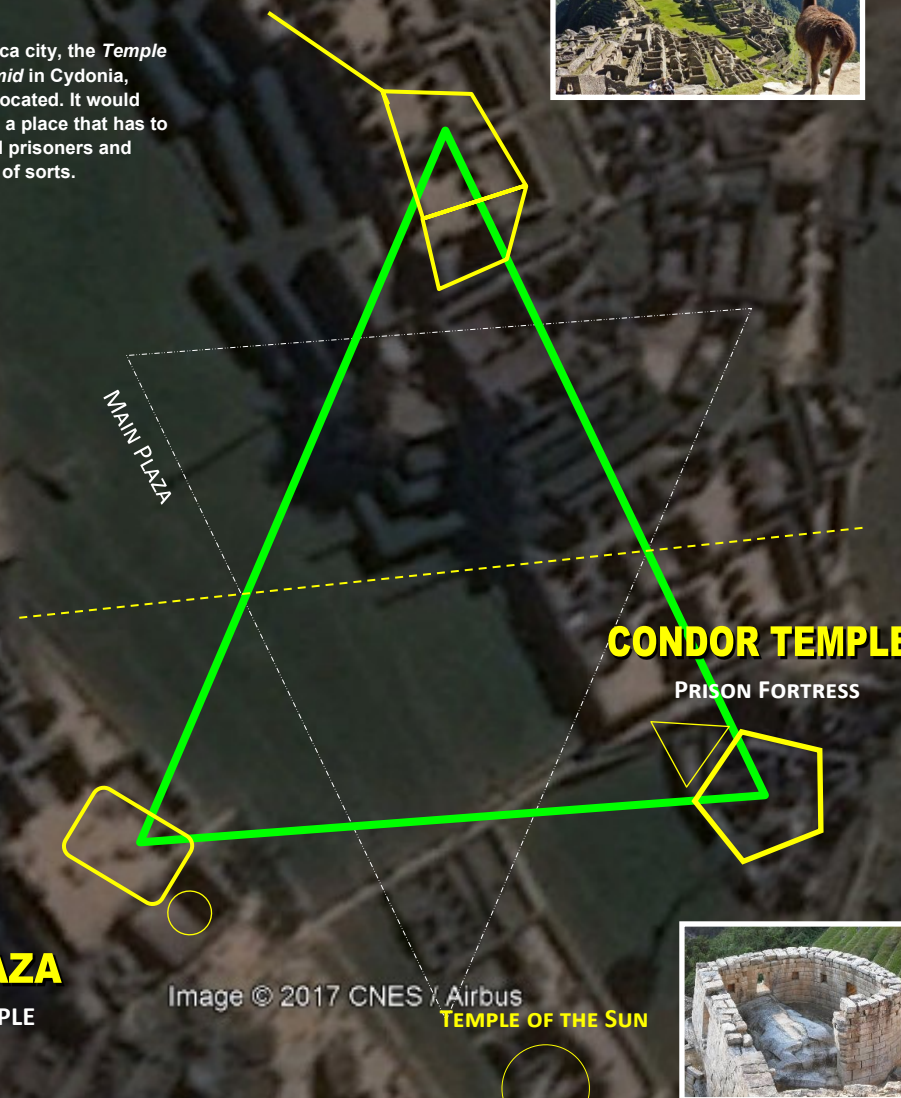
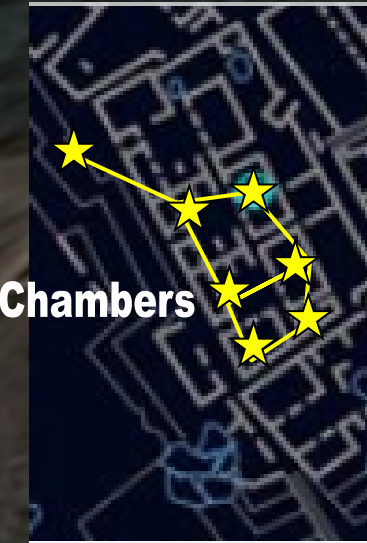


Image © 2017 CNES X Airbus

TEMPLE OF THE SUN

7 Chambers



The post is designed as a trapezoid that appears to match the orientation of the *Face of Mars*. Then the 'Factory' or commerce buildings correspond to the *Pleiades* constellation. In the case of the correspondence between the 'Factory' chambers and the *Pleiades*, there does appear to be approximate delineation of the boundaries that match the *Pleiades* constellation. There are a total of 9 main chambers on the site and based on the perspective, the *Pleiades* has the 7 main core Stars but 2 additional Stars of *Pleione* and *Atlas* come into play.

The *Hitching Post of the Sun* was a meeting place or portal from which there was an inter-exchange and perhaps still is for such beings. Thus, many world rulers believed that not only were they physically descended by a 'heavenly' extraterrestrial highbred bloodline, but also the Inca patterned their cities after this celestial origin and pattern handed down by the 'winged gods'. The Inca also believe that such being will return to such locations at the *End of Days*.

## THE PLEIADES

The 7 Daughters of Atlas



7 Stars



Google Earth

© Composition & Some Graphics by  
**LUIS B. VEGA**  
vegapost@hotmail.com  
www.PostScripts.org  
FOR ILLUSTRATION PURPOSES ONLY

Main Sources  
GoogleEarth.com  
Stellarium.com  
Wikipedia.com