

## REFERENCES

### **VIBRATION-FREE SOLDIER BEAM SHEETING SYSTEMS**

*To eliminate impact noise and vibration damage to adjacent structures,* soldier beams are installed by rotating a continuous flight hollow shaft auger into the ground for the full depth of the soldier beam. While the auger is advancing into the ground, the flights of the auger are filled with soil, providing lateral support and maintaining the stability of the hole. A self-hardening slurry is injected through the auger shaft as the auger is being withdrawn, maintaining continuous support of the hole. The soldier pile is lowered into the slurry-filled hole.

5/1/2010      **Winthrop University Hospital**  
 Linac Addition  
 \$121,490  
 Phoenix Medical Construction  
 516/693-0500

1/1/2010      **Bay Park STP Improvements**  
 Bay Park WPCP  
 \$326,825  
 Mace Contracting Corp.  
 914/576-0606

8/24/2009      **Roosevelt Library**  
 Roosevelt, N.Y.  
 \$143,000  
 Capobianco Inc.  
 631/207-0200

9/15/2008      **Brookhaven National Laboratory**  
 Building #515  
 \$195,000  
 Rockmore Contracting Corp.  
 631/366-6200

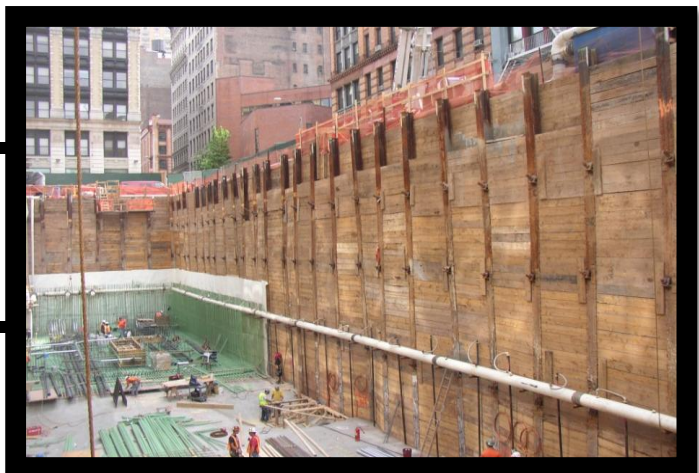
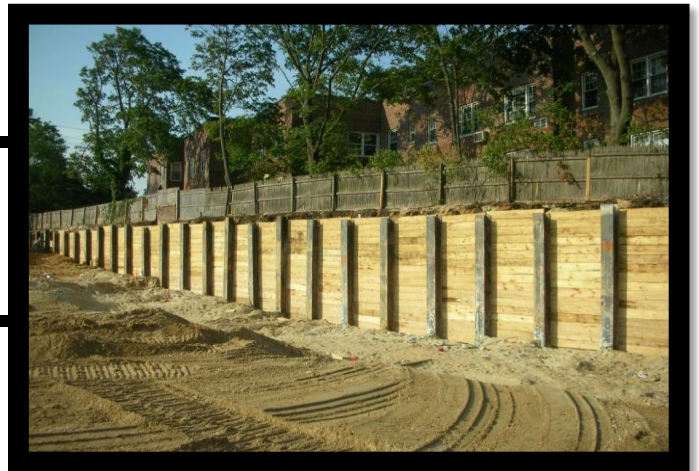
6/23/2008      **The Regency**  
 Lawrence, N.Y.  
 \$166,500  
 LJB Sewer & Drainage Corp.  
 631/589-0800

4/1/2007      **154-08 Northern Blvd.**  
 Flushing, N.Y.  
 \$575,500  
 154-08 Northern Blvd. LLC  
 718/353-2345

6/1/2008      **402 Avenue U**  
 Brooklyn, N.Y.  
 \$810,000  
 Kiska Group Ltd.  
 718/290-9111

10/1/2008      **NYU Cogen Vault Project**  
 3rd Street & Mercer Street, N.Y.C.  
 \$1,822,160  
 Peter Scalamandre & Sons  
 516/868-3000

10/1/2008      **Research Building Expansion**  
 North Shore University Hospital  
 \$465,000  
 Barr & Barr, Inc.  
 212/563-2330



## REFERENCES

### VIBRATION-FREE SOLDIER BEAM SHEETING SYSTEMS

*To eliminate impact noise and vibration damage to adjacent structures, soldier beams are installed by rotating a continuous flight hollow shaft auger into the ground for the full depth of the soldier beam. While the auger is advancing into the ground, the flights of the auger are filled with soil, providing lateral support and maintaining the stability of the hole. A self-hardening slurry is injected through the auger shaft as the auger is being withdrawn, maintaining continuous support of the hole. The soldier pile is lowered into the slurry-filled hole.*

11/1/2007      **NY Hospital**  
 Flushing, Queens  
 \$2,340,700  
 Bove Industries  
 631/331-8500

2/1/2005      **St. Francis Hospital Parking Garage**  
 Roslyn, N.Y.  
 \$2,230,000  
 Peter Scalamandre & Sons  
 516/868-3000

4/1/2004      **St. Nicholas Greek Church**  
 Bayside, Queens  
 \$538,900  
 Pav-Lak Contracting, Inc.  
 631/434-7300

6/1/2002      **MTA Euclid Ave. Station**  
 Brooklyn, N.Y.  
 \$110,263  
 Gibraltar Waterproofing  
 718/585-8800

4/1/2004      **MTA Essex Street Plant Rehab**  
 Essex & Christie St., NYC  
 \$188,000  
 A.F.C. Enterprises, Ltd.  
 718/275-1100

8/1/2002      **Elwood School District**  
 Northport, N.Y.  
 \$56,000  
 Ferran Development  
 631-249-4975

4/1/2001      **P.S. 222**  
 Jackson Heights, Queens  
 \$237,300  
 J.M.S.A. Engineering, P.C.  
 516/827-1134

10/1/2001      **Boy's Club of NY**  
 41st. Road, Flushing, N.Y.  
 \$260,000  
 MBI  
 212/376-4400

12/1/2000      **939 Union Street**  
 Brooklyn, N.Y.  
 \$307,400  
 Extreme Concrete Corp.  
 631/585-9000

