

# BOLDER

SALON MAGAZINE

## BALAYAGE

Why It's Trending  
And  
Who Should Wear It

## BALAYAGE OMBRE

Balayage And Balayage Ombre  
What's The Difference?

## SHADOW ROOT REVERSE BALAYAGE

Darker Color + More Contrast  
Add An Ombre  
To Lighten It Up :)

## FOILAYAGE

Want A Balayage With  
Maximum Blondeness?  
Try A Foilayage!



# WHAT'S INSIDE

---

## **FREEHAND COLOR** 4

- Popular Techniques For Seamless Color
- Technique Descriptions
- What To Expect

## **BALAYAGE** 6

Deep Dimension Blonding With A  
Thick Weave And A Faceframe  
On Long Hair

## **FOILAYAGE** 7

Bright Dimension Blonding With A  
Fine Weave Using Balayage Technique  
On A Foil

## **BALAYAGE OMBRE** 8

Bright Ends Plus Dimension  
Extra Contrast And Blending  
With A Shadow Root

## **SHADOW ROOT** 10

- Shadow Root Foilayage 10
- Shadow Root Balayage 11
- Shadow Root Ombre 12
- Shadow Root Sombre 13
- Shadow Root Blonde 14

## **SHADOW ROOT REVERSE BALAYAGE** 15

Darker Dimension Color For Contrast  
A Shadow Root  
And A Balayaged Lowlight



# FREEHAND COLOR

**Freehand Coloring**, like Balayage, represents a number of new color service trends that you see all over the internet. Celebrities and models are often the first to wear them. But what *are* all these new color services and what do they look like?

Freehand Coloring represents a number of highly-skilled techniques. These techniques feature what we call Color Blurring, Color Smudging, Color Combing, Water Color, and Color Melting for seamlessly blended color. The more blended the color, the more skilled the colorist.

The most known techniques of Freehand Coloring are the Ombre, Balayage, Balayage Ombre, Foilayage, Shadow Root, and ColorMelt.

Overall, these techniques can be used for either lifting color or for depositing color.

The many ways of using these techniques is what becomes much more fun! This includes Sombre, Reverse Ombre, Reverse Balayage, Shadow Root Balayage Colormelt, Shadow Root Reverse Balayage etc.

What does any of this mean? If you're lost, don't worry! Detailed explanations of each service will be listed and some will have featured pictures so that you can see the difference.

Understanding what your options are will better prepare you for what services to ask for. So let's get started!

---

## **Ombre**

A French originating word, pronounced 'Om-Brei,' means to have tones of color shading into each other.

An Ombre is a seamless and blended lightening of the ends of the hair. The lightened ends can appear natural, known as a **Sombre**, or they can be made to appear highly contrasted with the rest of the hair. A **Reverse Ombre** blends from a lighter color to a darker color on the ends.

Ideal hair length for an Ombre can range from an A-Line Bob, to Mid-Length, and Long Hair. More radical approaches might use an Ombre in blunt cut bangs.

The blending means that there will be some qualities of warmth into the hair. If the desired color on the blend and the ends is platinum, it will be nearly impossible. If the hair is platinum to start, then a Shadow Root can be blended down towards the ends.

Visually on the hair, the Ombre appears to have horizontal placement on the ends.

This implies that the hair is generally of mid or long length in order to fully achieve the graduation of Ombre shades for proper blending.

In reality there is no hard horizontal line because the color on the ends is slightly blurred vertically into the hair.

# FREEHAND COLOR

## **Balayage**

A French originating word, pronounced 'Bah-Lei-Ahge,' means to sweep. In terms of hair and haircolor, it means to sweep color over the hair.

A Balayage is a freehanded highlight that typically starts further down the hair for a soft and natural growout.

Ideal hair length for a Balayage can range from an A-Line Bob, to Mid- Length, and Long Hair.

A highly skilled Balayage is seamless and blended.

This means that there will be some qualities of warmth into the blend. If the desired color on the blend and the ends is platinum, then a Foilayage should be used.

Visually on the hair, the Balayage has a vertical placement and the sweeping motion implies the seamless nature of the look.

There are many different versions of Balayage that a client can choose.

---

**Deep Balayage-** Starts lower on the hair for a deeper transition of color.

**Bright Balayage-** Starts higher on the hair for a lighter overall color.

**Babylight Balayage-** Uses a fine and concentrated weave, depending on the sections used, can produce a lot of lightness or very minimal. Ideally used as a faceframe or in Foilayage.

**Dimensional Balayage-** Uses a thick weave in large sections for the most dimension.

**Natural Balayage-** Best for clients who are trying the technique for the first time and want a very natural look, uses a moderate weave in large or small sections.

**Balayage Ombre-** A combination of Balayage with an added Ombre.

**Foilayage-** A combination of the Balayage and Foil technique. The Foilayage is a blurred highlight within a foil/foam/paper for ultimate lightness.

**Reverse Balayage-** Uses a darker color to add freehand lowlights to the hair, usually used in conjunction with a Shadow Root.

**Shadow Root-** A darker root color that is extended downward up to 5 inches and ColorMelted into the ends of the hair.

**ColorMelt-** Uses up to three different toners as a means of blending from dark to light or light to dark colors seamlessly.

**WaterColor-** Uses water in certain techniques to seamlessly blend.



Balayage





Foilation





Balayage Ombre  
Shadow Root  
ColorMelt





Balayage Ombre  
Shadow Root  
ColorMelt





Shadow Root  
Foilage  
Low-Highlight  
ColorMelt

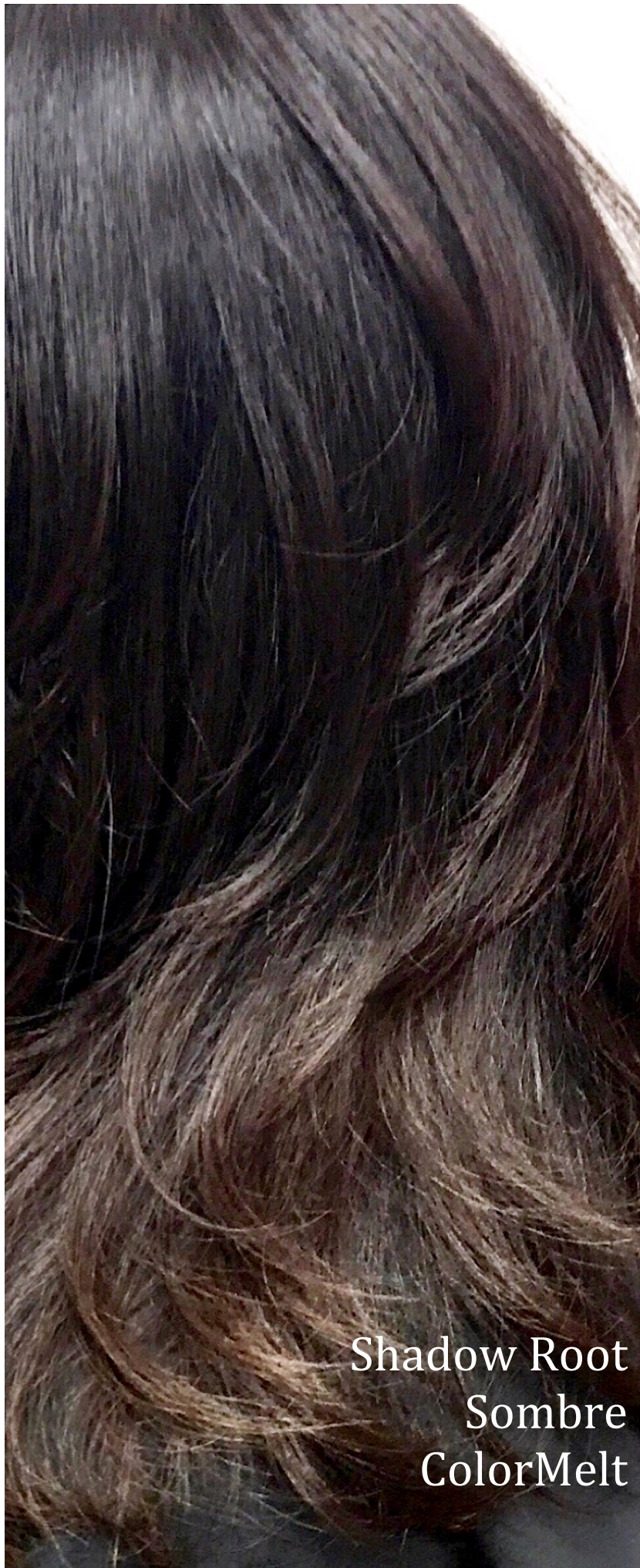






Shadow Root  
Ombre  
ColorMelt





Shadow Root  
Sombre  
ColorMelt





Blonde  
Shadow Root





