

AfiPass™

Passive Identification System

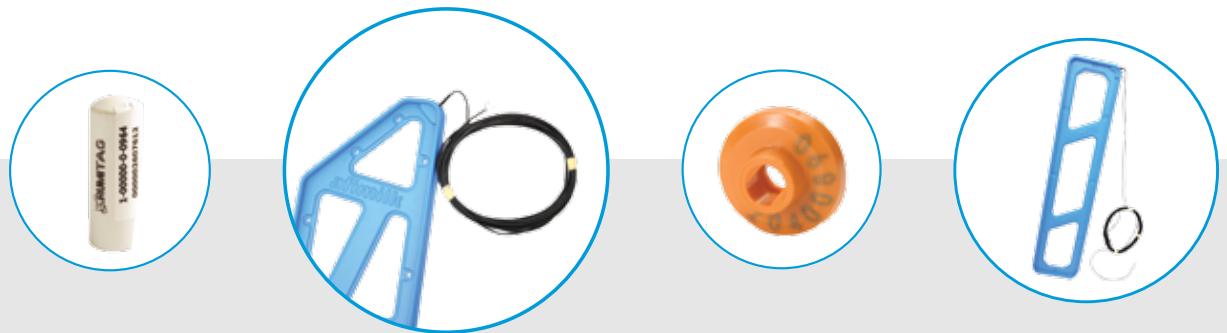


AfiPass

For ISO Identification

Accurate on-the-farm animal identification and data recording is a pre-condition for ensuring efficient herd management and for implementing systematic programs for genetic improvement of the herd. High levels of animal identification is the primary factor for the success of any automated data collection system.

The trends of assigning a standard electronic identification chip to farm animals, has been adapted in countries around the world today. Standard Identification chips are common and used for tracing of animals as well as food safety and data collection. AfiPass, ISO Identification tags (HDX) reader, is an important component of the AfiMilk system.



Main Configurations

AfiPass Identificaiton system in a farm is a flexible adaptable solution to most of the common configurations of milking parlors. It may be configured to support different types of milking parlors as well as different sequences of operation inside the milking parlor.

Rotary Parlors

AfiPass is used to identify both the animal and the stall in which the animal is milked. Its unique setting ensures that the animal is identified once inside the milking stall, unable to retreat. Thus, a high identification rate and accurate assignment of data to animal is achieved.

Shared Parallel Stall Identificaiton

This configuration allows usage of a milking machine for multiple animals on each load. It is built for a semi automated milking process, opening vacuum to the cluster automatically after the animal has been identified. The system monitors the start of milking of a new animal, assigning the correct portion of milk to each animal milked at the milking stall.

Entrance Identificaiton

AfiPass enables identification of animals as they enter the milking parlor. This configuration includes a milking machine and milk meter at each milking point.



Components

The AfiPass system is built of a main controller, different types of antennas and supports different types of standard ISO Identificaiton tags.

AfiPass Controller

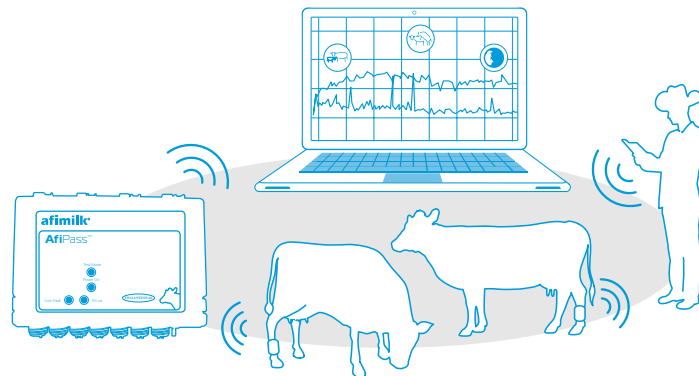
This device controls the identification process. It supports 2 antennas but may be configured to work with extension units to support up to 64 antennas per unit.

Antennas

A few types of antennas are available, according to the type of application.

ISO Tags

AfiPass supports three main types of ISO tags – Bolus tag, Ear tag and a tag strapped to the leg of the animal.



AfiPass is part of the AfiMilk management system.

Its excellent performance and flexibility ensures high rates of identification wherever it is used.



www.afimilk.com

Brown Dairy Equipment
2153 N Van Dyke, Bad Axe, United States
989-269-7081
lburk@browndairyequip.com

Brown Dairy Equipment Co.
 Serving Michigan's Dairy Producers Since 1962
 Locations in Bad Axe, McBain and Portland, MI
 We service all brands of equipment.
 Toll Free (800) 373-2153