

Tensioning Solutions Inc.

January 2017

The Company

Mission

- Offer to sign professionals a product line of aluminum extruded bars of the highest quality designed to fabricate custom frames to stretch banner material. Addressing many applications, and which is easy to install, versatile, easily changeable and very cost effective.

Applications

Billboards



17'H x 40'W Billboard
Realized with the TS23 extrusion

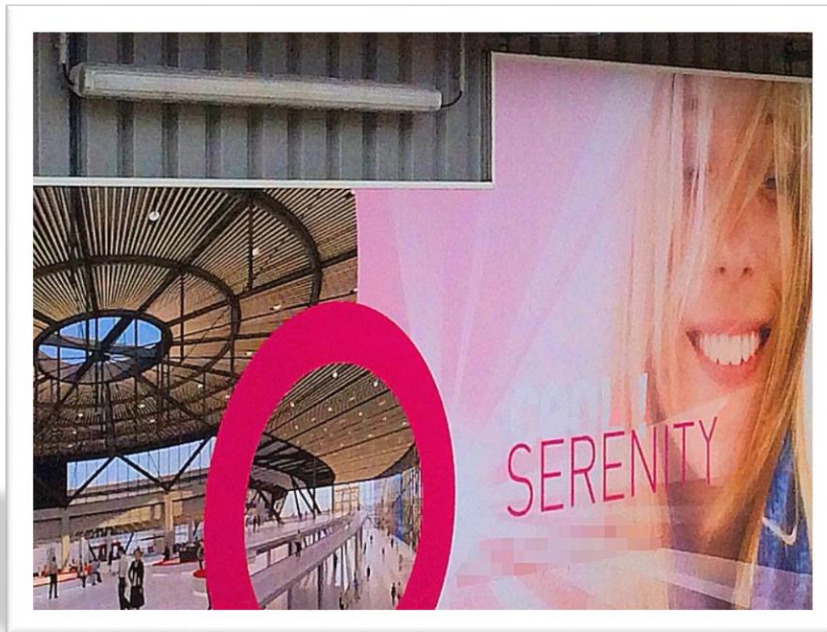
Stadium Signs



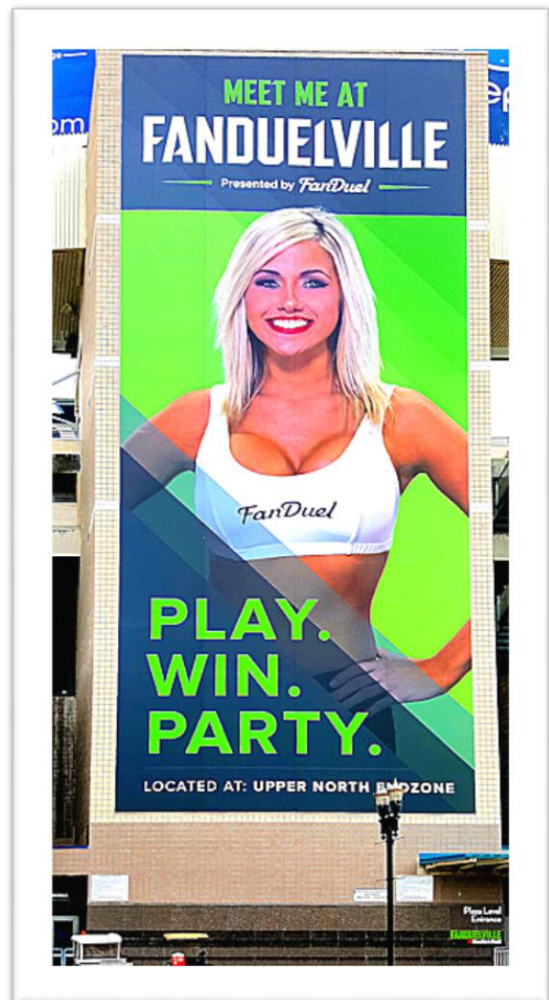
Cleveland Browns Stadium
Two of eight 22'x 42' TS32 frames with mesh banners

Applications

Non-Rectangular Signs



Very Large Signs



Both signs fabricated with the TS44 extrusion

95.75'H by 40'W
Jacksonville Jaguars Stadium

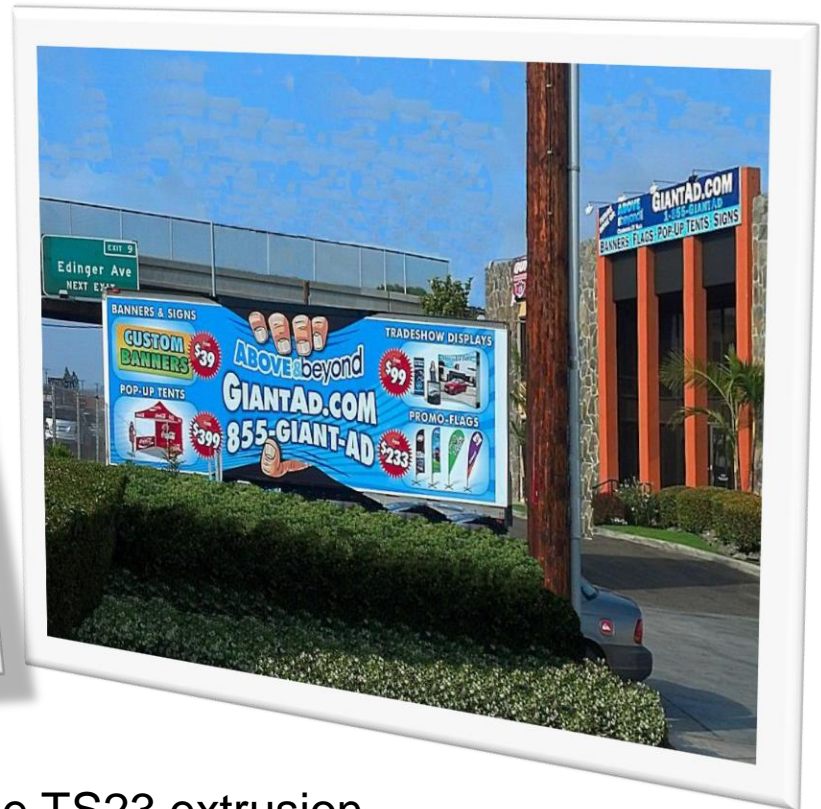


Applications

Trucks Graphics



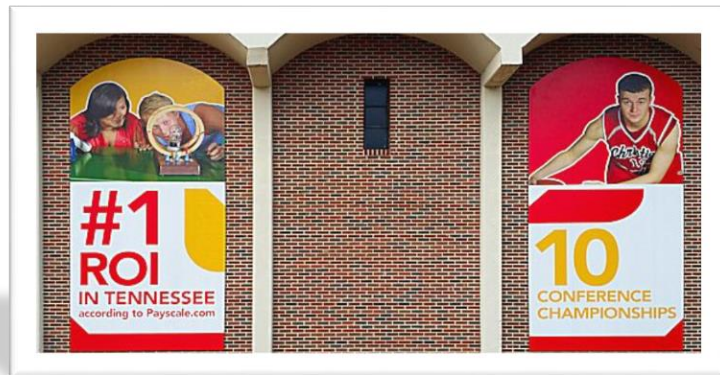
Trailers Graphics



Realized with the TS23 extrusion

Applications

Schools / Universities



TS32 - 8ft x 17ft Frames with Arch on Top

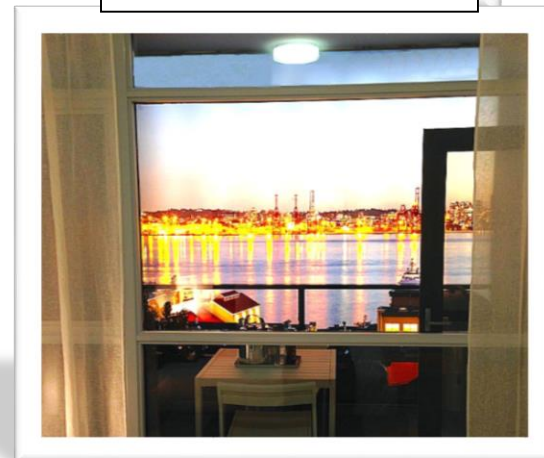


TS23-Mukwonago School - 3ft x 25ft Framed Graphic

Retail



TS23 for Flex Faces



Applications

Museums Exhibits



TS23 - 16'H by 67'W – Cleveland Museum
Dinosaurs Exhibit

Applications

Supermarkets



**3D-Structure with
Stretched Banner**



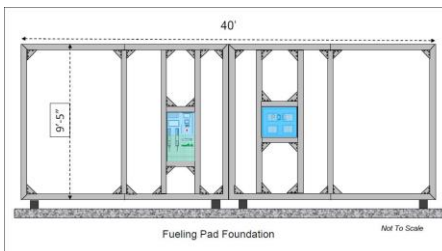
Both realized with the TS44 extrusion

Applications

Façade banners



TS44 – 9.4'H by 40'W Hydrogen Pump Station Façade

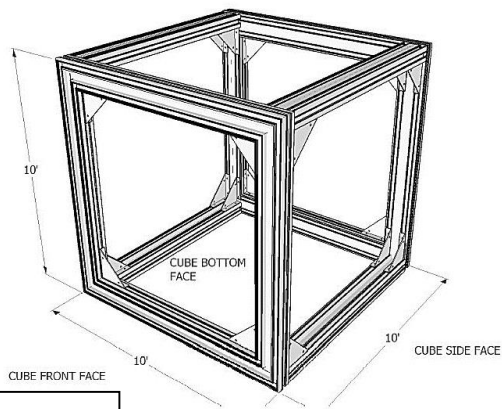


Exhibition Booths



Applications

More Structures...

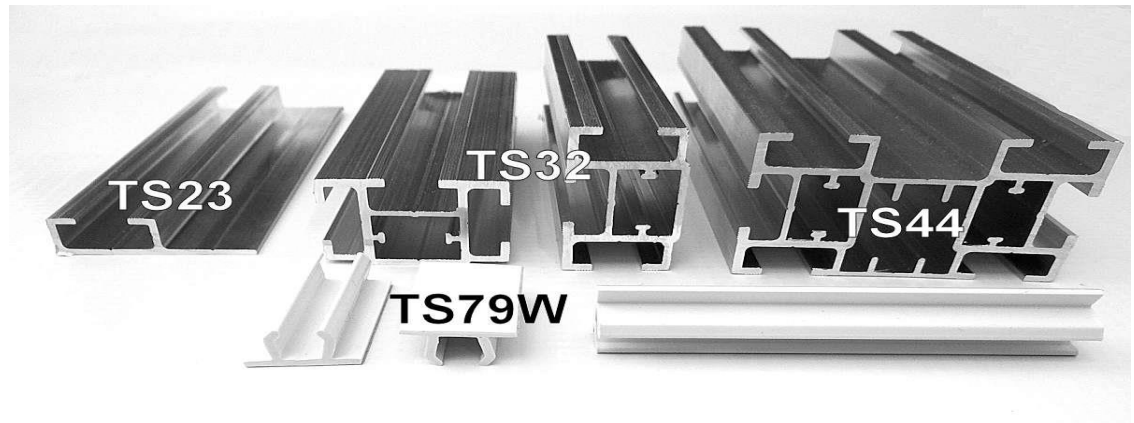


10' x 10' x 10'



Product Line

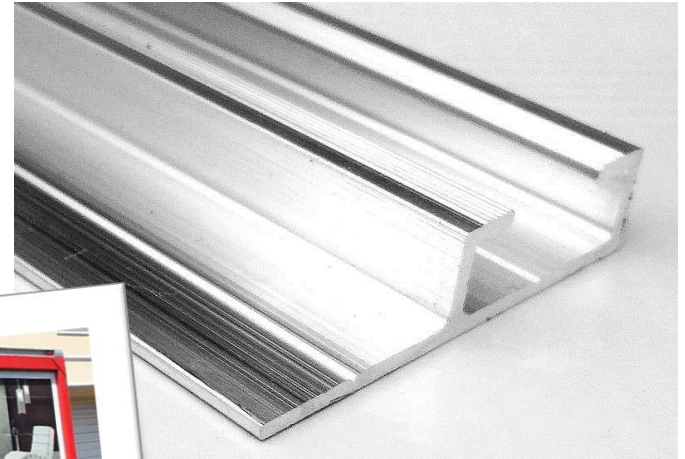
Our
Extrusions
are made in
USA



Products

TS23

- The TS23 our lightest extruded aluminum bar is suited for small, mid-size and large interior / exterior signs.
- Easy to install on a variety of supports (concrete, bricks and dry walls...),and ideal for trucks and trailers sides.

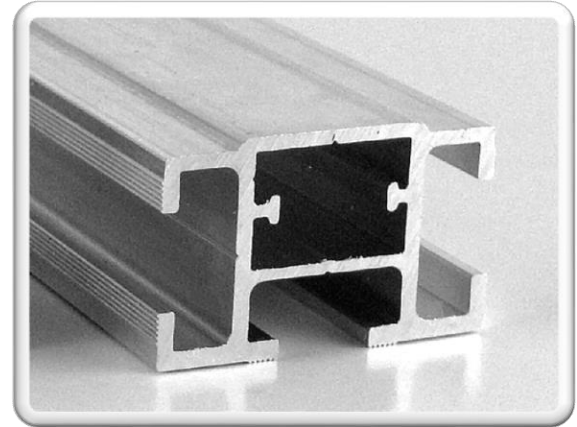


124' by 10'- Curved frame

Products

TS32

- This extruded aluminum bar is designed for small, mid and large sizes framed banners.
- It also can be used for building light structures.



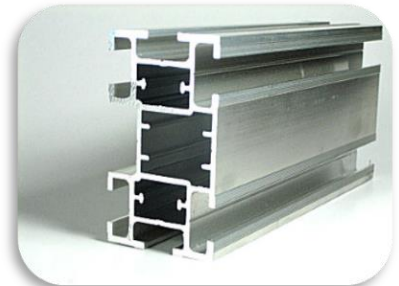
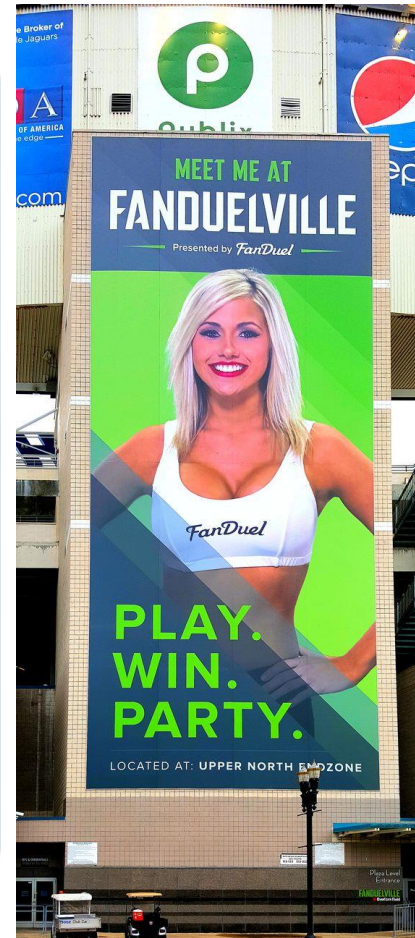
TS32 - Cleveland Browns Food Court
310'W by 13'H Vinyl Banner

Products

TS44

Our sturdiest extruded aluminum bar is designed for medium to very large signs.

It is also used for building structures such as exhibition booths, 3D-signs and stand alone signs.

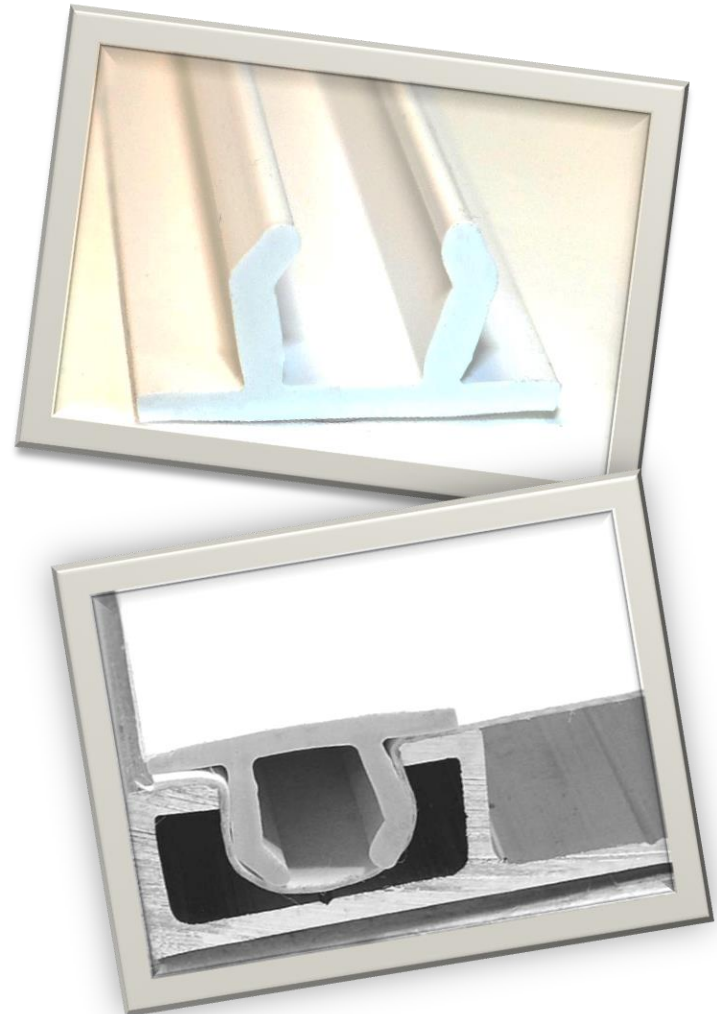


Jaguars Stadium— 96' x 40' Parking – 30' x 50'

Products

TS79W

The top is flat and thick, it has the same thickness on the center and on the sides, making it stronger to absorb hard nylon head hammers blows.



TS79W inserted in TS23

Products Timeline

- **2010**
 - TS21 (Aluminum Extrusion – Low-end)
 - TS44 (Aluminum Extrusion – High-end)
 - TS80 (PVC Extrusion – Locking Strip)
- **2011**
 - TS32 (Aluminum Extrusion – Mid-range)
 - FS100 (Fastening Screw)
- **2012**
 - TS22 (Aluminum Extrusion – Low-end replacing TS21)
- **2013**
 - TS28 (Aluminum Extrusion for Art Frames)
 - TS79B & TS79W (New black & white locking strips replacing the TS80)
- **2014**
 - Brackets for fabricating structures et frames reinforcements
- **2015**
 - Mending Plates product line
- **2016**
 - TS23 (New Version of the TS22)

Extrusions Comparison

| Products Comparison | | | |
|----------------------------------|----------------|----------------|----------------|
| Features | TS23 | TS32 | TS44 |
| OVC Insert Model | TS79B&W | TS79B&W | TS79B&W |
| Clipping on the front | YES | YES | YES |
| Clipping on the side | NO | YES | YES |
| Clipping on the rear (Wrapping) | NO | YES | YES |
| PVC Corners TS90 | NO | YES | YES |
| PVC Joiners TS91 | NO | YES | YES |
| Applications | | | |
| Small frames (1 – 10 Sq Ft) | **** | *** | * |
| Medium Frames (10 – 100 Sq Ft) | *** | **** | ** |
| Large frames (100 – 1,000 Sq Ft) | ** | **** | **** |
| Very Large Frames (>1,000 Sq Ft) | * | *** | **** |
| Interior frames | **** | *** | *** |
| Exterior frames | *** | **** | **** |
| Structures / 3D Frames | NO | YES | YES |
| Characteristics | | | |
| Bar Length (Ft) | 11.4' | 11.4' | 11.4' |
| Bar Weight (Lbs.) | 1.17 | 4.56 | 10.54 |
| Bar Dimensions (Inches) | 3/8"x9/8"x137" | 3/4"x1.3"x137" | 1.5"x2.5"x137" |

Competition

| Characteristics | Tensioning Solutions | Other Suppliers |
|--------------------------|---|-----------------|
| Frame Sizes | Small / Medium / Large / Very Large | |
| Non-Rectangular shapes | TS23 / TS32 / TS44 | |
| Type of Frames | Customized: Any Sizes | |
| Type of Installations | Wall-mounted / ART Frames / Stand-Alone Frames / Stand-Alone Structures | |
| Changing Graphics | Easy - TS23 / TS32 / TS44 | |
| Double-Sided Graphics | TS32 / TS44 | |
| Edge-to-edge Graphics | TS32 / TS44 | |
| Structures / 3D-Graphics | TS32 / TS44 | |
| Curved frames | TS23 / TS32 / TS44 | |
| Cost-effectiveness | TS23 / TS32 / TS44 | |

Features and Benefits

1. Customized Frames (Any sizes, Any shapes)
2. Double-Sided Frames
3. Cost-Effective
4. Multiple Applications
5. Edge-to-Edge Graphics
6. 3D-Graphic structures
7. Aluminum extruded bars can be bent

1. Can answer many customers requests and applications
2. Frames can be hung in shops, supermarkets and malls
3. Sign professionals are competitive in their markets
4. Effective product design allows to build from framed banners to structures
5. Hiding the frame when needed
6. Goes beyond simple 2D frames
7. Allows to design curved frames or fitting on curved walls

Contact

TENSIONING SOLUTIONS

- 16517 Lake Heather Drive
- Tampa, FL 33618

Office

- 1 800-436-8242

Cell

- 1 813-995-5256

Fax

1 813-527-9915

Email

info@tensols.com

Web Site

www.tensioningsolutions.com