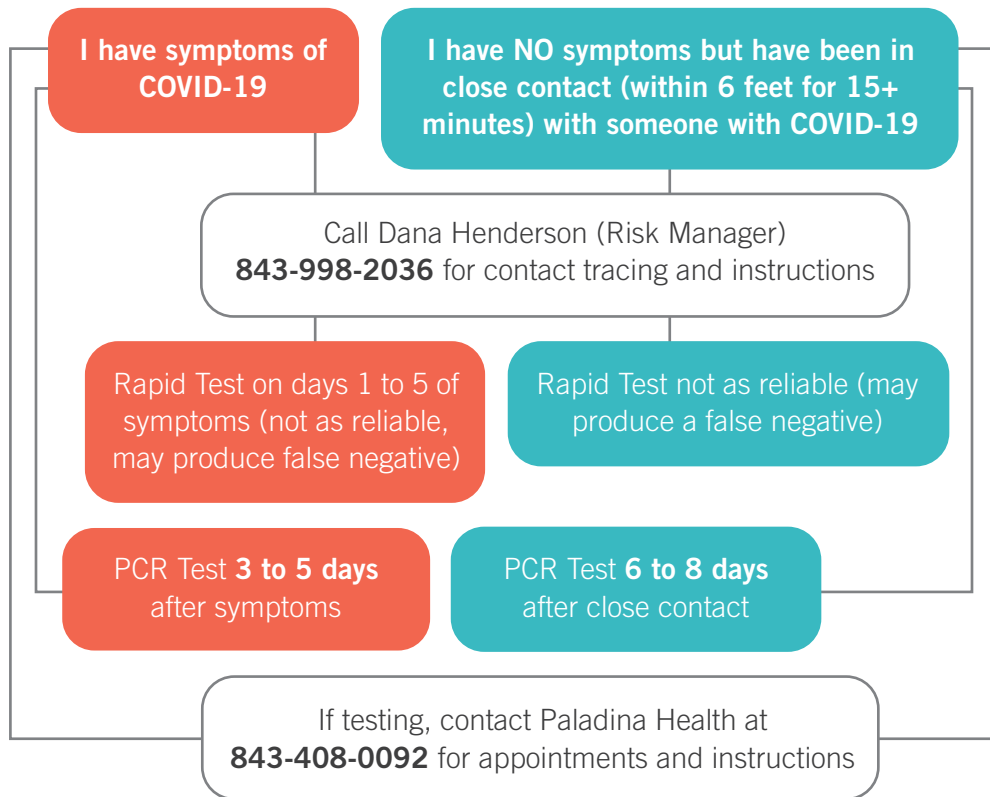


# What if I have COVID-19 symptoms or exposure?



## Symptoms of COVID-19:

- Fever
- Chills
- Cough
- Shortness of breath
- Sore throat
- Chest pain
- Fatigue
- Muscle or body aches
- Diarrhea
- Nausea or vomiting
- New loss of sense of smell/taste
- Congestion/runny nose
- Headache

## What is the PCR Test?

The PCR Test (also known as the NAA, molecular, or RNA test), is the most accurate test. Like the rapid test it, uses a swab from the front of the nose

## How soon are Rapid Test results available?

15 minutes after the test (but may produce a false negative)

## How soon are PCR Test results available?

2 to 3 days after the test (this test is very reliable when done at the right time – see above for details)

## What is “close contact” that requires quarantine and possible testing?

Being within 6 feet of someone with COVID-19:

- for at least 15 minutes
- with or without masks
- up to 2 days before he/she began to have symptoms and while he/she has symptoms

