



CASCADE TOWERS

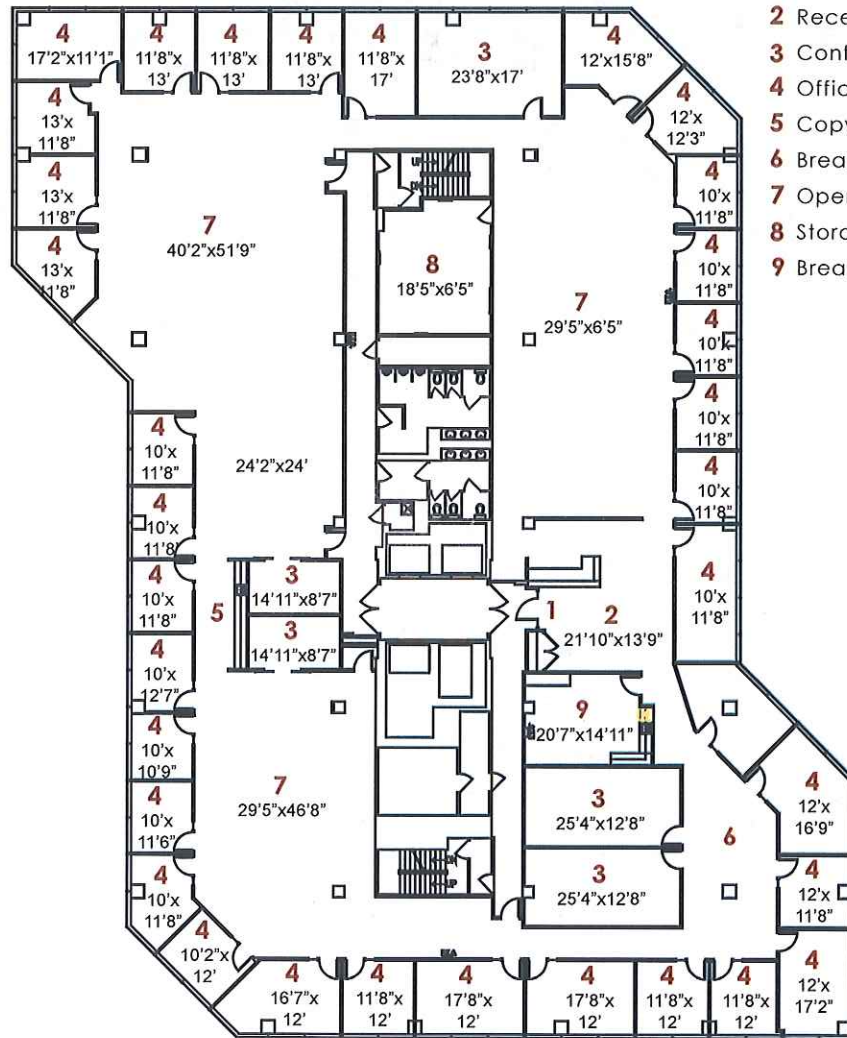
East Tower Suite 700

20819 72nd Avenue South, Kent, WA 98032

Twin 8-Story Class A Office Towers with a Fountain and Central Pedestrian Promenade.



18,466 R.S.F



- 1 Entry
- 2 Reception
- 3 Conference Room
- 4 Office
- 5 Copy/Work Room
- 6 Break-out Area
- 7 Open Office Area
- 8 Storage/I.T.
- 9 Break Room

(253) 395-9226

Rob Samuels | Leasing Coordinator
RobS@FountainheadNW.com

CREATING THE **BEST PLACE**
FOR THE **BEST PEOPLE** TO WORK.



www.FountainheadNorthwest.com

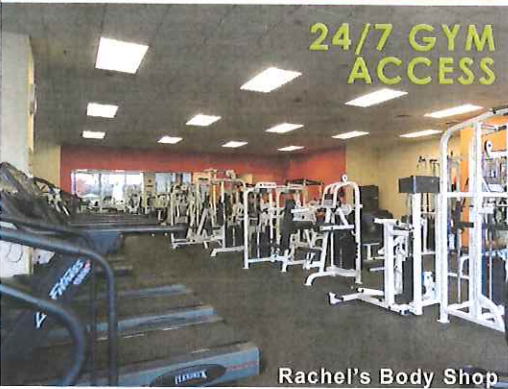
The Cascade Towers at CenterPoint Corporate Park.

ENGAGE YOUR
EMPLOYEE'S NEEDS...

»» CULTURE & AMENITIES ««



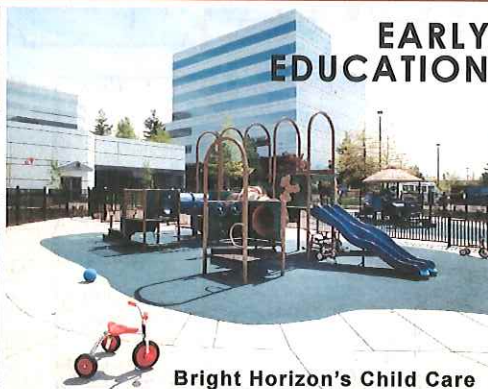
- 1/4 & 1/2 Mile Outdoor Fitness Paths with Stretching Station
- On-Site Management, Engineering & Design Team
- Corporate Barbeque Areas
- Nature trail along Mill Creek
- Conference Center with rooms up to 200 people



24/7 GYM
ACCESS

Rachel's Body Shop

Full service 24/7 fitness center & personal training (www.rachelsbodyshop.com)



EARLY
EDUCATION

Bright Horizon's Child Care

Providing infant to pre-kindergarten programs (www.brighthorizons.com)



FULL
SERVICE

Alki Bakery Cafe

Providing breakfast, lunch & catering services. (www.alkibakery.com)

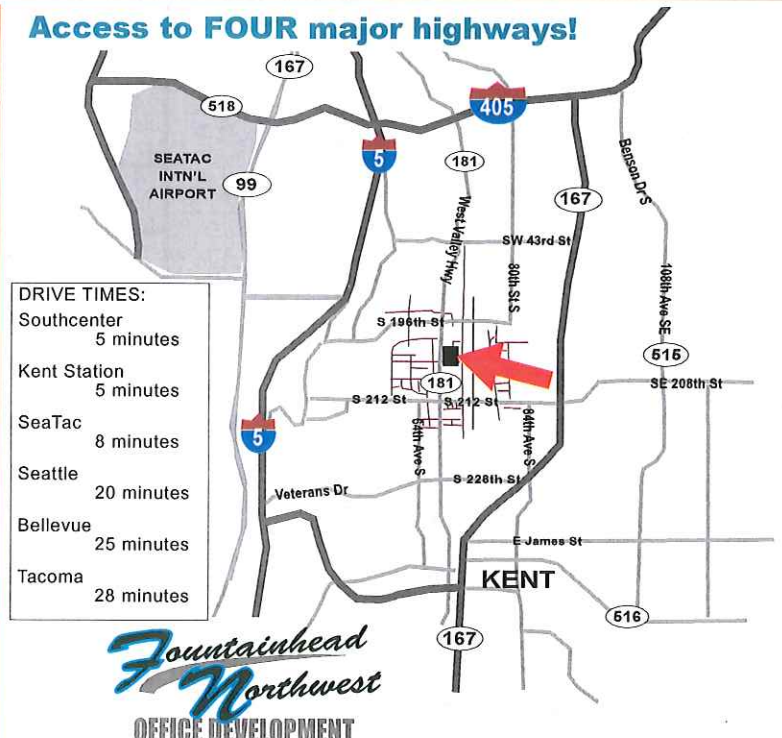
CLOSE TO
EVERYTHING..

- Shopping
- Hotels
- Restaurants
- Entertainment
- Schools
- Housing

+ ON SITE
TRANSPORTATION ROUTES

FOR MORE INFORMATION
www.FountainheadNorthwest.com
253-395-9226

Access to FOUR major highways!



Fountainhead
Northwest
OFFICE DEVELOPMENT