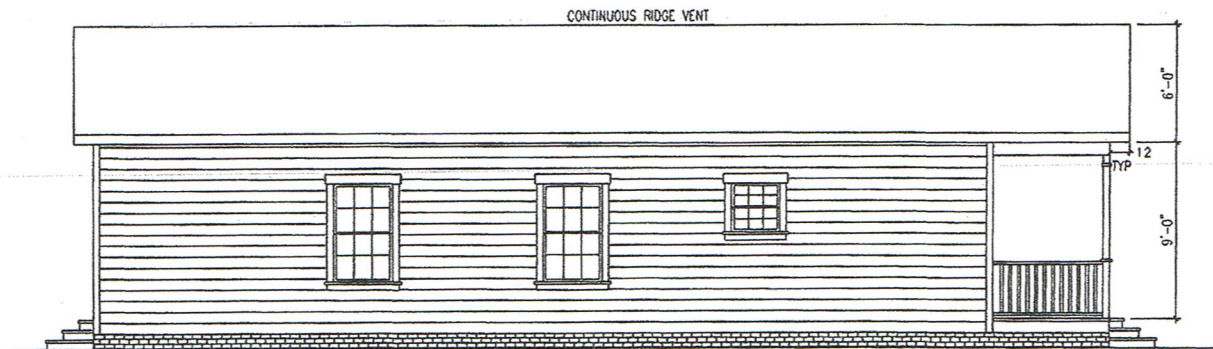
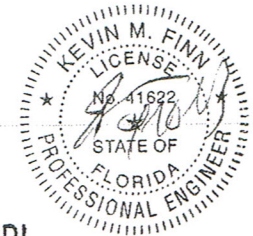


REAR EXTERIOR

Date 4/15/13 Plan No. MO523 304
 Approved By R. Russell 108
 Richard L. Bullock
 Modular Building Plans Examiner Florida Certificate No. 2222



LEFT EXTERIOR



NDI
 "APPROVED"
 DOCUMENT

1. SEE CROSS SECTION FOR METHOD OF ROOF VENTILATION
2. FOUNDATION ENCLOSURE (WHEN PROVIDED) MUST HAVE ONE SQUARE FOOT NET VENT AREA PER 1/150TH OF THE FLOOR AREA.
3. A 22"x36" MINIMUM CRAWL SPACE ACCESS AND A 6 MIL POLY GROUND COVER, SITE INSTALLED BY OTHERS AND SUBJECT TO LOCAL JURISDICTION.
4. STEPS, RAILS, & DECKS TO BE DESIGNED AND BUILT BY OTHERS ON SITE, IN ACCORDANCE WILL LOCAL CODES REQUIREMENTS AND INSPECTIONS.

FINER LINES
 DESIGN & CONSTRUCTION, INC

DATE: 11/8/2012	3RD PARTY INSPECTION AGENCY
CODES: FBC 2010	National Design & Inspection (NDI)
LABELS: FLORIDA	501 N. Jackson Ave.
SCALE: NTS	Spars Bld. Suite #2 Russellville, AL 35653 Contact: Danny Kennemur
MODEL: MC523-304-108 R1	DRAWN BY: Jerry Benton
DRAWING: EXTERIOR ELEVATION	SHEET 3
ENGINEERING & PLAN DEVELOPMENT KEVIN M. FINN, P.E.	1716 ELKHART RD. 2ND FLOOR COSHEN, IN 46526 FL LICENSE NO. 41622