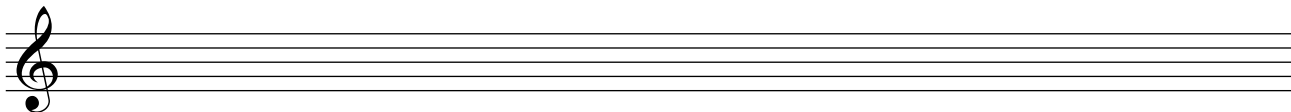


# FLAT scales with key signatures exercises

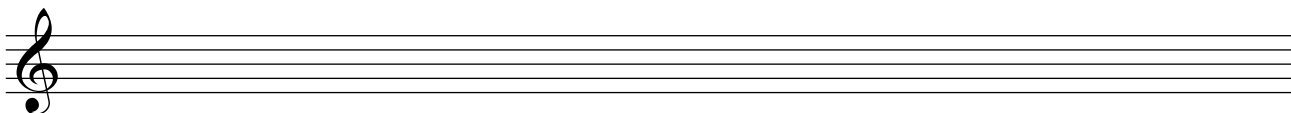
1. Write the following scales with key signatures ascending in the treble clef using whole notes. Name the KEY. Label the TONIC and LEADING NOTE:

a) the scale with a key signature of 2 flats



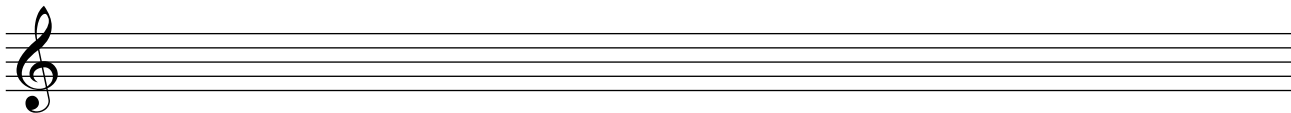
KEY:

b) the scale with the leading note of C



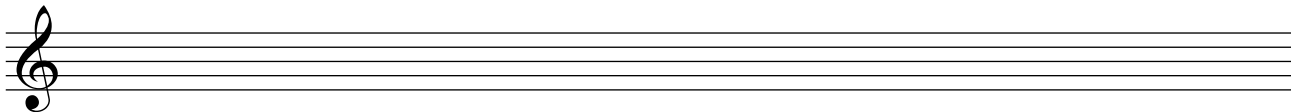
KEY:

c) the scale with the dominant of D $\flat$



KEY:

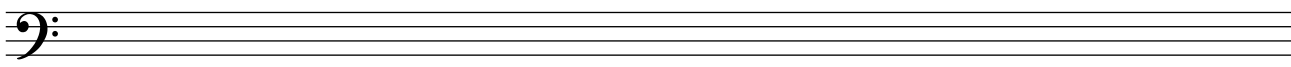
d) the scale with the key signature of 3 flats



KEY:

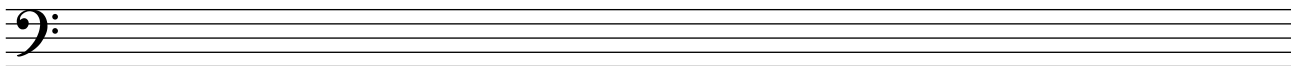
2. Write the following scales with key signatures descending in the bass clef using whole notes. Label the TONIC and DOMINANT and LEADING NOTE:

a) the scale with a key signature of 4 flats



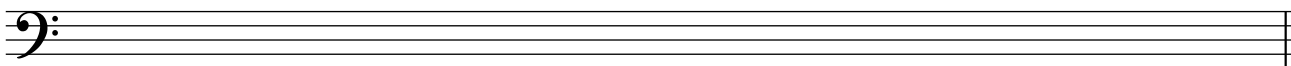
KEY:

b) the scale with a leading note of E



KEY:

c) the scale with the leading note of B $\flat$



KEY: