

# KF Fittings

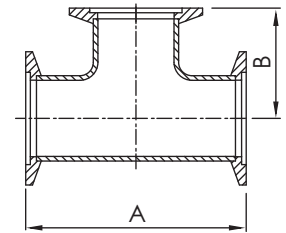
## KF EQUAL TEES

\*Material: SS 304L

\*Tube Finish: Bead Blast



Part Number	Flange Size	A	B
KF-ET-10	KF10	63.50	31.75
KF-ET-16	KF16	58.40	29.20
KF-ET-16-1	KF16	80.00	40.00
KF-ET-25	KF25	100.00	50.00
KF-ET-25-1	KF25	102.80	51.40
KF-ET-40	KF40	122.00	61.00
KF-ET-40-1	KF40	130.00	65.00
KF-ET-50	KF50	140.00	70.00
KF-ET-50-1	KF50	160.00	80.00



**K F  
DN**

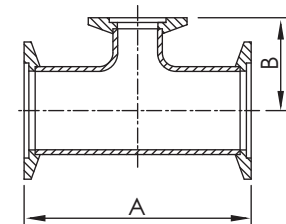
## KF REDUCING TEES

\*Material: SS 304L

\*Tube Finish: Bead Blast



Part Number	Flange Size	A	B
KF-RT-25x16	KF25/KF16	100.00	27.80
KF-RT-25x16-1	KF25/KF16	100.00	43.20
KF-RT-25x16-2	KF25/KF16	103.10	32.25
KF-RT-40x16	KF40/KF16	121.90	38.85
KF-RT-40x16-1	KF40/KF16	130.00	34.00
KF-RT-40x16-2	KF40/KF16	130.00	49.50
KF-RT-40x25	KF40/KF25	121.90	57.91
KF-RT-40x25-1	KF40/KF25	130.00	56.40
KF-RT-50x16	KF50/KF16	140.00	40.10
KF-RT-50x16-1	KF50/KF16	140.00	55.90
KF-RT-50x16-2	KF50/KF16	160.00	45.20
KF-RT-50x25	KF50/KF25	140.00	62.70
KF-RT-50x40	KF50/KF40	140.00	71.40
KF-RT-50x40-1	KF50/KF40	160.00	67.31



\*Note: SS 316L Material Available on Request.

\*Note: Polished and Electro- Polished Tube Finishes Available on Request.