

Distributed by:

**WATER CONTROLS  
& PUMP SYSTEMS**

808-876-0132

www.watercontrols.com

**WATERTRONICS™**  
A LINDSAY COMPANY

## PRE-FABRICATED VERTICAL TURBINE PUMPING SYSTEMS



CUSTOM ENGINEERED TO MEET YOUR NEEDS



## CERTIFIED PERFORMANCE TESTING



Prior to delivery, every pump station is tested at full flow and capacity at our Dynamic Test Pit Facility. This process fine-tunes pump station operation, reduces set-up time, and guarantees pump performance exactly as promised.

## Why choose Vertical Turbine Pumping Technology?

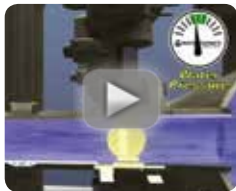
Ideal for pumping from reservoirs, rivers and wells, the vertical turbine (VT) system from Watertronics® is a single source solution that can meet virtually any pressure and flow requirement regardless of water lift or depth. Engineered for continuous duty in challenging environments, the VT is reliable, rugged, and long-lasting.

Your pump station arrives pre-packaged and factory tested, ready for quick installation and start-up. With proven reliability and pumping efficiency, the VT offers a cost-effective solution and can be fully customized to meet your needs.

### USER-FRIENDLY SOFTWARE

**VirtualVision™ Touchscreen** – Easy-to-use operator interface features full color touch screen display for monitoring alarms, changing pump sequencing, adjusting downstream pressure, changing filter flush duration, recording or resetting water usage, calibration, and much more.

**Watervision® Cloud web-based telemetry**– Monitor and control your pump station anytime, anywhere – from any web-enabled device. Our software interfaces with most major irrigation control software to maximize the efficiency of your system.



Watch the EBV in action at [YouTube.com/Watertronicsinc](https://www.youtube.com/Watertronicsinc)

### ADVANCED CONTROLS

**Smart pump sequencing logic** – Our advanced pump logic uses actual pump curve data to provide intelligent sequencing for optimal wire-to-water efficiency.

**Reservoir level controls** – Stainless steel level transducer is unaffected by water quality, providing repeatability down to a fraction of an inch. Allows for adjustable start/stop reservoir level set points and graphing capability.

**Flow-based pressure regulation** – Energy-saving variable pressure regulation set points follow your system resistance curve using only as much energy as needed to meet the irrigation system's demand.

**Electronic Butterfly Valve (EBV)\*** – Patented system complements VFD controls by pressure regulating each across-the-line pump and provides 100% backup pressure regulation in the event of a VFD fault.

### SUPERIOR QUALITY

**Unitized skid construction** – Single continuous sheet of pre-punched steel that's free of welding seams or cracks to prevent rust. Structural steel is welded underneath to maximize strength.

**Superior paint quality** – Components are painted individually prior to station assembly. Our multi-step coating system produces a durable, corrosion-resistant product. Additional options include galvanized stainless steel or aluminum construction.

**FCC Compliant** – All products are tested to meet FCC compliance standards.

*\*optional feature*



### BENEFITS:

- Immediate water and energy savings up to 25%
- Advanced Controls save time and labor
- Precise pressure regulation promotes uniform water application
- Pre-Tested and Certified for site-specific conditions
- Arrives as a factory-assembled unit for fast installation





## ANATOMY OF AN EFFICIENT VERTICAL TURBINE

HIGH-PRESSURE DUCTILE IRON DISCHARGE HEADS OFFERS 65,000 PSI TENSILE STRENGTH WITH UNIQUE DUAL-PORT AIR RELEASE SYSTEM FOR COMPLETE PURGING OF AIR

CLIMATE-CONTROLLED NEMA 4 CABINET

INVERTER DUTY, ENERGY-EFFICIENT VHS MOTORS

VirtualVision PRO TOUCHSCREEN



OPTIONAL MAINTENANCE-FREE MECHANICAL SEAL ELIMINATES WATER SPRAY

PUMPS HAVE STAINLESS STEEL IMPELLERS AND PORCELAIN LINED BOWLS FOR OPTIMUM FLOW EFFICIENCY

REINFORCED ROLLED STEEL BASE WITH TWO-STEP BAKED-ON POLYURETHANE FINISH

### WORLDWIDE PUMP SERVICE NETWORK (PSN)

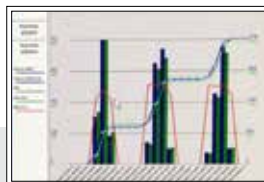
Our Pump Service Network (PSN) Service Partners employ technicians with extensive training and experience servicing pumping systems.

They specialize in servicing pumps, motors, controls, valves, filtration, chemical injection and telemetry. Beyond Watertronics pumping systems, PSN Service Partners provide service and parts sales to any customer, regardless of their pump station's age, configuration or brand.

Through our PSN Service Partners, we support more than 7,000 pump stations in operation throughout the world.



Watertronics® proprietary logic allows VFDs to achieve near perfect pressure regulation



VirtualVision™ PRO touch screen — simple yet powerful features to help manage your system, at your fingertips or remotely



Watervision Cloud provides remote pump station monitoring from any web-enabled device



### 100% WARRANTY COVERAGE

Watertronics provides a one-year full coverage warranty for all parts, components, and labor with a Certified Watertronics Service Partner.

### SINGLE-POINT RESPONSIBILITY

## AVAILABLE OPTIONS THAT MAKE A DIFFERENCE

- Custom-built corrosion-free composite enclosures
- Enclosure heaters and air conditioners
- Enclosure insulation
- Mechanical seal to replace stuffing box

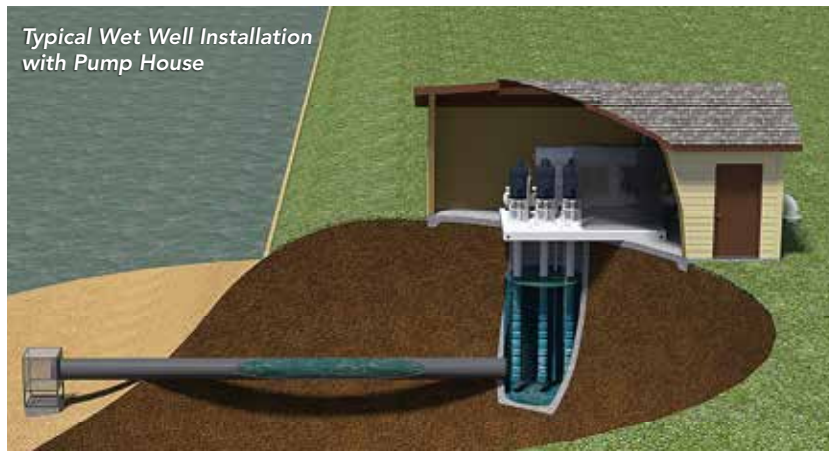
**Jockey Pumps** – Eliminate the need to run a larger main pump for applications such as syringing and hand watering. Allows main pumps to come on line only when a higher flow is required.

**Sustain Pumps** – Keep the system pressurized and allow for hand watering.

- Chemical injection
- Premium surge protection
- Choice of station colors (sandstone, green, custom)



To learn more about Watertronics, visit [www.watertronics.com](http://www.watertronics.com).



Typical Wet Well Installation  
with Pump House

## WHY WATERTRONICS?

For more than 30 years, Watertronics® a Lindsay Company, has been designing and manufacturing custom pumping solutions for the golf, landscape, municipal, and agriculture markets. It's our mission to provide the most reliable pumping systems available. Our engineering expertise and advanced software applications have distinguished our pumping systems the industry standard for reliability, ease of use, and energy efficiency.

## CERTIFIED EXPERTS

As a UL508 facility, Watertronics provides UL-rated controls that can meet IEEE 519 standards, for harmonic control. Watertronics builds to NFPA 70® National Electric® code standards.

For more information on how Watertronics® pumping solutions can benefit your golf project, or to contact a regional sales manager in your area, please visit [www.watertronics.com](http://www.watertronics.com)



1-800-356-6686 • [www.watertronics.com](http://www.watertronics.com)

INT'L (+1) 262-367-5000



**Lean, Clean and Green.** Lindsay Corporation is committed to developing environmental awareness and implementing sustainable practices to reduce the use of and protect energy, water, and all other resources.



© 2014 Lindsay. All rights reserved. Watertronics and FieldNET are registered trademarks of the Lindsay Corporation.  
NFPA 70® and National Electric Code® are registered trademarks of NFPA.  
® Rain Bird is a registered trademark of Rain Bird Corporation.  
© TORO copyright 2014. The TORO is a registered trademark of the Company.

VT PUMP BRO 0915