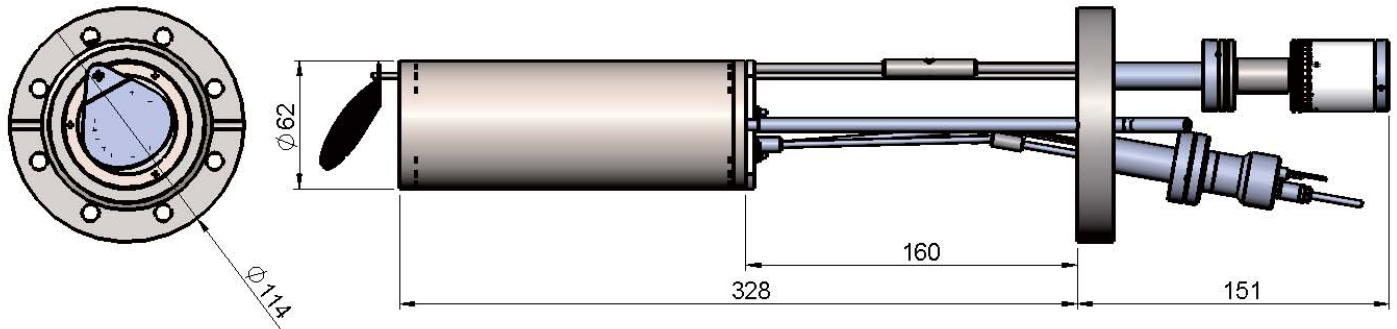


Evaporators

High Capacity Effusion Cell



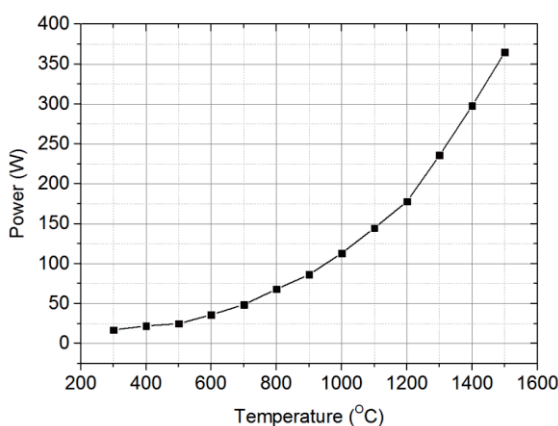
All dimensions in mm

For some special applications, such as production MBE systems, high throughput and stability are both critical. Thus, high capacity Effusion Cell are designed to meet the requirement.

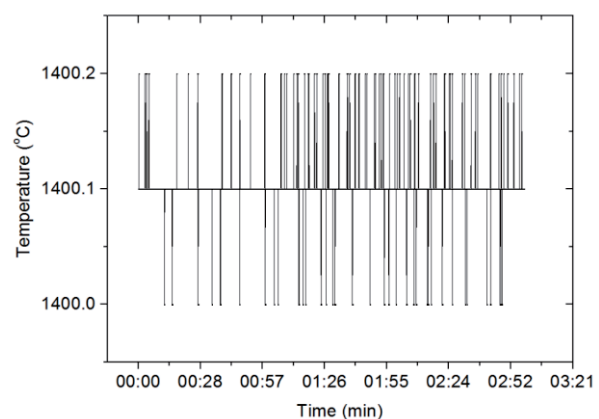
Similar to the standard Effusion cell, the crucible is heated by a wire filament supported by PBN rings which proves to be a uniform and effective heating. However, by increase the mounting flange from NW38CF to NW63CF, the crucible volume increase significantly from 10cc to 30 CC. The scale up crucibles will need more powers which will leads to undesirable degas for the UHV system. To prevent this from contaminating the UHV environment, the shielding around the heating element is optimized and integrated water cooling shroud is a standard element in high capacity effusion cells.

The compatible design makes this cell compatible with standard MBE systems. Besides standard filament configurations, Hot Lip/Cold Lip and dual filament configurations are also available to meet the specified requirements of the evaporation materials.

Mounting Flange	Crucible Size (cc)	Working Temperature (°C)	Degas Temperature (°C)	Thermocouple	Stability (°C)	Part Number
NW63CF (4.5 inch)	30	100~1100	1200	K	0.1	HCEC2LT
		300~1400	1500	C	0.1	HCEC2MT



Power Test



Temperature Stability