

METAL MOULDING

GLOBAL ART INC. www.globalartinc.com 866-310-4278



71
13/32" depth
9/13" face



72 / 725
1" depth 3/4" depth
5/16" face 1/2" face



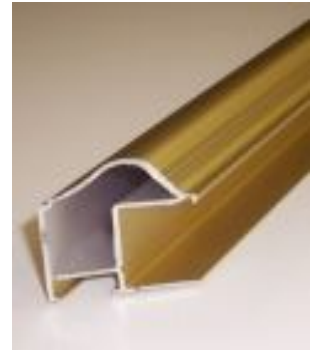
74
9/16" depth
7/16" face



80
1" depth
1" face



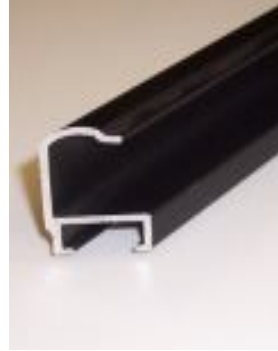
81
7/16" depth
3/8" face



84
1" depth
1- 1/4" face



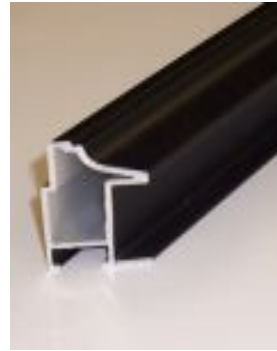
88
1" depth
1" face



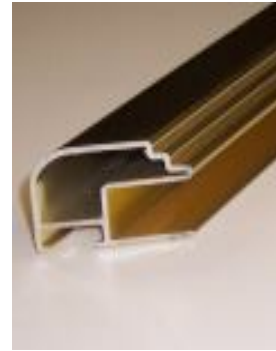
90
9/16" depth
9/16" face



91
5/8" depth
1-1/8" face



92
1" depth
1" face



93
1" depth
1" face



431
1-1/2" depth
includes glass channel
1- 3/8" face



437
1-1/4" depth
9/16" face



481
1- 1/2" depth
11/16" face



220
1-1/2" depth
includes glass channel
1" face



626
5/8" depth
1- 1/4" face



656
1/2" depth
1" face



501
5/8" depth
FLOAT FRAME