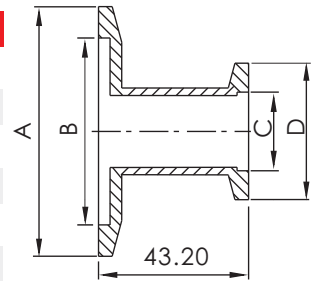


KF Fittings

KF STRAIGHT REDUCING NIPPLES

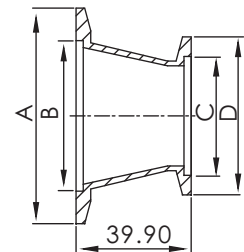
*Material: SS 304L



Part Number	Flange Size	A	B	C	D
KF-SRN-25x16	KF25/KF16	40.00	26.20	17.20	30.00
KF-SRN-40x16	KF40/KF16	55.00	41.20	17.20	30.00
KF-SRN-40x25	KF40/KF25	55.00	41.20	26.20	40.00
KF-SRN-50x16	KF50/KF16	75.00	52.20	17.20	30.00
KF-SRN-50x25	KF50/KF25	75.00	52.20	26.20	40.00
KF-SRN-50x40	KF50/KF40	75.00	52.20	41.20	55.00

KF CONICAL REDUCING NIPPLES

*Material: SS 304L



Part Number	Flange Size	A	B	C	D
KF-CRN-25x16	KF25/KF16	40.00	26.20	17.20	30.00
KF-CRN-40x16	KF40/KF16	55.00	41.20	17.20	30.00
KF-CRN-40x25	KF40/KF25	55.00	41.20	26.20	40.00
KF-CRN-50x16	KF50/KF16	75.00	52.20	17.20	30.00
KF-CRN-50x25	KF50/KF25	75.00	52.20	26.20	40.00
KF-CRN-50x40	KF50/KF40	75.00	52.20	41.20	55.00

**K F
DN**

*Note: SS 316L or Aluminum Material Available on Request.

*Note: Polished and Electro- Polished Tube Finishes Available on Request.