

D= 20,650 SF

CEIL: 18' 6"  
CLR: 16' 6"

C= 14,127 SF

CEIL: 18' 6"  
CLR: 16' 6"

B= 37,186 SF

CEIL: 18' 9"  
CLR: 16' 6"

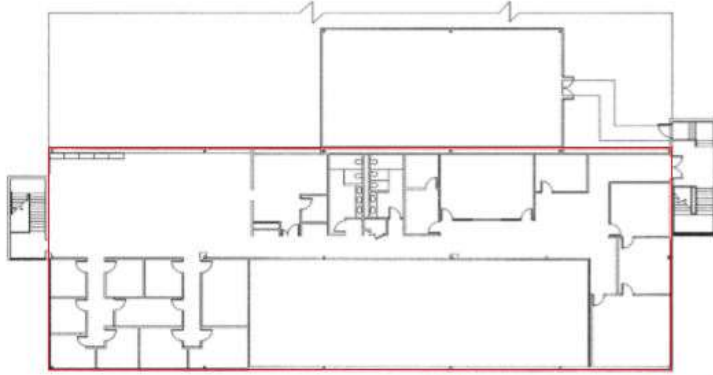
2,600 SF Area

CEIL: 30'  
CLR: 28' 7"

A= 13,890 SF

CEIL: 34' 6"  
CLR: 32'

FIRST FLOOR = 85,853 SF TOTAL



SECOND FLOOR = 8,321 SF TOTAL