



**New!!!**

# Rapid Diagnosis of UTI

*Why use dipslide when there's*

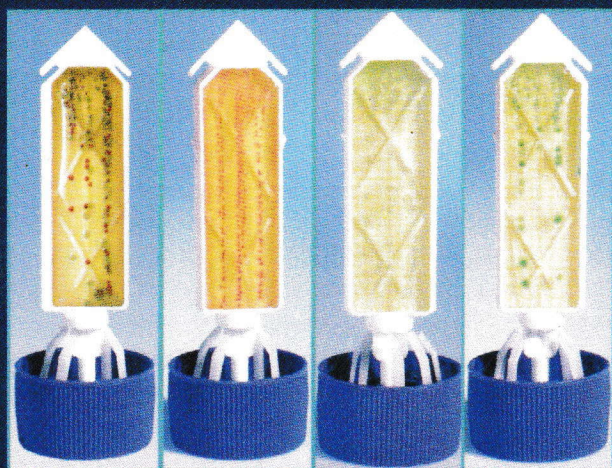
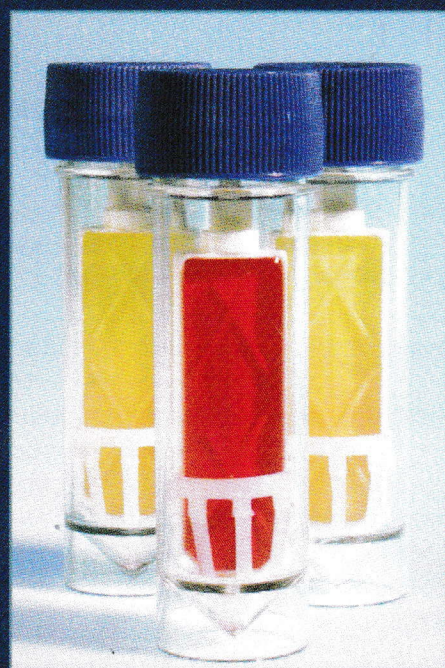
## CHROMOSTREAK?

(Chromogenic streaking dipslide)

- transport
- isolation
- enumeration
- presumptive identification of urinary pathogens

### Combination of three advantages:

- Compact and safe as urine dipslide
- Streaking and colony isolation as with classical plating
- Rapid identification of microorganisms by color



- Unique streaking inoculation mechanism
- Rapid identification of mixed cultures
- No false-positive results
- Can be performed by patient himself
- Safe: closed system
- Store at room temperature



# ChromoStreak - Streaking Dipslide for Rapid Diagnosis of Urinary Tract Infection

**the novel method for transport, isolation, enumeration and presumptive identification of bacterial contamination in urine samples, based on the type and color of the colonies.**

ChromoStreak is an attractive, convenient, safe, accurate, easy-to-use and time-saving screening method for the reliable detection, counting and direct or presumptive identification of most common urinary pathogens.

**ChromoStreak** is a new urine culture device that combines dip-slide technology with an original streaking inoculation mechanism of two media allowing bacterial count, colony isolation and identification.

**ChromoStreak** offers the combined advantages of the urine dipslide, the classical plate isolation and the rapid identification methods.

**ChromoStreak** can be easily inoculated at the collection sites even by the patient and then sent to the laboratory without the problems of bacterial overgrowth.

**ChromoStreak** allows the rapid detection of mixed cultures in acute and ambulatory patients, and direct or presumptive identification of the causative microorganisms.

**ChromoStreak** solves logistical problems by preventing an unacceptable rate of false-positive results.

**ChromoStreak** is intended for use in both physicians' office and clinical laboratories.

**ChromoStreak** is approved for diagnostic use in the USA.

**ChromoStreak** may be stored at room temperature up to 4 months (2-8°C up to 8 months).

**The following agar combination is available: BD-915 – UriSelect3/MacConkey**

\***ChromoStreak UriSelect** (Uri Select 3, Bio-Rad Laboratories) a non-selective rich nutrient base agar media for the isolation and enumeration of all urinary tract microorganisms. The composition of the chromogenic media has been optimized to ensure the fast detection of such specific bacterial enzymes as  $\beta$ -glucuronidase and  $\beta$ -glucosidase for the direct identification of microorganisms which grow on the medium. ChromoStreak UriSelect provides a direct identification of *E. coli* (purple colony), *Enterococcus* spp (blue colony), *Proteus* spp (yellow-brown colony) and presumptive identification of KES group (*Klebsiella*, *Enterobacter*, *Serratia* sp) and group B *Streptococcus* spp (blue-green colony).

## INTERPRETATION OF RESULTS

In the past, the presence of  $> 10^5$  CFU/ml was regarded as a positive result while  $< 10^4$  CFU/ml was negative. From  $10^4$  to  $10^5$  CFU/ml were considered borderline cases, which called for repeat examination. Today, the trend is for specific medical departments such as Urology, Nephrology and Pediatrics to report down to  $10^3$  CFU/ml. A colony density chart is supplied for reporting results. If bacterial growth yields three or more different kinds of colonies, this is most likely due to contamination. The test should be repeated. Preliminary identification of the bacteria can be made based on type and color of colonies.