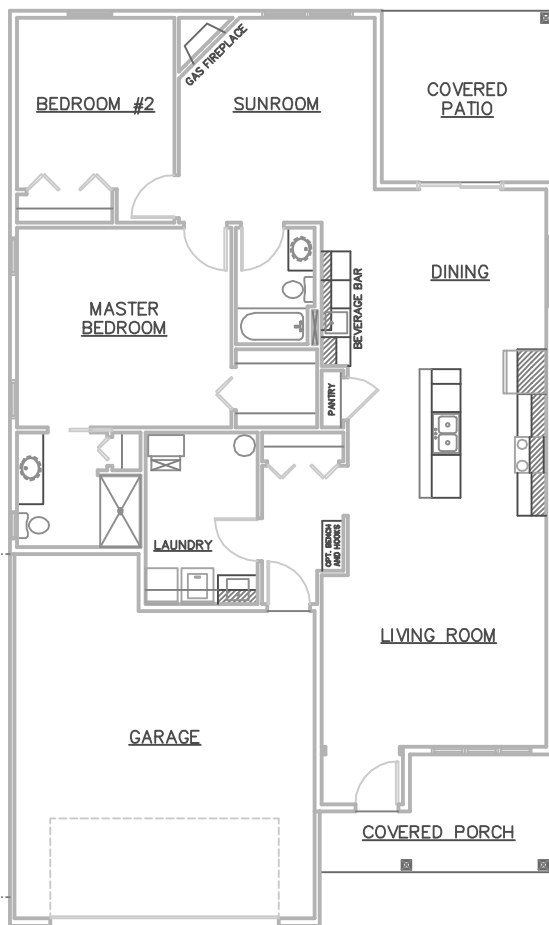




SOME OPTIONS MAY BE SHOWN



- \* 2 BEDROOMS, 2 BATHS
- \* 1,609 SQUARE FEET
- \* OPEN FLOOR PLAN
- \* SUN ROOM
- \* WALK-IN-CLOSET
- \* COVERED FRONT PORCH

### ROOM SIZES

MASTER BEDROOM	15' X 14'
BEDROOM #2	11' X 12'
LIVING ROOM	15'-8" X 16'-2"
DINING	13'-8" X 12'-6"
KITCHEN	13'-10" X 11'-8"
SUN ROOM	13'-8" X 14'-4"



3475 Vermillion Street, Suite 101 ~ Hastings, MN 55033 ~ 651.437.3700 ~ [www.gregjhomes.com](http://www.gregjhomes.com)