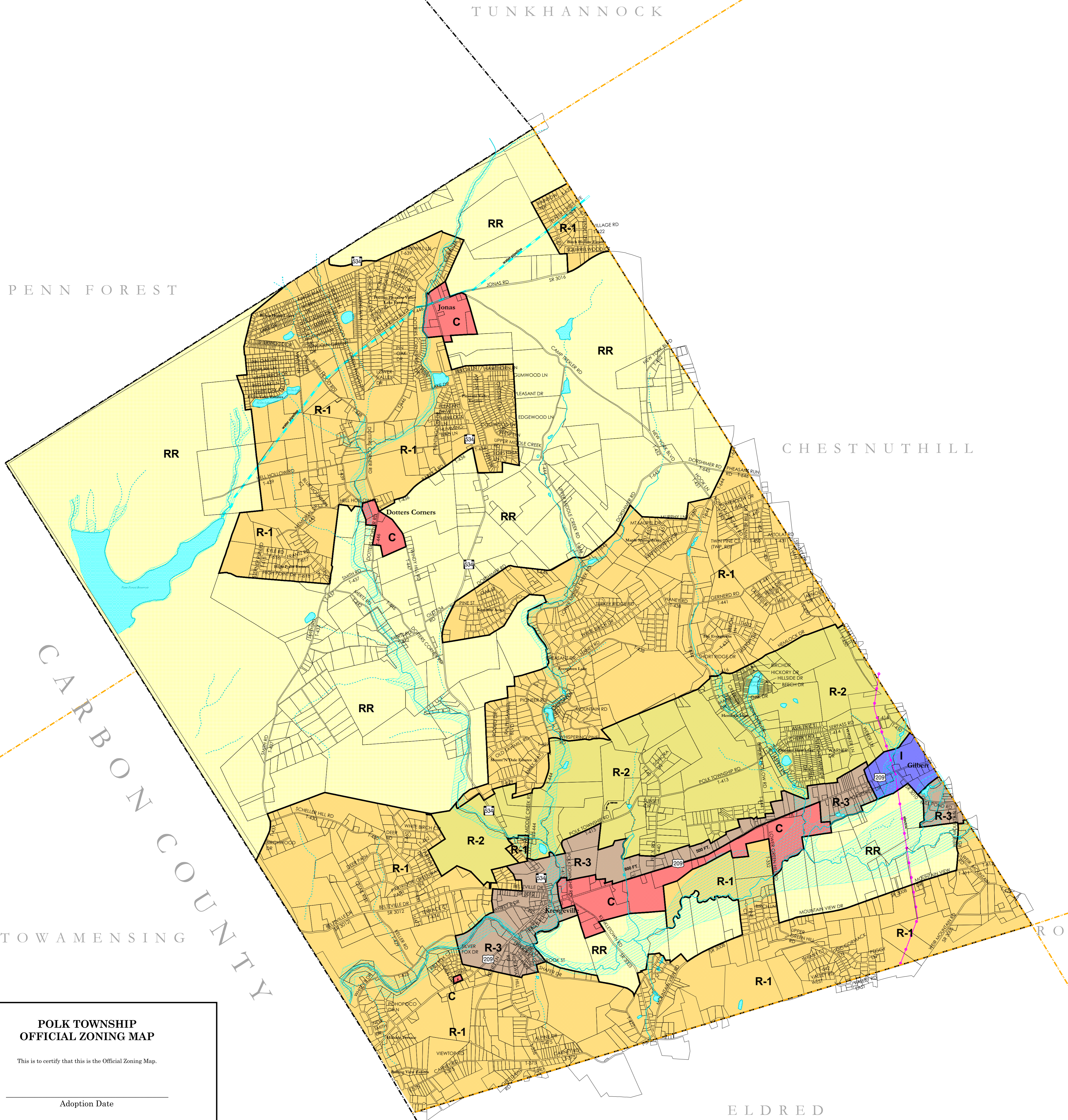


# OFFICIAL ZONING MAP OF POLK TOWNSHIP MONROE COUNTY, PENNSYLVANIA



### POLK TOWNSHIP OFFICIAL ZONING MAP

This is to certify that this is the Official Zoning Map.

Adoption Date \_\_\_\_\_

Supervisor: Chairman \_\_\_\_\_

Supervisor: Vice-Chairman \_\_\_\_\_

Supervisor: Secretary \_\_\_\_\_

SECTION 3.2-e ZONING MAP  
"This is to certify that this Official Zoning Map supersedes and replaces the Official Zoning Map adopted on 9/9/85 as part of the Polk Township Zoning Ordinance, Polk Township, Monroe County, Pennsylvania."

#### LEGEND

- |                                 |                       |
|---------------------------------|-----------------------|
| Polk Twp. Zoning Districts      | Tax Parcels           |
| C - Commercial                  | Waterbodies           |
| I - Industrial                  | Streams               |
| R-1 - Residential               | Intermittent Drainage |
| R-2 - Rural/Village Residential | Major Utility Lines   |
| R-3 - Village Center            | Electric              |
| RR - Rural Residential          | Water                 |
| Special Flood Hazard Area       | County Boundary       |
|                                 | Municipal Boundary    |

0.5 0 0.5 Miles

1:24000



*The County of Monroe makes no express or implied warranties concerning the release of this information. The County of Monroe is unaware of the use or uses to be made of this data. Consequently, the County of Monroe does not warrant this data as fit for any particular purpose.*



[www.co.monroe.pa.us/planning](http://www.co.monroe.pa.us/planning)

PREPARED BY

**Monroe County  
Planning Commission**

1 Quaker Plaza, Room 106  
Stroudsburg, PA 18360-2169  
(570) 517-3100  
mcp@co.monroe.pa.us

December 2005  
Edited May 2010