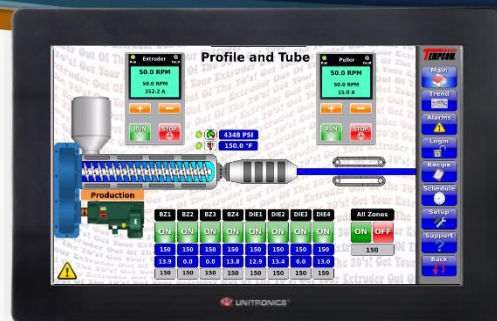


Technical Data Sheet

Standard Extruder Control System

Very little has changed in the mechanical components of extruders in the past 20 years. What has changed is the technology in controlling and monitoring the performance of extruders. The TEMPCOM® Standard Series is a cost-effective extruder control system primarily designed for mono-extrusion lines. It that can be integrated onto older extruders resulting in higher efficiency, longer heater life and better process control. It is easy to use and highly diagnostic, reducing training and downtime. It contains the following innovations:



STANDARD SERIES

APPLICATIONS

- Pipe & Profile Extrusion
- Blown Film Extrusion
- Wire & Cable Extrusion
- Compounding & Pelletizing

SYSTEM SPECIFICATIONS

- Temperature Control
 - 24 Temperature Zones
 - Single or Three Phase
 - Heat/Cool, Heat Only
 - Cooling (Air, Water, Oil)
 - Extruder Preheat
 - Soak Feature
 - Broken Probe Alarm
 - Loop Break Alarm
- Temperature Monitor Zones
 - 2 Temperature Zones
 - Melt, Oil, Water, etc.
 - High Temperature Monitor
- Pressure/Load Cell/Gauge Control
 - 2 Pressure/Load Cell Inputs
- Variable Speed Drive Control
 - AC or DC Drives
 - Control of Start/Stop/Speed
 - Monitor Speed/Load/Run/Fault
 - Control Methods
 - Analog/Discrete
 - TCP/IP (Yaskawa, ABB)
- Program Features
 - System Cloning
 - Recipe Control (24 recipes)
 - Scheduler (Pre-Heat)
 - Set-Up (PID tuning, Pressure Calibration)
 - Screen Trending

- Optional Control Features
 - Laser Mike Input
 - Winder Controls
 - Accumulator Controls
- Protective Features
 - Cold Zone Start Inhibit
 - High Temperature Shutdown High Pressure Shutdown
 - Warning (Yellow) and Fatal (Red) Alarms
 - Alarm Page with Time and Date Stamp
 - Enclosure Temperature Monitor
- Security
 - 4 Levels
 - Restricted Operator
 - Operator
 - Supervisor
 - Maintenance
- Data Collection
 - Extruder Performance Trending
 - Fault Logging and Fault History



STANDARD FEATURES

- Main Screen is a Graphical Representation of the Process with Animation of the Extruder Configuration for Ease of Use
- Better Process Control with Tighter Tolerance that Extends Heater Life
- Diagnostic Minimizing Downtime and Maintenance Training
- Wire Numbers Indicate Page and Location of the Wire in the Electrical Drawings
- Heavy Duty Industrial 10 Gauge Steel Enclosure
- Custom Paint for enclosure
- Flange Mounted Circuit Breaker
- Door-Mounted Drive Operator Keypads

TECHNICAL SPECIFICATIONS

- Door-mounted 12.1" Color Touchscreen
- 5 Standard Enclosure Configurations
 - Single Door (84" x 40" x 24")
 - Double Door (84" x 78" x 24")
 - Inverted-L Single Door
 - Inverted-L Double Door
 - Side-Mount (Twin Screw)
- All AC Drives will have Individual Circuit Breakers and AC Line Reactors
- Thermocouple Inputs – J Type
- 5,000 Amp Short-Circuit Rating
- UL508A Rating

WARRANTY

- 1 Year

