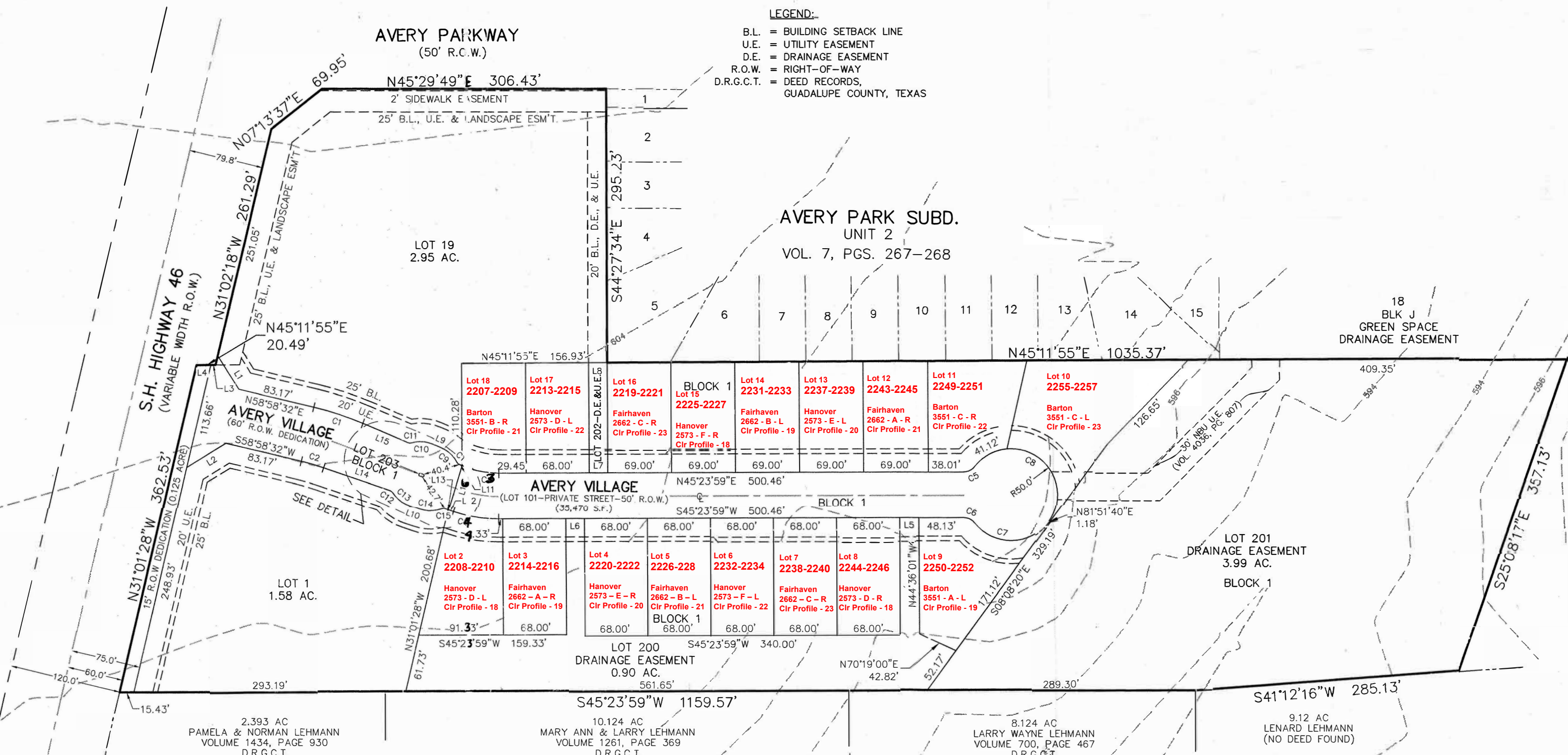


LEGEND:

- B.L. = BUILDING SETBACK LINE
- U.E. = UTILITY EASEMENT
- D.E. = DRAINAGE EASEMENT
- R.O.W. = RIGHT-OF-WAY
- D.R.G.C.T. = DEED RECORDS, GUADALUPE COUNTY, TEXAS

AVERY PARKWAY
(50' R.C.W.)

AVERY PARK SUBD.
UNIT 2
VOL. 7, PGS. 267-268



LOT 19
2.95 AC.

LOT 1
1.58 AC.

2.393 AC
PAMELA & NORMAN LEHMANN
VOLUME 1434, PAGE 930
D.R.G.C.T.

10.124 AC
MARY ANN & LARRY LEHMANN
VOLUME 1261, PAGE 369
D.R.G.C.T.

8.124 AC
LARRY WAYNE LEHMANN
VOLUME 700, PAGE 467
D.R.G.C.T.

9.12 AC
LENARD LEHMANN
(NO DEED FOUND)

Lot 18
2207-2209
Barton
3551 - B - R
Clr Profile - 21

Lot 17
2213-2215
Hanover
2573 - D - L
Clr Profile - 22

Lot 16
2219-2221
Fairhaven
2662 - C - R
Clr Profile - 23

Lot 15
2225-2227
Hanover
2573 - F - R
Clr Profile - 18

Lot 14
2231-2233
Fairhaven
2662 - B - L
Clr Profile - 19

Lot 13
2237-2239
Hanover
2573 - E - L
Clr Profile - 20

Lot 12
2243-2245
Fairhaven
2662 - A - R
Clr Profile - 21

Lot 11
2249-2251
Barton
3551 - C - R
Clr Profile - 22

Lot 10
2255-2257
Barton
3551 - C - L
Clr Profile - 23

Lot 2
2208-2210
Hanover
2573 - D - L
Clr Profile - 18

Lot 3
2214-2216
Fairhaven
2662 - A - R
Clr Profile - 19

Lot 4
2220-2222
Hanover
2573 - E - R
Clr Profile - 20

Lot 5
2226-2228
Fairhaven
2662 - B - L
Clr Profile - 21

Lot 6
2232-2234
Hanover
2573 - F - L
Clr Profile - 22

Lot 7
2238-2240
Fairhaven
2662 - C - R
Clr Profile - 23

Lot 8
2244-2246
Hanover
2573 - D - R
Clr Profile - 18

Lot 9
2250-2252
Barton
3551 - A - L
Clr Profile - 19