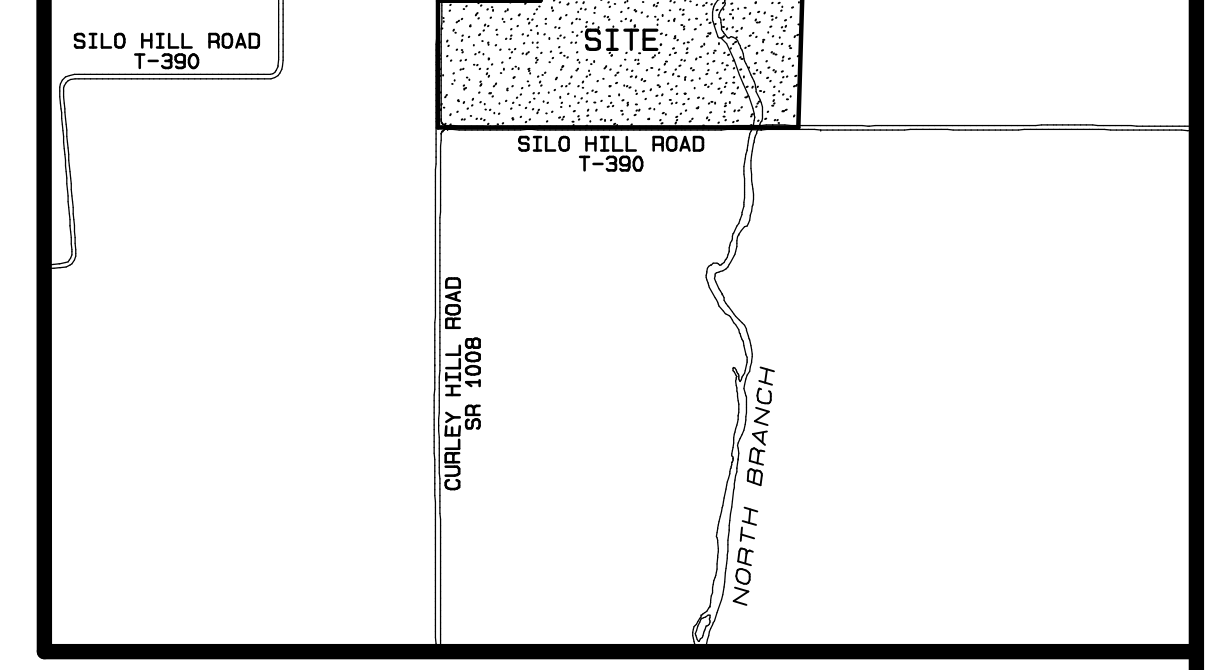


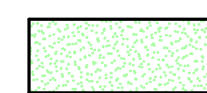
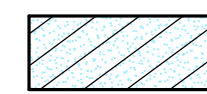
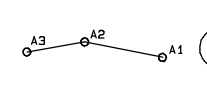
SILO HILL ROAD
T-390

CURLEY HILL ROAD
SR 1008

SILO HILL ROAD
T-390



LOCATION MAP
SCALE IN FEET 1"=600'
0 400 800 1200 1600 2000
BASED ON BUCKS COUNTY
TAX MAPPING RECORDS

- LEGEND
-  WETLANDS
 -  WATERCOURSES/WATERBODIES
 -  LOCATED FLAGS/SERIES NAME



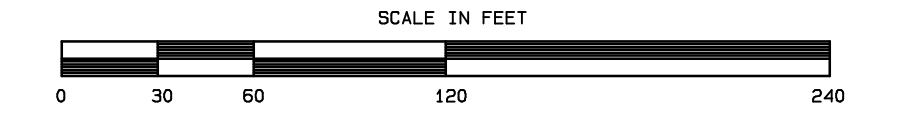
- GENERAL NOTES
- 1) BEARING BASIS FOR THE BOUNDARY RETRACEMENT SURVEY HAS BEEN REFERENCED TO NAD83 PA STATEPLANE COORDINATE SYSTEM, (SOUTH ZONE).
 - 2) BOUNDARY LINE DETERMINATION HAS BEEN REFERENCED TO "BOUNDARY RETRACEMENT PRINCIPLES AND PROCEDURES FOR PENNSYLVANIA" AS PREPARED BY KNUIT EVERETT HERMANSEN, PH.D., PLS., PE, ESQ. (COPYRIGHT 2004).
 - 3) CONTOUR DATA FROM PAMAP LIDAR PROGRAM 2006-2008, PA DEPT OF CONSERVATION AND NATURAL RESOURCES.
 - 4) DELINEATION OF WETLANDS AND WATERS BY HANOVER ENGINEERING ASSOC., INC.

TAX #34-11-45-3
26.1584 AC

PLAN OF BOUNDARY & EXISTING FEATURES FOR

OWL'S NEST PARK

PLUMSTEAD TOWNSHIP, BUCKS COUNTY, PA.
SCALE: 1"=60'
26 JUL 2012



DWN: RTD CHKD: DML APPD:
SHEET 1 OF 1 FILENAME: OWL.NEST.PRO

THIS PLAN WILL BE
CONSIDERED INVALID
UNLESS AFFIXED
WITH ORIGINAL SEAL.

DENNIS M. LITZENBERGER
PROFESSIONAL LAND SURVEYOR
128 SCHOOL DRIVE KINTNERSVILLE PA 18930 (610) 847-5108

DENNIS M. LITZENBERGER
PROF LAND SURVEYOR
PA REG #37816E