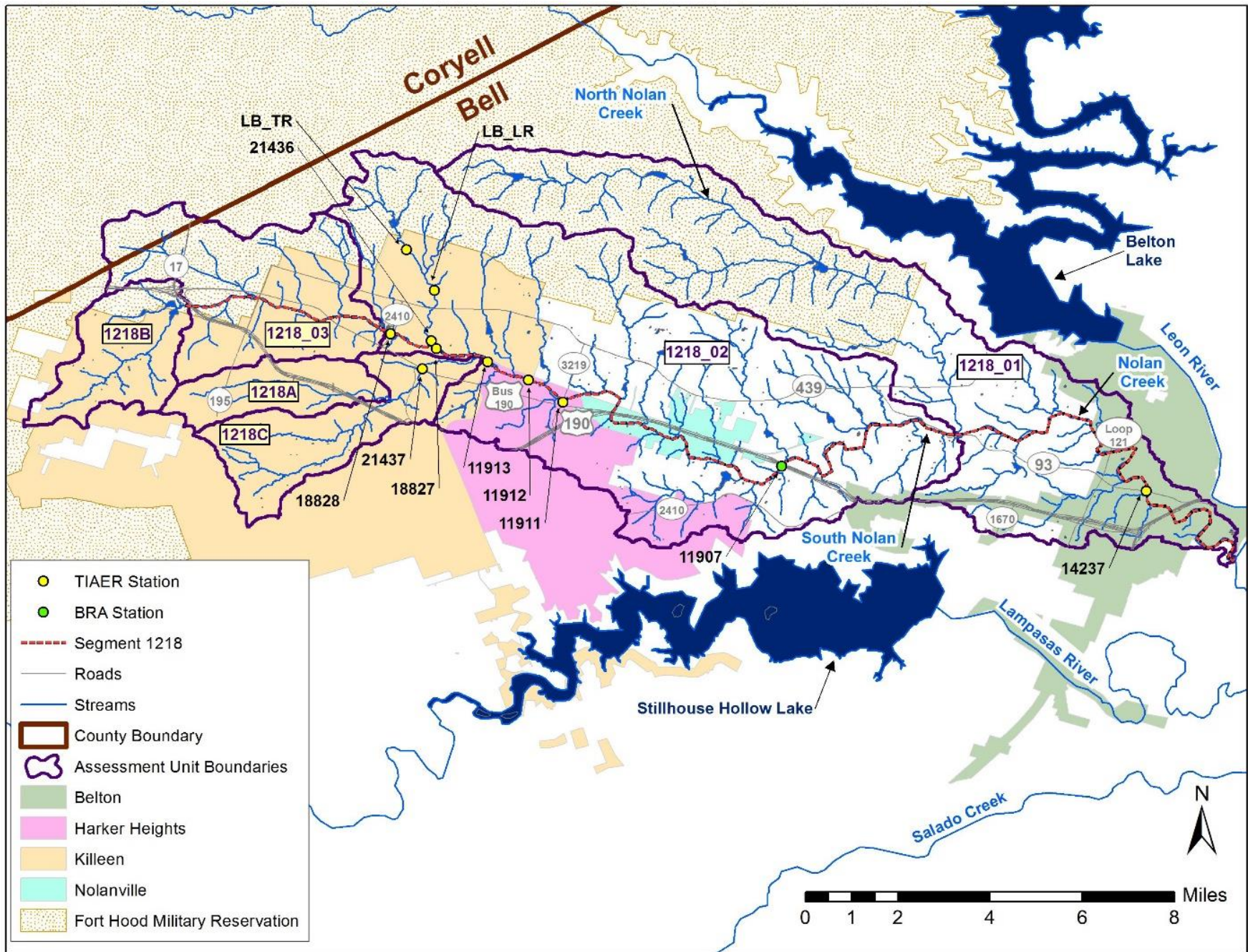


Proposed stations to be monitored by TIAER for the Nolan Creek/South Nolan Creek WPP project. Station 11907 is monitored by the BRA under the Clean Rivers Program.



Monitoring sites and selection rationale for Nolan Creek/South Nolan Creek WPP Project. Stations listed in upstream to downstream order.

| TCEQ Station or Temp. ID | Site Description | Rationale for Selection | Latitude | Longitude |
|---------------------------------|--|---|-----------------|------------------|
| 18828 | South Nolan Creek at 38 th St in Killeen | Represents most upstream location of AU 1218_02 with background concentrations generally below PCR criterion for bacteria. Located just below Bell County WCID1 Main Plant WWTF discharge. Of note, the City of Killeen opened Mickey's Dog Park just above this location in June 2015. | 31.108091 | -97.702156 |
| LB_TR | Long Branch at Tripp Trail in Killeen | Located below reservoir along upper third of Long Branch. Station added to aid in isolating sources on Long Branch. | 31.134587 | -97.697216 |
| LB_LR | Long Branch at Lake Road in Killeen | Located just above Long Branch Park in Killeen below the confluence with an unnamed tributary on Long Branch. Station added to aid in isolating sources on Long Branch. | 31.12176 | -97.688445 |
| 21436 | Long Branch just upstream of crossing of South Nolan Creek at Twin Creek Dr in Killeen | Considered a potential contributing source based on increasing concentrations noted between stations 18828 and 18827. | 31.105946 | -97.689364 |
| 18827 | South Nolan Creek at Twin Creek Dr in Killeen | Elevated bacteria concentrations indicated at this location downstream of confluence of Long Branch, a major tributary to South Nolan Creek. | 31.103470 | -97.687851 |
| 21437 | Little Nolan Creek off US 190 in Killeen | Considered a potential contributing source based to South Nolan Creek between stations 18827 and 11913. Little Nolan indicated to have elevated bacteria concentrations in the 2014 Texas Integrated Report. | 31.097143 | -97.692268 |
| 11913 | South Nolan Creek at Roy Reynolds Road in Killeen | Elevated concentrations indicated at this location on South Nolan just after confluence of Little Nolan Creek. | 31.099382 | -97.671748 |
| 11912 | South Nolan Creek at Amy Lane in Harker Heights | Located between station 11913 and 11911 where increases in bacteria are occurring. | 31.09361 | -97.6589 |
| 11911 | South Nolan Creek at FM 3219 in Harker Heights | Located below WWTF discharge associated with Harker Heights. Elevated bacteria concentrations noted between stations 11913 and 11911. | 31.086666 | -97.648056 |
| 11907 | Nolan Creek at US 190 downstream of Nolanville | Monitoring by Brazos River Authority as part of the Clean Rivers Program | 31.06656 | -97.5795 |
| 14237 | Nolan Creek at SH 93 in Belton | Within Yettie Polk Park, a recreational area in Belton. Included to complement quarterly monitoring under the Clean Rivers Program that had been occurring at station 14237 in assessing water quality within AU 1218_01. | 31.058743 | -97.464989 |

a. A TCEQ Station identification will be obtained for all sampling stations, if one is not already assigned.