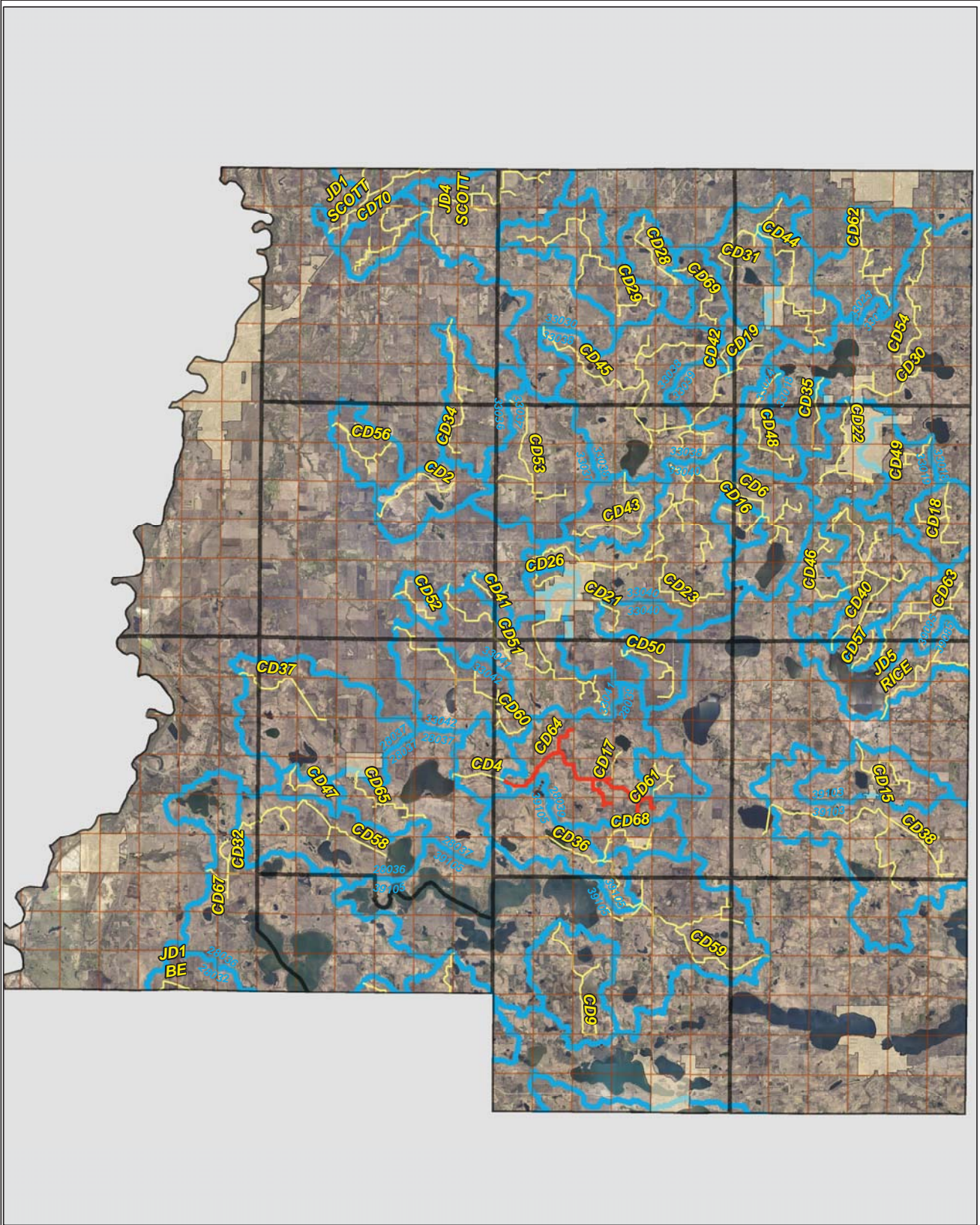


CD 64

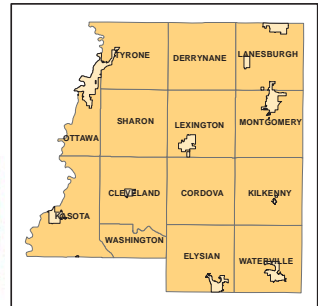


Legend

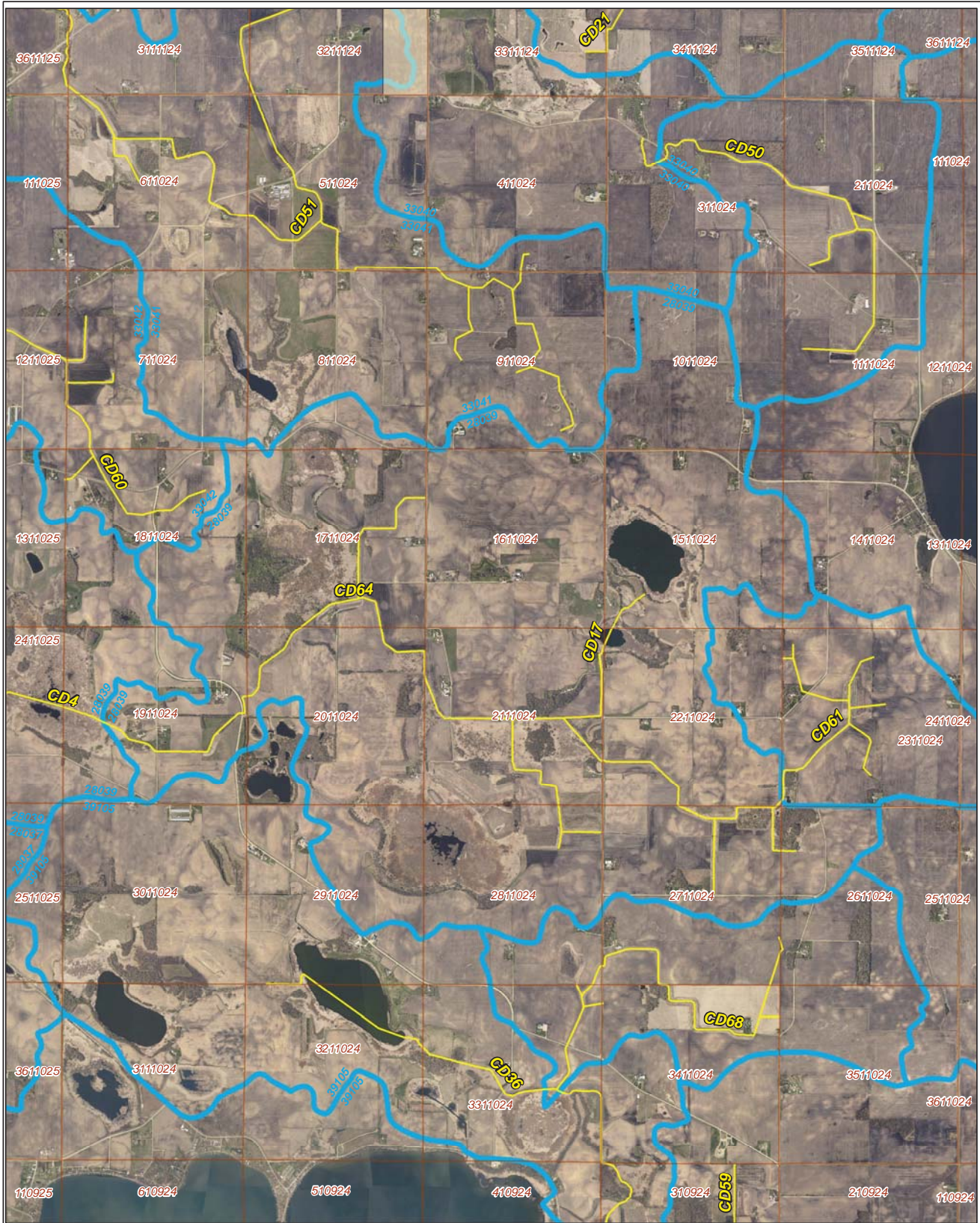
- Sections
- Cities
- Ditches**
-
-
- Ditch Watershed







N



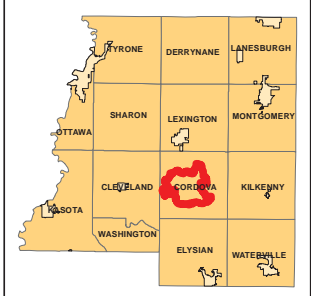
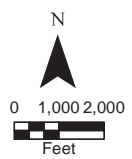
Ditch Watershed



Legend

-  Sections
-  Cities
-  Ditches
-  Ditch Watershed

Ditch ID: 28039CD64
Acres: 5871.23



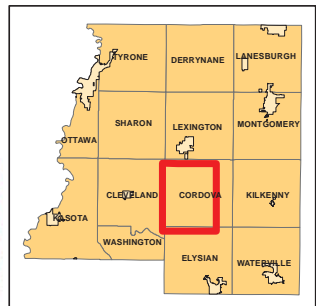
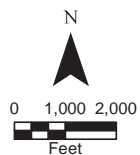
2006 Ditch Inventory



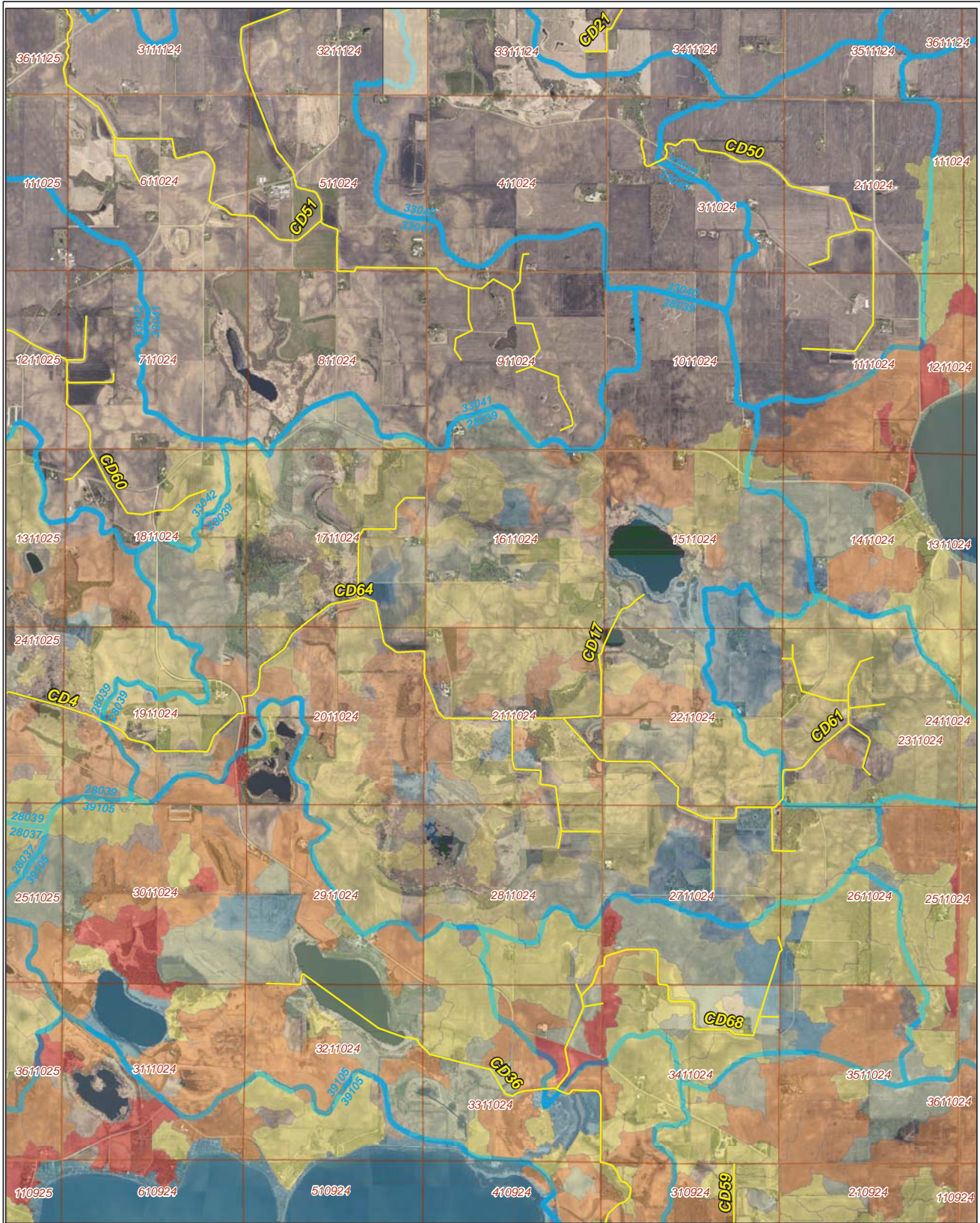
Legend

- Ditch Inventory
- Sections
- Cities
- Ditches
- Ditch Watershed

Ditch Name: CD64



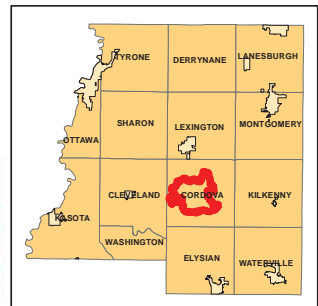
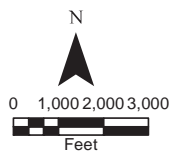
High Priority - Stream Power Index Sites



Ditch Name: CD64

Legend

Mean SPI Rank	Combined Sediment and SPI Rank	Ditches
Low	Low	Sections
Low/Moderate	Low/Moderate	Cities
Moderate	Moderate	Ditch Watershed
High/Moderate	Moderate/High	
High	High	



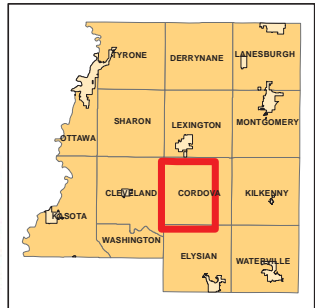
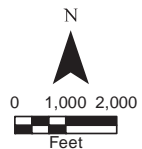
DNR Public Waters



Ditch Name: CD64

Legend

- DNR Public Lakes and Basins
- DNR Rivers and Streams
- Sections
- Cities
- Ditches
- Ditch Watershed

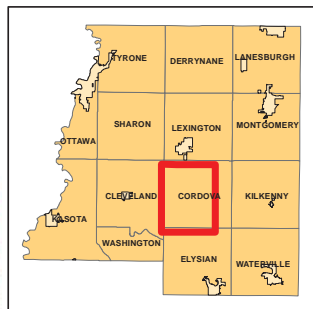
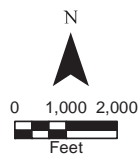


2015 Wetland Inventory

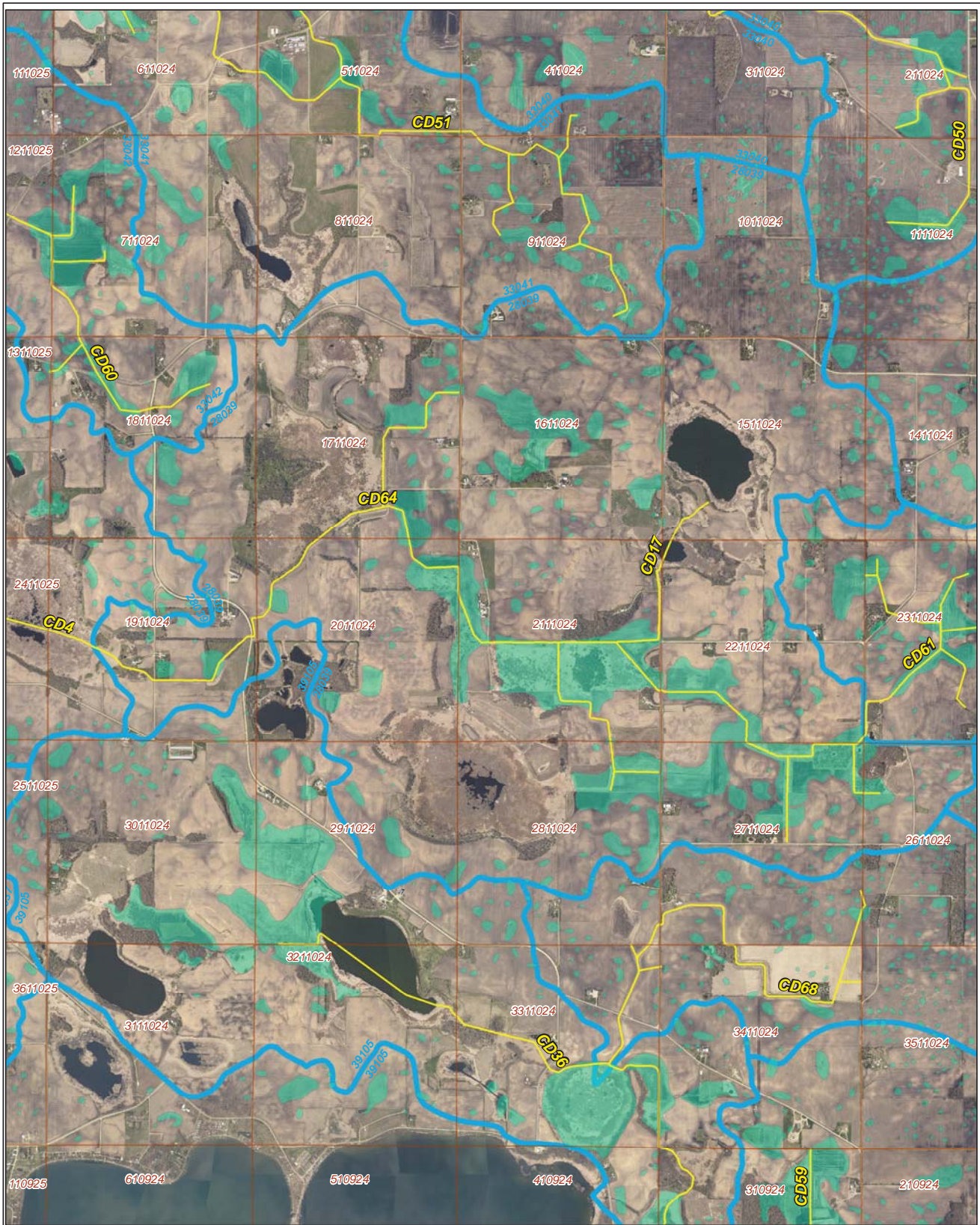


Ditch Name: CD64

Legend	
Wetland Type	
	Freshwater Emergent Wetland
	Freshwater Forested/Shrub Wetland
	Freshwater Pond
	Lake
	Riverine
	Sections
	Ditches
	Ditch Watershed



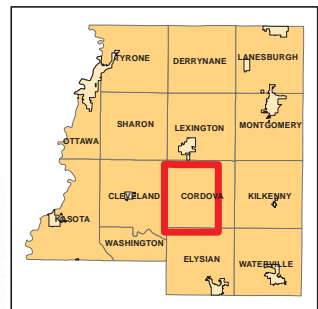
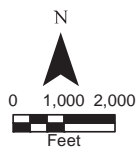
Restorable Wetlands



Ditch Name: CD64

Legend




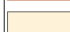
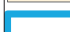
- Retention Locations
- Sections
- Cities
- Ditches
- Ditch Watershed



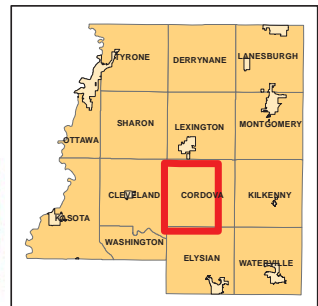
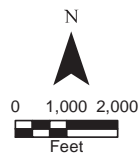
Ditch Buffer



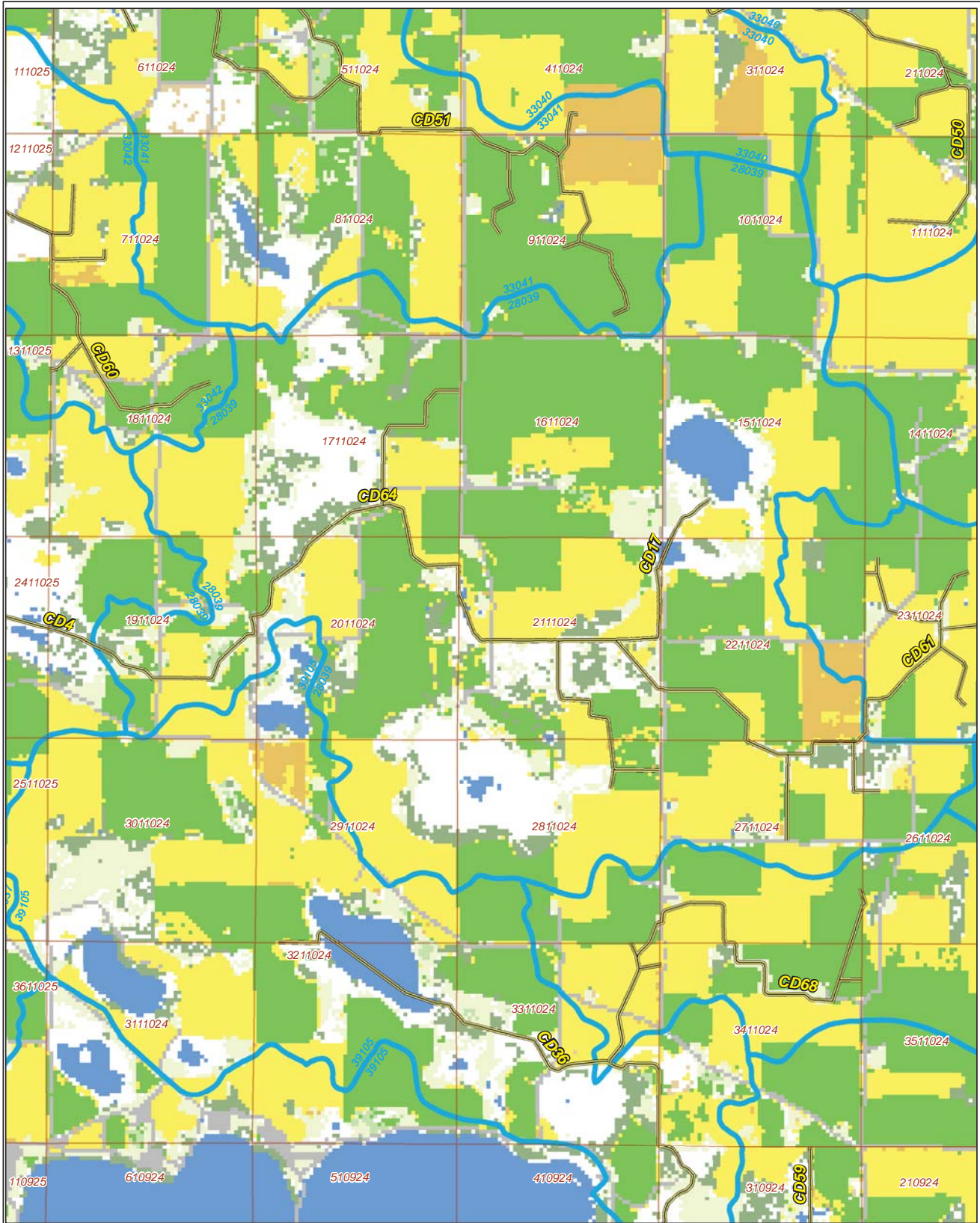
Legend

-  Ditches
-  Needs Buffer
-  Sections
-  Cities
-  Ditch Watershed

Ditch Name: CD64
Percent Buffered: 58.92%



2015 Crop Coverage



Ditch Name: CD64

Legend	
Coverage Type	
Open Water	Sections
Alfalfa	Cities
Corn	Ditches
Forest	Ditch Watershed
Developed Area	Spring Wheat
Grass/Pasture	Sweet Corn
Other Hay/Non Alfalfa	
Peas	
Soybeans	

