

# “JACK O’ LANTERNS AHEAD” HSS-08 HALLOWEEN STREET SIGN COLLECTION



CANVAS DESIGN BY KIMBERLY ANN NEEDLEPOINT  
STITCH GUIDE DESIGN & STITCHING BY KIMBERLY ANN NEEDLEPOINT  
DIAGRAMS BY KIMBERLY ANN NEEDLEPOINT

Photocopying of this stitch guide is invited.  
Production by Kimberly Ann Needlepoint.  
[WWW.KIMBERLYANNNEEDLEPOINT.COM](http://WWW.KIMBERLYANNNEEDLEPOINT.COM)

## THREAD: “JACK O’ LANTERNS AHEAD” HSS-08

<u>COMPANY</u>	<u>NAME</u>	<u>NUMBER</u>	<u>*QUANTITY</u>
KIMBERLY ANN NEEDLEPOINT	JACK O’ LANTERN’S AHEAD	HSS-08	1
RAINBOW GALLERY	PETITE SPARKLE RAYS	PS21	1
RAINBOW GALLERY	NEON RAYS	NP01	1
RAINBOW GALLERY	SILK LAME BRAID FOR 18 CT.	S125	1
RAINBOW GALLERY	NEON RAYS +	NP147	1
RAINBOW GALLERY	FYRE WERKS	F9	1
SUNDANCE BEADS	BEADS- SIZE 14	COLOR# 16	1
SUNDANCE BEADS	GREEN THREAD	COLOR#TGN	1
SUNDANCE BEADS	BEADS- SIZE 14	COLOR# 9	1
SUNDANCE BEADS	ORANGE THREAD	COLOR#TORG	1

\*Please note recommended thread is based on expected usage. Individual-stitch technique/style may vary.

<u>ADDITIONAL TOOLS NEEDED:</u>
*SIZE 20 TAPESTRY NEEDLE
*BEADING NEEDLE AND WAX
<u>RECOMMENDED TOOLS:</u>
STRETCHER BARS
BRASS TACKS
SMALL NEEDLEPOINT SCISSORS

## STITCH GUIDE: “JACK O’ LANTERNS AHEAD” HSS-08

<u>DESIGN AREA</u>	<u>THREAD</u>	<u>NUMBER</u>	<u>STRANDS</u>	<u>STITCH</u>	<u>NOTES</u>
WHITE BACKGROUND	R.G.-PETITE SPARKLE RAYS	PS21		BARGELLO PATTERN	MODIFY STITCH AROUND LETTERING AND PUMPKIN.
BLACK BORDER	R.G.- NEON RAYS	N01		DIAGONAL COUCHING	
BLUE BORDER	R.G.-SILK LAME BRAID	SLI25		TENT & DIAGONAL COUCHING	AS SEEN ON CHART.
LETTERING: “JACK O’ LANTERNS AHEAD”	R.G.-NEON RAYS +	NP147		TENT	
PUMPKIN: EYES	R.G.-NEON RAYS	N01		SLANTED GOBELIN	FILL PAINTED AREA.
PUMPKIN: BROWN STEM	R.G.- FYRE WERKS	F9		SLANTED GOBELIN	FILL PAINTED AREA.
PUMPKIN: GREEN IVY	SUNDANCE BEADS- SIZE 14 & GREEN BEADING THREAD	#16		TENT WITH BEAD	SEE LAST PAGE FOR BEADING TIPS, PROVIDED BY SUNDANCE DESIGN, INC.
PUMPKIN: ORANGE BODY	SUNDANCE BEADS- SIZE 14 & ORANGE BEADING THREAD	#9		BRICK STITCH WITH BEAD	SEE LAST PAGE FOR BEADING TIPS, PROVIDED BY SUNDANCE DESIGN, INC.

**\*\*\*SHARE YOUR STITCHING AND FOLLOW KIMBERLY ANN NEEDLEPOINT ON INSTAGRAM!\*\*\***  
**@KIMBERLYANNNEEDLEPOINT**  
**#KIMBERLYANNNEEDLEPOINT #HALLOWEENSTREETSIGNS #FREESTITCHGUIDE**

## WHITE BACKGROUND: BARGELLO PATTERN STITCH

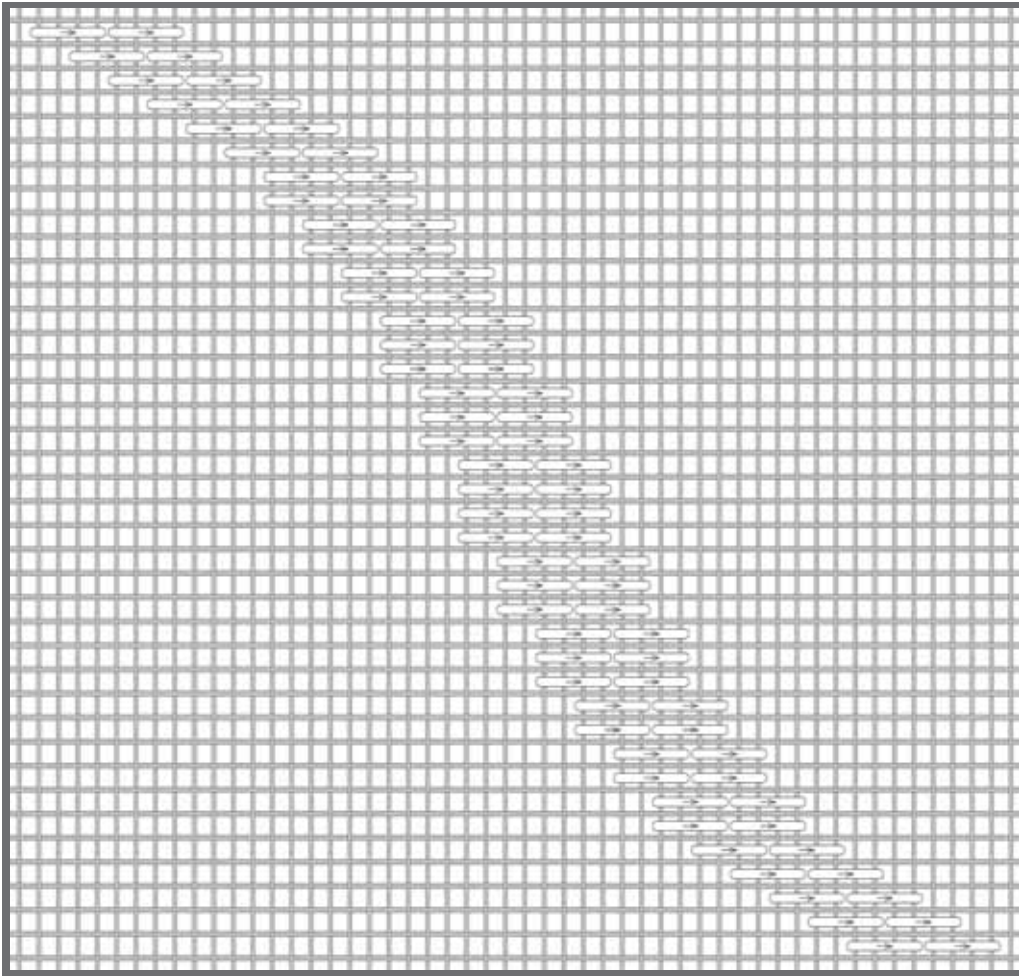


IMAGE KIMBERLY ANN NEEDLEPOINT

## BLUE BORDER: TENT AND DIAGONAL STITCHES

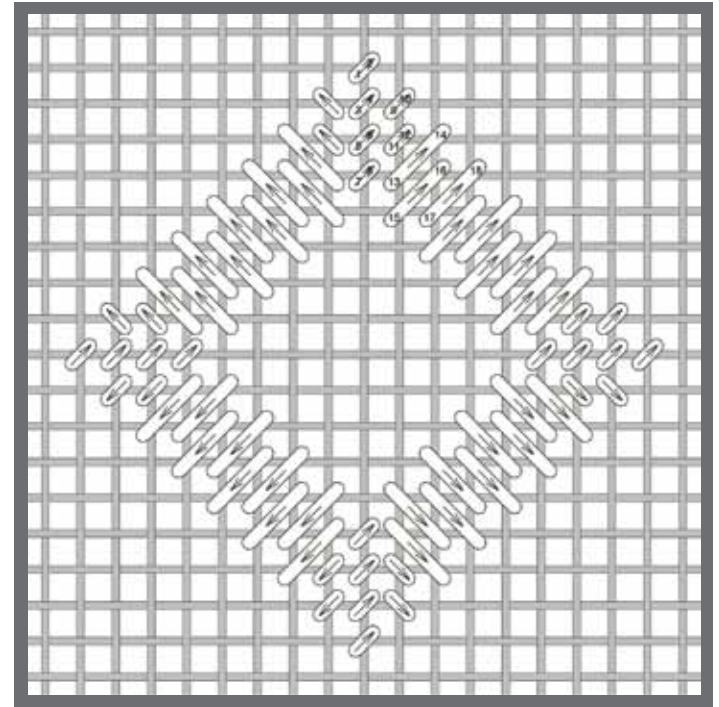


IMAGE KIMBERLY ANN NEEDLEPOINT

## BLACK BOARDER: DIAGONAL COUCHING STITCH

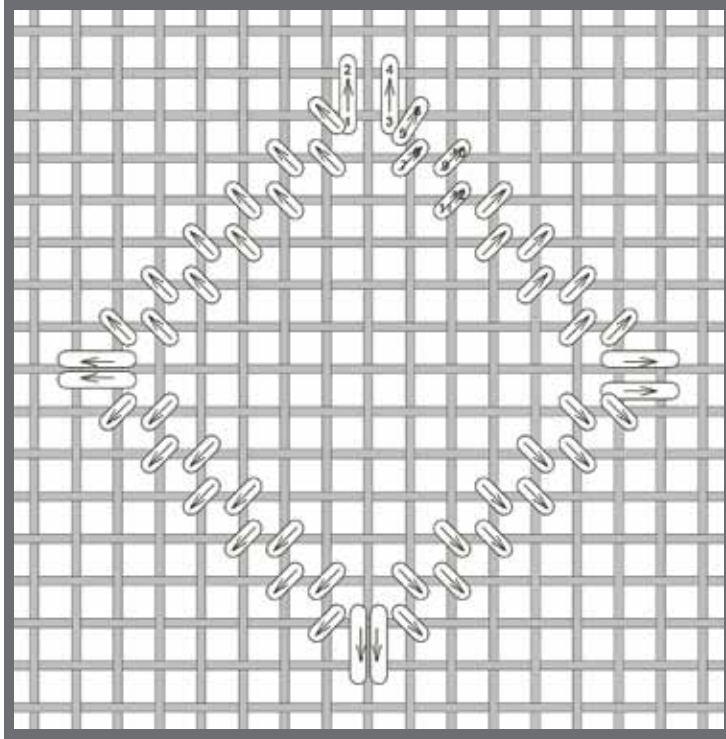


IMAGE KIMBERLY ANN NEEDLEPOINT

## LETTERING~ "JACK O' LANTERNS AHEAD": TENT STITCH

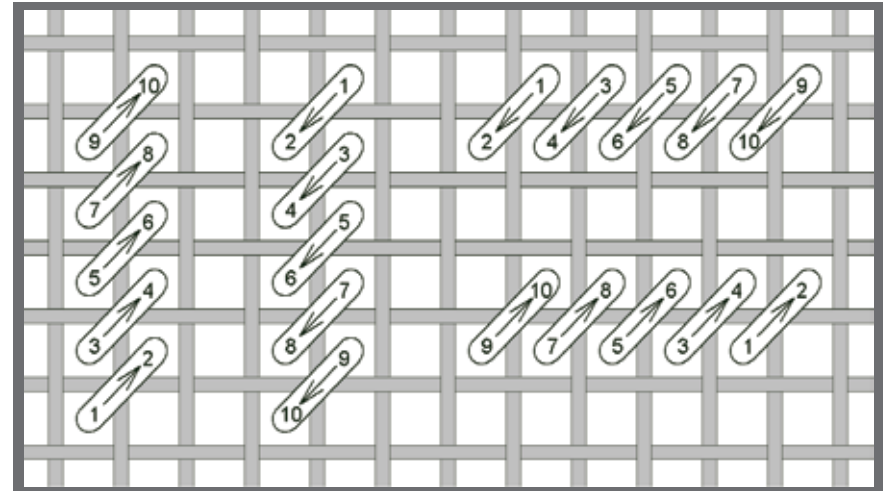


IMAGE KIMBERLY ANN NEEDLEPOINT



### PUMPKIN~ EYES AND MOUTH & STEM: SLANTED GOBELIN STITCH

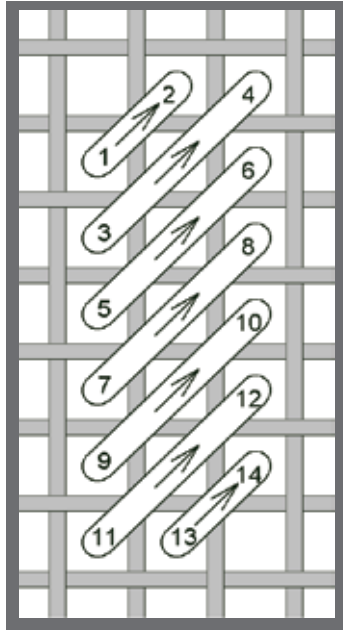


IMAGE KIMBERLY ANN NEEDLEPOINT

### PUMPKIN~ ORANGE BODY: BRICK STITCH WITH BEAD

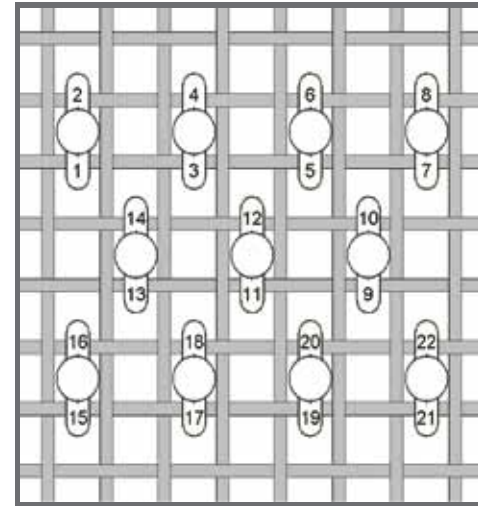


IMAGE KIMBERLY ANN NEEDLEPOINT

### PUMPKIN~ GREEN CURL: TENT WITH BEAD STITCH

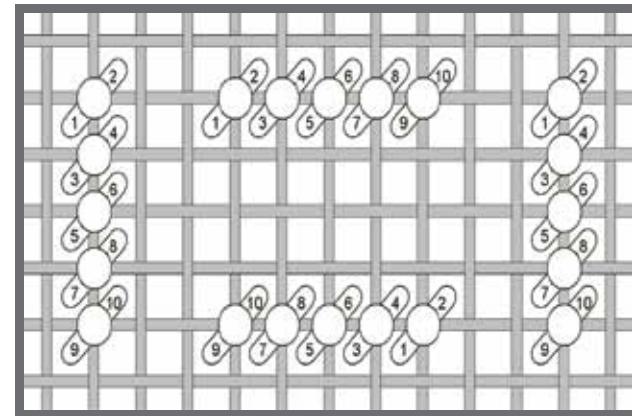


IMAGE KIMBERLY ANN NEEDLEPOINT

## IMPORTANT BEADING TIPS!

### “HOW TO & WHY KNOT!” WRITTEN & PROVIDED BY SUNDANCE DESIGN INC.

#### “NEEDLING THE THREAD:

1. First, cut a long length of the beading thread about twice what you would use normally (about 24”) as you will be doubling it over in the needle.
2. Run the thread over the cake of wax, and stretch the thread.
3. Pull one end of the thread between your thumb and index finger, just to the point where you can no longer see the thread.
4. Now put the eye of the needle between your fingers and slide it onto the thread. It should go right on the thread, if not, cut the end blunt and try again.
5. Double the thread over and tie a knot at the end.”

#### “HOLDING YOUR BEADS WHILE WORKING:

To hold the beads while working, we like to use a short strip of double sided transparent tape attached to the stretcher bar. You can pour a capful of beads onto the tape where they will be held in place for you to retrieve with your needle.”

#### “ANCHORING YOUR THREADS:

Now that you have threaded the needle and have a knot in the end of the two lengths and have your beads near by, you can start beading. If you have an area of stitching close to the area where you intend to bead, you can simply run the beading thread under your previous stitching leaving the knot on the back of your stitching.”

#### LASSOING TECHNIQUE:

“To guarantee a secure bead attachment, you may want to use this technique of Lassoing your bead.

Step 1- Come up from the back of the canvas, add the bead, cross the canvas intersection and go down to the back of your canvas.

Step 2- Come up again through the same canvas hole, separate the two strands of the beading thread and place one thread on each side of the bead. (Do not go back through the bead hole). Go back down through the canvas hole. This will add an extra stitch to keep your bead snugly in place.”

