

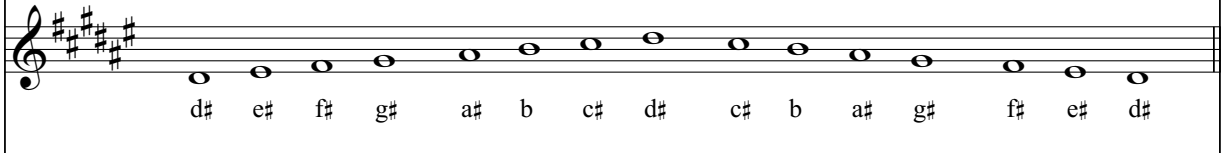
d# minor

relative major: F# +

key signature: f# c# g# d# a# e#

d# minor natural

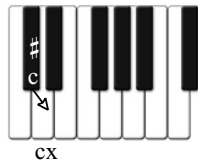
The natural minor simply borrows the key signature of it's relative, F# major.



d# minor harmonic

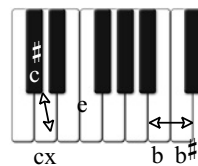
The 7th note is raised a half step ascending and descending the scale.

The 7th note is c# and is raised to cx
(c double sharp or c augmented) creating the leading note.



d# minor melodic

The 6th and 7th notes are raised a half step ascending the scale and lowered a half step descending the scale.



Ascending the scale the 6th note is b and is raised to b#.



The *Overture* to Handel's *Messiah* is written in the key of *e minor*.

For instruction purposes, the excerpt has been transposed to the key of *d# minor*.

Note the *cx* leading note and *b#* accidental from the *melodic* minor in the score.

G. F. HANDEL
Messiah
PART I: CHRISTMAS SECTION
1. Overture

