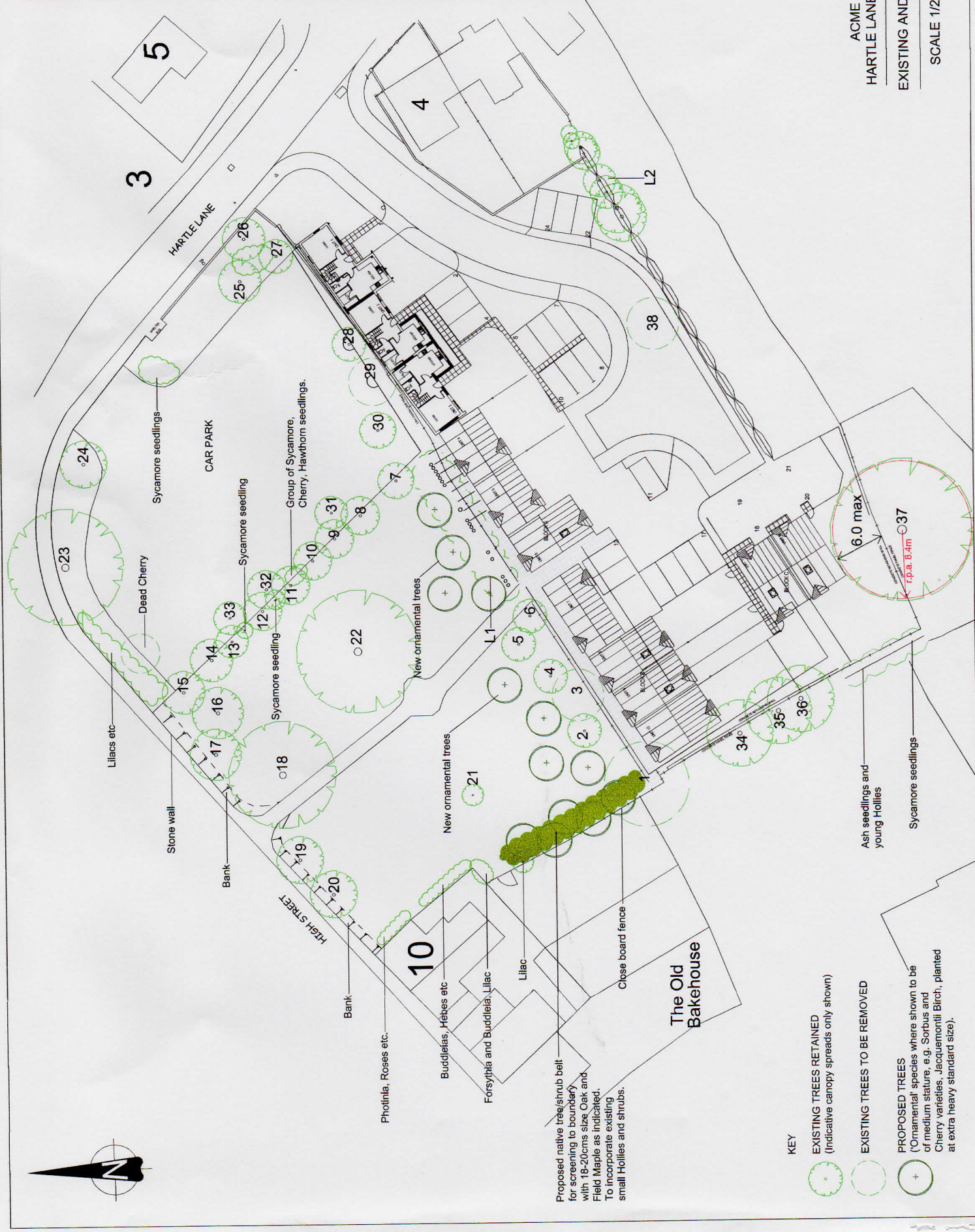


**SCHEDULE OF EXISTING TREES**

1. Pioneer young birch, possibly hedge row tree. Considered for removal. For site to be developed. REMOVE.
2. Young Cherry - 8.10 dia. 1.5 m p.a.
3. Young Blue Alder Cedar - Tree close to development. REMOVE.
4. Early mature Cherry - 0.10 dia. 1.2 m p.a. Worsening condition. Consider removal. REMOVE.
5. Early mature Cherry - 0.12 dia. 1.44 m p.a.
6. Early Mature Maple - 0.15 dia. 1.8 m p.a.
7. Mature Cypress - Diameter at 1.5 m 0.55 base. 4.2 m p.a.
8. Multi-trunk mature Cypress - 0.9 base. 2.0 m p.a.
9. Early mature Sycamore.
10. Mature mulberry tree.
11. . . . .
12. . . . .
13. Young Birch.
14. Mature mulberry tree.
15. . . . .
16. Mature Cherry.
17. Mature Weeping Birch.
18. Large, late mature Cherry.
19. Early mature Sycamore.
20. Mature 'Green column'.
21. Mature Cherry sapling.
22. Large, broad spreading, mature Oak.
23. Mature Sycamore.
24. Mature oak Hawthorn.
25. Early mature Sycamore - 0.30 dia.
26. Cherry (in shelter).
27. Mature Hawthorn - 0.52 dia.
28. Prunus variety - 0.15 dia.
29. Dead Cherry - REMOVE.
30. Young Ash-leaved Oak Willow.
31. Mature Ash variety.
32. Early mature Sycamore.
33. Mature Ash variety.
34. . . . .
35. . . . .
36. Mature Sycamore (possibly specimen from car dump) - 0.10 dia. 1.2 m p.a. Worsening condition. Consider removal. REMOVE.
37. Large, broad, late mature Sycamore. On adjoining land. Treatment dia = 0.70. Maximum 8.4 m p.a.
38. Apple - affected by development. REMOVE.
39. . . . .
40. . . . .
41. Hedge of 400 year old trees close to development. REMOVE.
42. Line of Cypress, young Sycamore, hazelnut etc. (NOTE: root protection area (r.p.a.) are shown only for trees due to the development)



ACME JEWELLERY  
 HARTLE LANE, BELBROUGHTON  
 EXISTING AND PROPOSED TREES  
 SCALE 1/200 ALS.FEB 2011

- KEY**
- EXISTING TREES RETAINED (Indicative canopy spreads only shown)
  - EXISTING TREES TO BE REMOVED
  - PROPOSED TREES (Ornamental species where shown to be of medium stature, e.g. Sorbus and Cherry varieties, Jacquemontii Birch, planted at extra heavy standard size)

Proposed native tree/shrub belt for screening to boundary with 18-20cm size Oak and Field Maple as indicated. To incorporate existing small Hollies and shrubs.