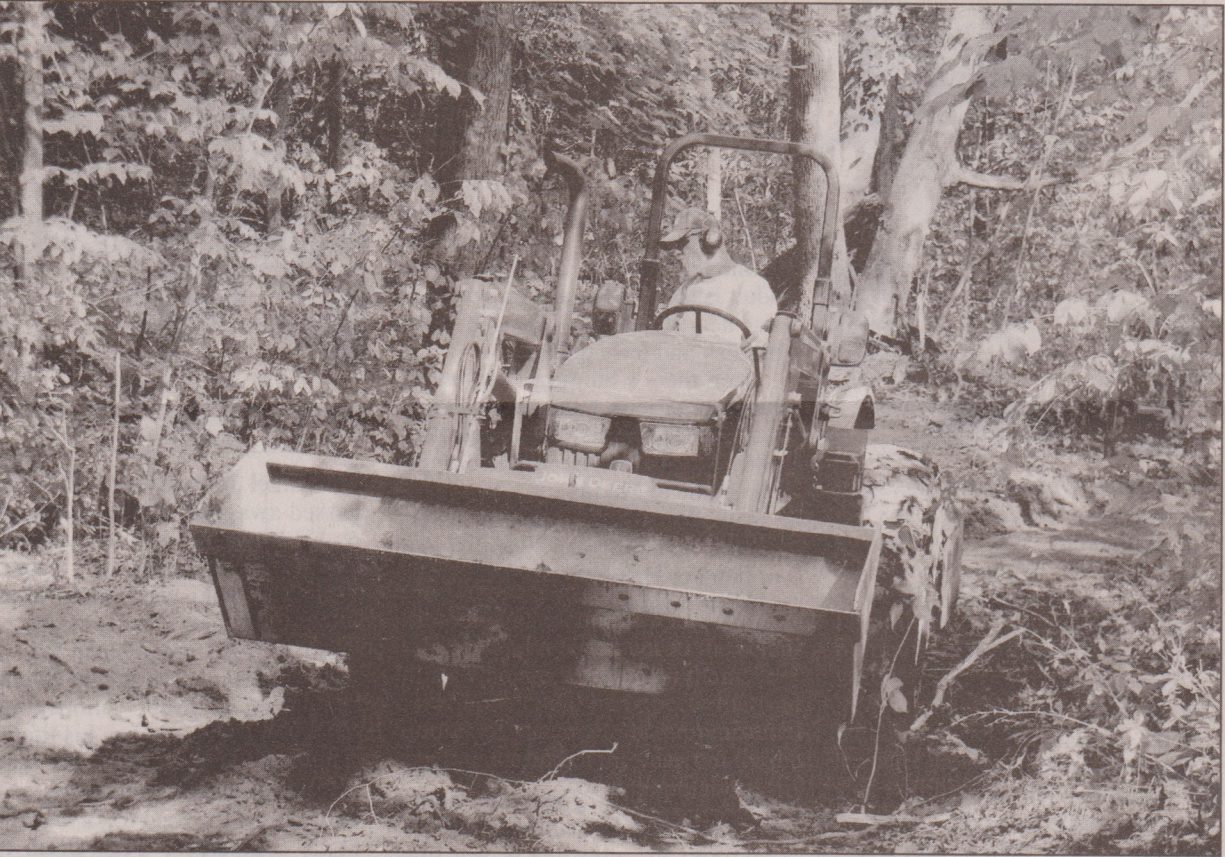


## Trail repairs take place at Governor Dodge



Long-time park maintenance worker Ray Evans works to repair a badly eroded hill located on the 15 mile Driftless Trail at Governor Dodge State Park. Ray's tractor skills have proven invaluable in correcting erosion and eliminating chronic mud holes on several multi-use trails at the park. This work was made possible by a matching grant obtained by the Friends of Governor Dodge State Park from the Wisconsin State Horse Council Trails committee.