

ESTATE AUCTION

Located at 1672-125th St., Marengo, IA which is 4 miles West of Marengo on 212th St, then 2 miles North on H Ave/125th St

SALVAGE YARD – SKID LOADER – SHOP EQUIPMENT

Saturday–April 15, 2017-9:00am



CHEVY 2500 - GMC SIERRA 1500 & FORD PICKUPS - TRAILERS:

2003 Chevy Silverado 2500, HD Duramax Diesel, 4WD, crew cab w/139,294 miles, maroon in color; 2002 GMC Sierra SLE 1500 HD, 4WD, 194,566 miles, black in color; '83 Ford F-250, 2WD, 6.9L Diesel, 4 spd utility truck w/125,036 miles & Contractors Knapheide tool box, blue in color; '96 Chevy Silverado 2500, Diesel, 4WD, 6.5L-V8, 5 spd, Club cab truck w/5th wheel hitch & 8' Western snow plow, dark blue in color; '79 Ford F-150, 4WD, 460-V8 – in process of being

restored; Kobalt aluminium tool box; Assorted pickup & truck tires; 2010-14' Load GN dump box trailer w/ 2' extensions, tandem axle & roll tarp; 20' GN tandem axle flatbed trailer; 22' Red GN flatbed triple axle trailer w/ 4' beaver tail & winch; 16' GN homemade tilt bed, tandem axle trailer; 16' BH flatbed trailer w/ winch; 16' flatbed 2 wheel trailer w/ 2" floor; 9' Western front mt snow plow



TRACTORS – CAT SKID LOADER – MICHIGAN ENDLOADER:

MF 1105 w/C&A, 3759 hrs, 18.4-34; MF 175D, w/ w/ MF loader w/ hyd bucket; Cat 287C, two spd, skid loader on tracks w/ 3888 hrs & dirt bucket; Mustang 440 gas skid loader; Michigan 35GM-AWS endloader w/ grapple forks; 78" Cat 217-6229 skid loader grapple fork; 6' Cat BR172 skid loader brush mower; Cat skid loader post hole digger attachment w/ 8" & 12" augers; Lackender grapple bucket & tree shear; 8' Berlon snow bucket; Assorted Pallet forks; Scaffolding basket; 10' Blizzard skid loader blade w/ hyd swivel; 5½' gray skid loader brush mower; Chains for endloader; Bumper hitch tandem axle skid loader trailer; 3 pt center link



splitter w/ 5 hp-220 volt electric motor; 2-500gal diesel barrels w/ pumps; Pickup fuel tank w/ electric pump; HD trailer ramps; 34-19½"x7½ metal frames-2x4 tube; 5-17½"x7½ metal frames – tube2x4; 7 hole SS finish feeder; 180-6x6x6 pieces of fir; 2-42" Breese Port barn fans; Steel posts; Electric fence supplies; 19" Dayton exhaust fan

46 SALVAGE VEHICLES – METAL CRUSHER – IRON PILES – SCRAP: The salvage vehicles are assorted cars, pickups, vans & SUV's w/many of them full of scrap; Hyd homemade 2½"x5' metal crusher; 30+ 3x3½' metal baskets full of scrap; 10+ pieces of farm equipment to be sold as scrap; Pallets of scrap metal; Iron piles



FARM EQUIPMENT: 24' AC field cultivator; 21' JD manual fold disc; 13' Krause disc; 6' Keen Kutter 3 pt scavenger box blade; 5' & 7' Woods 3 pt rotary mowers; JD 2350-2450 on-land 6 bott plow; 8"x71" Westfield auger; 8' pull type disc; 40' RR car storage container; 3 pt sub soiler; AC 2000 5 bottom plow; IH 5 & MF 5 bottom semi mtd plows; AC pull type 4 bottom slat bottom plow; IH 4 bottom plow; IH 11 wheel disc; Cultipacker sections; 3 pt bale mover; 10 older manure spreader framed wagons; 35"x84" drive over grate; Portable hyd log splitter w/ 5 hp-220 volt electric motor; 2-500gal diesel barrels w/ pumps; Pickup fuel tank w/ electric pump; HD trailer ramps; 34-19½"x7½ metal frames-2x4 tube; 5-17½"x7½ metal frames – tube2x4; 7 hole SS finish feeder; 180-6x6x6 pieces of fir; 2-42" Breese Port barn fans; Steel posts; Electric fence supplies; 19" Dayton exhaust fan



POLARIS RANGER & 4 WHEELER – CUB CADET TANK LZ

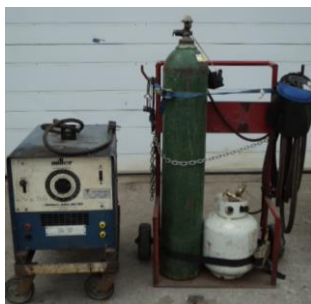
COMMERCIAL MOWER – CHAIN SAWS: 2008 Polaris Ranger XP 700 w/ cab & 991 hrs; Polaris 500 Sportsman 4x4 4 wheeler-green; 4 wheeler

seed attachment; ATV 15 gal spray tank w/ electric pump; Large charcoal grill on bumper hitch trailer; Cub Cadet Tank LZ commercial zero turn mower w/ 60" deck & 229 hrs; 3x6 lawn trailer; 2-4' lawn rollers; 53"-3pt red garden tiller w/ trailing wheels; 4' Handi pull type lawn sprayer; JD 38" lawn sweep; MTD 4 cycle week trimmer w/ roto tiller attachment; 22" Brute self-propelled push mower w/ 6.75 Briggs; Deer stand; **Chain Saws:** Husqvarna w/18" & 20" bars, Stihl 045 w/ 24" bar & 031, Poulan 295 Pro & 4218, Homelite XL, Ryobi electric w/ 18" bar, Remington electric w/16" bar; Chicago chain saw grinder/ sharpener; Gardner electric bug lights



SHOP TOOLS & EQUIPMENT:

Corchi A9218t.l. air tire machine; Carolina HD 10 metal horizontal band saw; 20T hyd press; 20T hyd press (bench top); Central pneumatic 30 gal 1800 psi, 14 hp gas powered stationary air compressor; Stationary 2 stage-5 hp air compressor w/ 80 gal tank; Jib crane w/2T hoist; Chicago 440lb ele. hoist; Hyd transmission jack; 30' ext ladder; Systematic CV-DC Model MP175 electric arc wire welder; Miller 250 AC-DC electric welder; Central Pneumatic 12 volt air compressor; Cutting torch complete w/ gauges/ tanks & cart; Hobart Airforce 250ci plasma cutter w/ built in air compressor w/ cart; B&D Industrial chop saw w/ table; Craftsman radial arm saw; Schauer & other battery chargers; 10" Craftsman table saw; Roto Brute RB32 Series magnetic drill press; OLT 12 spd 5/8" drill press; 10T porta-power; 8" Jet & Delta ½hp bench grinders; 5T floor jack; 2½"x4' welding table w/ 5" vise; Welding table; 4L200 liq oxy tank (160L); 2 Oxy cyl tanks; Cutting torch hose w/reel; Partner K700 gas powered cut-off saw; HD 15" cut-off saw; Craftsman 32 cc power blower; DeWalt DW304 reciprocating saw; Chicago power tools; Porter Cable battery operated hand tools; Rockford 106 air impact; ½" air impacts; ¾" electric impact; 2-DeWalt battery ½" impacts; DeWalt Saws-all & drill; Milwaukee HD sawzall; Milwaukee slide hammer; CH air nailer; Air chisel; Ryobi drywall screwdriver; Alemite battery grease gun; Kobalt 38 piece tool set; Craftsman, Pittsburgh, Standard & metric wrench sets; Metric & Dayton combination wrenches; Line wrenches; Chrome Vanadium ¾" impact sockets; Craftsman ½" deep sockets; Talon ½" socket set; ¼, 3/8, ½ & ¾" socket sets; Allen wrenches; Hex head wrenches; Skil circular saws; Electric side cutters; Central Tool chain break; 48" pipe wrench; Chain breaker; Tile crumber; Many hammers & pipe wrenches; Torque wrenches; Screwdrivers; Mauls; Axes; 2-8" vises; Soldering tools; Files; Log chains; Snap ring pliers; Punches; Chisels; Assorted 100# LP cylinders; 16 hp Briggs gas engine; Older HD ½" drills; Welding & C clamps; Pry bars; Handyman & Imp jacks; Tow straps; Chain binders & chains; Come-along; HD log tong; Leather punches; Parts washer; Ring compressors; Manuel tire spreader; Bolt cutters; Tap/die sets; Drill bits; Jack stands; Crescent wrenches; Car Quest portable air tank & creeper; 18'-5 tier metal storage rack; Metal storage rack on casters; Large assortment of H beams, angle iron, tubing, pipe, etc; Proto, Homak & Craftsman tool boxes; 4'x5' SS top workbench; 81 hole – 10' wooden parts bin; 40 hole wooden parts bin; 15 hole steel parts bin; HD metal shelving; Lawson/ Kar Products bolt, pin/washer cabinets; Bolt bins; Assorted metal shop cabinets; Metal tire rack on casters; Electrical wire rack; Metal parts bins & saw horses; Air bumper jack; Welding helmets & supplies; 7' alum. ladder; Step ladders; Set of Cattle branding irons; Dickey John grain tester; Wheel barrow; Heavy duty metal 3 step stool; Post hole digger; Garden rakes; Spades; Shovels; Forks; Brooms; Gas cans; Halogen shop light on stand; Nails/ screws; Assorted portable tool boxes; Stackable chairs; Many 50 gal barrels; Porta 40 kerosene heater



PRIMITIVES: 100lb Anvil w/ HD iron base; Decorative imp steel wheels; Buzz saw; 1R Stalk chopper; 2 bottom pull plows; JD 2R-3pt planter; Hay loader; Platform scales; Cast iron WS Dickey Clay Mfg. Co-Kansas City plate; Barn lanterns; Loose hay forks & knives; Assorted live traps; Cane & other fishing poles; Sleds; Jump traps; Turkey decoys; Garden push planter; Well pump handles; Grover Products Truck horn; Dehorner; 2 Moline planter lids; 15,000-12 gauge Winchester double A wads; White flyer AA clay pigeons; Minnow buckets; Occo Dari-Pail udder wash buckets; Picks; 2 JD planter box lids; Ney hay carrier; 2 Badger advertising signs; Lite purple lightning rod balls; Corn knives; 9" anvil; Giant nail puller; Hay knife; Hatchets; Wood levels; Stanley 45 wood plane; Small steel wheel; Calf weaner; Ear notcher; Gas blow torch; Scythes; Silage forks; Hay fork; Dain wrench; Wood pulleys; Seining net; Chicken wire; Regent Model 91 regulation size coin operated pool table; Pool cues; Cue cabinet; Seeburg coin operated multi-channel juke box machine; Wooden gun cabinet; Small upright metal gun cabinet; Miller High Life beer clock; Old Style beer sign; Fisher Price game table; Camping lanterns; Muskrat stretcher, Hedstrom child's horse spring rocker



APPLIANCES – MEAT SAW & SLICER: Amana upright 13 cu ft freezer; Tappan Series 110 gas range; Wonderwood Model 2941 wood burning heating stove-excellent condition; Jim Vaughn 220 volt meat band saw; Globe electric meat slicer; 8' wooden table w/ formica top; Paper unroller; Assorted meat hooks; Hand meat saws; Sunbeam Grill Master gas grill

ORDER OF SALE: Hayrack items & hand tools. 11am- Appliances, meat saw/ slicer & collectibles. 12:30pm Pickups, Ranger, 4 wheeler, skid loader, tractors, trailers & farm equip. Ending the auction w/Salvage vehicles, metal crusher & scrap iron. Come prepared as we will run 2 rings throughout the day. All announcements day of auction take precedence over all other advertising.

OPEN HOUSE VIEWING: Thursday-April 13th, 3-6:30pm

BILL PARSON ESTATE: Owner Web: duwasauction.com Terms: Cash or ck w/ID

Auctioneers: **Dwight Duwa 319-646-6775 Jeff Wille** Lunch-Liberty Hill Catering Not responsible for accidents or theft

