



Above is a gravestone in the UP or Wee White Kirk Cemetery in the Township of Buffalo. It marks the grave of George Galloway, nephew of John Muir. At present, the finial on the top has broken off and needs to be repaired and replaced. It's an example of work that is needed to preserve the historic burial places in Marquette County. This cemetery is an "orphan" cemetery that falls under the purview of the Town since it no longer has an active cemetery association.

descendants of those buried at the cemeteries so that all respect is shown for those buried there and their families.

If you are interested in volunteering with the Friends of Marquette County Cemeteries sponsored by the Marquette County Historical Society, please come to our next meeting at the Marquette County Historical Society on January 18 at 1 PM at the Marquette County Historical Society in Westfield. We will be reviewing the information available in the historical society's archives and lay out a plan for touring cemeteries in Marquette County. Our goal is to reset at least some gravestones in some cemeteries. For more information email Kathleen McGwin at mcgwin@frontier.com.

Friends of Marquette County Cemeteries group forms

The Marquette County Historical Society has formed a Friends of Marquette County Cemeteries Group that met for the first time in November. New members are welcomed. The goal is to make sure all the records are up to date at the historical society and to help preserve historic cemeteries that no longer have active cemetery associations. MCHS is looking for volunteers interested in joining this effort.

At the first meeting, ten volunteers participated in a Wisconsin Historical Society webinar entitled Resetting Stone Grave Markers. Then a discussion took place about the many ways the group can help preserve cemeteries. We also reviewed the information at Find-a-Grave, a wonderful, free website that lists cemeteries and burials. This site is not complete, but is a wonderful record of most cemeteries and interments. Work is needed to help bring information together and up to date in Marquette County so that there is a central data base for people's use.

MCHS has over 17,000 obituaries on file. Bette Krueger, the Register of Deeds, dropped off some information for the group that is housed in her office in the courthouse. The group wishes to make a record of what is housed where around the county and plot locations of all the cemeteries.

Some of the goals of the friends group will be to familiarize its members with the locations of Marquette County cemeteries, learn which cemeteries are "orphan" cemeteries with no active association or owner, set a plan for updating information about the cemeteries, schedule visits to some of the cemeteries over 2017, and develop a plan for restoring some of the historic headstones that need repair. The friends will work closely with Towns, past associations, present owners/associations and



Above are gravestones at another early cemetery in Marquette County. Soon, without preservation work, they will disappear under the grass and earth. The new friends group hopes to prevent this from happening.

Hero of History Mary Jean Thalacker

Vice President of the Marquette County Historical Society (MCHS) Ed Thalacker presented the Hero of History award to Mary Jean Thalacker last week at the organization's annual meeting. Thalacker has been helping preserve the history of Marquette County for years. She worked on the books *A Historical Stroll through Marquette County Churches* as well as the *History of Harrisville*. Most recently, she helped develop the new Marquette County quilt exhibit at the historical society which features a revolving display of quilts from her extensive personal collection. Mary Jean has always stepped forward to help when a history project is in the works. Her knowledge has contributed often to collections of history, books, and exhibits about Marquette County. She will also be assisting in the second edition of the book *Patching Together History with Marquette County Quilts* which will be available by the Strawberry Sociable in June. MCHS presents this award annually. Previous awardees were Fran Sprain, Esther Brancel, Clint Kolpin, Pat and Neil Kruger and Gene Yates.



Second Edition of Patching Together History with Marquette County Quilts

In 2009, the Montello Historic Preservation Society held the Patching Together History vintage Marquette County quilt show in Montello. In conjunction with the show, MHPS published the book *Patching Together History with Marquette County Quilts*. MHPS has given permission for the Marquette County Historical Society to develop and publish a second edition of this book with added information and more Marquette County quilts. There are only a few copies of the first edition available at MCHS, MHPS or Reader's Realm Bookstore in Montello. The second edition will be out by the June, 2017 Strawberry Sociable. All sales of the second edition help support MCHS.

Part of the book features Mary Jean Thalacker's quilt collection. Her collection started when her grandmother gave her the family quilts and related the stories about each one. Mary Jean then started collecting quilts and their stories from throughout Marquette County. Now you can add your own vintage Marquette County quilt to this second edition or update information on a quilt already in the book.

TAKE NOTE if you want a vintage quilt connected to Marquette County included in this book, the vintage quilt must have direct ties to Marquette County. It may have been made here or brought here by a settler family, for instance. We will photograph, scan pictures, and gather stories about your quilt at the MCHS Kerst Building on two Saturdays this winter. In addition we may ask permission to use your quilt in displays at the MCHS "Strawberry Sociable", Spring of 2017 or at the County Fair booth in July of 2017.. There will be two days where you can bring a quilt to include in this book. Here is the criteria:

The quilt must be a vintage quilt connected to Marquette County. By bringing it to one of the quilt days you are agreeing to have a photo taken of the quilt and giving permission for MCHS to include it in the book. Please bring any photos associated with the quilt. They will be scanned and may be used in the book. For example, a photo of the quilter greatly enhances the story of the quilt. You will be able to take your photo home with you that day. You can also fill out the form below and email a copy of the photo and the filled out form to Kathleen McGwin at mcgwin@frontier.com. The photo must be high quality of at least 300 DPI. It may be black and white or color. Submitting the form/photos and bringing the quilt to one of the two quilt days does not guarantee you a place in the book. MCHS retains the right to accept or deny use of any of the quilts if they don't meet criteria or if there is not adequate space in the book.

We will photograph, scan pictures, and gather stories about your quilt at the MCHS Kerst Building on Saturday, January 21st 10 am to 1pm and Sunday, January 29th from 1:00 pm to 4:00 pm.

Marquette County Quilts – Marquette County Historical Society Quilt Book

Name of person submitting quilt:

Address

Phone **and email** of submitter of quilt _____

Name of quilt: _____ Date of quilt: _____

Name/s quilter: _____

Home town of quilter in Marquette County and/or the home where the quilt now resides: _____

Story of quilt: (use additional pages as needed)

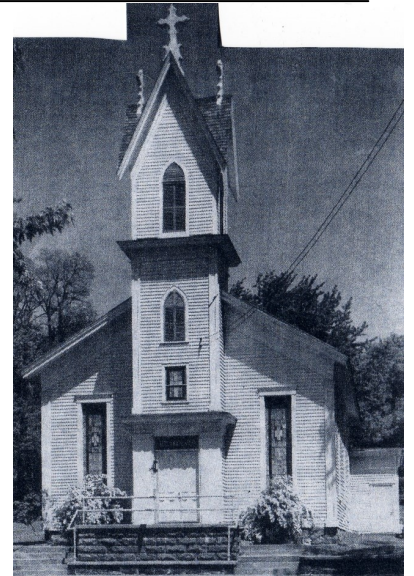
Please include things like:

Fabric used in quilt. Batting used if unusual. Where it was found if it was rescued. Family Photos: We would especially like photos of quilter & family, family homestead, , or other quilt related photos. Favorite family quilting stories about the quilt or quilter: from whom it was handed down, events when it was used, why it was a favorite, how it is now used etc. Paragraph about the life of the person named above. Paragraph by a living relative about the person named above, if deceased. Submit all by email to mcgwin@frontier.com including a high quality photo of the quilt or bring items with this form filled out to one of the intake days listed on the previous page in this newsletter.

Questions? Email mcgwin@frontier.com or call June at 608-587-2388



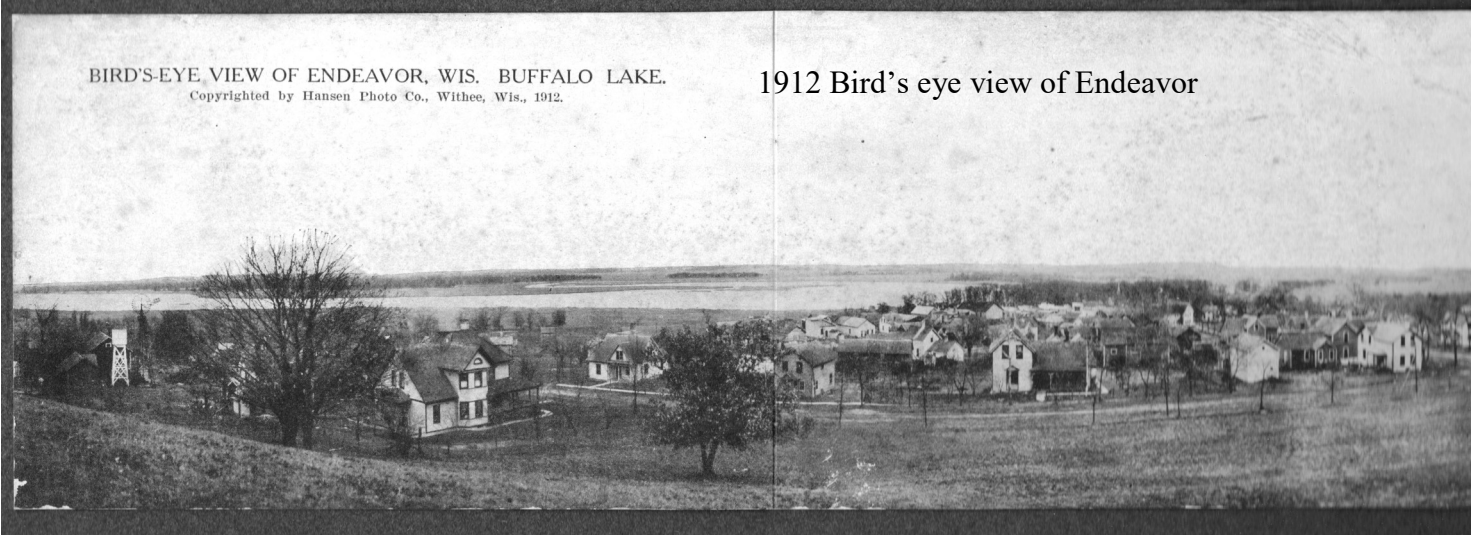
Quilting Bee from the Methodist Church in Montello. Group photo taken in front of Asenath Brown's home on Lake Avenue, Montello. Asenath Brown, Mary Cummings, Mrs. Currie, Mrs. Gardner, Mrs. Wincell, Mrs. Nankiwell, Pricilla Leonard, Mrs. Wallschlaker, Jenny Davis and Fluff.



PLEASE RENEW YOUR MEMBERSHIP or if you are reading this newsletter and are not yet a member, please JOIN NOW. Membership is due November 1. Remember, Life Time membership is \$200 and you never pay again! Individual \$10 Family \$25 Sustaining \$25 Business \$50 (includes business card in newsletter for a year). We need your support.

BIRD'S-EYE VIEW OF ENDEAVOR, WIS. BUFFALO LAKE.
Copyrighted by Hansen Photo Co., Withee, Wis., 1912.

1912 Bird's eye view of Endeavor



Left, curling on the Fox River at Endeavor, 1898. Someone just donated to the Marquette County Historical Society the early minutes of the Endeavor Curling Club. The minutes were purchased at the George Smith estate auction. They are in the collection of MCHS and you can view them by coming to MCHS when we are open on Wednesdays from 1 to 4 or by setting up an appointment.

Find us on Facebook

Be sure to LIKE us on Facebook and enjoy the changing posts about history in Marquette County. You can add comments about your own experiences or information about each post.

Pick us as your Amazon Smile Charity

If you make purchases through Amazon, please consider making them through smile.amazon.com and choose the Marquette County Historical Society as your charity of choice. Amazon donates .5% of qualified purchases to the chosen charity. The Marquette County Historical Society has already received \$22 from one Amazon Smile user in just two months. It all adds up. If you purchase items on Amazon, please consider purchasing from Amazon Smile and naming the Marquette County Historical Society as your chosen charity.

"If you can dream it, I can build it!"



"Lost trades Specialist"

**Reclaim Flooring
Restoration
Modern Building**

**Jody Bowman
608-697-2633**

bbccarpentry@gmail.com

The Marquette County Tribune

"Recording Marquette County History since 1859"

P.O. Box 188, Montello, WI 53949

608-297-2424

www.marquettecountytribune.com

*Montello
Care Center*



251 Forest Lane

Montello, Wisconsin 53949

Phone 608-297-2153



Adams-Marquette Veterinary Service, Inc.

W8881 Hwy. 82 • Oxford, WI 53952 • (608)589-5768



HOMES LAND RECREATION

608-296-2462 • Westfield WI

www.kravickrealty.com

True Value.

VIRCHS TRUE VALUE

220 S. MAIN ST.

WESTFIELD, WI 53964-7507

608-296-2444

**READERS'
REALM**

**Gallery of New & Gently-Used
BOOKS**



**BOOKS,
GIFTS &
WHIMSY**

**147 E. Montello
Street**

608-297-2200

**Open 7 Days a Week
Special Orders Welcome**



Kempley sod Farm

W6389 Hwy 23

Endeavor WI 53930

608-297-2653

Marquette County Historical Society

125 Lawrence Street, P.O. Box 172 **Westfield, Wisconsin 53964**

(608) 296-4700 / e-mail: mcgwin@frontier.com

web site: www.marqcohistorical.org

Hours: Open Every Wednesday Afternoon (1:00-4:00 p.m.)

Other Times Available by Appointment

Officers: President: Leroy Stublaski Vice President: Ed Thalacker

Secretary: Carol Claesges Treasurer: Kathy Colmer

Board of Directors:

Greg Smith (2018) June Schumacher (2018) Rich Faltz (2017) Sue Standke (2018)

Karen Watkins (2017) Allen Wilkomm (2017) Joan Ingraham (2018)

"Imprints: On the Sands of Marquette County" is the quarterly published newsletter of the Marquette County Historical Society

Editor: Kathleen McGwin

GRAND MARSH STATE BANK

Main Office

Grand Marsh, WI 53936

608-339-3351

Mound View Branch Bank

Adams, WI 53910

608-339-7722

Oxford Branch Bank

Oxford, WI 53952

608-586-5000

24-Hour Line: 608-339-2400

Right, from Evelyn Cummings scrapbook. Christmas 1917.



HOMES LAND RECREATION

608-296-2462 • Westfield WI

www.kravickrealty.com



Johnson Homestead 1856, LLP

W7880 Cty Rd D
Oxford, WI 53952

Joan M. Ondercin

612.227.2005

jmondercin@aol.com

MCCARTNEY CARPET
FLOORING & WINDOW COVERINGS

BILL & JOAN MCCARTNEY

EMAIL
mccartnecarp@yaho.com (608) 296-4444

WEBSITE
www.mccartnecarp.com 404 N. Main Street
Westfield, WI 53964



Great plants for local soils!

Native Perennial Plants and Seeds

Retail Store

608-296-2914

W7262 Dover Court, Westfield

Catalog Sales

608-296-3679

P.O. Box 306,

Westfield, WI 53964

www.prairienursery.com