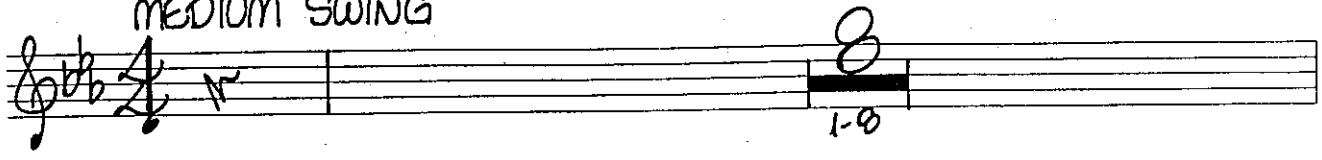


It's Only A Paper Moon

VOCAL SOLO

Words by **BILLY ROSE** and **E.Y. HARBURG**
Music by **HAROLD ARLEN**
Arranged by **JERRY NOWAK**

MEDIUM SWING



9 *mf*
SAY, IT'S ON-LY A PA-PER MOON — SAIL-ING O-VER A

12 CARD-BOARD SEA. — BUT IT WOULD-N'T BE MAKE — BE-LIEVE, — IF

15 YOU BE-LIEVED — IN ME. — **17** YES, IT'S ON-LY A

18 CAN-VAS SKY, — HANG-ING O-VER A MUS-LIN TREE, —

21 BUT IT WOULD-N'T BE MAKE — BE-LIEVE, IF YOU BE-LIEVED — IN ME. —

25 WITH - OUT YOUR LOVE, — IT'S A

27 WDN- KY-TONK PA-RADE. — WITH-OUT YOUR LOVE, —

07500009

Vocal Solo

30 IT'S A MEL-O-DY PLAYED IN A PEN-NY AR-CADE.

33 IT'S A BAR-NUM AND BAI - LEY WORLD, JUST AS PHON-Y AS IT
 TO CODA \oplus GO TO CODA 2ND TIME

36 CAN BE. BUT IT WOULD-N'T BE MAKE BE-LIEVE IF

39 YOU BE-LIEVED IN ME.

41-48 TO 17

49 YES, IT'S ON-LY A CAN-VAS SKY HANG-ING O-VER A

52 MUS-LIN TREE BUT IT WOULD-N'T BE MAKE BE-LIEVE IF

55 YOU BE-LIEVED IN ME. WITH-

D.S. AL CODA

57 BUT IT WOULD-N'T BE MAKE BE-LIEVE,

59 I KNOW IT WOULD-N'T BE MAKE BE-LIEVE, NO, IT WOULD-N'T BE MAKE

62 BE-LIEVE IF YOU BE-LIEVED IN ME!

65-66 67