

*Welcome, Neighbor - Hope we see you here.
Thurs. night will be show & tell night -
informally. Bring your sheets!
ha*

May 28-June 3, 1992 D.E.I.G. PORTLAND SEMINAR

The announcement and detailed information you've been waiting for!

\$250 (non-members \$300) will get you:

Registration: 1-5 pm Thursday, May 28.

Open House/Merchant Night/Show & Tell Thursday evening, 7 pm.

8 three-hour classes (Fri., Sat., Mon., Tues.; 9-12 am & 2-5 pm)

6 nights single bed (w/linen) lodging (Thurs. thru Tues.)

14 full & delicious cafeteria meals (Thursday supper thru
Wednesday breakfast, except Sunday on your own).

(Diabetics will do fine)

Check-out: 9-12 am, Wednesday, June 3.

The Seminar will be held at the Multnomah School of the Bible, 8435 N.E. Glisan Street, Portland, OR 97220. Office ph: 503/255-0332 (for urgent messages only - there is a pay phone in the dorm). See map.

The College now has an all-meals or none policy (tho you may "brown-bag" lunch); and no extra nights beyond Thurs. thru Tues. lodging.

Since they are in the process of re-doing all the dorm bathrooms, we will be able to use only 1/2 of the girls' dorm up & down, and 1/2 of the "boys'" dorm up & down. (There is a separate small building to house men.) We have 145 beds available. The girls' dorm has two single beds & a wash basin to a room, with toilets/showers down the hall. First floor is absolute ground level (wheelchair accessible). The second floor is up stairs. The "boys'" dorm has a set of bunk beds & a wash basin to a room, with toilets/showers down the hall. We will only use the lower bunk because the upper one is quite high with no footholds. The first floor is up a shallow ramp/few stairs. Its second floor is then up a long gradual ramp.

Half of the classes will be in the Library building lower-level. There is an elevator for anyone with stair-problems. The dining room (cafeteria) and other class-rooms is in another building, so we will get a little exercise and fresh air between classes.

Evenings and mornings can be cool here. Bring a light wrap, at least. Bring your own soap, along with your other personal needs. Dress code will be casual. Do try to wear something with Brazilian Embroidery on it, at least the first night? And/or/at least wear your name-tag done in it. If you intend to do any needlework in your room, bring a light.

Additional lodging can be found at area Motels:

A most cooperative hotel only 4 miles down I-5 is the

Sunnyside Inn; 12855 S.E. 97th; Portland, OR 97015; 800/547-8400

Free Airport Transportation by calling the above number.

Shuttle to Portland's largest shopping mall nearby.

Room rates frozen for D.E.I.G. at \$51.94 (incl. tax) for 2, 3, or 4.

Two Queen size beds. Only \$45.58 for 1 alone. Continental breakfast.

Probably enough driving to accommodate transportation to & from classes for those flying in.

Also, within daylight walking of less than 1 mile:

Motels CAPRI: 503/253-1151, and CABANA: 503/252-0224...

Both (same owners) single/\$31.61; 2 in 1 bed/\$34.88;

2 in 2 beds/\$38.15; 3 in 2 beds/\$40.33; 4 in 2 beds/\$42.51

Also, probably enough driving to accommodate transportation to & from classes for those flying in.

"Do-it-yourself" food:

5 fast-foods, 2 restaurants, & Safeway all less than 1 mi. away.

"Taxi-Van" fare to and from the Airport will be \$5 each way, payable to the driver, who will identify themselves with a sign "D.E.I.G. SEMINAR". (Those staying at the Sunnyside Inn have free service by calling their 800 number.)

There will be a separate key-deposit to the college: \$10 U.S. cash. It will be returned at check-out, providing that all the linen is accounted for in your room before it is locked by college personnel. We are sorry to have to do this, but several immature ladies last year took pillows, linen, and blanket.

The dorms have a Security lock-in/alarm set midnight to 6 am.

The College Insurance is based on NO SMOKING in any building (including the dorms). This is a very important issue, because if it is violated the College could loose their insurance. So...anyone caught smoking within the buildings will be expelled without refund. Last year at B.E.S.T., the Security Guards did have to ask 4 smokers to step outside, but did not report it until after the Seminar was over. This year, they will escort any offender(s) to their office. Smoking is permitted outside the buildings, and the Motels do allow it. We do ask everyone's cooperation in applying Peer Pressure, so that we may be allowed to use this campus for Seminars in the future.

Merchant tables will be available from the Seminar Chairperson (Virginia Chapman 503/762-0381) for \$10 each, with a limit of one each due to space problems. Anyone with a re-sale license may sell anything that has to do with Brazilian Embroidery.

~~SUNDAY TOURS OFFERED:

Ramon Prichard: Approximately 10 hours, from 9am - \$25 (plus meals)

Visit lots of special places during a leisurely, all day tour with plenty of rest stops and dining on the coast. This guy loves to drive and show-off Oregon!

Up the Gorge to Multnomah Falls,
Down the Columbia River to the port of Astoria,
Along the coast, thru several seaside towns,
Eat by the ocean, enjoy viewpoints,
Visit the Tillamook Cheese Factory, AND PROBABLY A LOT MORE.

Connie Carpenter/Regional Sightseeing Service, Inc.: 3-4 hours - \$15

She was loved by all who took her tour last year at B.E.S.T.

Rhododendron Gardens,
up the Gorge to Multnomah Falls,
around the city to special spots,
up to the Rose Gardens (free)/Japanese Gardens (\$3.50) area.

There are some other very interesting things to see in our area:

Pittock Mansion (\$3.50)...3-4 miles from College, 1-5 pm only

Schreiner's Iris Gardens...200 acres, about 45 minutes south on I-5; 8am-5pm.

Have fun choosing your classes now...isn't there a wonderful selection?

Fill in both sides of your registration, please.

Mail it with your check to:

Loretta Holzberger, D.E.I.G. Treas.;
13701 123rd St. E.; Puyallup, WA 98374.

D.E.I.G. Field membership
\$15.00 July-July
\$10.00 1/2 year

D.E.I.G. CLASS SCHEDULE

FRIDAY, 5/29 AM:

#1,	ORIENTAL SPIDER MUM	- RG
#1,	BOUCLE CARNATION	- MF
#1, ✓	P CREATIVE USES OF B.E.	- CP
#2,	DOGWOOD	- VC
#2, *	P SUMMER TRELLIS	- PO
ALL, \$	P COLOR ANALYSIS	- JK
#2,	CARNATION	- RF
#3,	MOCCASIN FLOWER	- MK
#3,	JUDY JENSEN ROSE	- FW
#3, \$	WIRED LACY DAFFODIL	- LH

FRIDAY, 5/29 PM:

#1, *	FLUFFY POPPY	- PO
#1, \$	P LOP-EARRED BUNNY/DRESS	- RS
#1,	MERIDETH ROSE	- FW
#1, \$	P POINTSETTIA ORNAMENT	- JS
#2,	ASTILBE	- VC
#2,	ORCHID	- MF
#2,	POPPY POD	- MK
#3,	CYCLAMEN	- RF
#3, \$	P FRENCH HAND SEWING	- CP
#3, ✓	LACY WISTERIA	- JK

SATURDAY, 5/30 AM:

#1, *	CALIFORNIAN QUAIL	- GB
#1, \$	P SASK. TIGER LILY SACHET	- JS
#1, \$	FP BRAZ. EMB. CORSAGE	- RR
#2,	MINIATURE FALL MUM	- JK
#2, ✓	IRIS	- RF
#2,	SIMPLE FUCHSIA	- VC
#2, \$	P ULTRASUEDE JEWELRY	- CP
#3, *	APPLE	- MF
#3,	CANTERBURY BELL	- MK
#3,	SPIDER MUM	- PO

SATURDAY, 5/30 PM:

#1,	TEACUP FLOWER	- PO
#1, \$	P CANADIAN DAHLIA/CARD	- JS
#1, \$	P PICTURE FRAME	- LS
#1, ✓	LAZY-DAZY SPIDER-WEB	- VC
#2, \$	FP COVER A SCRAPBOOK	- RS
#2,	KARYN'S ROSE	- JK
#2, *	SHEEP	- JB
#2,	IRIS FLAGS	- MK
#3,	TIGER LILY	- RF
#3, *	SWEATER STITCHING TECH.	- MF

MONDAY, 6/1 AM:

#1, *	BELLS & BOW	- MF
#1, \$	P 8" ANGEL DOLL	- HA
#1, \$	P TEMARI BALL WITH B.E.	- LH
#2,	CALLA LILY	- RG
#2,	OLD FRENCH ROSE	- RF
#2,	PANSY	- VC
#2, \$	✓ FLOWER PIN/PENDANT	- ED
#3,	CALCEOLARIA	- MJ
#3,	FUCHSIA	- MK
#3, *	CHRISTMAS POINSETTIA	- PO

MONDAY, 6/1 PM:

#1,	JACQUELINE'S ROSE	- RF
#1, \$	P ANGEL ORNAMENT	- GB
#1, \$	P FLOSS HOLDER	- PB
#1,	UP-DOWN CAST-ON	- LH
#2,	GRAPE HYACINTH	- VC
#2,	INDIAN FACE	- JB
#2,	WEDDING ROSE	- JK
#3,	FAIRY SLIPPERS	- MK
#3, ✓	DISA ORCHID	- MJ
#3, \$	P FREE BUTTERFLY	- PO

TUESDAY, 6/2 AM:

#1,	VINCA	- RF
#1,	BORDER STITCH	- MF
#1, \$	P SEWING KIT	- PB
#1, \$	FP ROUND BOX	- LH
#2,	CHOCOLATE LILY	- MK
#2, *	P LORETTA'S ROSE SACHET	- PO
#2, ✓	JINX'S ROSE	- JK
#3, ✓	FREE FUCHSIA	- RG
#3,	RHODODENDRON	- VC
#3,	PAPH. ORCHID	- MJ

TUESDAY, 6/2 PM:

#1,	PRISSY MUM	- VC
#1, \$	P SILK FABRIC PENDANT	- FB
#1,	MONET ARTISTRY	- SG
#2,	BACHELOR'S BUTTON	- MK
#2, \$	P HARDANGER NEEDLE CASE	- EP
#2, \$	P PAINTED LEAVES	- CP
#2,	LILY	- MF
#3, ✓	WOODLAND ORCHID	- RF
#3,	CHRISTMAS ROSE	- PO
#3,	MINIATURE VIOLA	- JK

TEACHERS:

HELEN AHERN

AN BOYER

ANET BURR

PHYLLIS BURGESS

FLO BURGHARDT

VIRGINIA CHAPMAN

EVELYN DeVRIES

RIA FERRELL

MARIA FREITAS

RUTH GRIFFITH

SUE GYORKE

LORETTA HOLZBERGER

MIRIAM JANEWAY

JINX KIRKPATRICK

MARY KURBIS

PHYLLIS OTTO-BISSO

ELSA POTTICARY

CARRIE POTTS

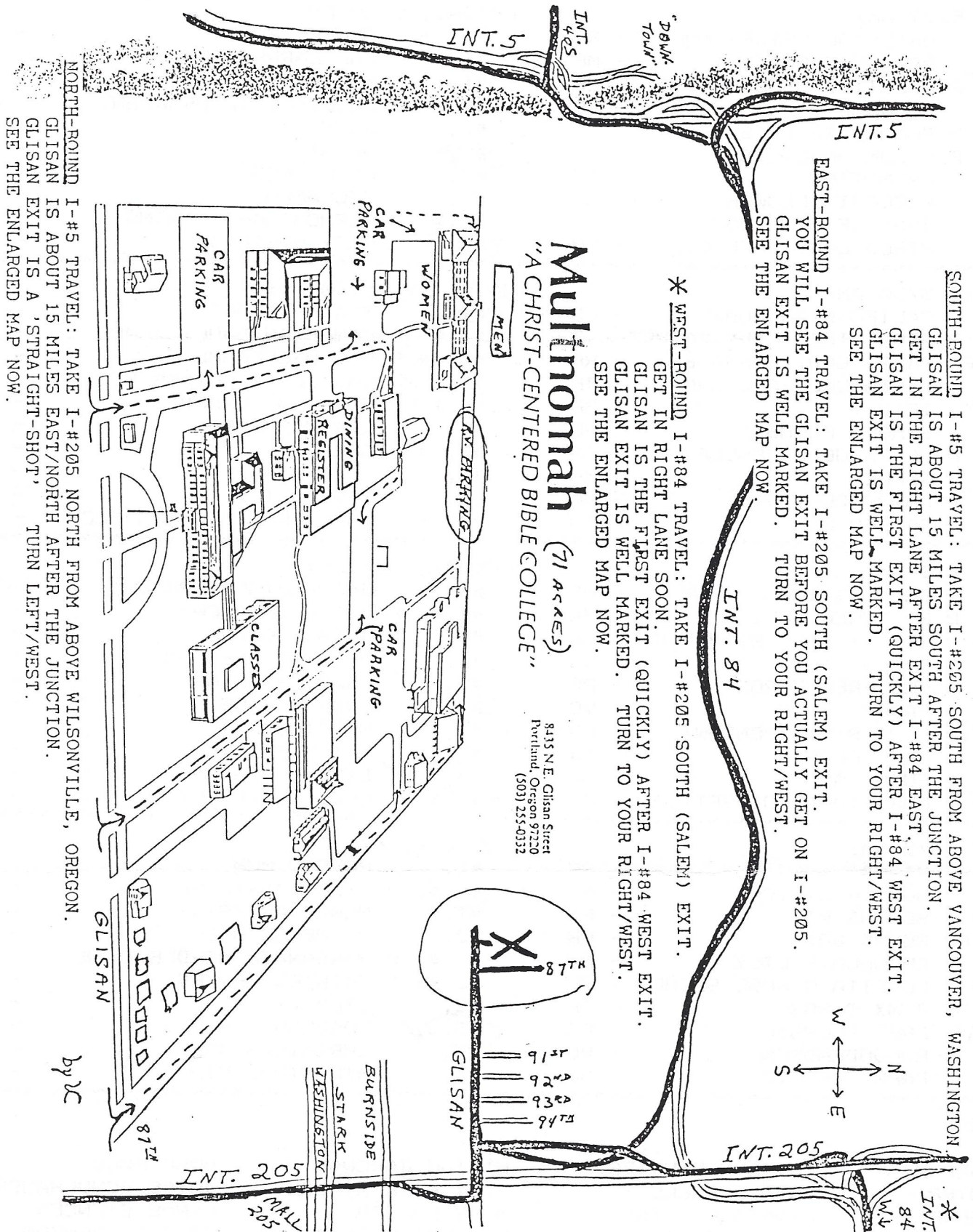
ROSE ROOD

JOYCE SCHULHAUSER

LYNNE SPENCER

ROSE STEVENSON

FLORENCE WORCESTER



CLASS DESCRIPTIONS & SUPPLY LISTS

NOTICE: Classability: #1 = Easy; #2 = Medium #3 = Difficult

"\$"= Note KIT FEE for these classes, paid to teacher.

"*"= Note SPECIAL supply list for these classes.

"F"= You must bring a previously Finished design for this class.

"P"= Either a craft-type Project or another needleart, combined with Braz.Emb.

20 x 24" Fabric & needles will be given to you on attendance registration.

Bring a blue or purple fabric marking pen; paper & pen/pencil; hoops if u use

Class Hand-outs for everything EXCEPT those already published ("See Book...")

It is anticipated that you will want to have the Book.

#1, \$, ANGEL DOLL (8") - HA: Need flower & green G, hair B optional. "Little Angela" can be used on your tree top, hang somewhere, or fit over a glass. She has a lace-trimmed skirt to embroider, and wings. #4 KIT FEE includes lace stitched batist, stuffing, halo, ribbon.

#1, \$, ANGEL ORNAMENT - GB: Need #0 & 118 L, #3 B (hair), #50 & 115 G, #202 I. A 4" stylized, side-view angel done on white Congress cloth to get you ready for next Christmas. \$3.50 KIT-FEE will supply the Congress cloth, loaner Stretcher Bars to work it on, tapestry needle and Balger Blending Filament.

#3, *, APPLE - MF: Need apple color I, *and an old nylon stocking. This technique has a lot of potential as other fruit/veggies...depending on the shape, and the stitching coloration. See her Book #3.

, ASTILBE - VC: Need flower & green L. A pleasant Knit-on stitch that you will use on lots of other flowers to give more dimension. Try to bring a couple threads of several graduated shades (at least lt., med., dark). See her Book 2.

#2, BACHELOR BUTTONS - MK: Need same flower L & I, green B. Uses LzDz, Satin st., Turkey st. Unique placement of LzDz-Bullion Chain. See her book.

#1, BELLS & BOW - MF: Need I for both. A stitching improvement on her old design... much more dimensional now. See her Book 2.

#1, BORDER STITCH - MF: Need L or N. You will have plenty of time to learn this new bordering stitch, plus time leftover to ask Maria questions.

#1, BOUCLE CARNATION - MF: Need flower B, green F or I. Has the DBh. "in a variation you will be able to use in lots of other ways".

#1, \$, F, BRAZ. EMB. CORSAGE - RR: Need to have 5 appoximately 1" flowers in N, B, or L (ones done with all the stitching at the center only) Finished but not cut out. Bring also ribbon or lace for the bow. #3 KIT-FEE will supply floral tape & wire, pearls for Field Flowers.

#3, CALCEOLARIA - MJ: Need flower L, #80 I & L. You may know this flower as the "Pocket-Book" plant. A lovely, non-stuffed DBh. pouch by a botanical expert.

#1, \$, *, CALIFORNIA QUAIL - GB: Need #0, 128, 203, & 208 G; #124 I; 2 sk. each #132 L & #126 I; optional #59 L & green G for ground. *SAVE the 12" sq. ofigger provided for this class. This prize-winner will show you a different technique to get feathers. "A really attractive interpretation of a wild bird."

#2, CALLA LILLY - RG: Need same flower L & I, yellow N & I, green I. This DBh. flower is stitched out flat, and then rolled up into shape. Very realistic.

#1, CANADIAN DAHLIA -JS: Need flower L & I, Prairie Butterfly G & I, green G. "...really different, multiple overlapping DBh petals that twist and catch the light". The design is planned to use with a greeting card (not supplied in class, but available at Seminar) for someone very special.

#3, CANTERBURY BELL - MK: Need same flower L & I, center I, same green L & I. A solid cup, with variation potential. Uses Bullions, DBh. See her book.

#2, CARNATION - RF: Need flower L & G, green L. This uses a very different method of building up the Cast-on petals of the flower. See her book.

#2, CHOCOLATE LILY - MK: Need flower L, center I, green I. Uses Drizzle & DBh. See her book.

#3, *, CHRISTMAS POINSETTIA - PO: Need 2 sk. red, pink, or white L; #213 & 113 I; green L; plus * #28 jewelry wire (and old scissors); & about 12 red seed beads ("both at craft stores"). "A 3 inch, life-like Poinsettia with many free-standing sculpted petals combining the Up-down Double Cast-on and DBh."

#3, CHRISTMAS ROSE - PO: Need #0 L, mint-green I for center. This is a large, very life-like, DBh. petaled rose with a special center modeled after the winter blooming rose.

#3-2-1, *, COLOR ANALYSIS - JK: Such specific colors are needed for a color wheel, that a \$3.50 KIT-FEE will supply them all in the correct amount, along with the posterboard 'wheel'. Learn base colors and combinations that can enhance your design, and/or create depth. Good for all levels, and placed at the beginning of the Seminar on purpose!

#2, *, F, COVER A SCRAPBOOK - RS: you will need to bring * a Finished design (4 - 6" oval ?) to place on the cover, plus:

3/4 yd. of 45" wide decorator fabric, 1/2 yd. of 1" Batting,
1 page-size coordinating plain fabric to frame design,
3/4 yd. of "Wonder Under", 1 yd. lace trim,
8 1/2 x 11" (or so) scrapbook to cover, 4 page-size poster boards,
about 1/2 bottle of "Allene's" (white) glue for cloth...
(generally \$2.50 per small gold bottle);

#1, CREATIVE USES OF B.E. - CP: Need N, B, L, F, I, G to experiment with. Metallics will be available for you to try. Learn several methods for transferring designs to fabric, both white & colored. Learn techniques to add Brazilian Embroidery to a variety of wearables (your own Wearable-Art!)--including sweaters, sweatshirts, tennis shoes, socks, barrettes, jewelry, home decor items and greeting cards.

#3, CYCLAMEN - RF: Need flower & green L. N E W ! Definitely dimensional...Stem & Satin stitches, DBh., and Long French Knots. A life like flower.

#3, DISA ORCHID - MJ: Need flower L, green #80 I & L. As an orchid specialist, she really gets these Detached Buttonholes right where she sees them as botanically correct. You'll want to pick them!

#2, DOGWOOD - VC: Need flower L & F, green L. A simple, but life-like rendition with a tricky Rope-stitch branch. See her book 2.

#3, FAIRY SLIPPER - MK: Need #112, 114, & 206 L; #118 I; green #80. Uses Double Cast-on, Bullions, DBh. See her book.

- #1 \$, *, FLOSS HOLDER - PB: Try to bring a sewing-machine. Need *:
 - closely woven outer fabric 24" x 30 to 45" wide, and matching thread;
 - lining/inner (? perma-press muslin) fabric same size;
 - Iron-on interfacing 24" x only 8 1/2" wide...iron onto wrong side of outside fabric along the 24" side. This will be your embroidery site, but does NOT have to be embroidered before class.
 - \$3 KIT-FEE will supply twill tape and sheer for floss channels. Those who saw her sampler/floss holder at the Portland B.E.S.T. were really impressed. It allows you to have both with you in one place.
- #2, \$, FLOWER PIN/PENDANT - ED: Need flower & green G. You'll do a simple little flower with Glory. Bring a few seed beads to add, if you have them, with a #8 needle and G wt. Don't buy special, there will be some there. 2 1/2" hoop optional. Choice of a 2" Pin/pendant with backing for \$6 KIT-FEE.
- #1, \$, FLUFFY POPPY - PO: Need variegated B & matching G, green I. This is a fun, quick, fluffy flower using a special technique to achieve a very unique flower. *Seed Beads are optional for the center, but add a lot.
- #3, FREE FUCHSIA - RG: Need flower L, yellow G, green I. This beautiful "free-form" needlelace (DBh.) hangs only by its stem! Notice its shadow.
- #3, \$, FREE BUTTERFLY - PO: Need L & I to go with lavender, pink & blue. \$4 KIT-FEE supplies cut irridescent fabric and metallic threads. The 4" Butterfly's wings are embellished separately with Bullions, Cast-ons, Satin st., Turkey st.; and then attached to the design fabric.
- #, \$, FRENCH HAND SEWING - CP: Learn these techniques by making a sachet with Entredeux, Lace, and Pin-tucks; leaving room for Braz.Emb. \$3 KIT-FEE includes fine-fabric, Entredeux, and laces. At the end of class, she will demonstrate the same techniques by sewing-machine.
- #3, FUCHSIA - MK: Need flower L & I, center I, green I. Uses Double Cast-ons, Pistil st., and DBh. See her book.
- #2, GRAPE HYACINTH - VC: Need flower G, green L & G. Repeated tiny Bullions placed just so, and stay where they're put! ...the secret is in the Fabric Bite! Leaves use a little different style of couching.
- #2, \$, HARDANGER/NEEDLE CASE - EP: Every stitcher should have a needle-case. \$4 KIT-FEE will include 5" x 9" Hardanger fabric, traditional cotton floss for Kloster blocks & 'eye' weaving, and smaller tapestry needle. After doing the Hardanger design, you will be shown how to finish the Needle Case. The design will leave room for you to add your own Brazilian later.
- #2, INDIAN FACE - JB: Need flesh colored G for face; I for hair. This will give you a technique to use in the future on people. The larger design will be available free, with instructions for a very minimal fee.
- #2, IRIS - RF: Need flower N & L, green L. Just a little different. Uses Cast-ons, DBh., Satin st., & French Knots.
- #2, IRIS FLAGS - MK: Need flower L x 2, green I. Uses Double Cast-ons, Turkey st., and DBh. See her book.
- #1, JACQUELINE'S ROSE - RF: Need flower & green I. This big, impressive rose is easy to learn. Uses Padding/Satin st., Blanket st., and Bullions.

#2, JINX'S ROSE - JK: Need flower L. "A long stem rose with self-padded leaves. It looks just like your 'honey' handed you a real rose." Uses Sati st., Bullions, and DBh.

#3, * JUDY JENSEN ROSE - FW: Need flower L. A very different rose technique, created in memory of our friend/member by her D.E.A.R.est Florence. A "tomato" (pin cushion) will be most helpful & will be available at the Seminar.

#2, KARYN'S ROSE - JK: Need flower L - 3 shades. This realistic rose is open wide to soak in the summer sun. It combines Satin st., Bullion, & DBh.

#3, LACY WISTERIA - JK: Need flower & green I. "A little different technique to create a very delicate Spring flower with the petals free from the fabric."

#1, LAZY-DAZY SPIDER-WEB & FRIENDS - VC: Need flower L & N, green I. There are so many different ways to use the Spider Web principle besides just weaving it. We will make three different flowers with it: LzDz, ribbed, and Det. Bullion.

#2, LILY - MF: Need flower ? white L. An elegant but simple statement...in her Book 3. You'll use this new Knotted Cast-on stitch lots more.

#1, *, LOP-EARRED BUNNY/DRESS - RS: Need flower L, green I. This 13" fancy "hunny" of a bunny will be completed for you, dress and all for KIT-FEE of \$30. Not only that, but a secret something special (new flower) to embroidery on the dress. A variety of colors will be offered in class.

#2, *, LOREITA'S ROSE/HEART-SACHEI - FO: Need 2 sharply contrasting shades of same flower color, green I; *plus two 8" sq. pcs. fancy fabric for background; stuffing; and about 25 2-3mm. pearls. "A highly dimensional rose using Up-down Cast-on petals and placed on a decorated heart, trimmed in a lace stitch."

#3, MERIDETH ROSE - FW: Need flower L. A new rose in honor of her daughter. Fuller than most others. A little different technique.

#3, MINIATURE FALL MUM - JK: Need flower & green G. A 1" x 1 1/2" design, with the Mum's tiny out-stretched petals combine Bullions, Cast-ons, and Satin st.

#3, MINIATURE VIOLA - JK: Need flower (purple, lavender & yellow) G, green G. Small Violas with full but tiny faces made of Cast-ons, Bullions, and Turkey st. are tucked into a small woven basket.

#3, MOCASSIN FLOWER - MK: Need flower L & #215 L, center I x 2, green I & G. Uses Double Cast-ons, DBh. See her book.

#1, MONEI ARTISTRY - SG: Need varieg./sh. subtle L colors. A philosophical Impressionistic painting with "our" stitches. She will have lots of pictures to help inspire you, too.

#3, OLD FRENCH ROSE - RF: Need flower & green I. With its 10 loose-standing, solid petals will give you a great sense of accomplishment. Bullions, Blanket stitch, DBh., and French Knots.

#2, ORCHID - MF: Need flower N, L, I, & G. Quite a few different stitches used in these 6 petals and bud. See her Book 3.

#1, ORIENTAL SPIDER MUM - RG: Need flower I, green I. This Mum is going places! Mostly all-over, like some Mums do. But this one is so dainty. Uses Stem st., DBh., Blanket, and Cast-ons.

#1, \$, *, PAINTED LEAVES - CP: Need floss for any flower you wish; plus * (OPTIONAL) some extra fabric (Imperial Broadcloth works well). You will learn to paint several styles of leaves to accompany your Brazilian Flowers. Fabric dye, brushes, and other supplies for your use will be included in \$5 LAB-FEE. CLASS LIMITED TO 12.

#2, FANSY - VC: Need flower & accent L, green L & I. Quite realistic, 2-tone, incorporating a new/stablized way of doing the 'fat' cast-on. See her Book 2.

#3, *, PAPH. ORCHID - MJ: Need flower L, green #80 I & L. This is the one with long, skinny side petals and a full (DBh.) pouch that she has perfected so it does not need stuffed. * Will need 3" darning needle (available at seminar).

#1, \$, *, F, PICTURE FRAME - LS: Need 2 sk. L for rope trim plus * Finished (completely embroidered design) to fit in a 5" x 7" oval opening. Need also: 2 pieces of 10" x 16" fabric, 9" x 11" sheet Batting, and straight pins. #3 KIT-FEE will provide plenty of glue, and the heavy posterboard "frame" to cover. (Anyone driving that can bring a portable mixer to help would be great.)

#1, \$, POINSETTIA/CHRISTMAS ORNAMENT - JS: Need flower I, green G, tassle white L, F, I. Uses a fishbone stitch for the petals. #2 KIT-FEE gives you white Damask, pearls, & sequins to make it into a diamond shaped ornament.

#2, POPPY & POD - MK: Need flower L & N, #206 L & I, green I. Uses Satin st., "Saver (figure 8) stitch", DBh. See her book.

#1, PRISSY-MUM - VC: Need flower & green L. Starting with a circle, you'll be able to adapt this easily. No guessing about the number of wraps...it's a scientific principle! See her Book 2.

#3, RHODODENDRON - VC: Need flower shaded L, green L. Plain old Cast-ons, placed just-so; and don't shoot those pistils any other direction. Add the Rope st. leaves. Do you smell it yet? See her Book 2.

#1, \$, *, F, ROUND BOX - LH: Need an 8" circle of fabric with a Finished 6" design; *plus cardboard-cutting scissors, 1/4 yd. heavier/? elegant fabric for the outside, & 1/4 yd. lighter wt. ?cotton/?silk/?poly fabric for the inside. #2 KIT-FEE will provide marked cardboard and glue.

#1, \$, SASK. TIGER LILY/BAG - JS: Need flower I, brown center & green G, cord L, tassle F or I. This Provincial flower is done also in a Fishbone stitch with Bullion centers. It will finish into a small cord-closed pouch for jewelry or whatever. A purr-fect little gift.

#1, \$, *, SEWING KIT - PB: Need to bring/borrow sewing machine, and matching sewing thread. This handy little pocketed folding pack will hold your scissors, thimble, needle pkg., and some floss. She has these completely kitted for #3 KIT-FEE.

#2, *, SHEEP - JB: Need sheep face G & wool color (wt., blk, bge.) B. Uses stacked stem stitch, brushed to 'fuzzy' him up. *A small (1 1/2") wire brush will be helpful to share; and a hoop. This sheep plus a couple more, and the Indian make up a larger design she will be glad to give you.

*, \$, SILK FABRIC PENDANT - FB: Need flower L, green I, cord L. You will do a very simple 1 1/2" - 2 1/2" flower design that can be added-to later. Beads & Metallics are optional. #2 KIT-FEE includes Silk Broadcloth, cut cardboard, batting, & Barrel clasp.

#1, SIMPLE EUCHSIA - VC: Need flower L & F, green L. Just made to give the impression...not all filled in or out. Uses the Siamese-twin Cast-ons. See her Book 2.

#3, SPIDER MUM - PO: Need a whole sk. flower L, green I. A solid support under many arched Bullion petals raises the flower 1/2" off the fabric. Learn to smoothly stitch multiple-lobed leaves.

#2, *, SUMMER TRELLIS - PO: (A NeedlePoint combination) Need softly variegated B & G to match, 3 different shades of the same color L for background/Trellis, *plus masking tape, Silver or Gold Balger Fine-Braid, optional 2 sets of 6" stretcher bars with tacks (will be easier to stitch). #1 KIT-FEE provides blue-grey Canvas needed. Delicate & lacy Rose's roses, 1/2" high, are placed over open Canvas stitches.

#2, *, SWEATER STITCHING TECH. - MF: Need flower & green N. She wore two of these to our Portland B.E.S.T. Seminar, and caused quite a sensation. She has a new one she'll be wearing to D.E.I.G. * Bring a sweater to work on.

#1, TEACUP FLOWER - PO: Need flower N & contrasting complemental L, green I. A 'saucy' little two-tone flower, using the Cup stitch.

#1, \$, *, TEMARI BALL WITH BRAZ. EMB. - LH: Need flower L, green I; *plus Baby Yarn for initial covering; a cone of Serger thread, OR large spool of regular sewing thread in a background color. You will then add a flower. \$.50 KIT-FEE will supply 2" styrofoam ball.

#3, TIGER LILY - RF: Need flower L & G, green L. This one will stand up almost an inch on the fabric! Uses Chain st., DBh., French Knots, and Drizzle stitches.

#2, \$, *, ULTRASUEDE JEWELRY - CP: Need flower L x 2, yellow center L, green I; plus * "Allene's tacky glue -- in mauve jar/bottle", and some clothes pins. Learn to work on Ultrasuede by making a matching set of choker-necklace, bracelet, & earrings. #1 KIT-FEE provides all the white Ultrasuede, cut and ready to stitch. You will be able to complete a Cast-on Pansy on the choker-necklace in class.

#1, UP-DOWN CAST-ON - LH: Need flower L or I. She will introduce a new Pansy developed with this stitch (previously called NeedleTatting), and suggest several other possibilities.

#1, VINCA - RF: Need flower I, green I or L. This five-petals-with-picots flower will give you great joy. Bullions, Blanket stitches, and French Knots.

#2, WEDDING ROSE - JK: Need white or off-white I, green I. "A rose designed to go into a wedding sampler or used by itself." Self-padded leaves. Uses Satin st., Bullions, DBh.

#3, \$, WIRED LACY DAFFODIL - LH: Need flower I & G. \$.25 KIT-FEE will provide wire. This is a very dainty 2" flower. Another new technique that will surely see more flowers!

#3, WOODLAND ORCHID - RF: Need flower L x 3, G to match one L, green I. Another dainty, life-like flower with trumpet and free standing petals. Use Bullions, Blanket st., DBh., Chain st., Satin st., & French Knots.



#1, \$, ANGEL DOLL (8") - HA

#1, \$, ANGEL

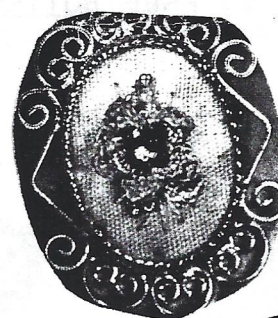
ORNAMENT - GB



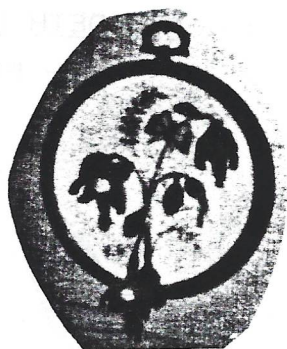
#3, CHRISTMAS ROSE - PO



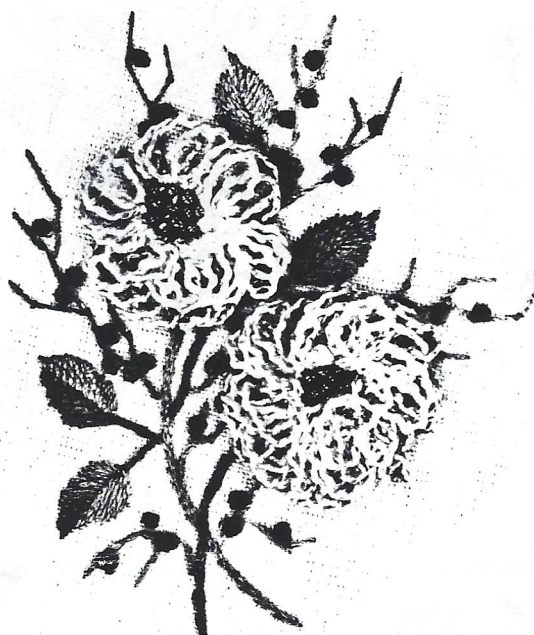
#1, \$, *, CALIFORNIA
QUAIL - GB



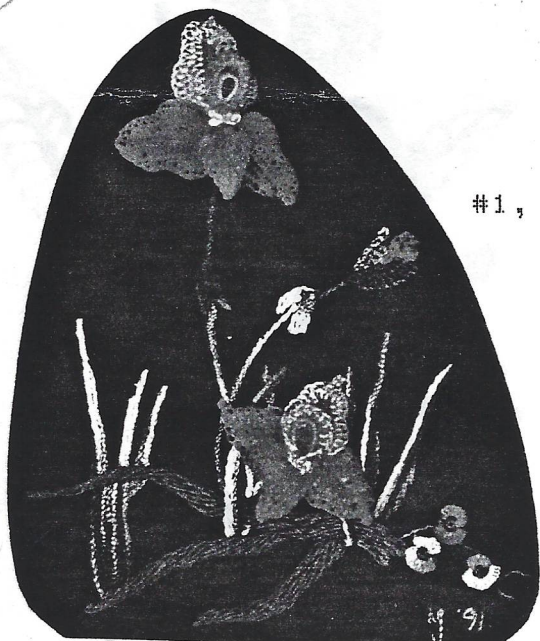
#2, \$, F, FLOWER
PIN/PENDANT - ED



#3, FREE FUCHSIA - RG



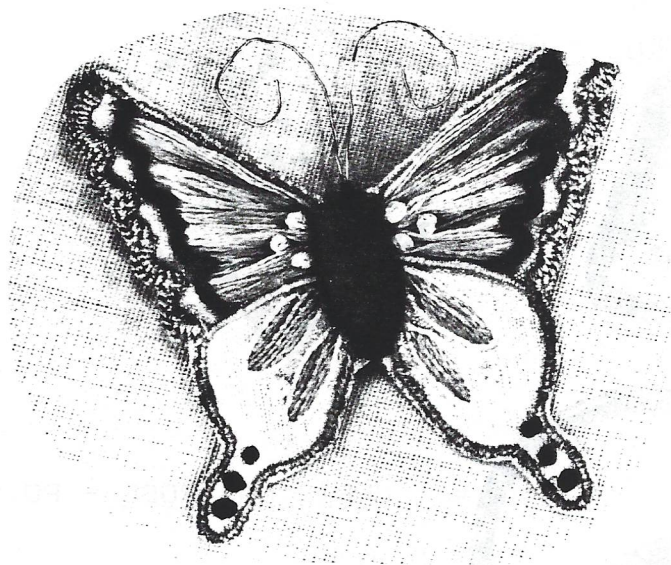
#1, *, FLUFFY POPPY - PO



#3, DISA ORCHID - MJ

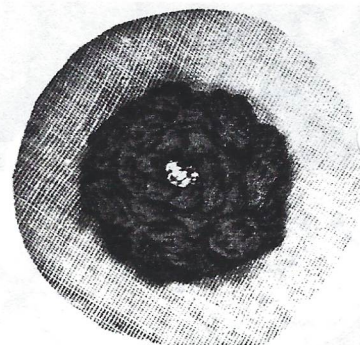


#3, CALCEOLARIA - MJ

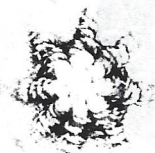


#3, \$, FREE BUTTERFLY - PO

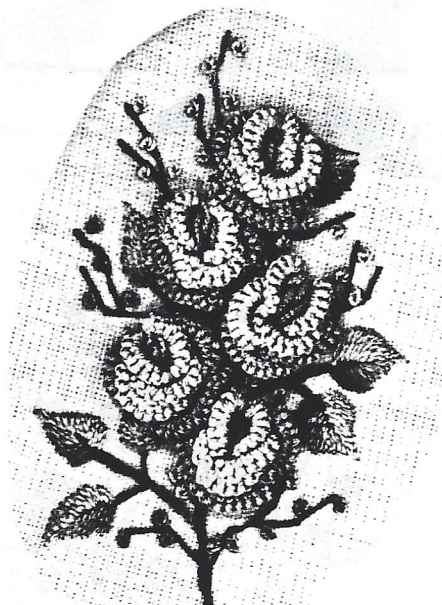
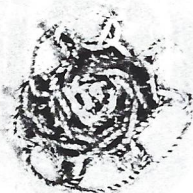
#3, \$, FRENCH
HAND SEWING - CP



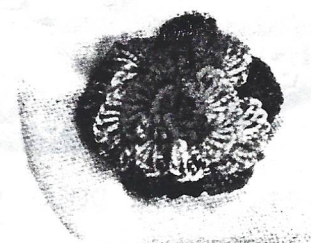
#3, JUDY JENSEN ROSE
- FW



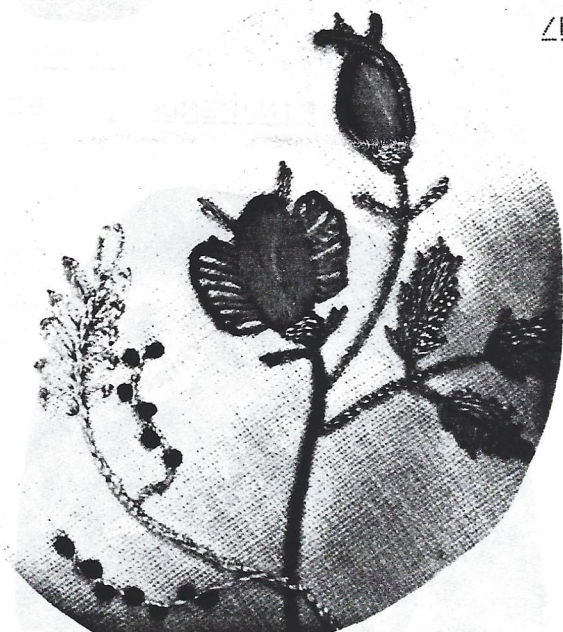
#1, LAZY-DAZY SPIDER & FRIENDS
- VC



#2, *, LORETTA'S ROSE
/HEART-SACHET - PO



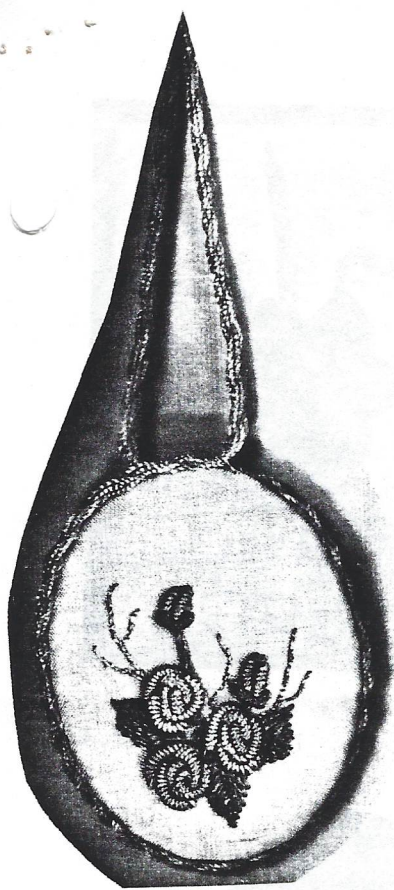
#3, MERIDETH ROSE
- FW



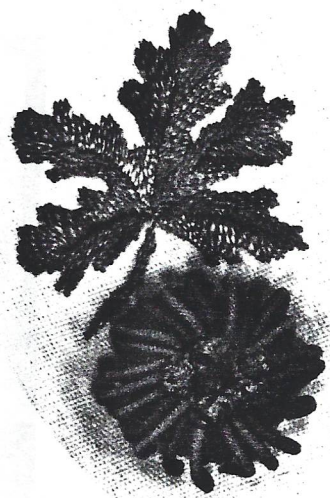
#1, JACQUELINE'S ROSE - RF



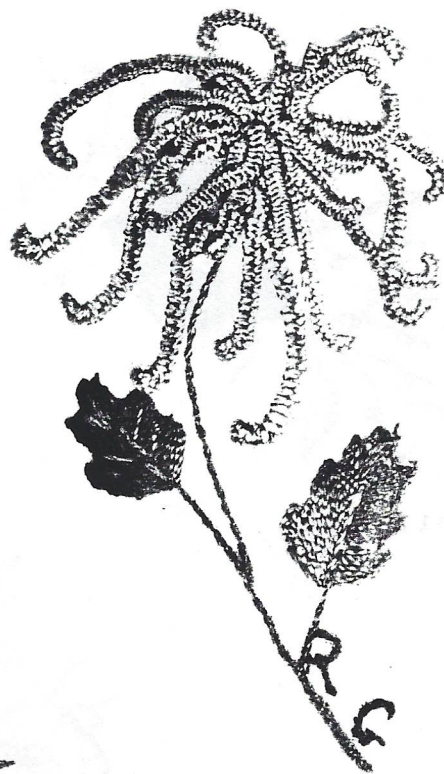
#2, IRIS - RF



#1, *, SILK FABRIC
PENDANT - FB



#3, SPIDER MUM - PO



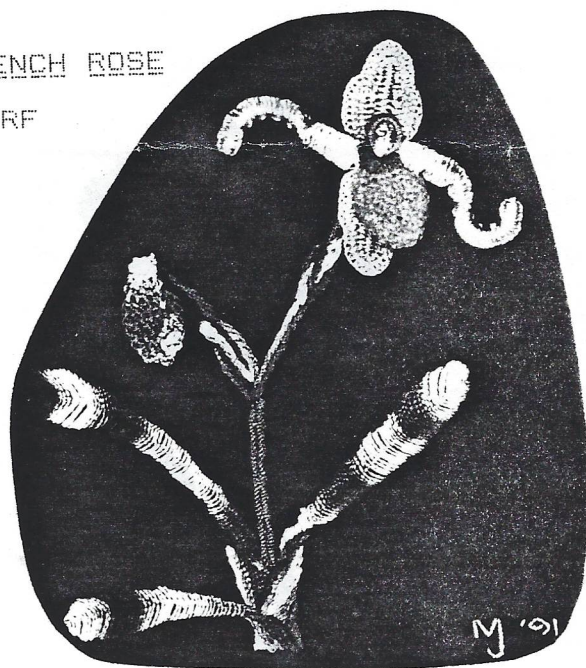
#1, ORIENTAL MUM - RG



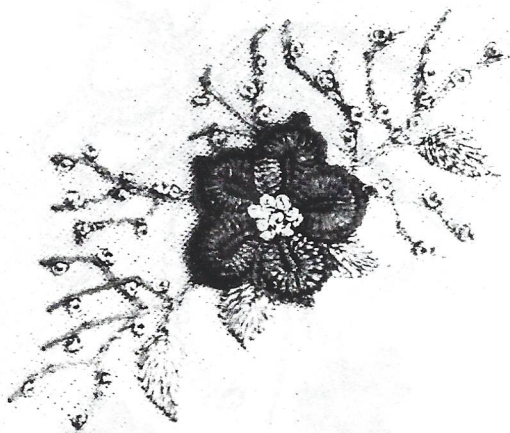
#3, OLD FRENCH ROSE
- RF



#1, *, *, F, ROUND BOX - LH



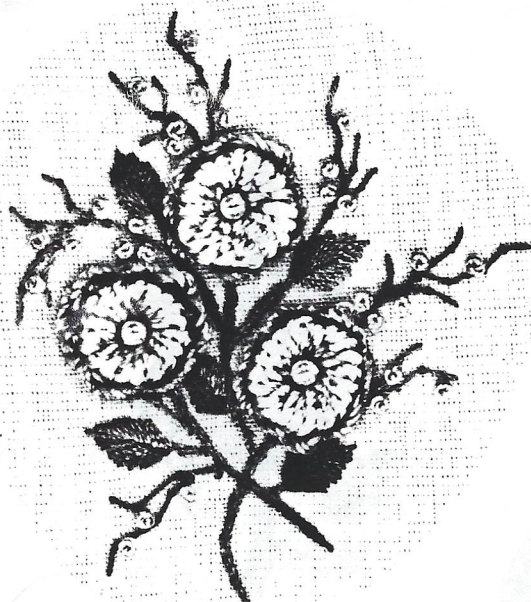
#3, *, PAPH. ORCHID - MJ



#1, VINCA - RF



#3, \$, WIRED LACY
DAFFODIL - LH



#1, TEACUP FLOWER - PD



#1, UP-DOWN CAST-ON - LH



#3, WOODLAND ORCHID - RF



#2, \$, *, ULTRASUEDE JEWELRY - CP