



# Hernando Beach 2016-2040

Vision & Business Development Plan

Maps are conceptual and represent ideas only – If you have ideas you would like considered, please submit to [hbroundtable@gmail.com](mailto:hbroundtable@gmail.com)



# Exhibit 'A'

## Cardno Bid for Stormwater Drainage



Attachment: Calienta Street - DC Johnson Topographic Survey (16750 : Award of Contract RFQ 19-

Calienta Street is a major local road located in Hernando Beach that runs from Shoal Line Blvd. north to Maplewood Drive. This section of roadway services a commercial and industrial area and provides access to the County boat ramp facility and several residential neighborhoods in Hernando Beach.

Due to the recent maintenance activity on the Hernando Beach Canal, the roadway is seeing increased industrial traffic associated with the commercial fishing industry. In addition, there are frequent forklift crossings both at the marina located on the north end as well as with the seafood packing operation. This is coupled with recreational boat launch traffic utilizing a public boat ramp on the west side and parking on the east side of the roadway. The section of roadway also sees flooding during typical storm events due to the lack of roadside conveyance and treatment with runoff draining directly into the Gulf canals.

The proposed project consists of road widening and stormwater improvements providing pollution abatement for waters draining into the Gulf, neighborhood flood relief, and enhanced traffic safety.

**PRELIMINARY ENGINEERING REPORT (PER) The CONSULTANT shall develop a PER to evaluate:**

- ▣ Typical section including two-lane urban and sidewalk for Calienta Street.
- ▣ Realignment of Petit Lane to intersect with Shoal Line at right angle
- ▣ Realignment of Petit Lane to line up with Flamingo Boulevard
- o Conventional intersection with four way stop.
- o Roundabout at new intersection of Petit Lane/Flamingo Blvd and Calienta Street.
- ▣ Alternative safety improvement at Calienta Street and Shoal Line intersection.
- ▣ Relocation of existing sewage lift station on southeast corner of Calienta Street and Flamingo Boulevard.

**Cardno**





**Calienta Street Improvements Sidewalks, stormwater runoff, road improvements**

“This information is from a Public Information Workshop and may not be the latest information available

REVISIONS				CARDNO, INC. 380 PARK PLACE BOULEVARD, SUITE 300 CLEARWATER, FL 33759	HERNANDO COUNTY PUBLIC WORKS			SHEET NO. 1
DATE	DESCRIPTION	DATE	DESCRIPTION		ROAD	COUNTY	PROJECT NO.	
					CALIENTA ST	HERNANDO	19-RG0094/PH	

CONCEPTUAL PLAN (1)





Changes to  
 Flamingo  
 Blvd.,  
 Calienta St.,  
 and Petit  
 Lane

This information is  
 from a Public  
 Information  
 Workshop and may  
 not be the latest  
 information available

REVISIONS				HERNANDO COUNTY PUBLIC WORKS			SHEET NO.
DATE	DESCRIPTION	DATE	DESCRIPTION	ROAD	COUNTY	PROJECT NO.	
				CALIENTA ST	HERNANDO	19-RG0094/PH	2

CARDNO, INC.  
 380 PARK PLACE BOULEVARD, SUITE 300  
 CLEARWATER, FL 33759

CONCEPTUAL PLAN (2)



**Calienta Street,  
Sidewalks and  
Storm Water  
Improvements**



This information is from a Public Information Workshop and may not be the latest information available

REVISIONS				CARDNO, INC. 380 PARK PLACE BOULEVARD, SUITE 300 CLEARWATER, FL 33759	HERNANDO COUNTY PUBLIC WORKS			CONCEPTUAL PLAN (3)	SHEET NO. 3
DATE	DESCRIPTION	DATE	DESCRIPTION		ROAD	COUNTY	PROJECT NO.		
----	----				CALIENTA ST	HERNANDO	19-RG0094/PH		





**Calienta Street  
sidewalks,  
stormwater  
run off, and  
other  
improvements**

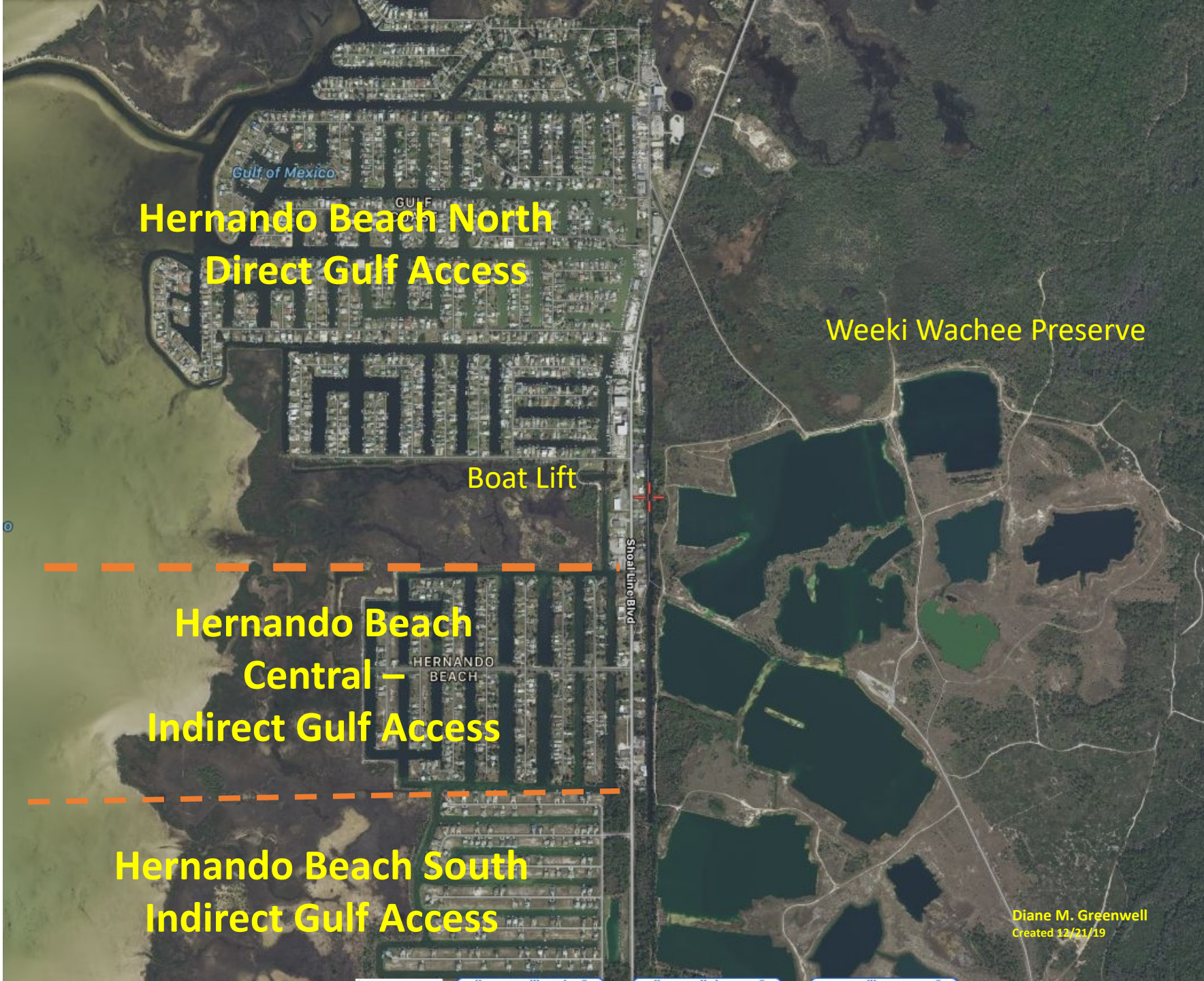
This information is from a Public Information Workshop and may not be the latest information available

REVISIONS				CARDNO, INC. 380 PARK PLACE BOULEVARD, SUITE 300 CLEARWATER, FL 33759	HERNANDO COUNTY PUBLIC WORKS			CONCEPTUAL PLAN (4)	SHEET NO. 4
DATE	DESCRIPTION	DATE	DESCRIPTION		ROAD	COUNTY	PROJECT NO.		
					CALIENTA ST	HERNANDO	19-RG0094/PH		









**Hernando Beach North  
Direct Gulf Access**

**Weeki Wachee Preserve**

**Boat Lift**

**Hernando Beach  
Central —  
Indirect Gulf Access**

**Hernando Beach South  
Indirect Gulf Access**

Diane M. Greenwell  
Created 12/21/19





# Commercial Marine CM-2

(All commercial  
Fishing Vessels over 26',  
Commercial  
Processing and/or Commercial  
Fishing Activity) must stay north  
of  
Flamingo Blvd.

Gulf of Mexico

GULF  
COAST

HERNANDO  
BEACH

Shoal Line Blvd

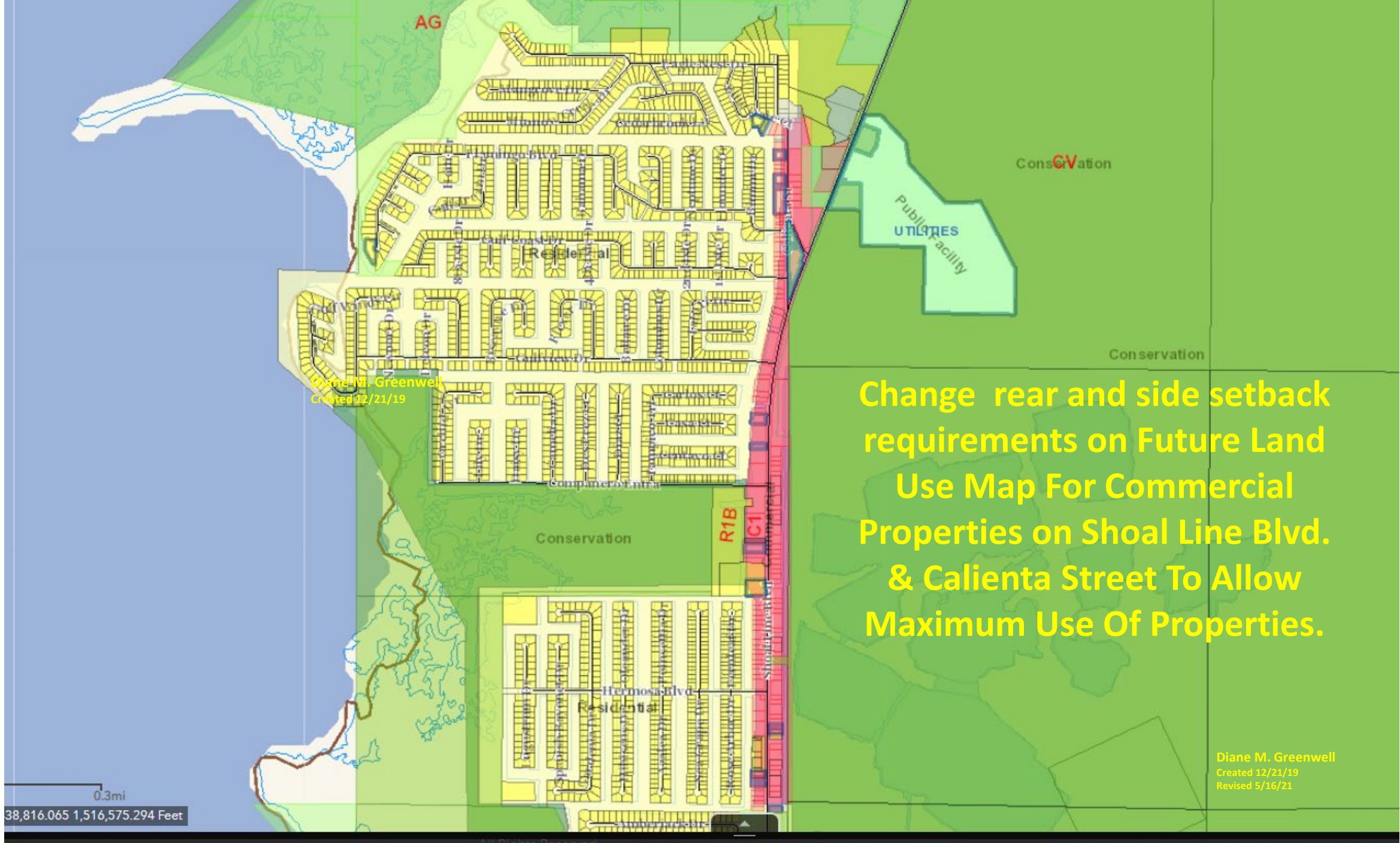
Diane M. Greenwell  
Created 12/21/19





**Commercial Recreational  
Charters CM-1  
Restricted size, usage,  
hours of operation**





AG

Conservation

Public Utilities

Conservation

Diane M. Greenwell  
Created 12/21/19

**Change rear and side setback requirements on Future Land Use Map For Commercial Properties on Shoal Line Blvd. & Calienta Street To Allow Maximum Use Of Properties.**

Conservation

R1B

C1

Hermosa Blvd Residential

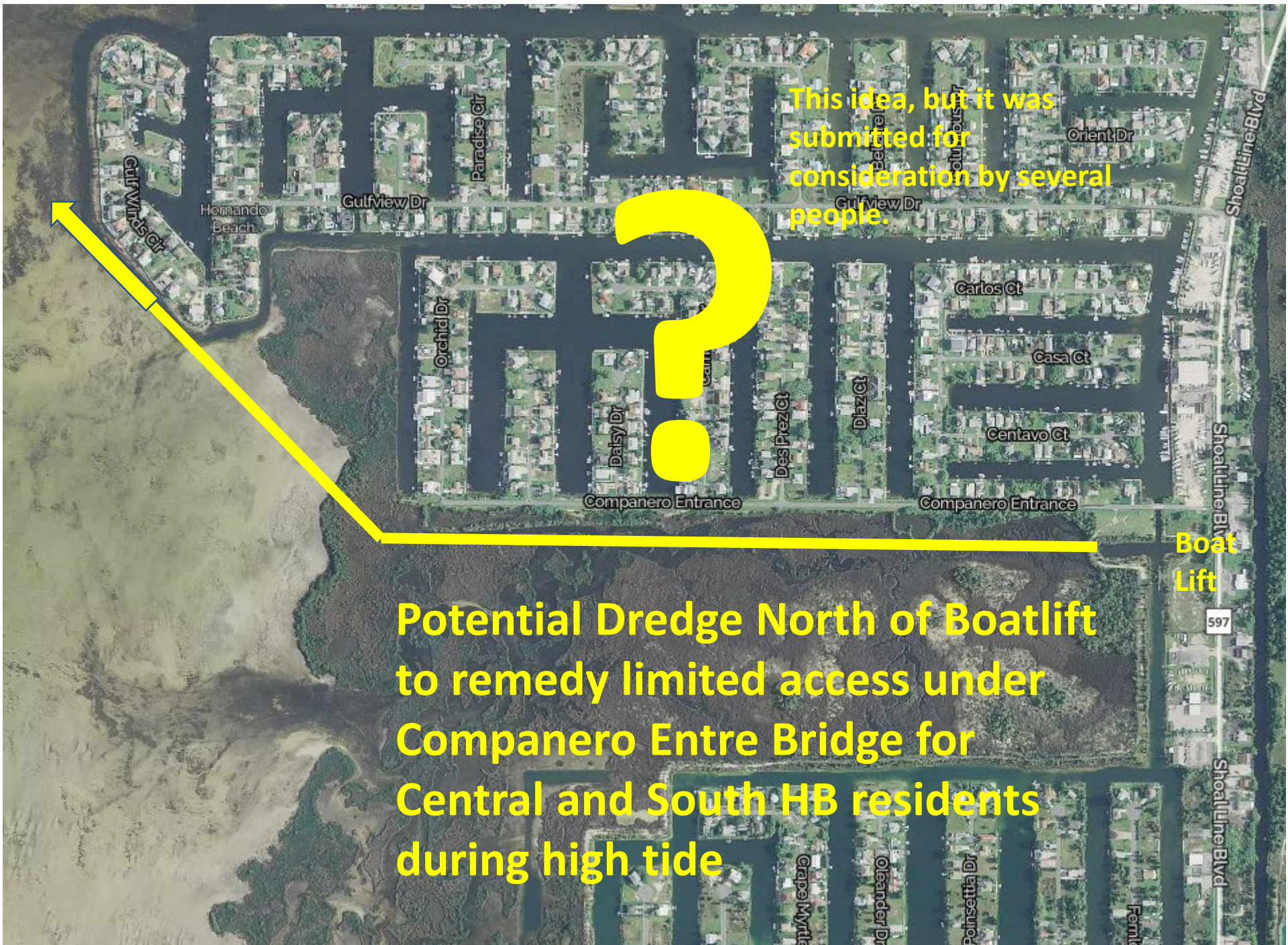
Shoal Line Blvd

0.3mi

38,816.065 1,516,575.294 Feet

Diane M. Greenwell  
Created 12/21/19  
Revised 5/16/21



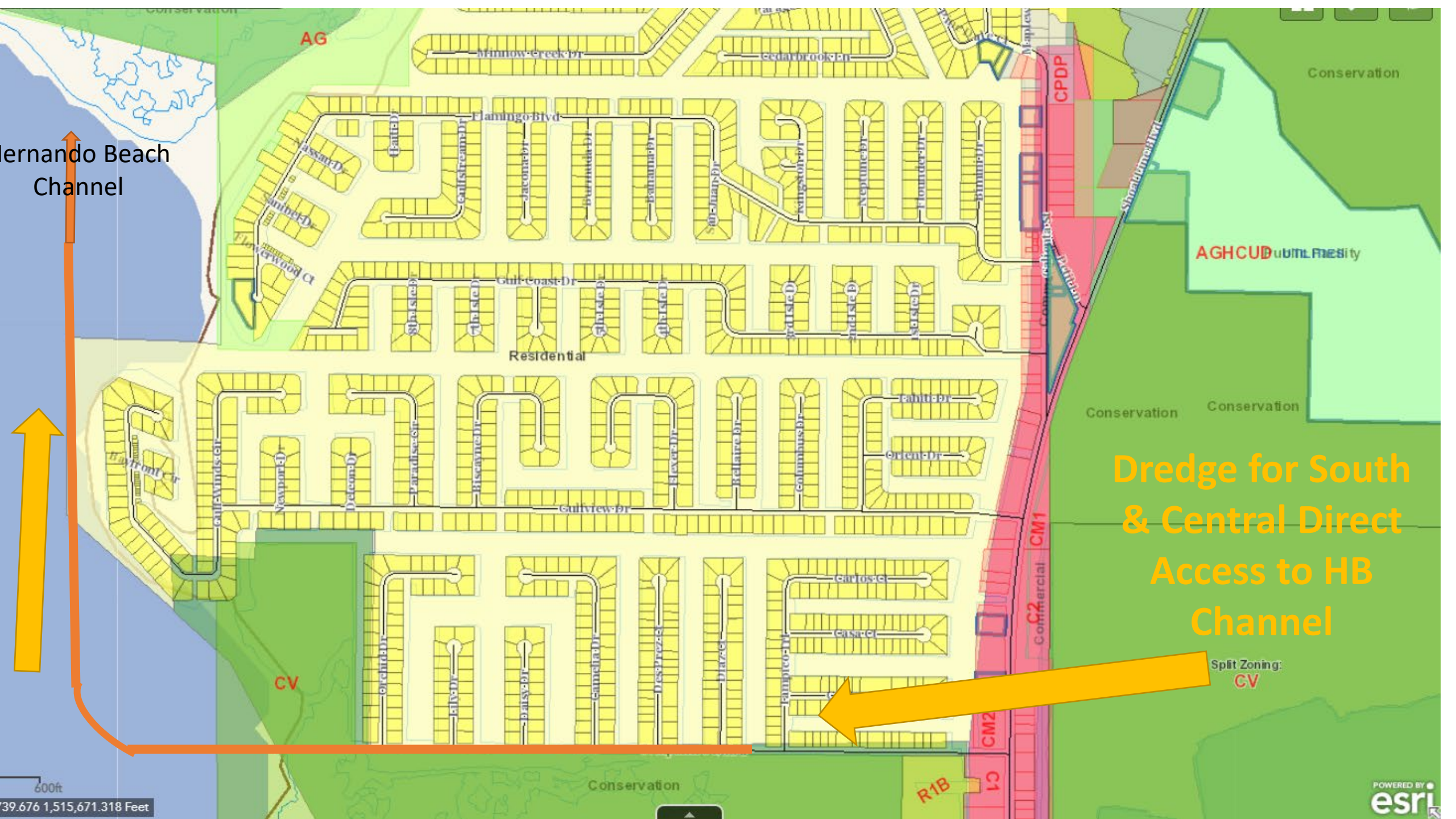


This idea, but it was submitted for consideration by several people.

Potential Dredge North of Boatlift to remedy limited access under Companero Entre Bridge for Central and South HB residents during high tide



Hernando Beach Channel



AG

Residential

CV

CPDP

AGHCUB

CM1  
CM2  
CM3

R1B

Dredge for South & Central Direct Access to HB Channel

Split Zoning: CV

600ft  
39.676 1,515,671.318 Feet

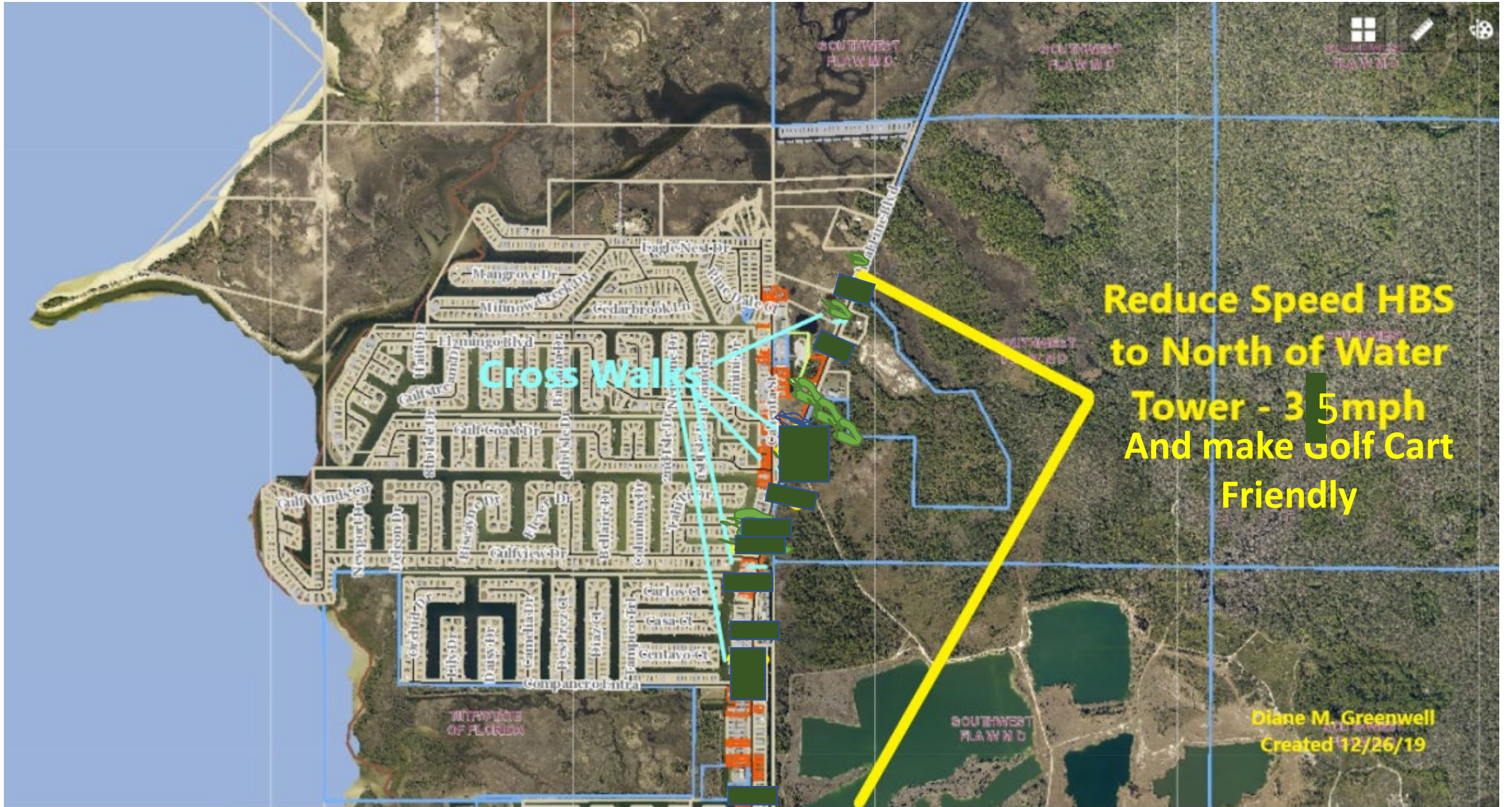
POWERED BY  
esri



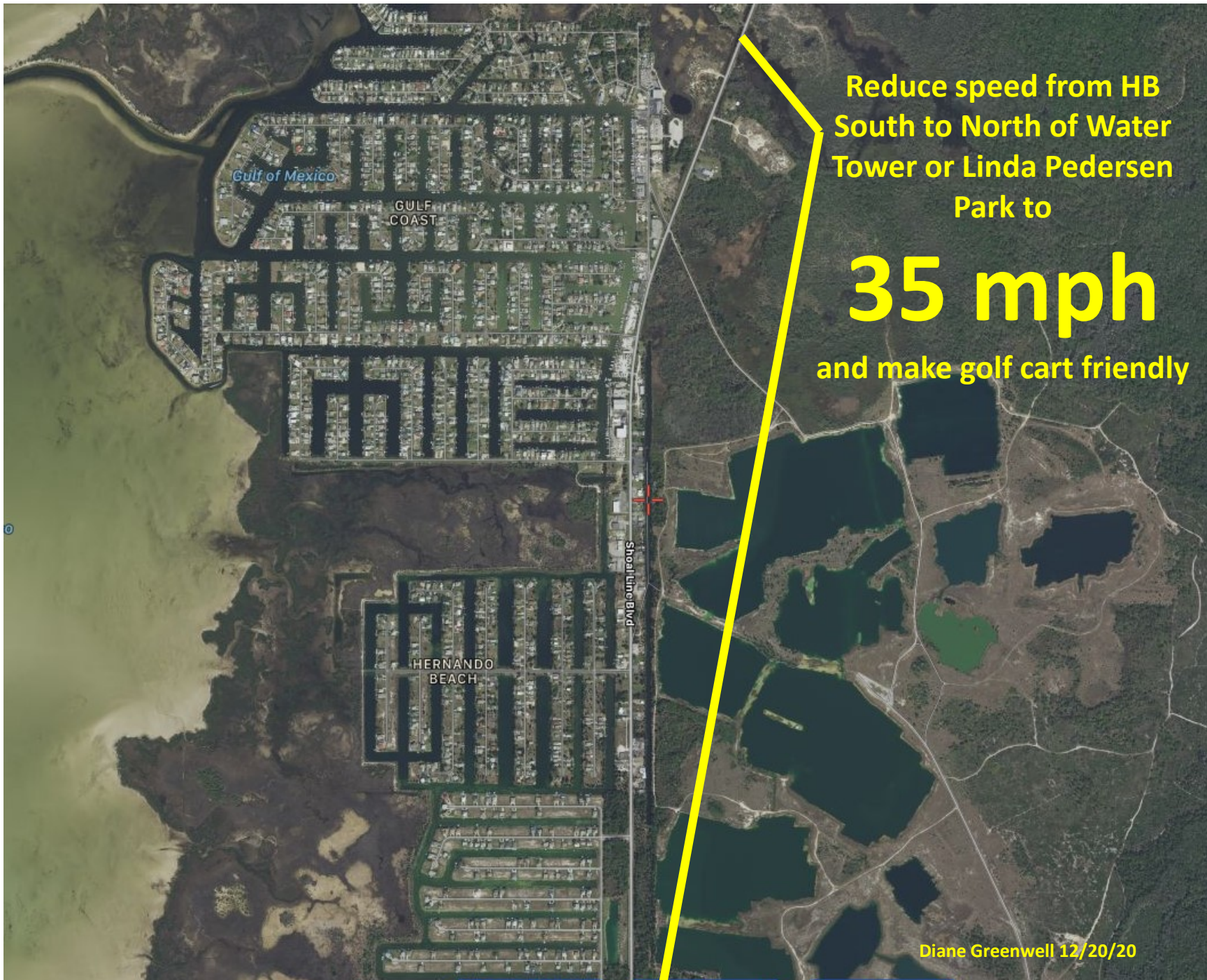
Cross Walks

Reduce Speed HBS  
to North of Water  
Tower - 35mph  
And make Golf Cart  
Friendly

Diâne M. Greenwell  
Created 12/26/19







Reduce speed from HB  
South to North of Water  
Tower or Linda Pedersen  
Park to

# 35 mph

and make golf cart friendly



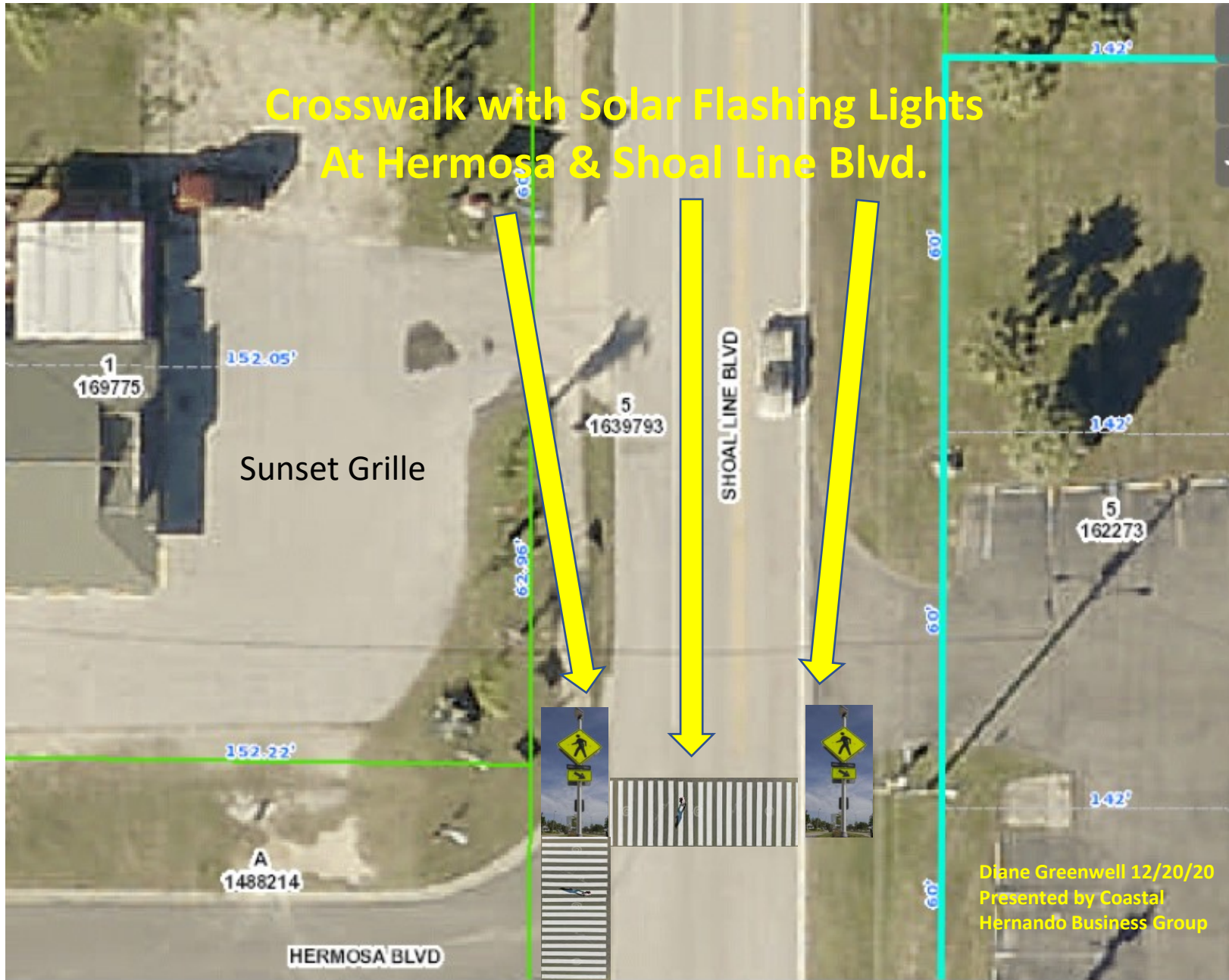
# Rumble Strips



Gunter Woog  
07-14-2020



# Crosswalk with Solar Flashing Lights At Hermosa & Shoal Line Blvd.



Diane Greenwell 12/20/20  
Presented by Coastal  
Hernando Business Group





Crosswalk with Flashing Lights at Brian's & Shoal Line Blvd. & Sidewalk on East side of Shoal Line Blvd.

Diane Greenwell 12/20/20  
Presented by Coastal  
Hernando Business Group





Crosswalk with Flashing Lights at Dollar General & Shoal Line Blvd. & Sidewalk on East side of Shoal Line Blvd.

Dollar General

Silver Dolphin

Diane Greenwell 12/20/20  
Presented by Coastal Hernando Business Group



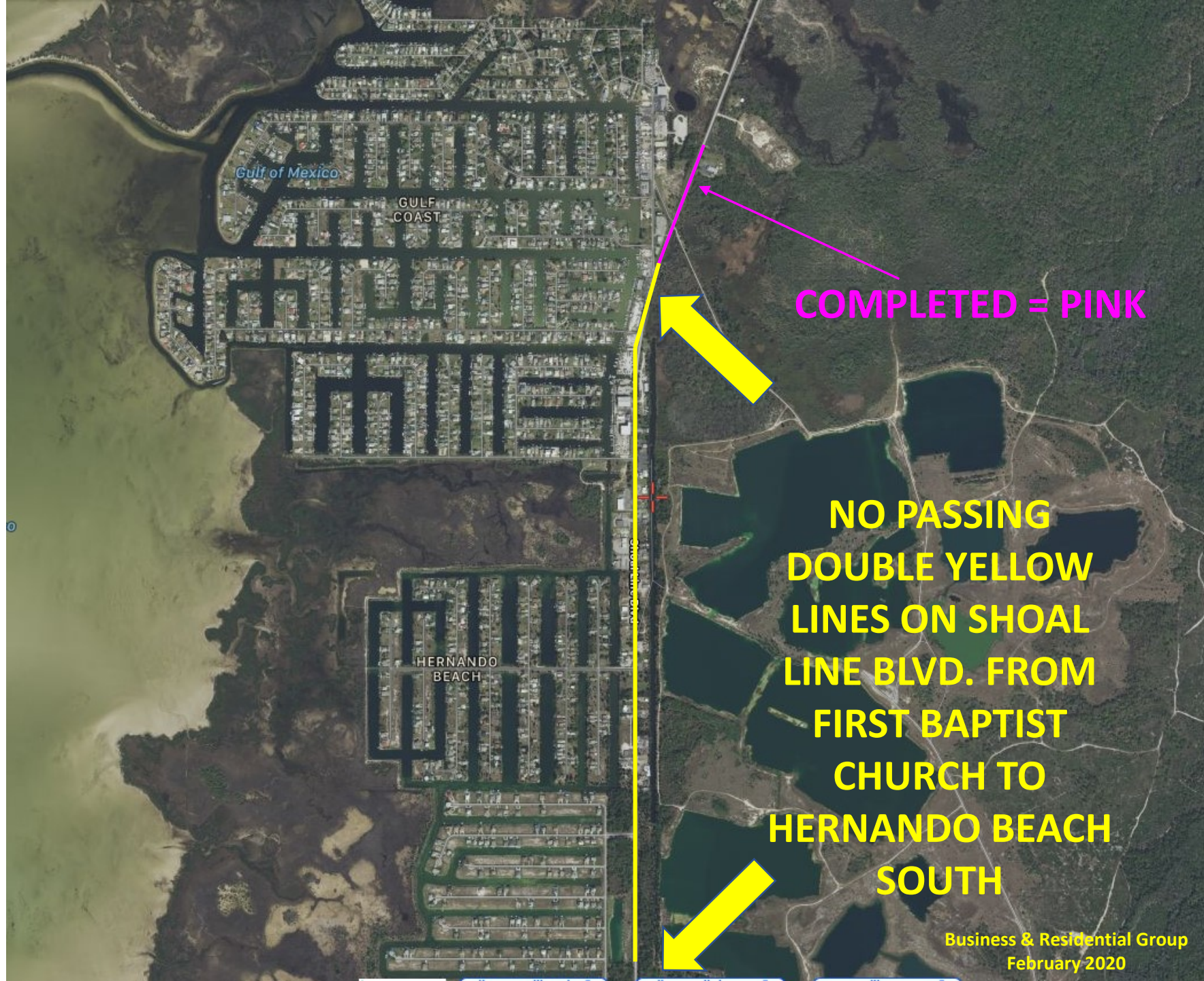


**Sidewalk and Crosswalk with Flashing Lights at ZigZag's & Calienta Street on West side of Calienta Street and sidewalks continuing on the East side of Calienta from ZigZag's to Boat Ramp**









Gulf of Mexico

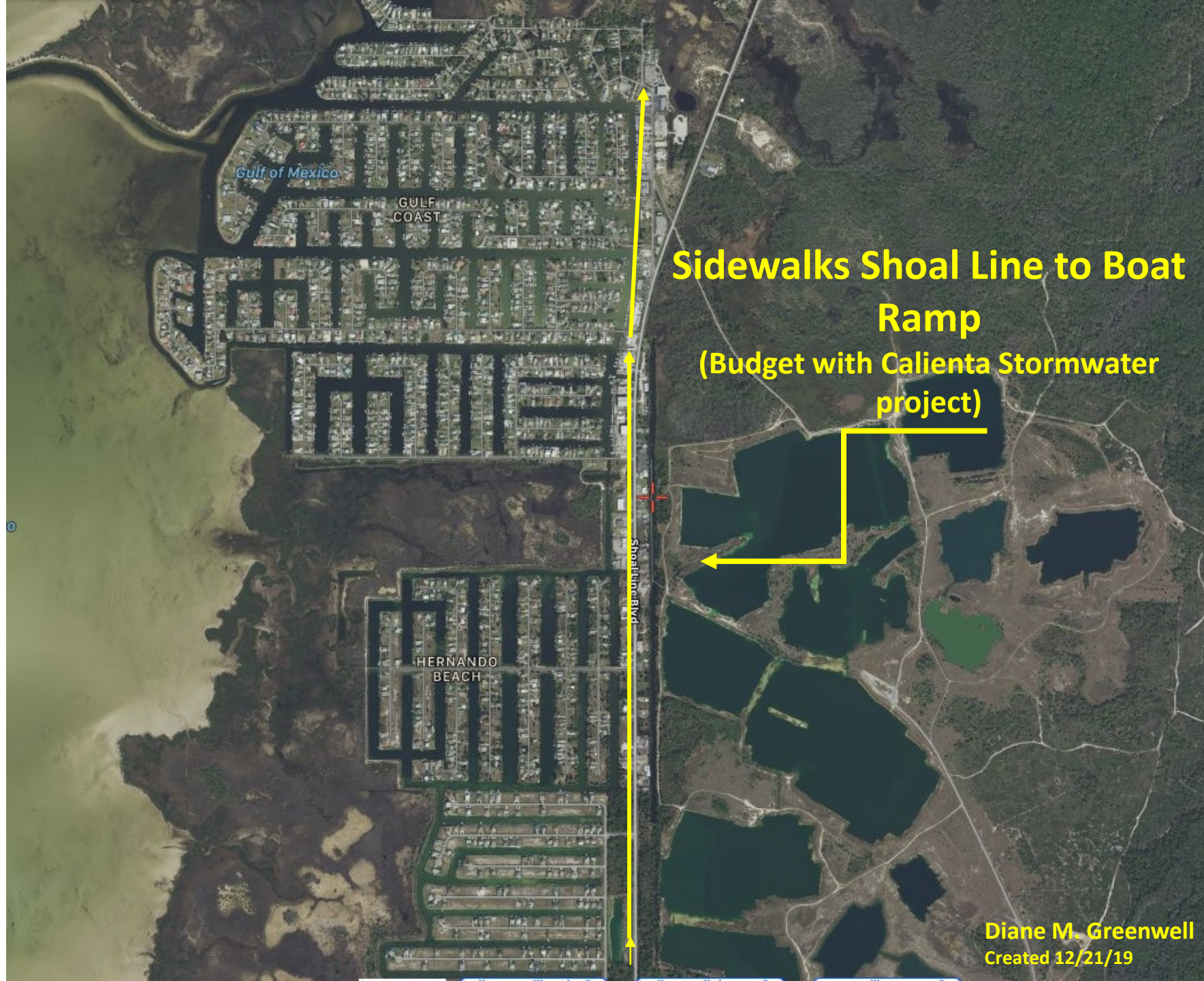
GULF COAST

HERNANDO BEACH

COMPLETED = PINK

NO PASSING  
DOUBLE YELLOW  
LINES ON SHOAL  
LINE BLVD. FROM  
FIRST BAPTIST  
CHURCH TO  
HERNANDO BEACH  
SOUTH





**Sidewalks Shoal Line to Boat Ramp  
(Budget with Calienta Stormwater project)**





Gulf of Mexico

GULF COAST

HERNANDO BEACH

Shoal Line Blvd

**Crepe Myrtles or other Florida native flowering shrubs along Shoal Line Blvd. for Color**





Create an Information Center at Linda Pederson Park and an addition to the Coastal Mural Trail to include the Ghost Ship, Scalloping, Diving, Snorkeling, Ben Dickson Reef, Kayaking, Wildlife – On the North Side a sign “Welcome to Hernando Beach – On the South Side a sign “Thank you for visiting Hernando Beach”. Grants, private fund raisers, volunteers, over a five-year period to complete.  
(<http://mobile.hernandobeachcommunity.com/follow-the-coastal-art-trail.shtml>)



Diane Greenwell 1/14/2020  
Revised 5/16/21

The Mural would be the focal point of Hernando Beach and all that our community offers. Colorful, artsy, information center, community center, and meeting facility for our community.





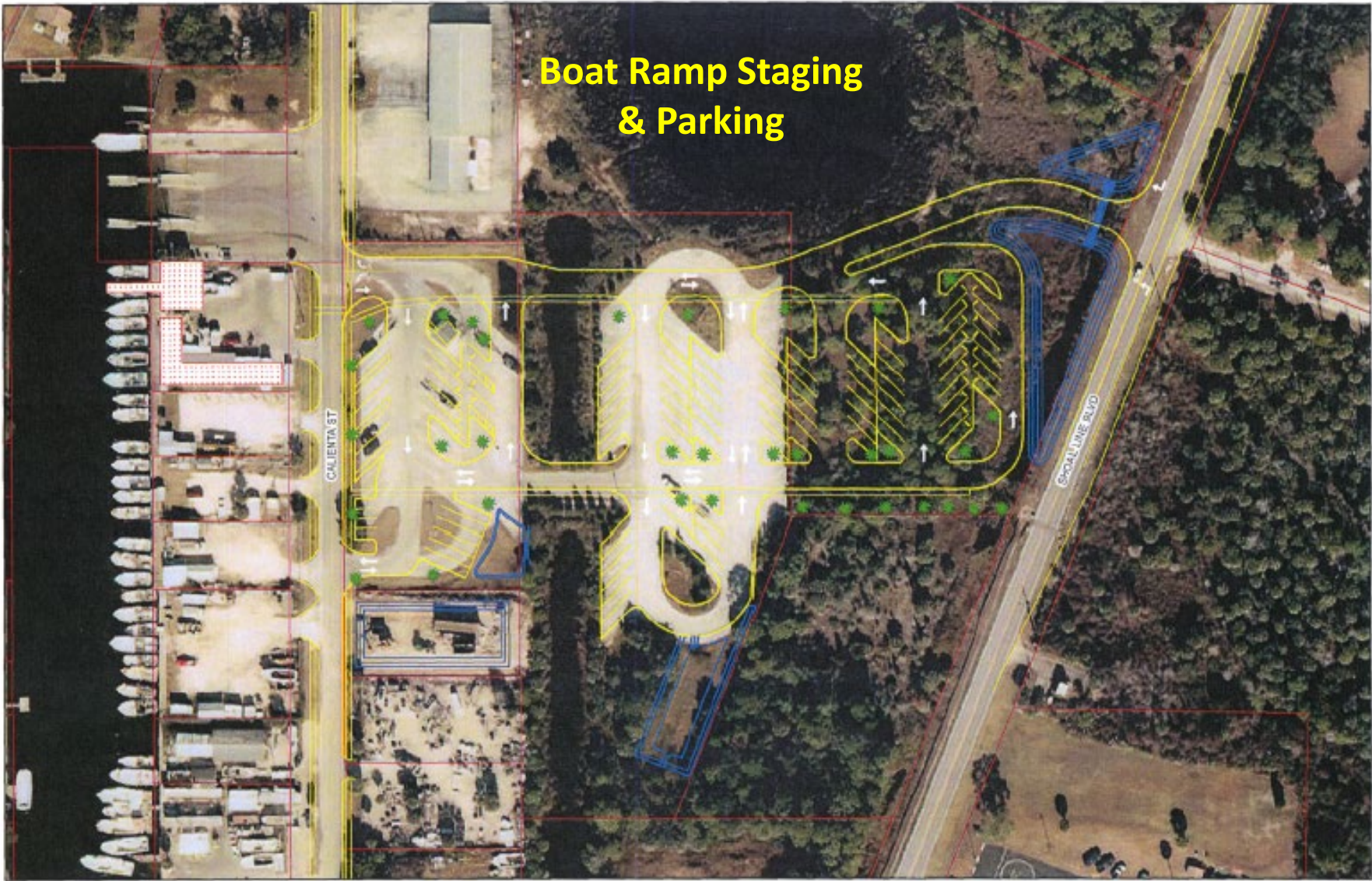
**Dedicate the 56 acre  
Water Tower Property  
To Hernando Beach for  
Use as a park: Bocce  
Ball, Dog Park, Volley  
Ball, Parking for Preserve &  
Boardwalk**





**Education Center:  
Nature Coast Aquatic Preserve Headquarters,  
FWC, DEP, Waterways, Sheriff's sub-station  
& Marine Research Center With University of  
Florida For Water Testing, Weather Monitoring,  
Education, and Training**





**Boat Ramp Staging  
& Parking**

**Hernando Beach Boat Parking  
Proposed Expansion**



Scale - Not To Scale  
 Mapped by - Dept. of Public Works/Engineering Div.  
 Map Date - 5/15/2016



Hernando County Geographic Information System (GIS)  
 Standard Legal Disclaimer

"The information in this database or as represented upon a digital or hard copy thereof is compiled and/or generated for internal County purposes, is not necessarily official, and may or may not reflect the most recent changes. Accordingly, some critical information is at the user's own risk, and Hernando County hereby disclaims any liability for claims, damages, injury, or loss of any kind resulting from use of, or reliance upon, the information herein for any purpose whatsoever."

*5/27/16 Brian Malmberg, Mark Tuttleman, Fred O'Leary, Public Works Project Meeting,*



**Boardwalk  
Behind Commercial  
Businesses on East Side of Shoal  
Line Blvd. Connecting with  
Boardwalk to Linda Pedersen  
Park**



Diane M. Greenwell  
Created 12/21/19





## Boardwalk

From Preserve to  
Linda Pedersen Park  
or added Scenic Walks, Biking,  
And additional trails, kayaking  
(see additional slide)



Hernando Beach Vision Plan  
10/25/19



Boardwalk to Jenkins Creek

Trail from last cross over to Boardwalk

Last Cross Over to Preserve

Diane M. Greenwell  
Created 10/25/19  
MAP 2



Hernando Beach Vision Plan  
10/25/19



Boardwalk from Water Tower to  
Jenkins Creek – 1 mile

Diane M. Greenwell  
Created 10/25/19  
MAP 3





NOT TO SCALE

All data prepared by this office is for use in local government and planning only. All data is subject to change without notice. All points and locations are based on the 2011 USGS data.



# Hernando Beach Hernando County, Florida

Legend

2021-02-17 Roundtable Proposal







Gulf of Mexico

GULF COAST

## Trolley Bus

Scenic Highway (Shoal Line Blvd)

Pine Island

Bay Port

Hernando Beach

Weeki Wachee

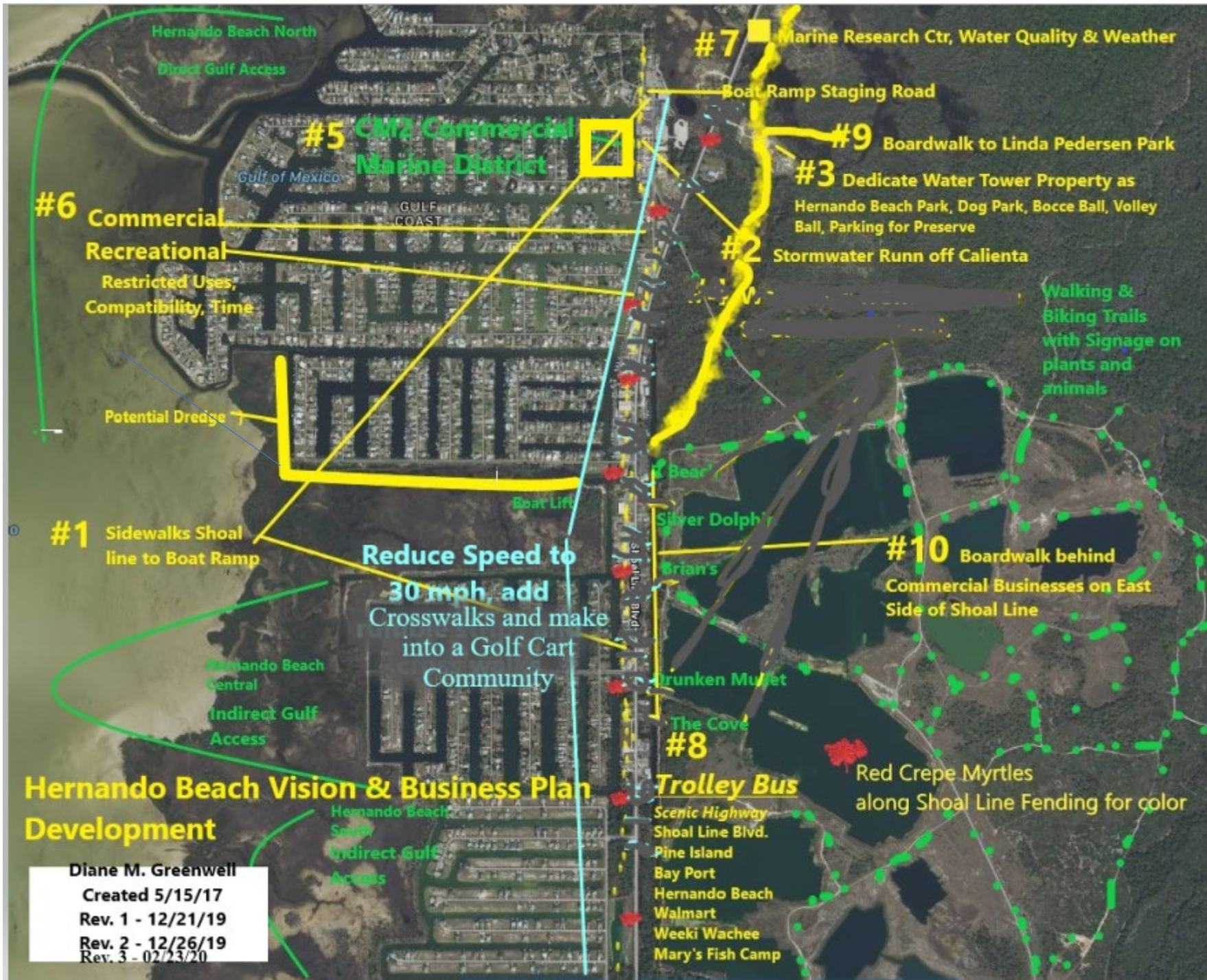
Mary's Fish Camp

Shoal Line Blvd

HERNANDO BEACH

Diane M. Greenwell  
Created 12/21/19

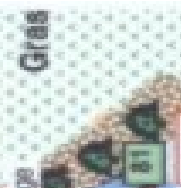
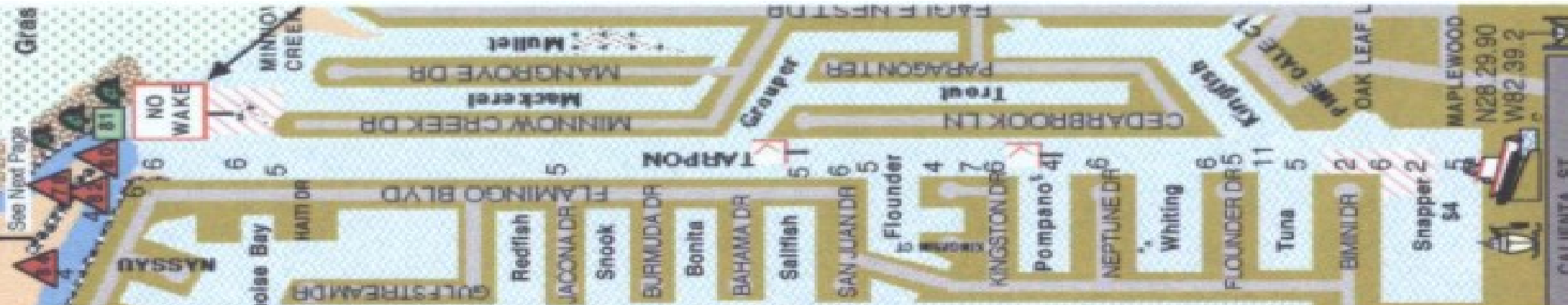
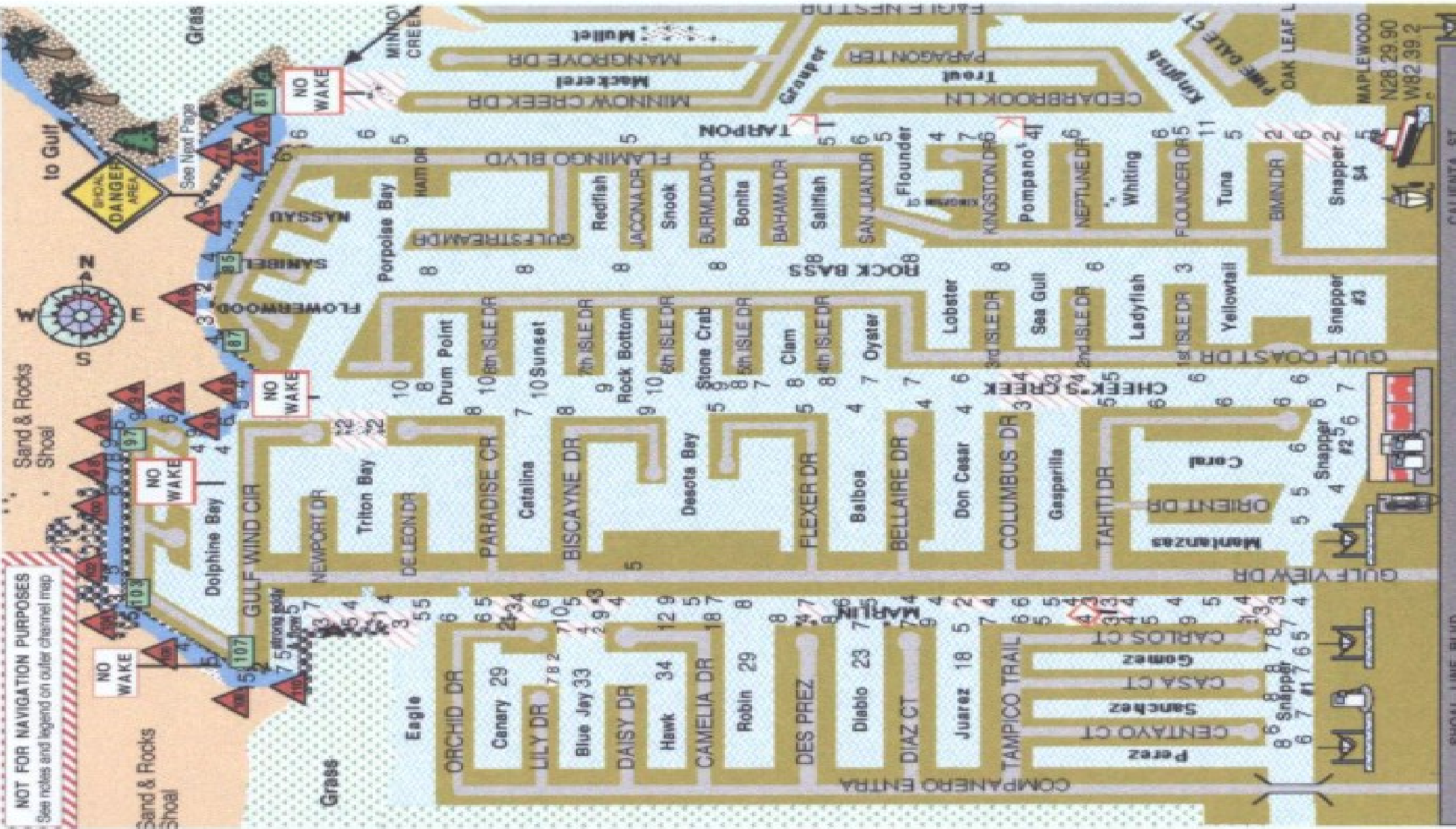
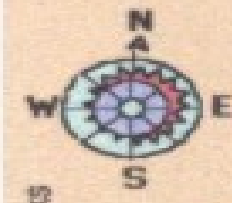




Diane M. Greenwell  
 Created 5/15/17  
 Rev. 1 - 12/21/19  
 Rev. 2 - 12/26/19  
 Rev. 3 - 02/23/20



**NOT FOR NAVIGATION PURPOSES**  
See notes and legend on outer channel map



Sand & Rocks Shoal

Sand & Rocks Shoal

Grass

Grass



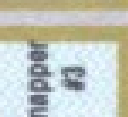
SHOAL LINE BLVD



SHOAL LINE BLVD



SHOAL LINE BLVD



SHOAL LINE BLVD



SHOAL LINE BLVD



SHOAL LINE BLVD



2-7-07  
hand out

## HERNANDO BEACH CANAL WATER DEPTHS

	DEPTH	CANAL NAME	LONGS & LATS	
1	5'	Tarpon Canal	28-29-998	82-39-124
2	4.4'	Tarpon Canal	28-39-999	82-39-426
3	6'	Tarpon Canal	28-29-996	82-39-686
4	3.7'	Tarpon Canal	28-39-006	82-39-889
1	8'	Rock Bass	28-29-821	82-39-765
2	8'	Rock Bass	28-29-822	82-39-537
3	6.1'	Rock Bass	28-29-819	82-39-226
4	4'	Rock Bass	28-29-814	82-39-103
1	8'	Cheeks Creek	28-29-701	82-39-846
2	9.1'	Cheeks Creek	28-29-702	82-39-579
3	5'	Cheeks Creek	28-29-698	82-39-272
4	6'	Cheeks Creek	28-29-701	82-39-040
5	5'	Cheeks Creek	28-29-610	82-39-035
1	11'	Marlin Canal	28-29-521	82-39-517
2	4'	Marlin Canal	28-29-517	82-39-788
3	9'	Marlin Canal	28-29-514	82-39-644
4	6.5'	Marlin Canal	28-29-514	82-39-541
5	8'	Marlin Canal	28-29-513	82-39-458
6	8'	Marlin Canal	28-29-511	82-39-403
7	5.5'	Marlin Canal	28-29-511	82-39-319
8	4.7'	Marlin Canal	28-29-595	82-29-225
9	4'	Marlin Canal	28-29-512	82-39-110

Info Collected on 2-2-07