

Press Release for Change to the 17' rule:

The United States Department of Labor has made a change to the Federal Code of Regulations regarding crane safety. Concrete pumps are specifically excluded from the new regulations. In spite of this, the hazards for cranes and pumps are similar, including booming into power lines. Like cranes, the number one cause of fatal accidents with pumps is electrocution.

Accordingly, the American Concrete Pumping Association has decided to adopt the crane regulations regarding safety near power lines.

We are standardizing for simplicity: one number to remember for pumps or cranes. There was no danger to pumpers who maintained the 17 foot rule. Because of that, we will update our safety information only as it is reprinted. It may take a year or two before all of the ACPA's published material reflects the new rule.

The new ACPA rule is this:

In all situations, you must maintain a minimum clearance of 20' (twenty feet) from energized, un-insulated, current-carrying power lines with voltages from 0.1 kV to 350 kV (100 volts to 350,000 volts). For voltages above 350 kV, you must maintain a minimum clearance of 50' (fifty feet). See the Figures below for help in determining the types of lines corresponding to the minimum clearance distances.

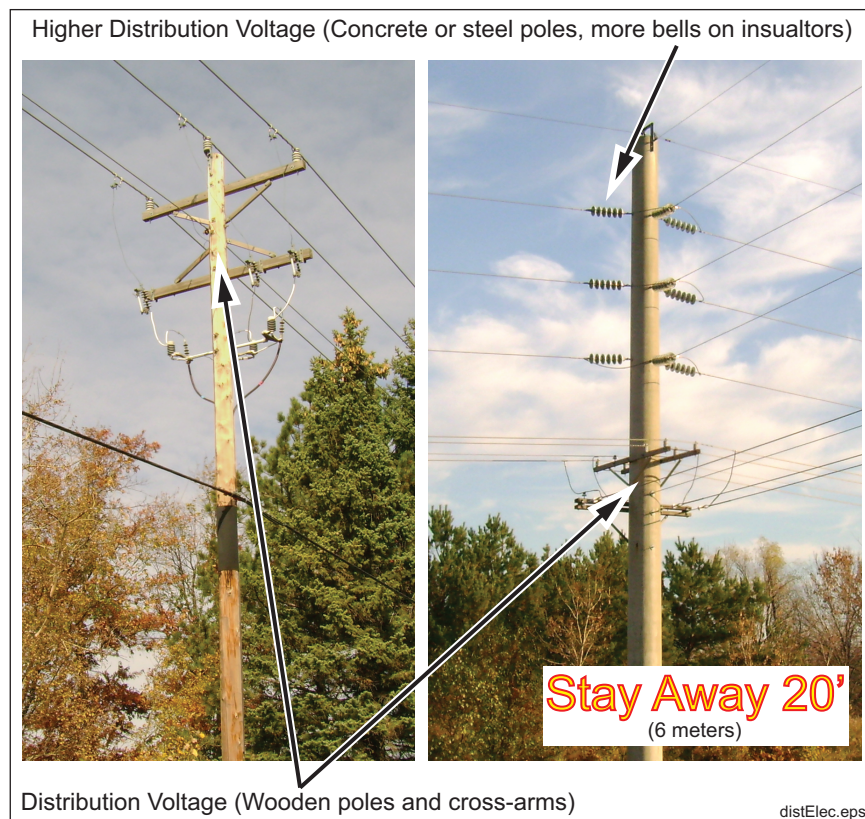


Figure 1. Stay 20 feet away from these wires



Figure 2. Stay 50 feet away from these wires.

There are situations where, with proper preplanning with the owner of the power utility and others on the job, cranes are allowed to decrease the above distances. Experience has taught us that pump operators are rarely, if ever, included in those preplanned meetings. Accordingly, the ACPA believes that publishing only the 20 foot rule and the 50 foot rule will maximize safety for pump operators and others near the pump.