

2019 STWEC Board of Directors

2019	STWEC Board of Directors
Ron Keown Shasta	President
Sam Mudd Tehama	Vice President
Martin Spannaus Tehama	Treasurer
Shane Overton Shasta & Tehama.	Secretary
Larry Solberg Shasta	Director at Large

[Congratulations and Welcome to our newly Elected Board Members!](#)

[Shane Overton](#)

Shane Overton is currently employed by Driscoll's, Inc. as the Senior Operations Manager for the McArthur and Red Bluff Nurseries. Shane has worked for Driscoll's since 2011 and previously at Zacky Farms in the Fresno area. Driscoll's farms include 1,300 acres in the McArthur area where they grow 200 acres of field grown strawberries, 100,000 blackberries in pots, 6,000 raspberries in pots, and 1,000 blueberries in pots. In addition to the fruit crops they also produce alfalfa, grain hay, grain seed, and maintain cattle grazing pasture. At the Red Bluff nursery they produce 200 acres of strawberries as well as 500,000 tray plants. The McArthur nursery is a member of the North Eastern California Water Association or NECWA. Shane and his wife Hannah have 3 boys; Rhett – 10, Rhys – 8, and Rorke – 6. In their free time the family likes to camp, fish, and BBQ.

[Martin Spannaus](#)

Martin Spannaus has worked in the forestry profession as a Timber Faller and Equipment Operator for 22 years. He entered into Agriculture as a mechanic in the walnut industry and

served Tehama, Butte, Glenn and surrounding counties as an Ag. Equipment Dealer. He has also worked for the City of Corning beginning as their Heavy Equipment Mechanic and retiring as the City of Corning Fire Chief. Martin and his wife Joann own a farm/ranch west of Corning where they grow Alfalfa, Grain Hay and have a 30 Cow/Calf Angus operation helping to preserve agriculture and the natural resources. He also serves on the Tehama County Farm Bureau as a Director, and is currently Second Vice President. Martin also sits on the Tehama County Oak Woodlands Advisory Committee and the Tehama County Cattlemen's. For fun Martin and Joann love to hunt, fish and show their four grandchildren how to work on the farm.

Member Notifications

Coming Soon:

Sediment and Erosion Control Training, October 2019. Tentative location is Cottonwood, CA. Call STWEC for more information.

Update:

Nitrogen Management Self-Certification Continuing Education Program Requirements:

- NMP Self-Certified growers must complete three (3) hours of Continuing Education Units (CEUs) over a three-year period to maintain their certification. These CEUs are due by January 2021.
- A comprehensive schedule of continuing education courses can be found on the CURES website at www.curesworks.org/cecourses/

STATE WATER EFFICIENCY AND ENHANCEMENT PROGRAM (SWEEP) GRANT OPPORTUNITY COMING SOON!

- ◆ Receive up to \$100,000 to improve your on-farm water and energy efficiency through the California Department of Food and Agriculture's SWEEP Grant Funding.
- ◆ Grant Open Fall Enrollment Period and Workshop to be announced.
- ◆ Need help with your proposal? Contact Kevin at the Resource Conservation District of Tehama County 530-727-1297.

TEHAMA COUNTY GROUNDWATER SUSTAINABILITY AGENCY

& CURRENT GROUNDWATER CONDITIONS

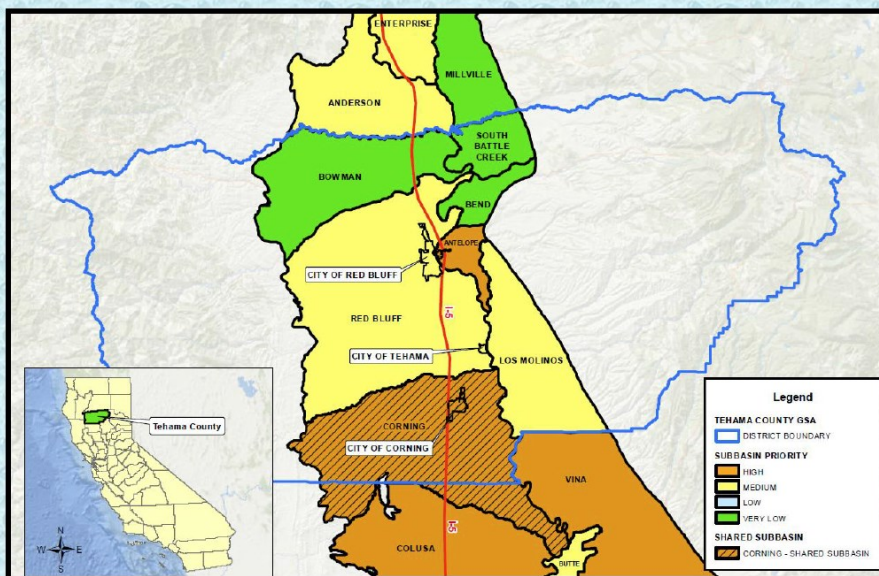
*The following information was presented to STWEC members at the May 2019 STWEC Annual Meeting by Ryan Teubert-Tehama County Flood Control and Water Conservation District. While STWEC is not directly involved with the Sustainable Groundwater Management Act (SGMA) process, STWEC's concern is water quality. Therefore, STWEC continues to observe the process in order to represent our members' interest.

What is SGMA's purpose?

- Promote sustainable management of groundwater basins
- Enhance local management of groundwater, state to step in if necessary
- Improve data collection and understanding of groundwater resources and management
- Avoid or minimize impacts for land subsidence



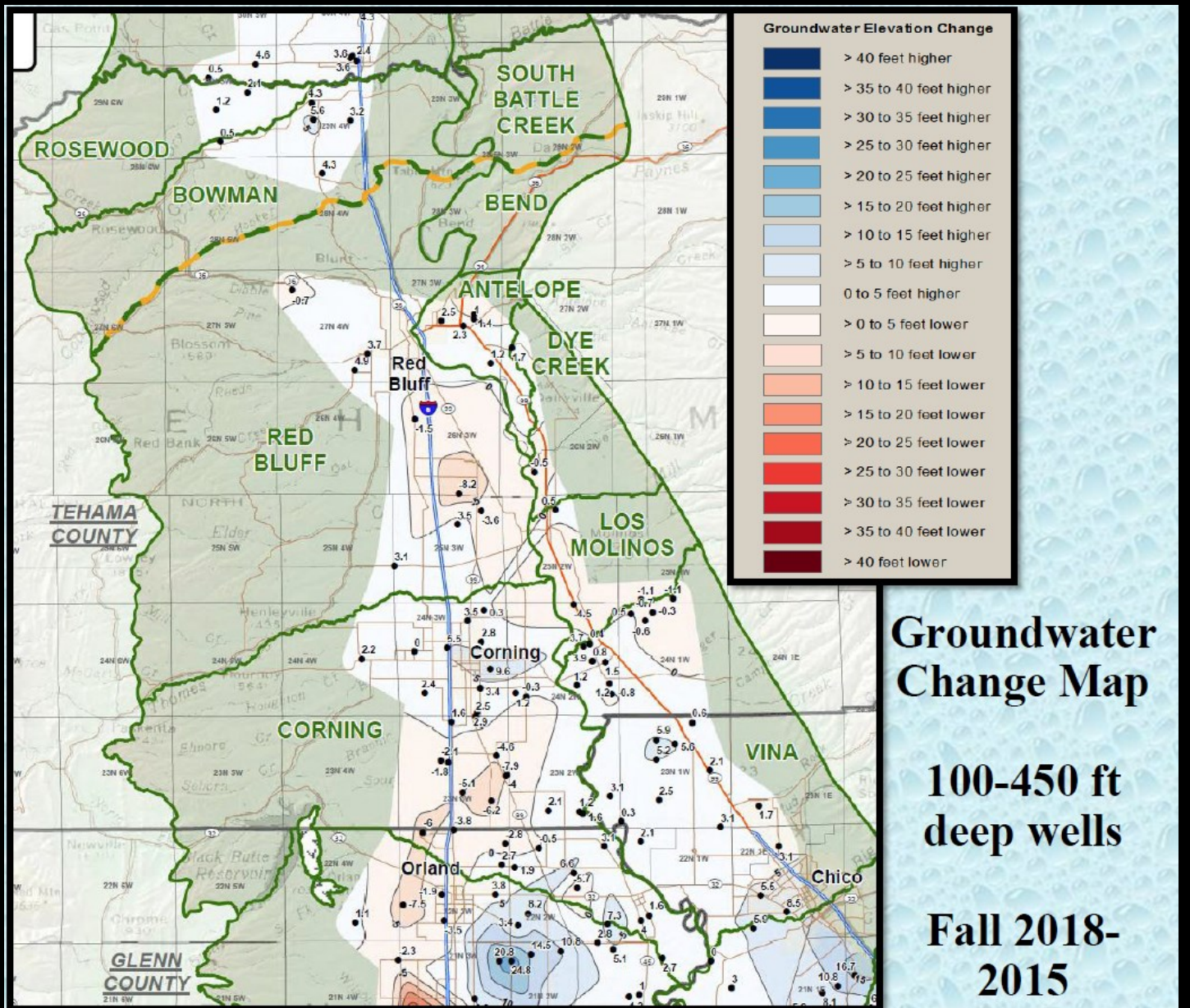
Tehama County Groundwater Sustainability Agency



➤ District Recognized as Exclusive GSA
in February 2016

➤ District Awarded 1.5 Million Dollars
for Groundwater Sustainability Plan
Development in 2018 for the:

- Bowman Subbasin
- Red Bluff Subbasin
- Antelope Subbasin
- Los Molinos Subbasin



Ground Water Sustainability Agencies are currently in the planning stage. They are working to prevent the following six undesirable results.

- ◆ Surface Water Depletion
- ◆ Reduction of Storage
- ◆ Degraded Water Quality
- ◆ Seawater Intrusion (not of concern in Shasta and Tehama Counties)
- ◆ Land Subsidence (occurs when large amounts of groundwater have been withdrawn from certain types of rocks such as fine-grained sediments)
- ◆ Lowering Groundwater Levels



Surface Water
Depletion



Reduction
of Storage



Degraded
Quality



Seawater
Intrusion



Land
Subsidence



Lowering
GW Levels

Message from the President

2019 President's Summer Message,

First of all, thank you to all our long-term members, many of whom have been in our coalition from the inception of the Irrigated Lands Regulatory Program mandated upon us all by the State Water Resources Control Board. Secondly, I wish to welcome our new members who are now in compliance with the Irrigated Lands Regulatory Program (ILRP), Waste Discharge Order. We anticipate quite a few new members in the near future due to the Central Valley Regional Water Board's enforcement efforts to ensure Ag. wastewater discharge compliance in Shasta and Tehama counties.

STWEC's mission is to assist our members in meeting ILRP rules which seem to expand every year. Our goal is to show that agriculture is doing everything possible to protect our precious water resources and ensure clean water for all beneficial uses including good quality drinking water.

Please welcome our two newest board members; Shane Overton and Martin Spannaus. Thank you both for stepping up to help provide our members with the most cost efficient way to meet ILRP requirements.

I'm happy to see that our summer has been relatively mild and we are blessed to have ample water supplies in our two counties. Shasta Lake registered only 21.42 feet below full pool on August 8th. Nothing short of amazing! I wish that you all have a great harvest of whatever your crop genre, and have a safe and fire-less summer as we approach the fall season.

I enjoyed seeing and meeting many of you at our annual May meeting and please remember that members are always welcome to attend our regular bi-monthly board meetings held the second Wednesday of every odd month at 2 Sutter Street Red Bluff, CA 96080.



Ron Keown,
President STWEC Board of Directors



Shasta Tehama Watershed Education Coalition

PO Box 933
Red Bluff CA 96080

Phone: 530-527-4208

Up Coming Board Meeting:

Bi-Monthly Meeting

Wednesday, September 11, 2019 at 8 am | 2 Sutter Street | Red Bluff, CA 96080