

DRAFT ONLY

JABIRU ENGINE PARTS BOOK



5100 SERIES

Jabiru Aircraft Pty Ltd ACN 010 910 077

PO Box 5186 Bundaberg

Australia 4670

Australia: Phone 07 4155 1778 Fax 07 4155 2669

International: Phone + 61 7 4155 1778 Fax + 61 7 4155 2669

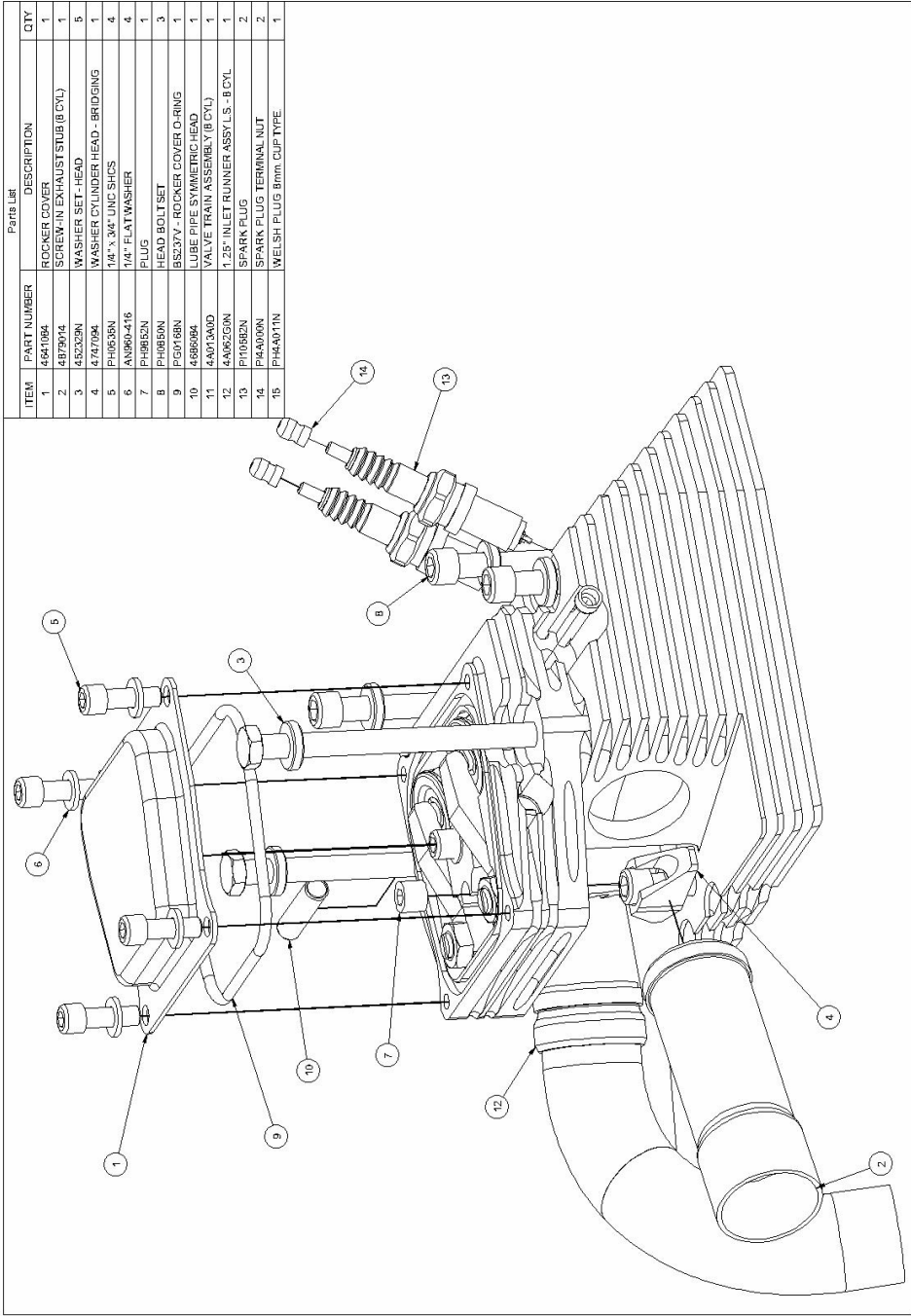
Email: info@jabiru.net.au Web: www.jabiru.net.au



5100 ENGINE PARTS BOOK

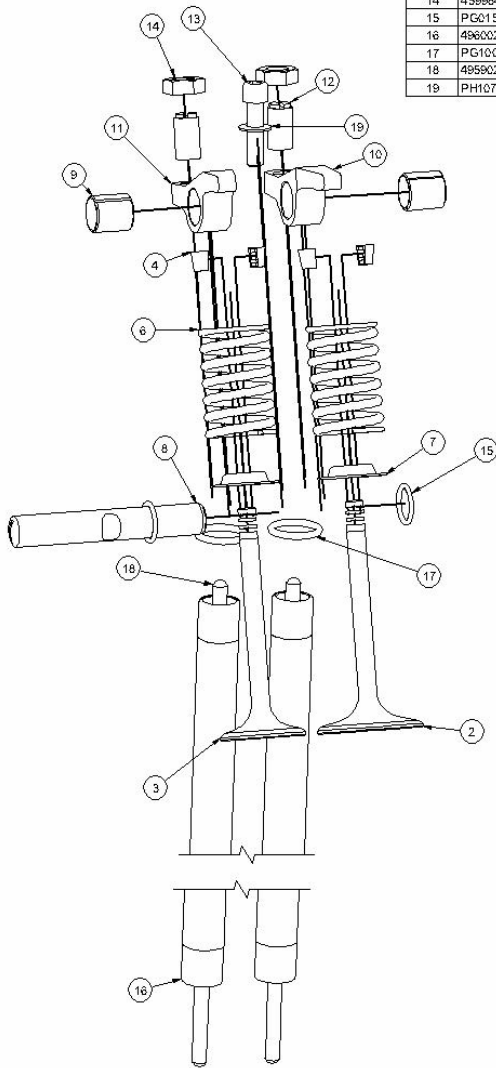
Engine Parts Catalogue Index

| Section | Description |
|----------------|-----------------------------------|
| A | Cylinder Head |
| B | Valve Train |
| C | Conrod Piston and Barrel |
| D | Crankshaft Crankcase and Camshaft |
| E | Gear Box Assembly |
| F | Flywheel and Ignition System |
| G | Starter Motor |
| H | Breather, Dipstick & Sump |
| I | Induction System |
| J | Oil Pump System |

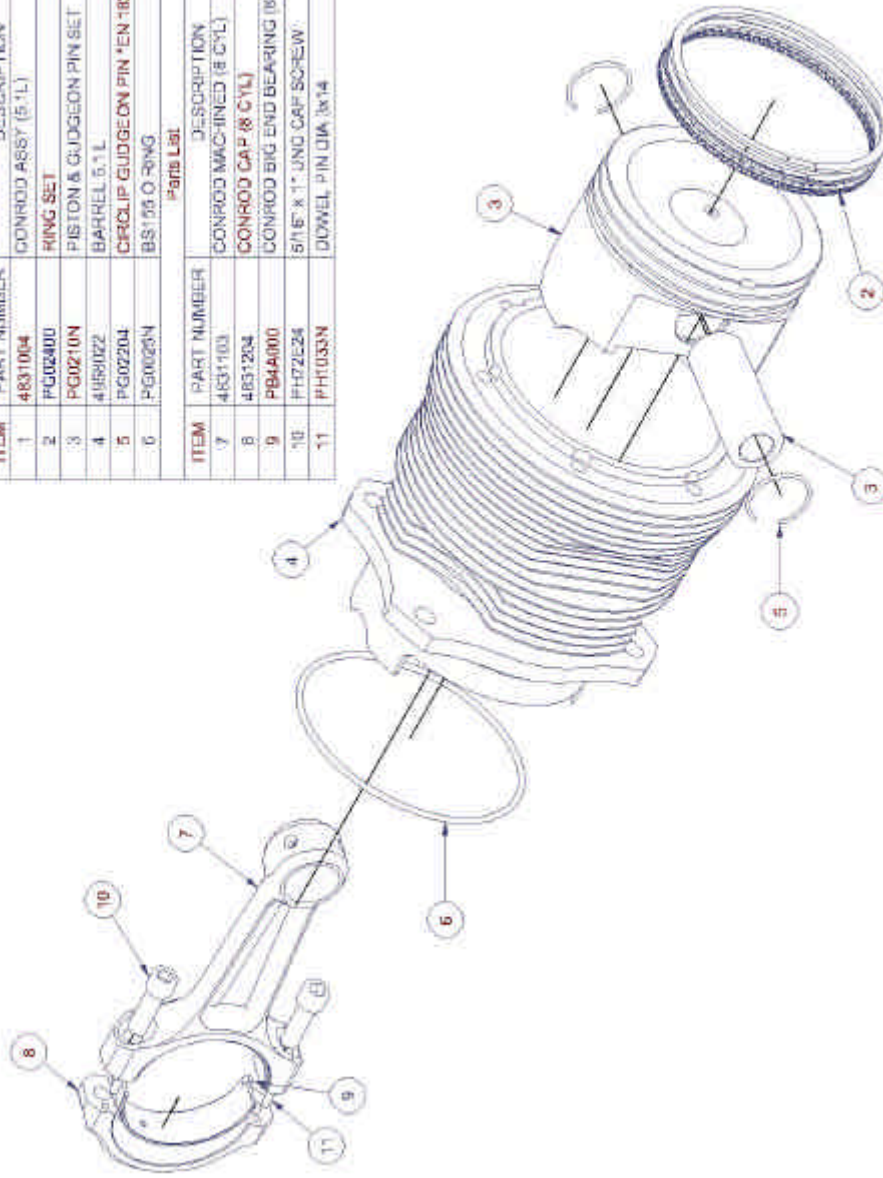


| Parts List | | | |
|------------|-------------|--------------------------------------|-----|
| ITEM | PART NUMBER | DESCRIPTION | QTY |
| 1 | 4841894 | ROCKER COVER | 1 |
| 2 | 4879014 | SCREW-IN EXHAUST STUB (8 CYL) | 1 |
| 3 | 452339N | WASHER SET - HEAD | 5 |
| 4 | 4747094 | WASHER CYLINDER HEAD - BRIDGING | 1 |
| 5 | PH0505N | 1/4" x 3/4" UNC SHCS | 4 |
| 6 | AN090-416 | 1/4" FLAT WASHER | 4 |
| 7 | PH0852N | PLUG | 1 |
| 8 | PH0852N | HEAD BOLT SET | 3 |
| 9 | PC0168N | 85374- ROCKER COVER O-RING | 1 |
| 10 | 4866984 | LUBE PIPE SYMMETRIC HEAD | 1 |
| 11 | 4801340D | VALVE TRAIL ASSEMBLY (8 CYL) | 1 |
| 12 | 4A06200N | 1.25" INLET RUNNER ASSY L.S. - 8 CYL | 1 |
| 13 | PH0852N | SPARK PLUG | 2 |
| 14 | PK4000N | WELSH PLUG TERMINAL NUT | 2 |
| 15 | PH44011N | WELSH PLUG 8mm CUP TYPE | 1 |

| Parts List | | | |
|------------|---------------|--|-----|
| ITEM | PART NUMBER | DESCRIPTION | QTY |
| 1 | 4A012A0D | HEAD, VALVE SEAT, VALVE GUIDE ASSY (8 CYL) | 1 |
| 2 | 4595074 | INLET VALVE DIA 41 SYL HEAD (2.2L) | 1 |
| 3 | 4596074 | EXHAUST VALVE DIA 33 SYL HEAD (2.2L) | 1 |
| 4 | 4605074 | VALVE COLLET - MULTI GROOVE STEEL | 4 |
| 5 | 4604074 | TOP SPRING WASHER - MULTI GROOVE VALVE STEEL | 2 |
| 6 | PG71E24 | VALVE SPRING | 2 |
| 7 | 14775-ZE2-010 | BOTTOM SPRING WASHER | 2 |
| 8 | 4594074 | ROCKER SHAFT - SYL HEAD (2.2L) | 1 |
| 9 | PG121415F | BUSH - ROCKER SHAFT | 2 |
| 10 | 4591074 | ROCKER ARM - GEARED - #1 FRONT (2.2L) | 1 |
| 11 | 459207N | ROCKER ARM - GEARED - #1 REAR (2.2L) | 1 |
| 12 | 4593074 | ROCKER ADJUSTING SCREW 3/8 UNF (2.2L) | 2 |
| 13 | PH0505N | 1/4" x 1" UNC CAP SCREW | 1 |
| 14 | 459904N | 3/8" UNF LOCK NUT | 2 |
| 15 | PG0158N | BS014" O RING | 2 |
| 16 | 4960024 | COVER TUBE PUSHROD 5.1 L | 2 |
| 17 | PG10042N | BS114" O RING | 2 |
| 18 | 4959024 | PUSHROD 5.1 L | 2 |
| 19 | PH10724 | 1/4" BELLEVILLE WASHER | 1 |

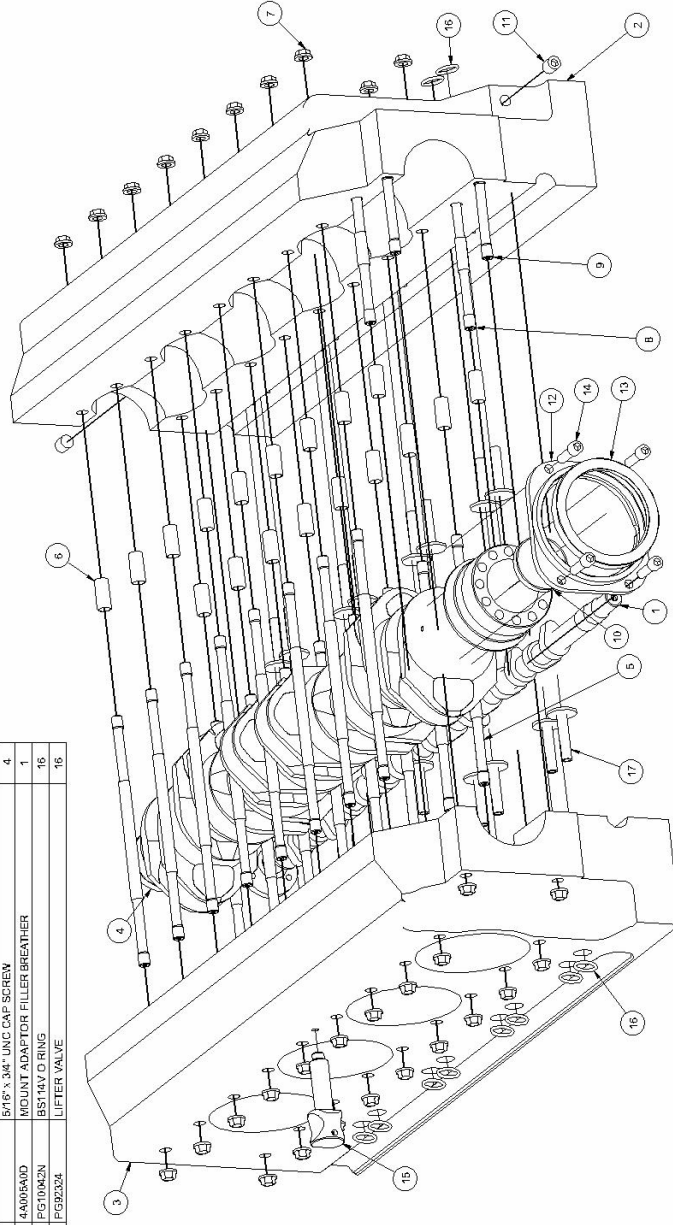


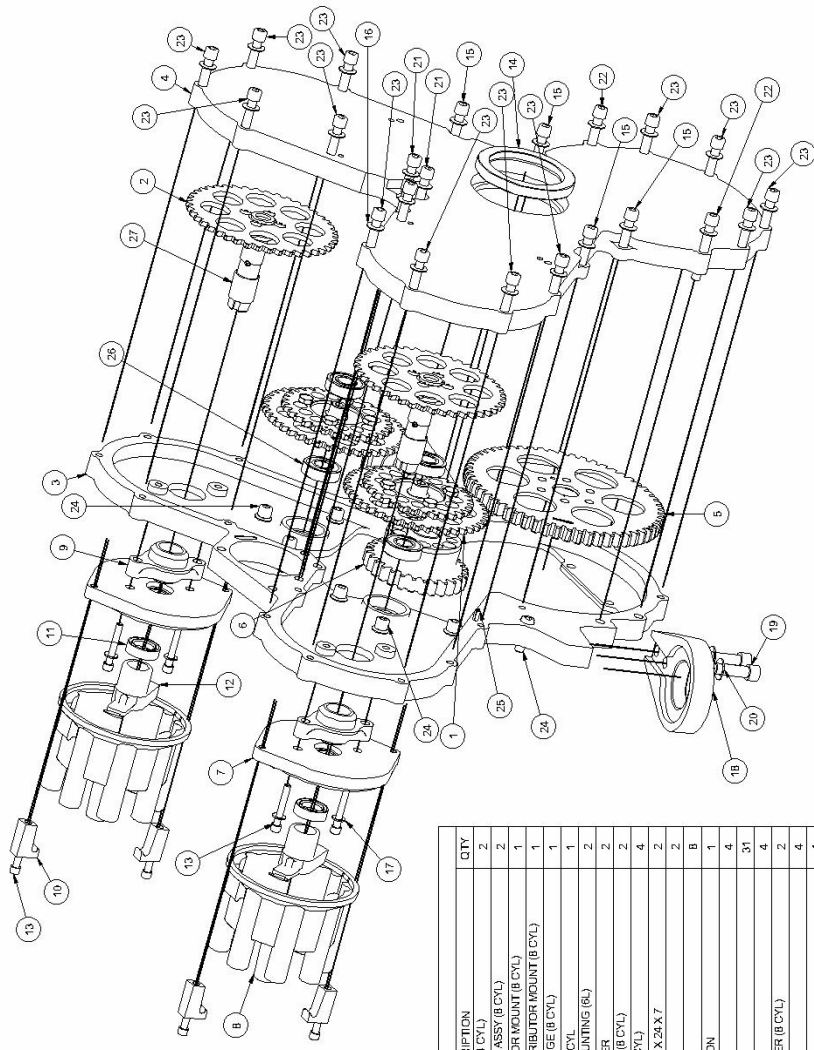
| Parts List | | | |
|------------|-------------|--------------------------------|-----|
| ITEM | PART NUMBER | DESCRIPTION | QTY |
| 1 | 4831004 | CONROD ASSY (6 CYL) | 1 |
| 2 | PG02400 | RING SET | 1 |
| 3 | PG0210N | PISTON & GLIDEON PIN SET | 5 |
| 4 | 4185022 | BARREL 5.1 L | 1 |
| 5 | PG02204 | CIRCLIP GLIDEON PIN *EN 182 | 2 |
| 6 | PG0025N | BS155 O-RING | 1 |
| Parts List | | | |
| ITEM | PART NUMBER | DESCRIPTION | QTY |
| 7 | 4831103 | CONROD MACHINED (6 CYL) | 1 |
| 8 | 4831204 | CONROD CAP (6 CYL) | 1 |
| 9 | PBA4000 | CONROD BIG END BEARING (6 CYL) | 2 |
| 10 | FH72524 | 5/16" X 1" UNC CAP SCREW | 2 |
| 11 | PH1033N | DOWEL PIN DIA 3x14 | 2 |



Part 15, Lift

| ITEM | PART NUMBER | DESCRIPTION | QTY |
|------|-------------|---|-----|
| 1 | 4B32063 | CAKSHAFI B CYL | 1 |
| 2 | 4B32082 | CRANKCASE L.S. (6L) | 1 |
| 3 | 4B32082 | CRANKCASE R.S. (6L) | 1 |
| 4 | 4B57022 | CRANKSHAFI 5.7 LB STROKE | 1 |
| 5 | 4B52074 | STUD LONG - BARREL (6L) | 16 |
| 6 | 4347064 | DOWEL CRANK CASE 2.2L | 18 |
| 7 | M52.1042-6 | NUT REDUCED WEIGHT | 36 |
| 8 | 4B61074 | STUD SHORT-BARREL (6L) | 2 |
| 9 | 4B60074 | STUD CRANKCASE FRONT (6L) | 2 |
| 10 | PH4A006N | WELSH PLUG 50mm CUP TYPE | 1 |
| 11 | PH4A007N | GRUB SCREW 1/4" NPS (8 CYL OIL GALLERY STOPPER) | 2 |
| 12 | 4B59074 | HOUSING FRONT SEAL (6L) | 1 |
| 13 | FGA000N | SEAL CRANK FRONT - B CYL (100 x 80 x 10) | 1 |
| 14 | 4A005A0D | 8/16" x 3/4" UNC CAP SCREW | 4 |
| 15 | 4A005A0D | MOUNT ADAPTOR FILLER BREATHER | 1 |
| 16 | PG10042N | BSTRIV O RING | 16 |
| 17 | FG92324 | LIFTER VALVE | 16 |

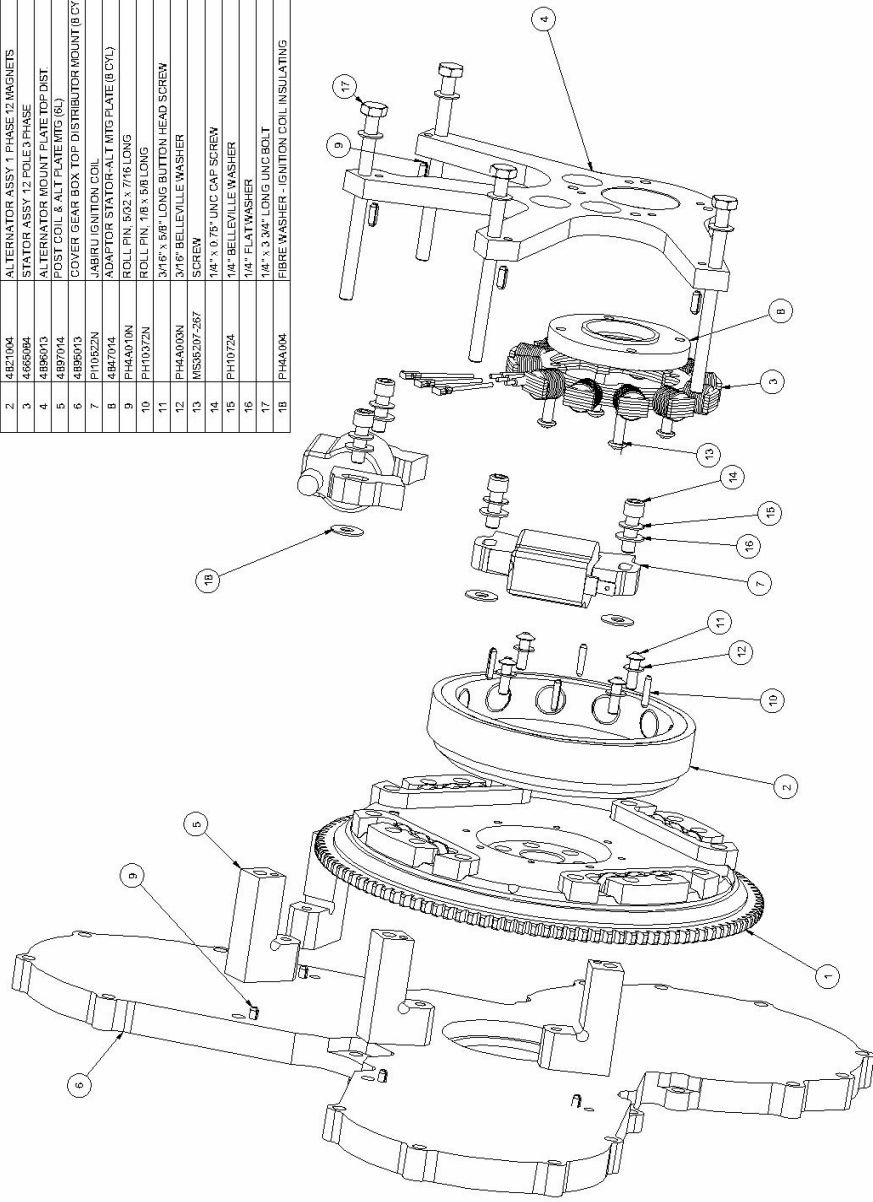




Parts List

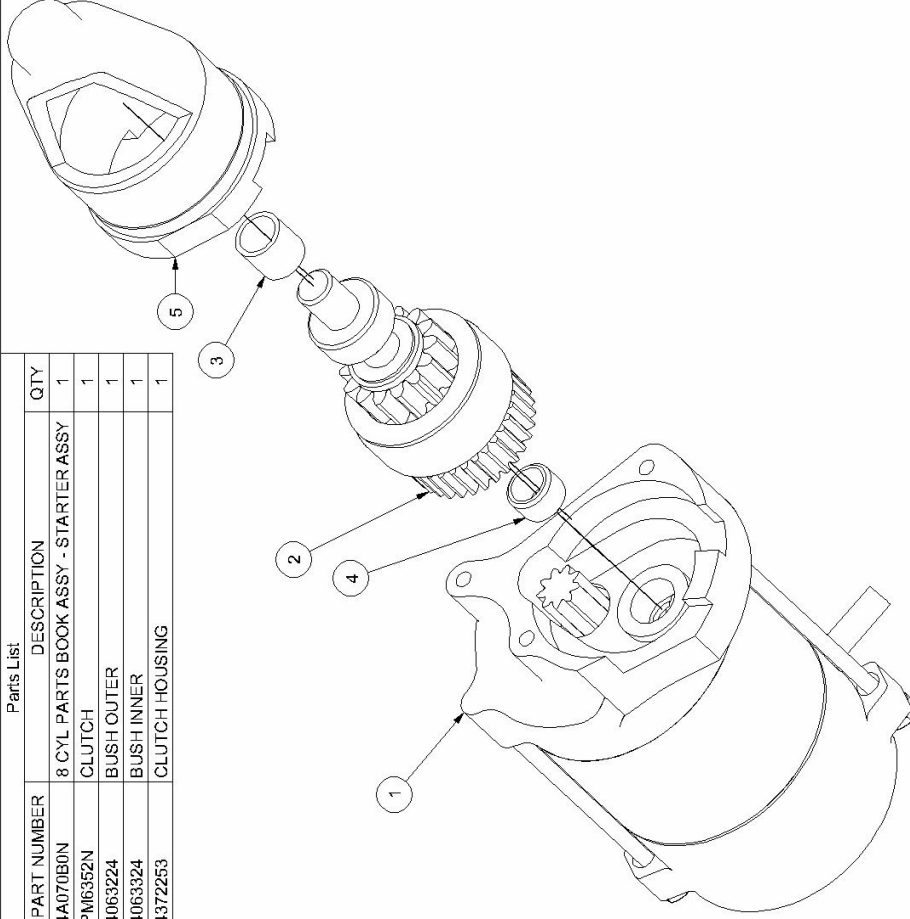
| ITEM | PART NUMBER | DESCRIPTION | QTY |
|------|-------------|--|-----|
| 1 | 4880014 | IDLER GEAR ASSY 4WT & 3WT (8 CYL) | 2 |
| 2 | 4880014 | DISTRIBUTOR SHAFT & GEAR ASSY (8 CYL) | 2 |
| 3 | 4880013 | REAR PLATE TOP DISTRIBUTOR MOUNT (8 CYL) | 1 |
| 4 | 4880013 | COVER GEAR BOX TOP DISTRIBUTOR MOUNT (8 CYL) | 1 |
| 5 | 4842014 | GEAR TIMING CAMSHAFT LARGE (8 CYL) | 1 |
| 6 | 4841014 | GEAR TIMING CRANKSHAFT (8 CYL) | 1 |
| 7 | 4855014 | PLATE DISTRIBUTOR CAP MOUNTING (8L) | 2 |
| 8 | FG02014 | DISTRIBUTOR CAP - 8 CYLINDER | 2 |
| 9 | 4909014 | SPACER DISTRIBUTOR DRIVE (8 CYL) | 2 |
| 10 | 4858014 | CLAMP DISTRIBUTOR CAP (8 CYL) | 4 |
| 11 | FG10622N | SEAL DISTRIBUTOR SHAFT 15X24X7 | 2 |
| 12 | FE4A1002N | DISTRIBUTOR ROTOR - 8 CYL | 2 |
| 13 | FG9872N | OIL SEAL 85 X 72 X 8 TCVA VITON | 8 |
| 14 | PH10724 | 1/4" X 1" UNC CAP SCREW | 4 |
| 15 | PH10724 | 1/4" BELLEVILLE WASHER | 31 |
| 17 | PH4A003N | 3/16" BELLEVILLE WASHER | 4 |
| 18 | 48A0014 | PLATE ENGINE MOUNT RUBBER (8 CYL) | 2 |
| 19 | PH22E24 | 5/16" X 1" UNC CAP SCREW | 4 |
| 20 | PH10624 | 5/16" BELLEVILLE WASHER | 4 |
| 21 | | 1/4" X 1 1/2" UNC CAP SCREW | 3 |
| 22 | | 1/4" X 1 3/4" UNC CAP SCREW | 2 |
| 23 | | 1/4" X 1 1/4" UNC CAP SCREW | 14 |
| 24 | | 1/4" X 0.75" UNC CAP SCREW | 8 |
| 25 | PH4A008N | ROLL PIN 4 X 1/8 LONG | 4 |
| 26 | FB8A002N | BEARING - DISTRIBUTOR IDLER GEAR 12 X 28 X 8 | 4 |
| 27 | FB8A003N | BUSH DISTRIBUTOR SHAFT - 8 CYL (16 X 18 X 19 LONG) | 2 |

| ITEM | PART NUMBER | DESCRIPTION | QTY |
|------|-------------|--|-----|
| 1 | 4886013 | FLYWHEEL ASSY (8 CYL) | 1 |
| 2 | 4821094 | ALTERNATOR ASSY 1 PHASE 12 MAGNETS | 1 |
| 3 | 4660084 | STATOR ASSY 12 POLE 3 PHASE | 1 |
| 4 | 4886013 | ALTERNATOR MOUNT PLATE TOP DIST | 1 |
| 5 | 4887014 | POST COIL & ALT PLATE M/G (8L) | 4 |
| 6 | 4886013 | COVER GEAR BOX TOP DISTRIBUTOR MOUNT (8 CYL) | 1 |
| 7 | P116322N | LABRU IGNITION COIL | 2 |
| 8 | 4847014 | ADAPTOR STATOR-ALT MTD PLATE (8 CYL) | 1 |
| 9 | PH4A010N | ROLL PIN, 5/32 x 7/16 LONG | 8 |
| 10 | PH10372N | ROLL PIN, 1/8 x 5/8 LONG | 4 |
| 11 | | 3/16" x 5/8" LONG BUTTON HEAD SCREW | 4 |
| 12 | PH4A000N | 3/16" BELLEVILLE WASHER | 4 |
| 13 | MS8207-287 | SCREW | 4 |
| 14 | | 1/4" x 1/8" UNC CAP SCREW | 4 |
| 15 | PH10724 | 1/4" BELLEVILLE WASHER | 8 |
| 16 | | 1/4" PLAT WASHER | 4 |
| 17 | | 1/4" x 3/8" LONG UNC BOLT | 4 |
| 18 | PH4A1004 | FIBRE WASHER - IGNITION COIL INSULATING | 4 |

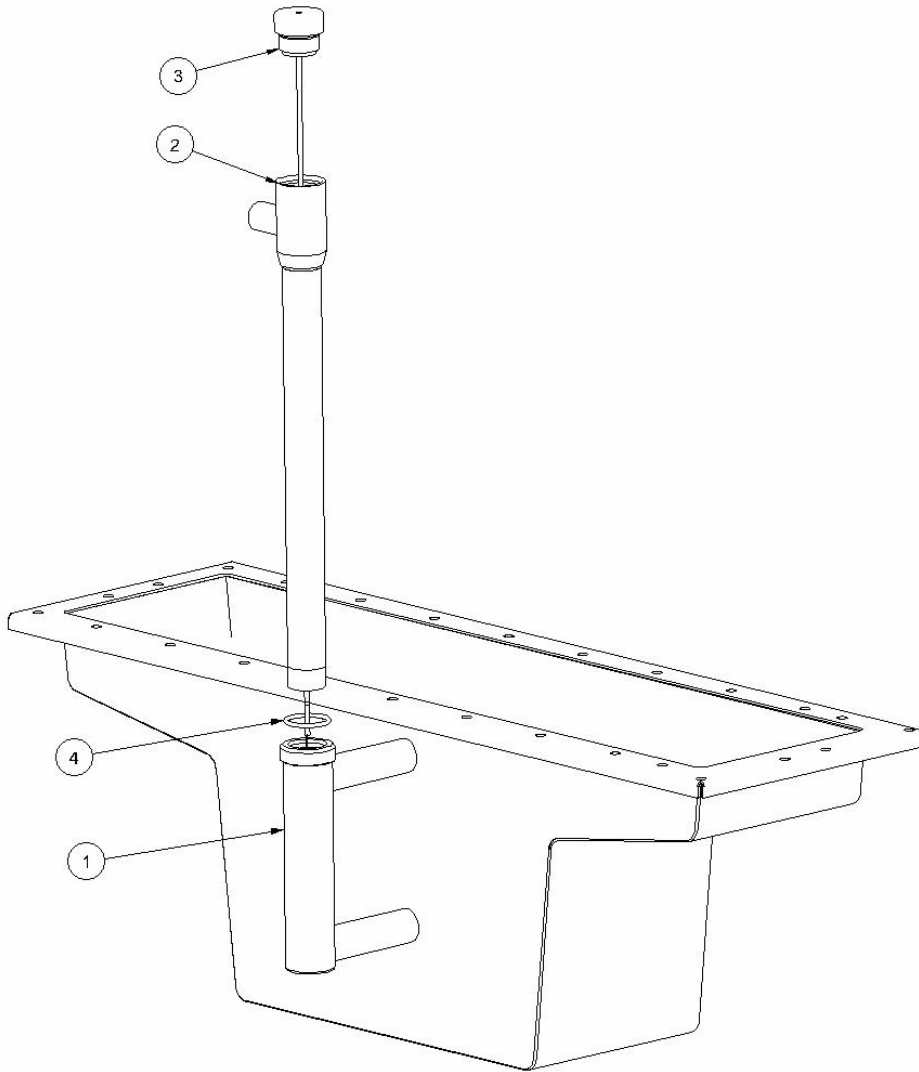


Parts List

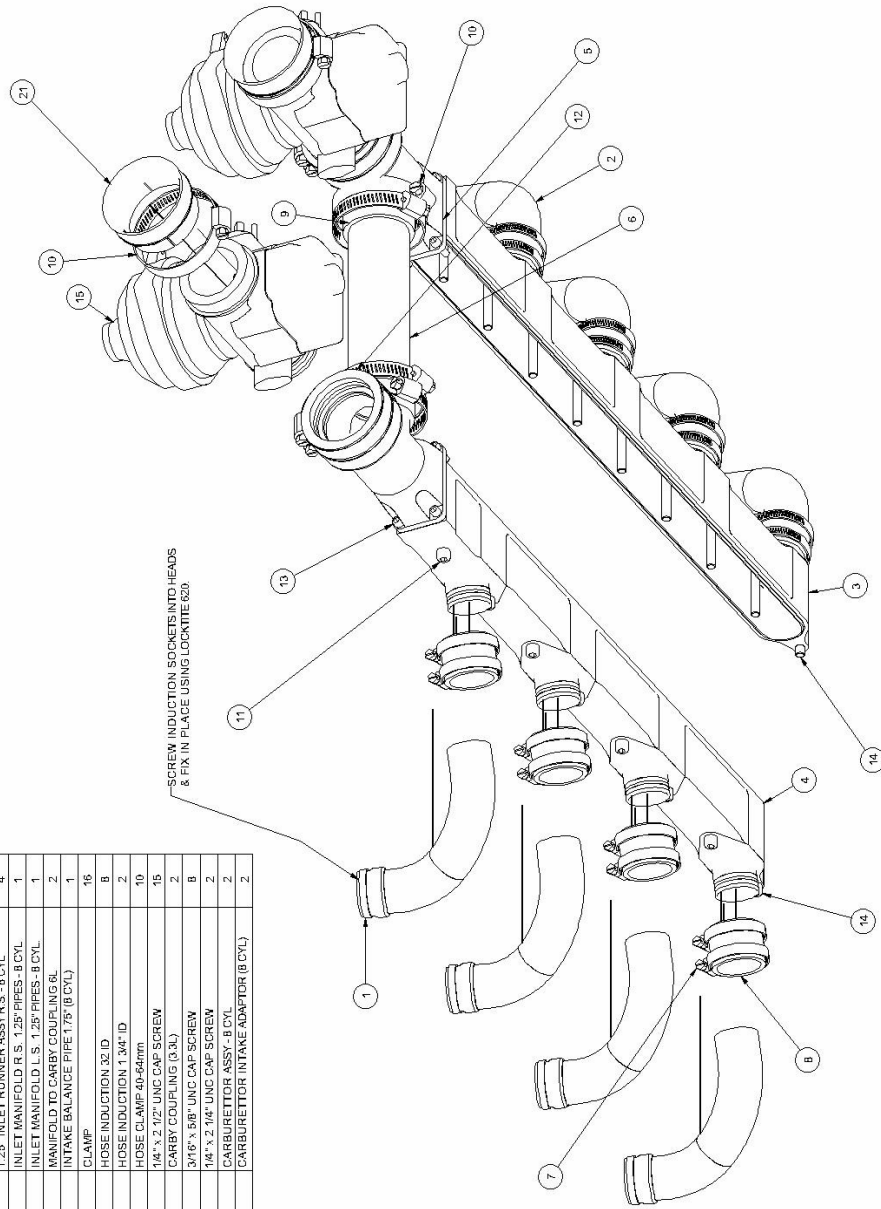
| ITEM | PART NUMBER | DESCRIPTION | QTY |
|------|-------------|--------------------------------------|-----|
| 1 | 4A070B0N | 8 CYL PARTS BOOK ASSY - STARTER ASSY | 1 |
| 2 | PM6352N | CLUTCH | 1 |
| 3 | 4063224 | BUSH OUTER | 1 |
| 4 | 4063324 | BUSH INNER | 1 |
| 5 | 4372253 | CLUTCH HOUSING | 1 |

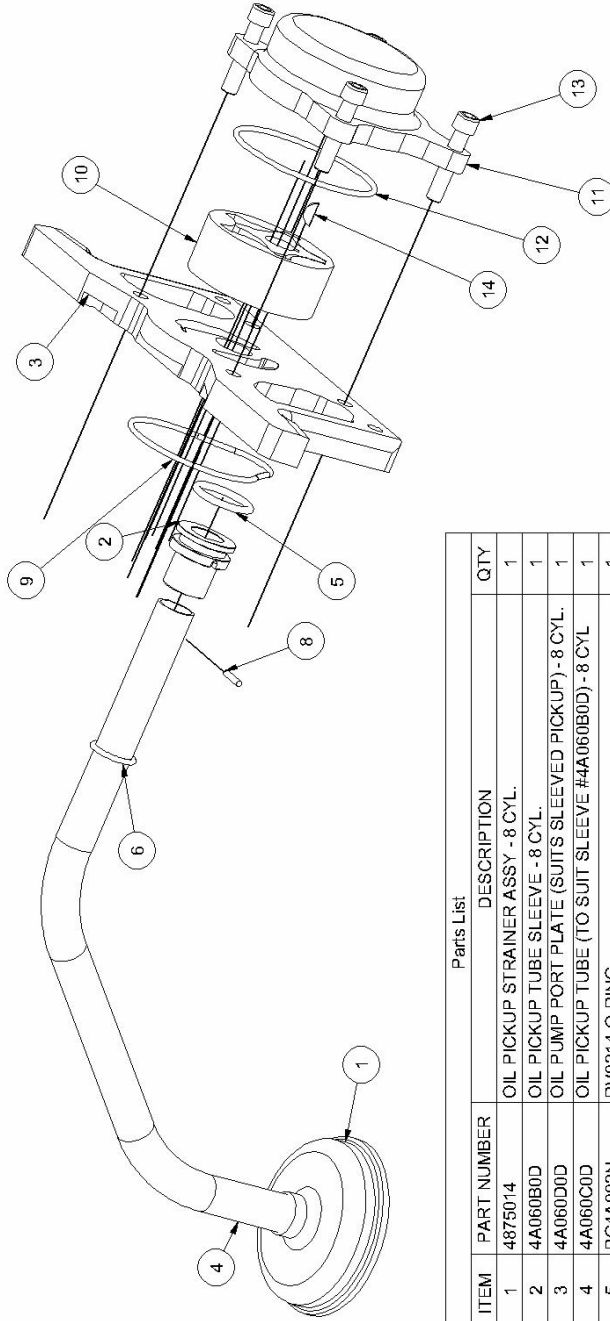


| Parts List | | | |
|------------|-------------|----------------------------------|-----|
| ITEM | PART NUMBER | DESCRIPTION | QTY |
| 1 | 4A000A0D | SUMP 5.1L W/ASSY | 1 |
| 2 | 4A002A0D | OIL FILLER BREATHER ASSY (8 CYL) | 1 |
| 3 | 4A003A0D | DIPSTICK ASSY (8 CYL) | 1 |
| 4 | PG4A006N | O-RING BS120V | 1 |



| Paris List | | | |
|------------|-------------|---|-----|
| ITEM | PART NUMBER | DESCRIPTION | QTY |
| 1 | 4A06250N | 1.25" INLET RUNNER ASSY L.S. - 8 CYL | 4 |
| 2 | 4A06200D | 1.25" INLET RUNNER ASSY R.S. - 8 CYL | 4 |
| 3 | 4A06200D | 1.25" INLET RUNNER ASSY R.S. - 8 CYL | 4 |
| 4 | 4A06200D | 1.25" INLET RUNNER ASSY R.S. - 8 CYL | 4 |
| 5 | 4B1113 | INLET MANIFOLD L.S. 1.25" PIPES - 8 CYL | 1 |
| 6 | 4A007A0D | MANIFOLD TO CARBY COUPLING 6L | 2 |
| 7 | PC102924 | INTAKE BALANCE PIPE 1.75" (8 CYL) | 1 |
| | | CLAMP | 16 |
| 8 | PV102924 | HOSE INDUCTION 32 ID | 8 |
| 9 | PV102924 | HOSE INDUCTION 1.34" ID | 2 |
| 10 | PH1A008N | HOSE CLAMP 46-64mm | 10 |
| 11 | PH1A008N | 1/4" x 2 1/2" UNC CAP SCREW | 15 |
| 12 | 4B1100A | CARBY COUPLING (3.3L) | 2 |
| 13 | | 3/16" x 5/8" UNC CAP SCREW | 8 |
| 14 | | 1/4" x 2 1/4" UNC CAP SCREW | 2 |
| 15 | PG1A108N | CARBURETOR ASSY 8 CYL | 2 |
| 21 | 4B2302A | CARBURETOR INTAKE ADAPTOR (8 CYL) | 2 |





| Parts List | | | |
|------------|-------------|---|-----|
| ITEM | PART NUMBER | DESCRIPTION | QTY |
| 1 | 4875014 | OIL PICKUP STRAINER ASSY - 8 CYL. | 1 |
| 2 | 4A060B0D | OIL PICKUP TUBE SLEEVE - 8 CYL. | 1 |
| 3 | 4A060D0D | OIL PUMP PORT PLATE (SUITS SLEEVED PICKUP) - 8 CYL. | 1 |
| 4 | 4A060C0D | OIL PICKUP TUBE (TO SUIT SLEEVE #4A060B0D) - 8 CYL. | 1 |
| 5 | PG4A002N | RV0214 O-RING | 1 |
| 6 | PG0148N | BS116 VITON O'RING | 1 |
| 8 | PH1033N | DOWEL PIN DIA 3x14 | 1 |
| 10 | 4963024 | OIL PUMP GEAR SET | 1 |
| 9 | | BS0148 O'RING | 1 |
| 11 | 4964024 | GEAR HOUSING *OP327C (5.1L) | 1 |
| 12 | PG4A007N | BS148 VITON O'RING | 1 |
| 13 | | 5/16" x 1.5" 5/16 UNF CAP SCREW | 4 |
| 14 | PH115334 | DRIVE - OIL PUMP 1/8" X 1/2"DIA WOODRUF | 1 |