

SUBMITTAL



P.O. BOX 595, TROY, NEW YORK 12181
TEL 518 274 0961 - FAX 518 274 0210
WWW.ROSSVALVE.COM

SUBMITTAL

**T Series Pressure Reducing Valve
Direct Acting Type**

ROSS TECHNOLOGY PARK
75 102ST STREET, TROY, NY 12181
TEL 518.274.0961 - WWW.ROSSVALVE.COM





SUBMITTAL NOTES

PROJECT: _____

Ross T-Series – Direct Acting Pressure Reducing Valve

Size: _____ inch / mm

Every Ross Valve shall be hydrostatically tested for body integrity and tight seating at the factory prior to shipment. Field operating conditions are simulated, and adjustments are made for proper operation. In order to design and test each valve under operating conditions similar to those in the field, please complete / confirm the following:

- Inlet (supply) pressure _____ psi
- Outlet (downstream) pressure range _____ psi
- Initial Outlet (downstream) pressure setting _____ psi

The Ross Globe Body Style Valve can be installed in any position. In order to properly design the valve, please confirm the physical layout of the installation. (** Designates standard valve orientation.)

Valve inlet & outlet (flow) : Horizontal ** or Vertical

Valve piston axis : Vertical ** or Horizontal Horizontal

The valve shall be furnished with:

- End Connections: Female NPT threaded ends
 Male NPT threaded ends with union connections and Female NPT tail pieces
 - All bronze construction
 - Operation & Maintenance Manual (shipped with the valve).
 - Other (Code / Description) _____ / _____
- (Please list any additional features that are required. A representative may need to contact you for any relevant operating data.)

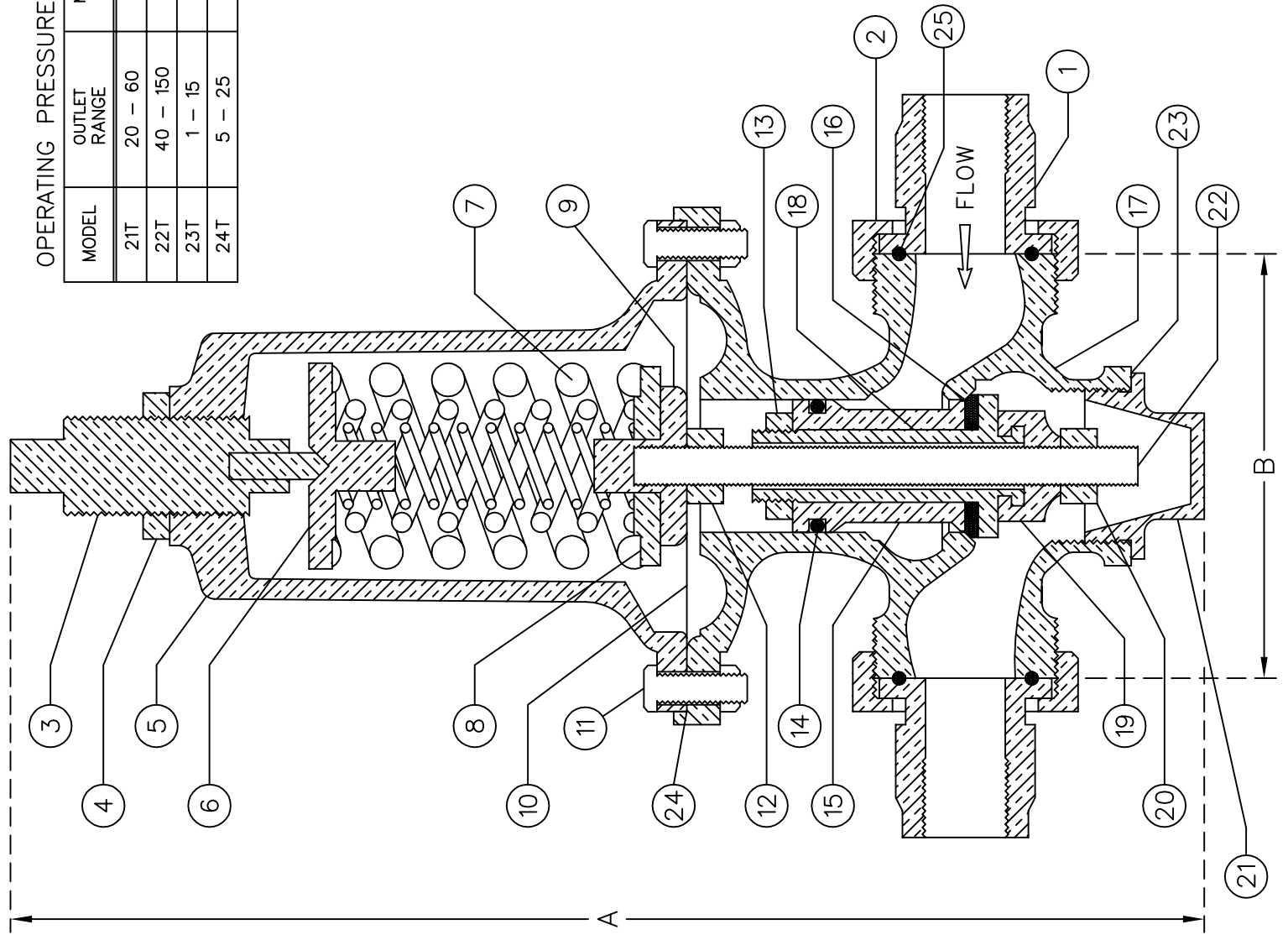
The valve will be constructed with materials and options stated on this notes page & cut view drawing & quote only, any changes or adders will be reviewed by Ross Valve Mfg. Co., Inc. with possible additional charges to quoted valve pricing. All information following the cut view drawing is for general information. Any special submittal requirements will be an additional charge to purchaser. The Ross Valve Mfg. Co., Inc. reserves the right to modify valve construction which will result in equal or superior performance to existing designs. These modifications may be made at any time and at the sole discretion of the manufacturer.

OPERATING PRESSURES (PSI)

MODEL	OUTLET RANGE	MAXIMUM INLET
21T	20 - 60	250
22T	40 - 150	250
23T	1 - 15	250
24T	5 - 25	250

PART	DESCRIPTION	QTY	MATERIAL
1	TAIL PIECE - UNION	2	BRONZE
2	NUT - UNION	2	BRONZE
3	ADJUSTING SCREW	1	BRONZE
4	LOCK NUT	1	BRONZE
5	SPRING CHAMBER	1	BRONZE
6	TOP SPRING WASHER	1	BRONZE
7	SPRING (SET)	VARY	STEEL
8	BOTTOM SPRING WASHER (OPTIONAL)	1	BRONZE
9	DIAPHRAGM BUTTON	1	BRONZE
*10	DIAPHRAGM (SET)	VARY	BRONZE or BUNA-N
11	BOLTS & NUTS - CHAMBER	VARY	STAINLESS
12	DIAPHRAGM NUT	1	BRONZE
13	STEM NUT	1	BRONZE
*14	O-RING - THIMBLE	1	BUNA-N
15	THIMBLE	1	BRONZE
*16	SEAT PACKING	1	POLYURETHANE
17	VALVE SHELL	1	BRONZE
18	VALVE STEM	1	BRONZE
19	LINK NUT	1	BRONZE
20	LOCK NUT	1	BRONZE
21	BOTTOM CAP	1	BRONZE
22	STEM - DIAPHRAGM	1	STAINLESS
*23	GASKET - BOTTOM CAP	1	COMPOSITION
*24	GASKET - DIAPHRAGM	1	COMPOSITION
25	O-RING - UNION	2	BUNA-N

* INCLUDED IN STANDARD REPAIR KIT



DIMENSIONS (INCHES)

SIZE (NPT)	SHIPPING WEIGHT	A	B
1/2	12	11-3/4	3-5/8
3/4	12	11-3/4	3-5/8
1	12	11-3/4	4-1/8
1-1/4	17	12-1/2	5
1-1/2	17	12-1/2	5

ROSS VALVE Mfg. Co., Inc.
 6 OAKWOOD AVENUE - P.O. BOX 595 - TROY, NEW YORK, 12181 - TEL. (518) 274 0961

NO SCALE | DRAWING 21T | REVISED 5-11-05

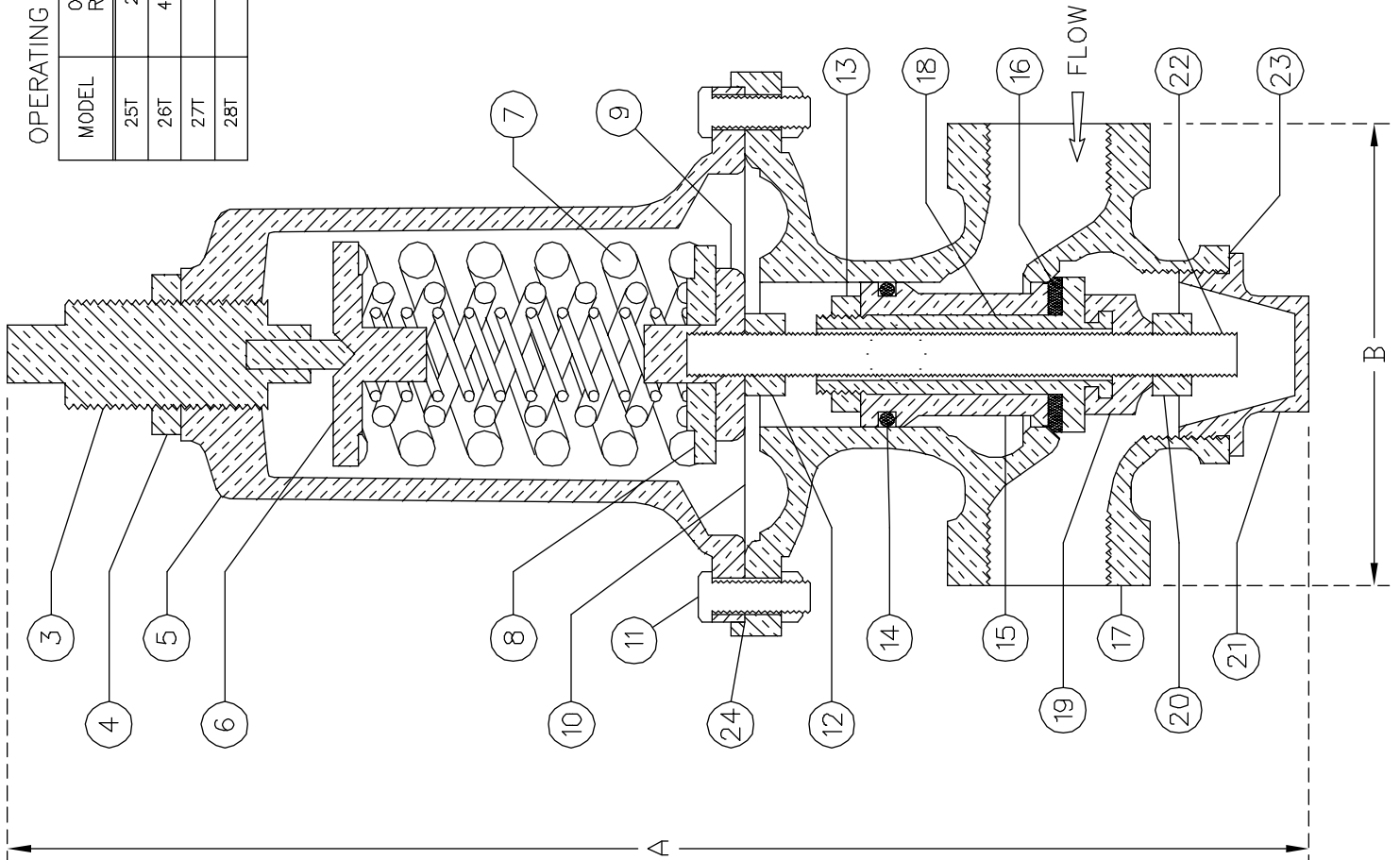
DATE 4-2-63 2851

MODELS 21T, 22T, 23T, & 24T
 DIRECT ACTING PRESSURE REDUCING VALVE
 WITH UNIONS & FNPT CONNECTIONS

FILE: 21-22-23-24T

OPERATING PRESSURES (PSI)

MODEL	OUTLET RANGE	MAXIMUM INLET
25T	20-60	250
26T	40-150	250
27T	1-15	250
28T	5-25	250



DIMENSIONS (INCHES)

SIZE (NPT)	SHIPPING WEIGHT	A	B
1/2	12	11-3/4	3-5/8
3/4	12	11-3/4	3-5/8
1	12	11-3/4	4-1/8
1-1/4	17	12-1/2	5
1-1/2	17	12-1/2	5

* INCLUDED IN STANDARD REPAIR KIT

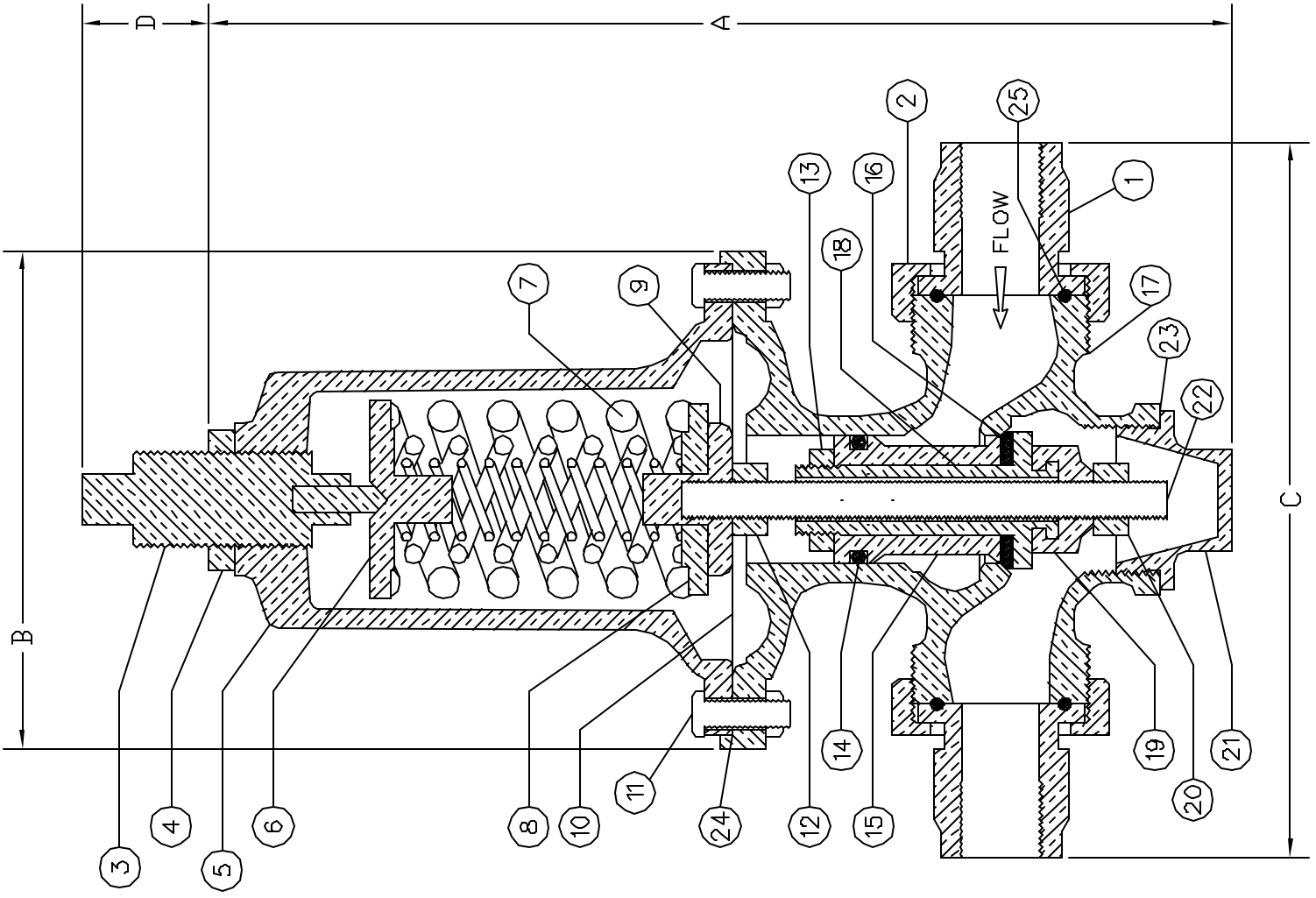
PART	DESCRIPTION	QTY	MATERIAL
3	ADJUSTING SCREW	1	BRONZE
4	LOCK NUT	1	BRONZE
5	SPRING CHAMBER	1	BRONZE
6	TOP SPRING WASHER	1	BRONZE
7	SPRING (SET)	VARY	STEEL
8	BOTTOM SPRING WASHER (OPTIONAL)	1	BRONZE
9	DIAPHRAGM BUTTON	1	BRONZE
*10	DIAPHRAGM (SET)	VARY	BRONZE
11	BOLTS & NUTS - CHAMBER	R	BRONZE
12	DIAPHRAGM NUT	1	BRONZE
13	STEM NUT	1	BRONZE
*14	O-RING - THIMBLE	1	BUNA-N
15	THIMBLE	1	BRONZE
*16	SEAT PACKING	1	POLYURETHANE
17	VALVE SHELL	1	BRONZE
18	VALVE STEM	1	BRONZE
19	LINK NUT	1	BRONZE
20	LOCK NUT	1	BRONZE
21	BOTTOM CAP	1	BRONZE
22	STEM - DIAPHRAGM	1	STAINLESS
*23	GASKET - BOTTOM CAP	1	COMPOSITION
*24	GASKET - DIAPHRAGM	1	COMPOSITION

ROSS VALVE MFG. CO., INC.
 6 OAKWOOD AVENUE - P.O. BOX 595 - TROY, NEW YORK, 12181 - TEL. (518) 274 0961

NO. SCALE: DRAWING 25T
 DATE 4-2-63 2851 REVISED 9-27-99 S.M.

MODELS 25T, 26T, 27T, & 28T
 DIRECT ACTING PRESSURE REDUCING VALVE
 WITH FNPT CONNECTIONS

FILE: 25-26-27-28T



PART	DESCRIPTION	QTY	MATERIAL
1	TAIL PIECE - UNION	2	BRONZE
2	NUT - UNION	2	BRONZE
3	REGULATING SCREW	1	BRONZE
4	LOCK NUT	1	BRONZE
5	SPRING CHAMBER	1	BRONZE
6	TOP SPRING WASHER	1	BRONZE
7	SPRINGS	VARY	STEEL
8	BOTTOM SPRING WASHER	1	BRONZE
9	DIAPHRAGM BUTTON	1	BRONZE
*10	DIAPHRAGMS	VARY	BRONZE
11	BOLTS & NUTS - CHAMBER	VARY	BRONZE
12	DIAPHRAGM NUT	1	BRONZE
13	STEM NUT	1	BRONZE
*14	O-RING - THIMBLE	1	ELUNA-N
15	THIMBLE	1	BRONZE
*16	SEAT PACKING	1	POLY
17	VALVE SHELL	1	BRONZE
18	VALVE STEM	1	BRONZE
19	LINK NUT	1	BRONZE
20	LOCK NUT	1	BRONZE
21	BOTTOM CAP	1	BRONZE
22	STEM - DIAPHRAGM	1	BRONZE
*23	GASKET - BOTTOM CAP	1	COMPOSITION
*24	GASKET - DIAPHRAGM	1	COMPOSITION
25	O-RING - LOCK NUT	1	ELUNA-N

* INCLUDED IN STANDARD REPAIR KIT

OPERATING PRESSURE (PSI)	
MODEL	RANGE (PSI)
30T	25 - 300

DIMENSIONS (INCHES)			
A	B	C	D
11-1/2	4-3/4	8-1/2	3/4 TO 3

ROSS VALVE Mfg. Co., Inc.
 6 OAKWOOD AVENUE - P.O. BOX 566 - TROY, NEW YORK, 12161 - TEL. (518) 274-0861

NO SCALE DRAWING 30T
 DATE 4-2-63 2851 REVISED 7-9-99 S.M.
 MODELS 30T (SIZE 1-1/2")
 DIRECT ACTING PRESSURE REDUCING VALVE
 WITH UNIONS & FNPT CONNECTIONS

FILE: 30TADIM

ROSS VALVE SUPPORT SERVICES

PROVIDES PERSONAL SERVICE IN EVERY PHASE OF DEVELOPMENT,
INSTALLATION AND MAINTENANCE.

We are always available to provide answers to any questions. No sale is ever "final"



DEDICATED SUPPORT LINES

Sales engineers available Monday through Friday 7am to 5:00pm EST

Phone to help with any questions — (518) 274-0961

Fax machine – (518) 274-0210

After Hours Support – (518) 279-4373

E-Mail – sales@rossvalve.com



TRAINING

Factory Training — Ross Valve believes that our customers should know as much as possible about our products. That is why we periodically host Customer Training seminars at our Ross Technology Park in Troy, NY. Here, our customers learn the workings of the valves, how to correctly maintain them, and how they are manufactured.

In addition, Ross representatives are often in the field giving product seminars for your convenience.

FIELD SERVICE

When a repair, upgrade, or modification is required for an existing Ross Valve, Factory Authorized Ross Service Technicians offer the best service available, including:

Technical assistance for start-up or continuing training.

Fully inventoried service vehicles to allow replacement of necessary parts.

Confined Space/OSHA trained with latest equipment

On-site / hands-on training for your staff.

Ability to return older valves to "like-new" condition.

YEARLY CONTRACTS AVAILABLE

WARRANTY

All valves and materials are guaranteed free from defects for 1 year from the date shipped.

Ross Valves are economically rebuilt. Every internal part is replaceable through the top of the valve, without removing it from the line. All seals and internal packings are replaceable, which contributes to the valve's longevity.

Ross Valve stocks a wide variety of repair parts which can be received by the customer as early as the next day. In-house computer links track packages to ensure timely delivery.

Detailed historical record keeping gives us a full report of all maintenance or upgrades that have been made on each valve. This allows us to evaluate performance in the past and maximize performance in the future.



ROSS VALVE

Automatic Control Valves & Pre-Packaged
Vaults for Water & Wastewater

www.rossvalve.com

P.O. Box 595,
Troy, New York 12181, USA

Phone: (518) 274-0961 Fax: (518) 274-0210

E-Mail: sales@rossvalve.com