

Missoulian
1/27/64

PTA Told to Watch Legislative Action

Importance of watching work of the Montana Legislature was stressed by Mrs. Carolyn Frojen at the monthly meeting of the Missoula County High School Parent-Teacher Association in the Sentinel building.

Mrs. Frojen, legislative chairman for the MCHS PTA, reported on several bills, including proposed increases in foundation scheduling, investment of reserve funds, allocation of the Montana High School Association powers and a public vote on junior high schools. She said it is important for individuals

to let their representatives know how they feel on these issues.

A program on "Problems of Today" was presented by a panel moderated by the PTA president, Mrs. Wayne Ward. Taking part were Judy Risk, Sentinel senior; Lex Hames, Hellgate junior; Joanne Bange-man, Hellgate junior; Jim Maxson, Sentinel senior; Mrs. Mary Ann Thompson, Sentinel English teacher; Reuben Zieg, Hellgate math teacher, and two parents, James Ellen and Mrs. John E. Wilson.

The major idea expressed by panel participants was that parents basically must take a more active interest if the child is to have a fair and equal chance in the competitive society faced today.

It was announced the February meeting will be in the Hellgate building. A tour of the new addition, a special recognition program and refreshments are included on the program. A decision is to be made at the next meeting whether to continue the system of one PTA unit for the two schools or to have two separate units when the fall term begins.



KEYS TO SEELEY-SWAN HIGH SCHOOL DELIVERED

Marshall Gray of the Missoula County High School board of trustees, at right, Saturday accepted the keys to the new Seeley-Swan High School during cere-

monies at the school. Making the presentation was Stewart Price of the architectural firm of Witwer & Price.



New High School Dedicated at Rites

The "proud occasion" of the dedication of the new Seeley-Swan High School was cited by State Public Instruction Supt. Harriet Miller Saturday in ceremonies at the school.

Miss Miller noted that the community "has taken one more step in the direction of quality education" in construction of the \$278,000 building southeast of Seeley Lake.

In a welcome to the students, faculty, parents and friends attending, Chairman Jack F. Hoon of the board of trustees of Missoula County High School paid tribute to the "untiring, dedicated and determined efforts" of residents of the area in secur-

ing construction of the school.

"We who have watched you work on this project for a number of years are fully aware of the vast amount of time and effort and personal funds that have been expended by your group," Hoon said.

Scheduled to officially accept the building, Hoon instead delegated the job to Marshall Gray, Seeley Lake board member who, Hoon said, "not only has been a fine representative of this area on the board but has shown the same enthusiasm and effort on all board matters."

Stewart Price of the architectural firm of Witwer & Price presented the building. He paid

special tribute to the Gleason Construction Co., prime contractor on the job.

The Rev. Lawrence Gruman, a trustee of MCHS, offered thanks for "a hope realized, in a structure fabricated of dreams and aspirations now fulfilled." He prayed for the "unquenchable desire to spur the mind and develop the spirit of each student who comes into this place," that those who "study and mature in this school be a blessing to this community and to the world."

Presiding at the dedication was Dr. W. W. Wetzel, superintendent of Missoula County High School, who said that despite the modern trend toward consolidation of school facilities, he was convinced that establishment of the Seeley-Swan unit of MCHS was "justified and necessary."

Students in the area formerly rode to Missoula in what was called the longest school bus trip in the nation, a round trip of some 120 miles.

Entertainment at the dedication was provided by a string ensemble from Hellgate and Sentinel high schools and a girls trio of Seeley-Swan composed of Thea Wold, Sharon Baker and Becky Wise.

Most of those attending the rites inspected the new building following the dedication.

Ed Jackson
Mar Miller
12 to 5 Sunday -- and charge it!

Ed Jackson
Mar Miller
THE

FLASHBACK

the new school had to be delayed because of problems with the electrical system. Residents of Seeley-Swan fought for five years to get their own branch of Missoula County High School, and in September efforts began to build a new school. One surprise school officials had when they began registration was that the school would open with nearly 135 students instead of the original estimate of 80 students, causing there to be some adjustments in the building plan.

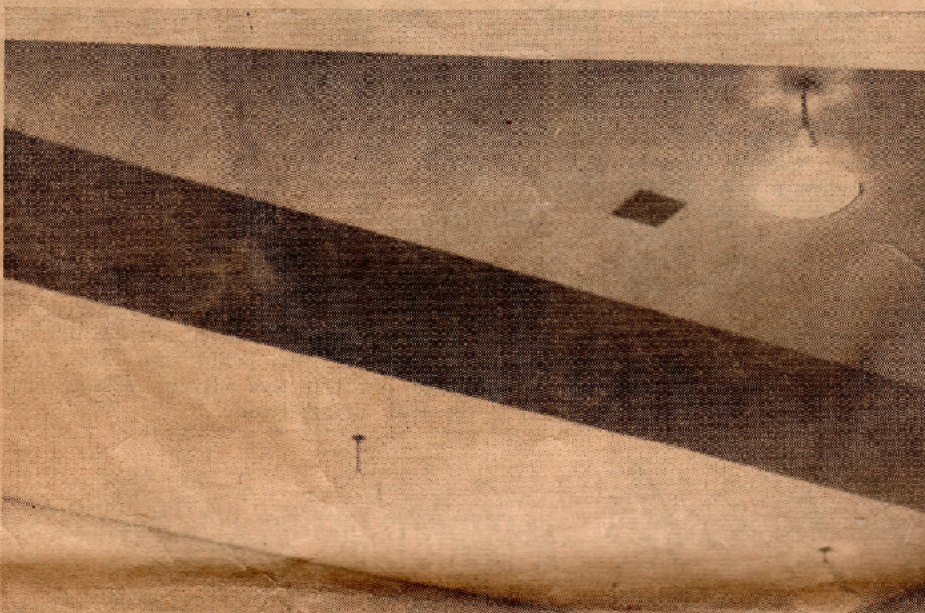
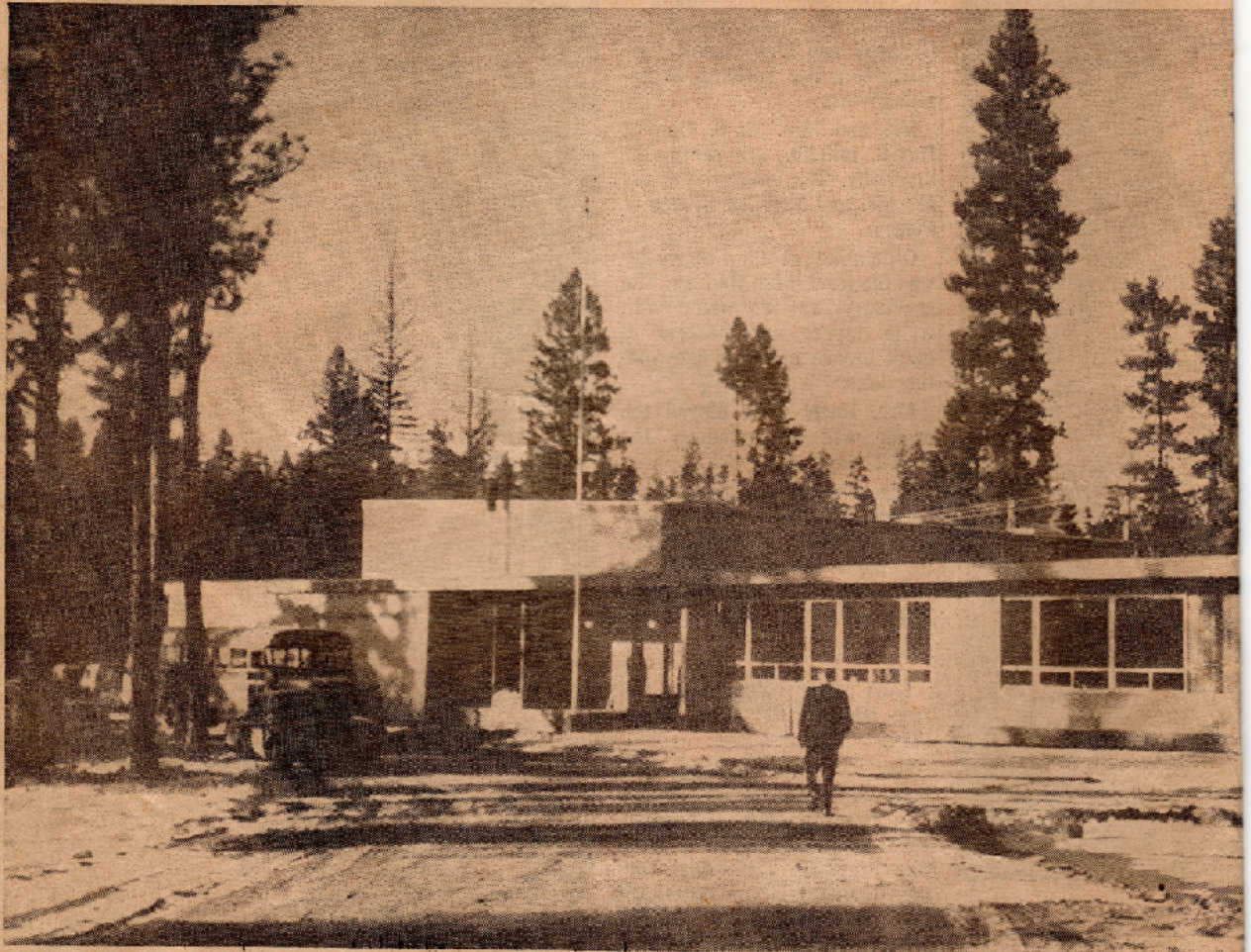
After two false starts, Monday was the day that Seeley-Swan High School students finally moved into their brand-new high school. For the first three months of classes, high school students at Seeley had attended classes on a split-shift basis at Seeley's grade school. Twice in just a few weeks, the opening of

It was quite a first year at Seeley-Swan High School. Four full-time teachers and a half-time teacher-principal were responsible for the education of 135 students. Seeley-Swan High School has turned out to be a real boom to the community and to students,, reversing a trend of massive dropouts that happened when students were forced to make the 180 daily round-trip to Missoula for high school. Shop class areas were greatly expanded in 1966 and a library

Society
The Arts

The M

Missoula, Montana, Sunday



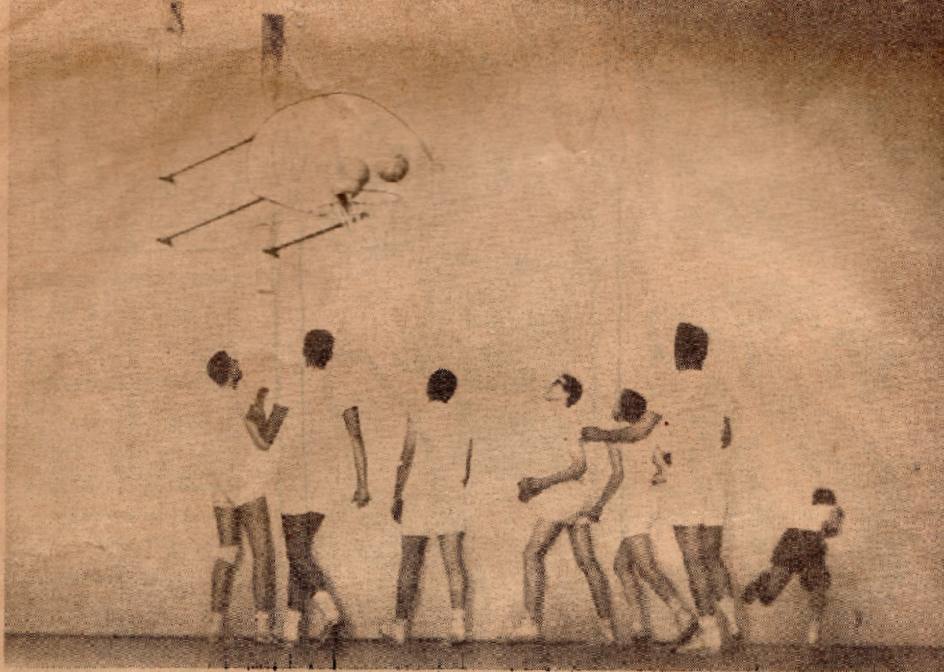
Sm Sai

By A

Seeley-Swan High School
Student and faculty mo
good humor.

And the long-discussed
adequate to school dema

More than a quarter o
into completion of the s



ture near Seeley Lake. roundtrip bus rides for over.

As of today, the longest is roughly 40 miles each northern tip of the county and girls travel from the County, about 30 miles, from well within that range.

Principal Roy Scott, who from Washington state brought Seeley-Swan enrollment records.

Scott teaches industrial personally completing work of building north of the main

Miss Shirley Bandy, home teacher, is patiently waiting for a refrigerator, but otherwise the building is well equipped.

Other faculty members include English; Kim Haines, science; Patrick Dolan, social studies; health; and Mrs. Judy Dolan.

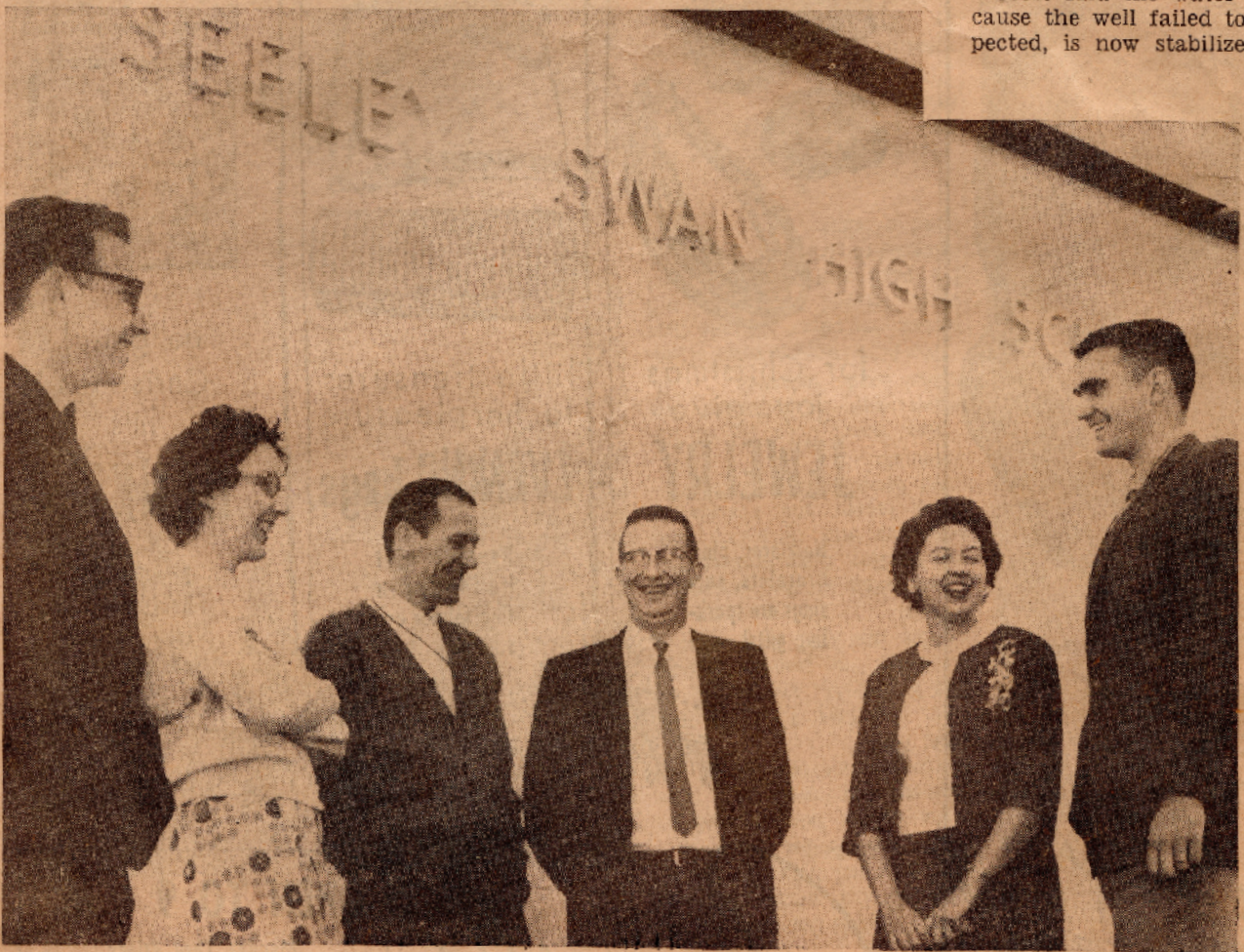
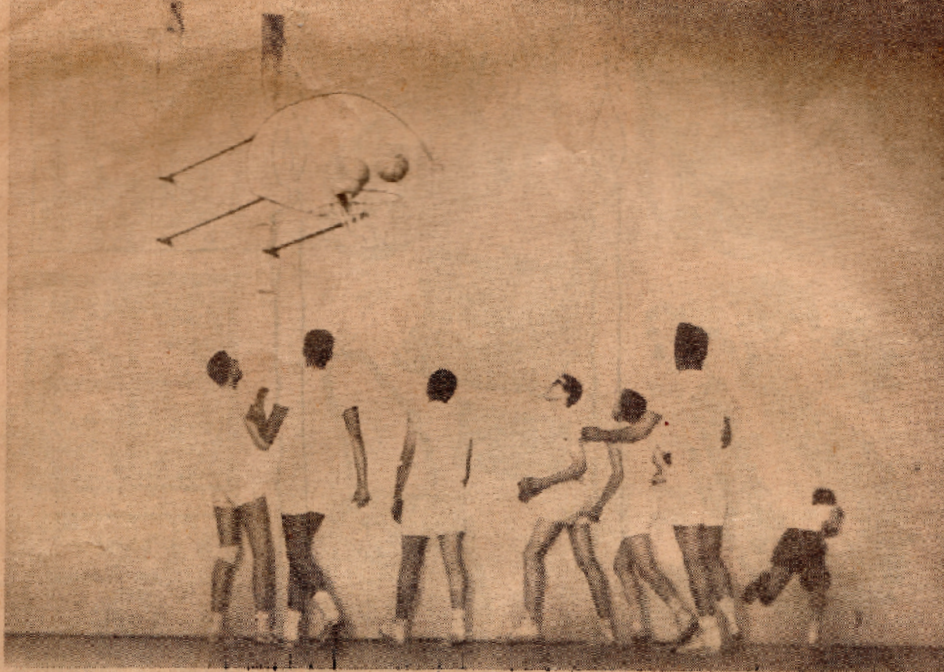
Everything at Seeley-Swan is accomplished after the buses arrive before they leave in the afternoon. Scholastic sports, dramatics, and other activities ordinarily are conducted after school.

Scott said the water situation near the well, which caused the well to fail to produce water, is now stabilized.



HAPPINESS is a thing called Seeley-Swan High School. At right, a chemistry class pays close attention in last-year science lab-lecture room. Faculty members (above) are, from left: Marvin Anderson, Mrs. Judy

Dolan, Kim Haines, Principal Roy Scott, Miss Shirley Bandy and Patrick Dolan. Close-knit student-faculty relations stimulate learning process. (Staff Photos by Al Darr)



HAPPINESS is a thing called Seeley-Swan High School. At right, a chemistry class pays close attention in last-ward science lab-lecture room. Faculty members (above) are, from left: Marvin Anderson, Mrs. Judy

Dolan, Kim Haines, Principal Roy Scott, Miss Shirley Bandy and Patrick Dolan. Close-knit student-faculty relations stimulate learning process. (Staff Photos by Al Darr)

ture near Seeley Lake. roundtrip bus rides for over.

As of today, the longest is roughly 40 miles each northern tip of the county and girls travel from the County, about 30 miles, from well within that range.

Principal Roy Scott, who from Washington state brought Seeley-Swan enrollment records.

Scott teaches industrial personally completing work of building north of the main

Miss Shirley Bandy, home teacher, is patiently waiting refrigerator, but otherwise equipped.

Other faculty members English; Kim Haines, social Patrick Dolan, social studies health; and Mrs. Judy Dolan.

Everything at Seeley-Swan is accomplished after the buses arrive before they leave in the afternoon. Scholastic sports, dramatics, ordinarily are conducted after

Scott said the water situation cause the well failed to produce, is now stabilized.