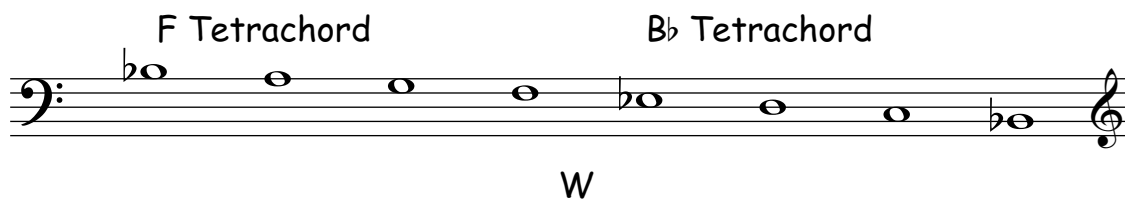


more scale ex. - ANSWERS

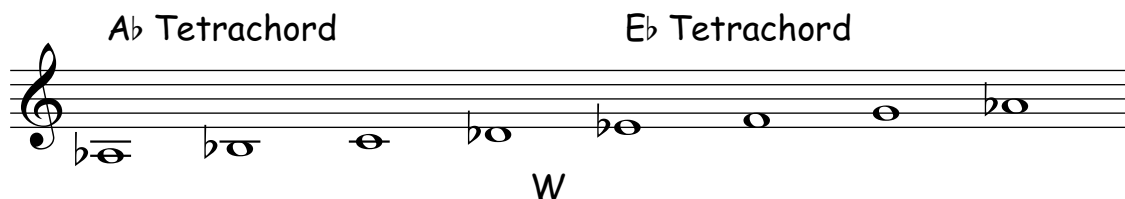
Name and write the following scale one octave using whole notes as indicated.
Name the tetrachords. Indicate the joining whole step with a W below the staff.

- a) scale with the 2nd note
in the scale as C
descending



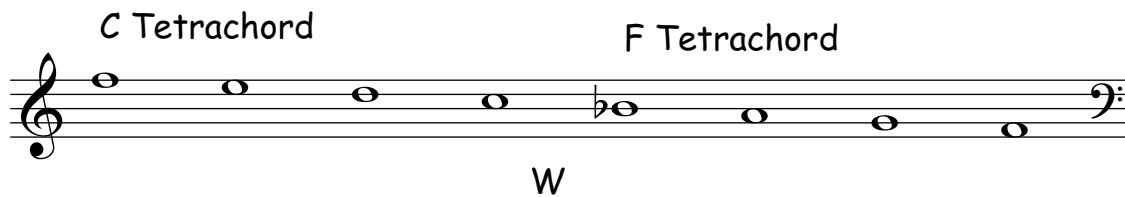
Scale: B \flat +

- b) scale with the 3rd note
in the scale as C
ascending



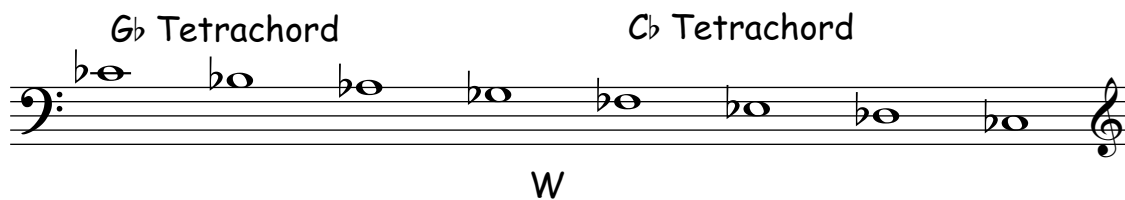
Scale: A \flat +

- c) scale with the 4th note
in the scale as B \flat
descending



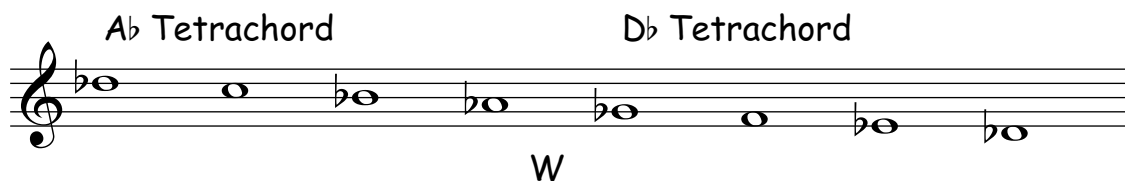
Scale: F+

- d) scale with the 2nd last note
in the scale as B \flat
descending



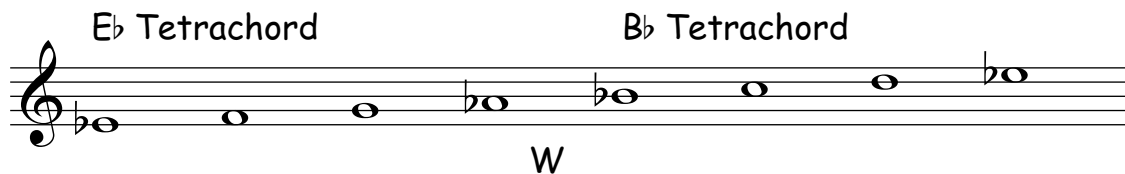
Scale: C \flat +

- e) scale with all flats
except F and C
descending



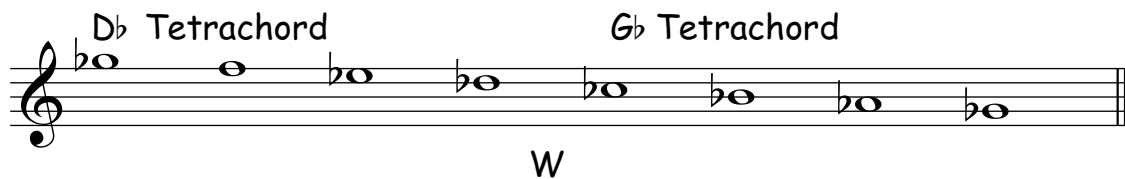
Scale: D \flat +

- f) scale with leading note
as D
ascending



Scale: E \flat +

- g) scale with 2nd note
in the scale as A \flat
descending



Scale: G \flat +