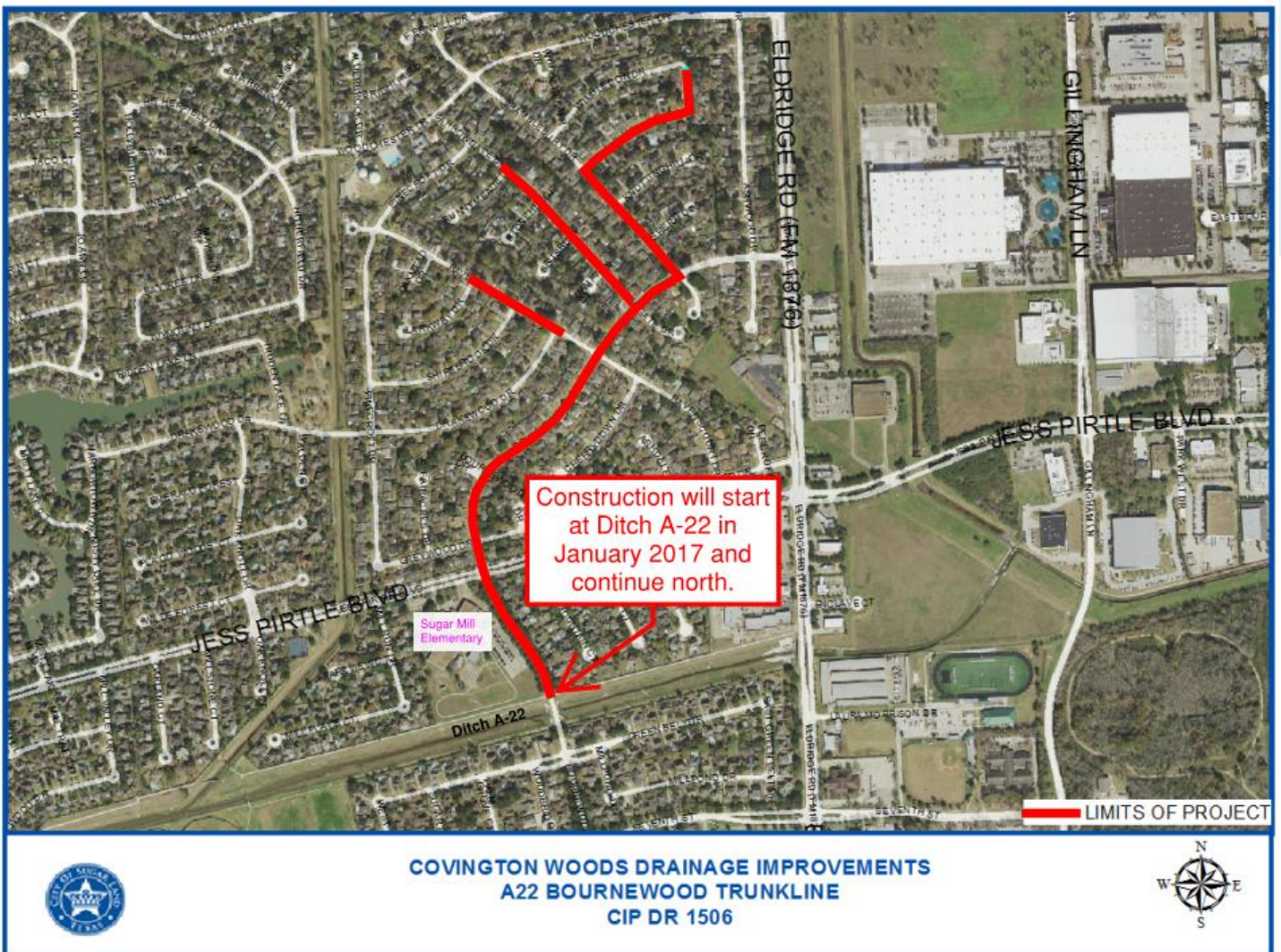




CITY OF SUGAR LAND
Environmental & Neighborhood Services

Covington Woods A-22 Bournewood Project December 2016



Final engineering design for construction of the Covington Wood A22 Bournewood Trunkline Drainage project is complete. The scope of the project includes full or partial replacement of the roadways. The existing water main will be replaced the full length of the project due to age and material type. The proposed A-22 Bournewood Trunk Line project is a significant storm water conveyance project intended to provide a new efficient outfall for much of the Covington Woods neighborhood. The new trunk line is proposed to extend north along Bournewood Drive from Ditch A-22 to the intersection of Bramblebury Drive. Additional improvements extend north along Bramblebury Drive from Bournewood to Brook Hollow where improvements terminate near Wimbledon Drive. The existing storm sewer behind the curb along Barrowgate Drive from Bournewood to Runneymeade, Ravenscourt Drive from Larkway to Drakewood, and Brook Hollow Drive from Bramblebury to Wimbledon will also be removed and replaced with a larger storm sewer with minimal pavement replacement. The proposed drainage improvements include installation of concrete box culverts, storm sewers, new upsized inlets, new pavement and the installation of the new water line and related utility improvements throughout the project area. The following major components are included:

- New efficient outfall located at Ditch A-22.
- Improved drainage capacity with additional inlets and larger storm sewer.
- Full width pavement removal and replacement on Bournewood Drive.
- Partial pavement removal and replacement on Bramblebury Drive.
- Partial pavement removal and replacement on Ravenscourt, Barrowgate and Brook Hollow.
- Replacement of water mains and service lines throughout the project area.
- Replacement of driveways to the street right-of-way throughout the project area.

The project will be constructed in stages consisting of installing drainage and utilities on one half of the roadway at a time while detouring traffic to the remaining half of the roadway during the construction period. Construction will begin with drainage improvements and full pavement replacement on Bournewood Drive from Ditch A-22 and terminating at Bramblebury Drive. Construction will conclude with drainage improvements and partial pavement replacement along Bramblebury, Brook Hollow, Barrowgate and Ravenscourt Drive.

As is typical of these projects there will be inconveniences. Lane reductions required for construction result in traffic delays. Additionally there will be notices given for temporary water service outages as we are replacing the water mains as well. Residents will be encouraged to sign up for construction notifications on the city's web site for updates regarding lane closures and water outages while construction is ongoing. The schedule for this project is as follows:

- Bid project Fall 2016
- Award contract Fall 2016
- Construction 1st Quarter calendar year 2017 with 16 months duration

For more information contact the City of Sugar Land Engineering Department at 281-275-2780. To sign up for email construction notification alerts go to www.sugarlandtx.gov/notifyme.