

Amberlux[®] LH Solid State LED Lamp

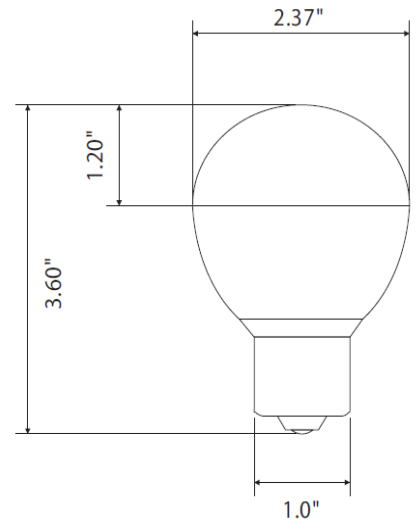
Model 21900



Specifications:

- Low Heat (LH) Thermal Control
- Input Voltage: 90-240 AC
- Lumen Intensity: 200 lm
- CRI: >80
- Color Temperature: 3000K
- Beam Angle: 220°
- Base: E27
- Life Expectancy: >35,000 Hours
- Warranty Period: 3 Years
- Shatterproof
- Power Consumption: 3.5W
- Florida Wildlife Commission Certified

Dimensional Data:



Wildlife Lighting utilizes state-of-the-art technology to develop thermal management for the Amberlux LH solid state lamp. LED life span is highly dependent on temperature with cooler operation extending useful life. Heat and the effect on LED life expectancy is particularly important in southern climates.

PROBLEM

Disorientation from artificial lighting causes thousands of sea turtle hatching deaths each year in Florida and it is a significant marine turtle conservation problem



SOLUTION

Decrease light pollution affecting sea turtles



Wildlife Lighting, LLC.

P.O. Box 66, Perkasio, PA 18944

Ph: (866) 583-3768 Fax: (215) 257-1385 E-mail: sales@wildlifelighting.com

October 2013