

Estate[™] Traverse Rods

Collection Overview

Estate™ Traverse Rods Collection Updates for 2020

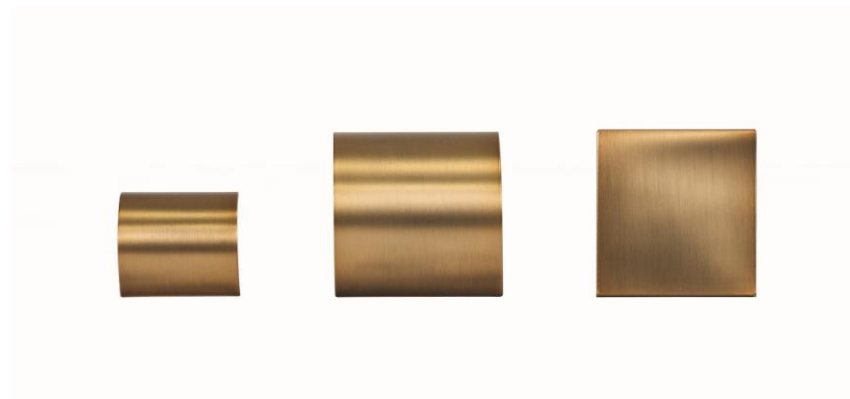
Estate™ Traverse Rods Collection Updates for 2020

- Buckingham® and Designer Metals™ Estate Traverse Rods now available in 1 3/8" size.
- New Varia fascia for Estate Traverse Rods



Estate™ Traverse Rods Collection Updates for 2020

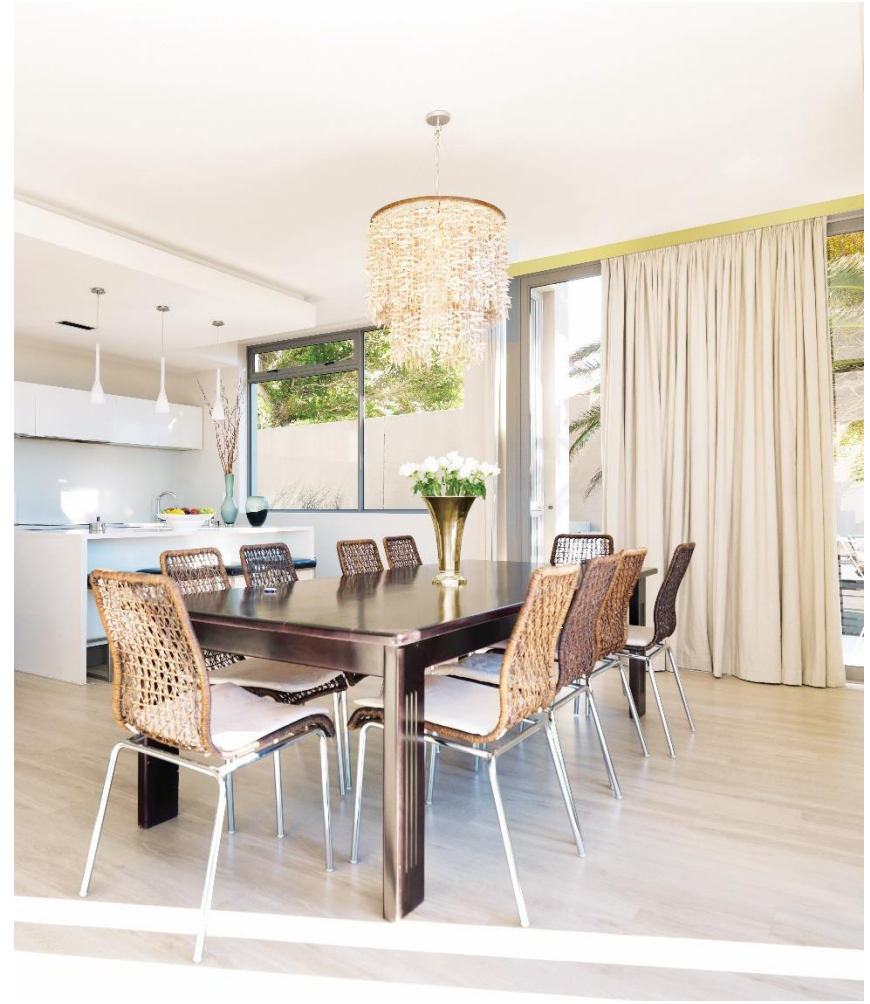
- New 2” fascia for Estate Traverse Rods for Designer Metals
 - Polished Nickel also available.
 - Fascia is now sold in 8 foot lengths in both the 1 3/8” size and 2” size
 - Finish consistency improvement across components due to new finishing process.
 - Opportunity to limit freight costs and damages in shipping by splicing.
- New Keystone to cover seam in Estate Traverse Rods.
 - Rounded in 1 3/8” & 2” sizes and Flat in 2” size.



Estate™ Traverse Rods Collection Overview

Estate™ Traverse Rods

- Features
 - Heavy duty weight bearing track
 - Track color coordinated to fascia
 - Custom lengths up to the nearest 1/8"
 - Control options include Cord, Hand/ Baton and Briza™ Motorization



Estate™ Traverse Rods

- Great for traversing heavy weight draperies
 - Pleated
 - Ripplefold™
 - Custom rod configurations to the nearest 1/8"



Estate™ Traverse Rods

- Available in the Buckingham®, Designer Metals™, Wood Trends™ Varia and Chroma Collections
 - New additions for 2020
 - 1 3/8" Designer Metals
 - 1 3/8" Buckingham
 - 2" Varia



Estate™ Traverse Rods with Buckingham®

- 1 3/8" Diameter Configurations
 - Pleated
 - 16mm ball bearing carriers/slides
 - Three holes for easy pin adjustment
 - Carriers color coordinate to the fascia
 - Ripplefold™
 - Two sided color coordinated pendants
 - Wheeled carrier base
 - Four fullness factors; 60%, 80%, 100% and 120%



Estate™ Traverse Rods with Buckingham®

- 2" Diameter Configurations
 - Pleated with rings
 - 25mm ball bearing carriers/slides
 - Pleated
 - 16mm ball bearing carriers/slides
 - Three holes for easy pin adjustment
 - Carriers color coordinate to the fascia
 - Ripplefold™
 - Two sided color coordinated pendants
 - Wheeled carrier base
 - Four fullness factors; 60%, 80%, 100% and 120%



Estate™ Traverse Rods with Designer Metals™

- 1 3/8" Diameter Configurations
 - Pleated
 - 16mm ball bearing carriers/slides
 - Three holes for easy pin adjustment
 - Carriers color coordinate to the fascia
 - Ripplefold™
 - Two sided color coordinated pendants
 - Wheeled carrier base
 - Four fullness factors; 60%, 80%, 100% and 120%



Estate™ Traverse Rods with Designer Metals™

- 2" Diameter Configurations
 - Pleated with rings
 - 25mm ball bearing carriers/slides
 - Pleated
 - 16mm ball bearing carriers/slides
 - Three holes for easy pin adjustment
 - Carriers color coordinate to the fascia
 - Ripplefold™
 - Two sided color coordinated pendants
 - Wheeled carrier base
 - Four fullness factors; 60%, 80%, 100% and 120%



Estate™ Traverse Rods with Wood Trends™

- 1 3/8" & 2" Diameter Configurations
 - Pleated
 - 16mm ball bearing carriers/ slides
 - Three holes for easy pin adjustment
 - Carriers color coordinate to the fascia
 - Ripplefold™
 - Two sided color coordinated pendants
 - Wheeled carrier base
 - Four fullness factors; 60%, 80%, 100% and 120%



Estate™ Traverse Rods with Varia

- New for 2020
- Twelve new exciting colors and patterns



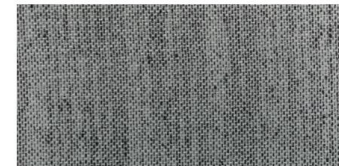
Pure Gold



Pure Silver



Hem Thames



Hem Tetons



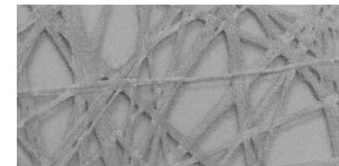
Hem Ashland



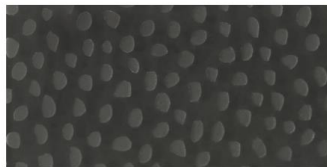
Flock Cotton 2



Connection Mini Pure



Connection Mini Gray



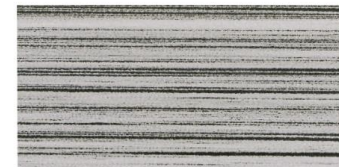
Hint Spotted



Fray Baltic



Fray Smoke



Strand White

Estate™ Traverse Rods with Varia

- New for 2020
- Configurations
 - Pleated
 - 16mm ball bearing carriers/ slides
 - Three holes for easy pin adjustment
 - Carriers color coordinate to the fascia
 - Ripplefold™
 - Two sided color coordinated pendants
 - Wheeled carrier base
 - Four fullness factors; 60%, 80%, 100% and 120%

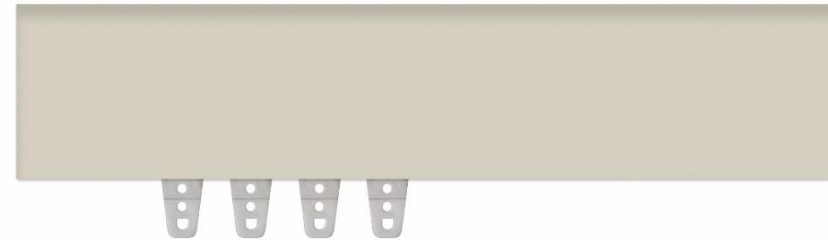


Estate™ Traverse Rods with Chroma

- Configurations

- Pleated

- 16mm ball bearing carriers/ slides
 - Three holes for easy pin adjustment
 - Carriers color coordinate to the fascia

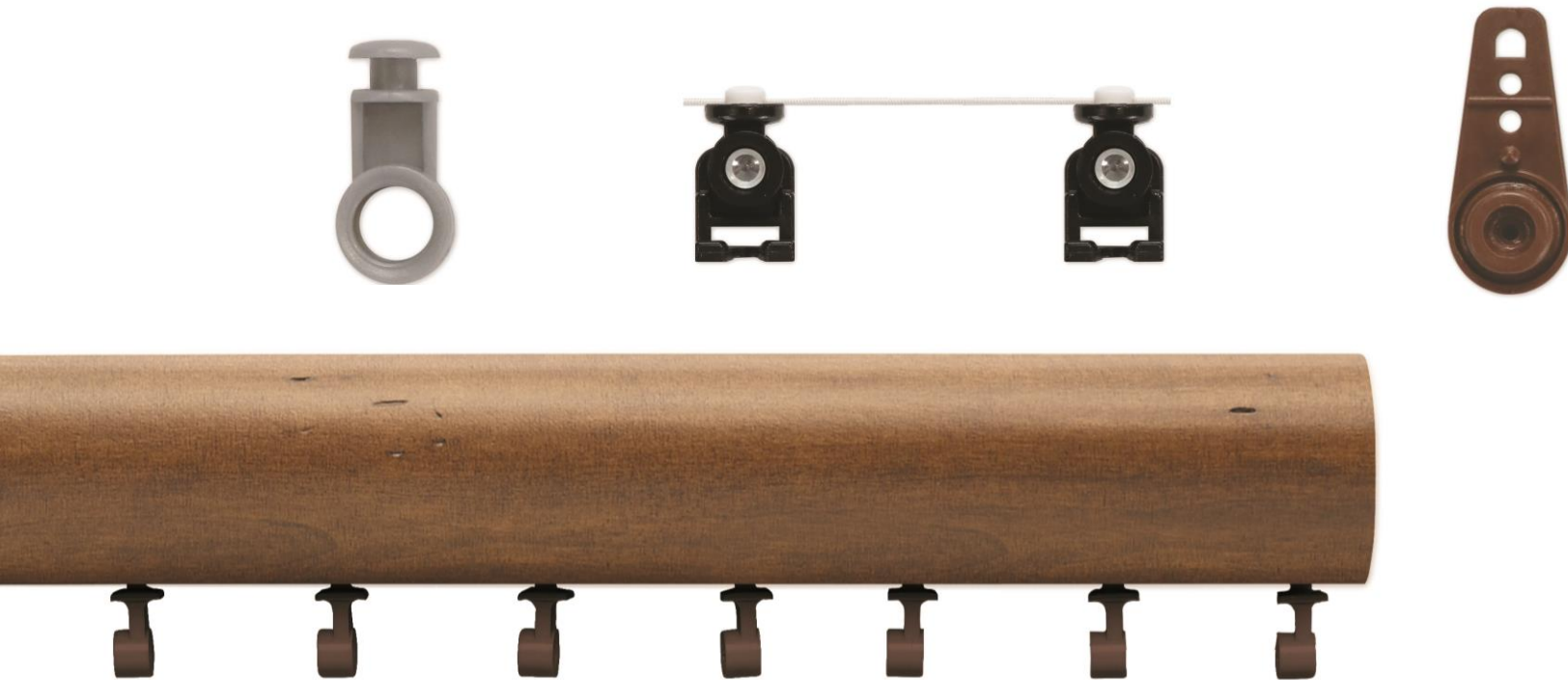


- Ripplefold™

- Two sided color coordinated pendants
 - Wheeled carrier base
 - Four fullness factors; 60%, 80%, 100% and 120%

Estate™ Traverse Rods

- All Estate Traverse rods use color coordinating components to allow for a more design friendly application.
 - Cords, tension devices, carriers and track are all color coordinated.



Estate™ Traverse Rods

- Order form located at the end of the Estate™ Traverse Rod section of the price list

Estate™ 1 3/8 inch & 2 inch Decorative Traverse Rods Order Form

ORDER DATE ACCOUNT # P.O. # SIDEMARK

Account Information

COMPANY NAME

CONTACT FULL NAME

EMAIL PHONE

SHIP TO/ATTENTION

ADDRESS

CITY STATE ZIP

Drop Ship Address (if different from above)

NAME OR COMPANY PHONE

ADDRESS

CITY STATE ZIP

Ordering Guidelines

- Use this order form for detailed instructions
- Maximum assembled set width is 16 feet
- Minimum assembled set width is 18 inches
- Designer Metals™ Estate™ Traverse Rods over 8 feet will be spliced. Add price of keystone(s) to order amount to cover splices. See pages 101-103
- Other Estate™ Traverse Rods can be spliced upon request
- Assembled sets do not come with finials and must be purchased separately
- Finials may be selected from the 1 3/8 inch or 2 inch Buckingham®, Designer Metals™ or Wood Trends™ Collections
- For pleated or Ripplefold™ draperies only
- Set includes 4 rings/slides per foot – for additional rings/slides see pricelist
- Any additional rings/slides must be ordered at time of purchase for an additional cost
- For mounting options, see page 93-94
- Rod manufactured to specific width dimensions cannot be cut down after produced

*Assembled sets do not include finials. Additional rings/slides can be ordered at a charge. Otherwise, a standard set includes 4 rings/slides per foot.

APPENDIX

/ 163

Estate™ 1 3/8 inch & 2 inch Decorative Traverse Rods Order Form

ORDER DATE ACCOUNT # P.O. # SIDEMARK

1. Order Specifications

ORDER QTY PRODUCT NUMBER LENGTH (inches)
(18 inch minimum) (24 foot maximum)

Draw Preference

ONE-WAY DRAW | STACK LEFT
 ONE-WAY DRAW | STACK RIGHT
 TWO-WAY DRAW

Control Location

LEFT RIGHT

Cord Length

CORD LENGTH (inches)
(minimum 60 in.)

Control Type

CORD HAND BATON
 BRIZA™ MOTORIZATION
 BRIZA™ MOTORIZATION WITH NEO SMART CONTROLLER
 BRIZA™ MOTORIZATION WITH SOMEFY™ MOTOR ADAPTER

Control Location

LEFT RIGHT

Ripplefold™ Fullness

120% 100%
 80% 60%
 41%* 61%*

Return Size

31/2" 41/2" 61/2"

Mount Style

WALL MOUNT CEILING MOUNT

Drapery/Master Carrier Style

RIPPLEFOLD™ | OVERLAP
 RIPPLEFOLD™ | BUTT MASTER
 PLEATED | OVERLAP

Extra Parts

RINGS
 SLIDES
 BRACKETS
 KEYSTONES

Total Pricing
(Be sure to add price of any accessory requested)

TOTAL ROD COST \$
 TOTAL COMPONENT COST \$
 PACKING FEE** \$
 TOTAL COST \$

Keystone color

Splicing Instructions

If a splice is preferred on your Estate™ Traverse Rod, indicate location on splice instructions below.
 Please note that Designer Metals™ Rods over 8 feet are automatically spliced in the center unless instructions are given below.

Coordinating Accessories

Please be sure to order all accessories needed including remote controls for Briza™ Motorized Estate™ Traverse Rods.

ORDER QTY	PRODUCT NUMBER	PART COST	ORDER QTY	PRODUCT NUMBER	PART COST
		\$			\$
ORDER QTY	PRODUCT NUMBER	PART COST	ORDER QTY	PRODUCT NUMBER	PART COST
		\$			\$
ORDER QTY	PRODUCT NUMBER	PART COST	ORDER QTY	PRODUCT NUMBER	PART COST
		\$			\$



@kirsch

Experience more, visit kirsch.com