

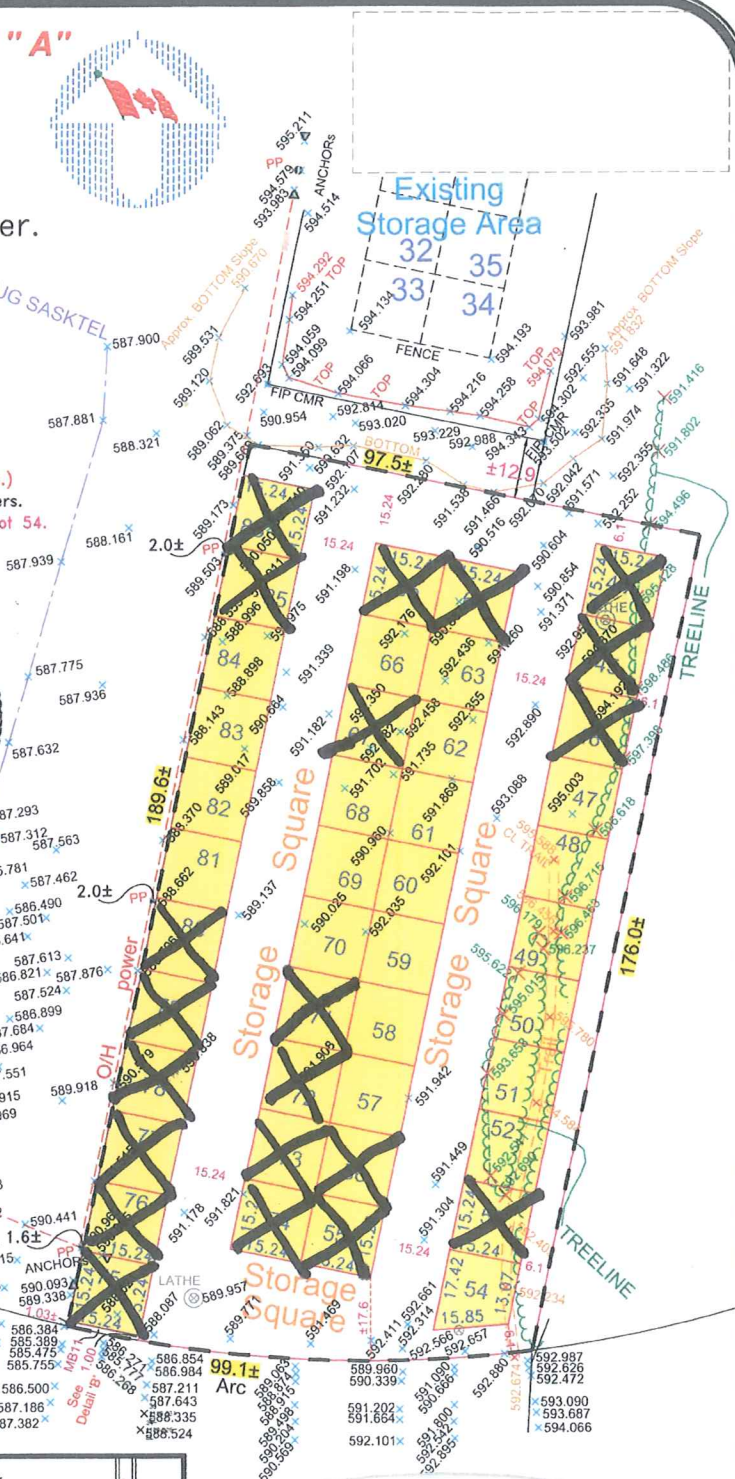
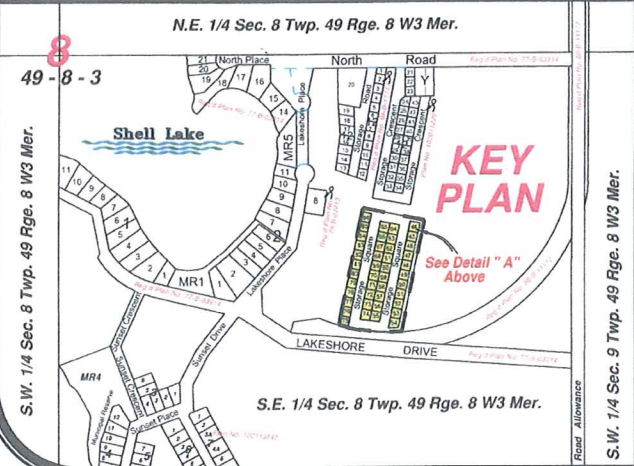
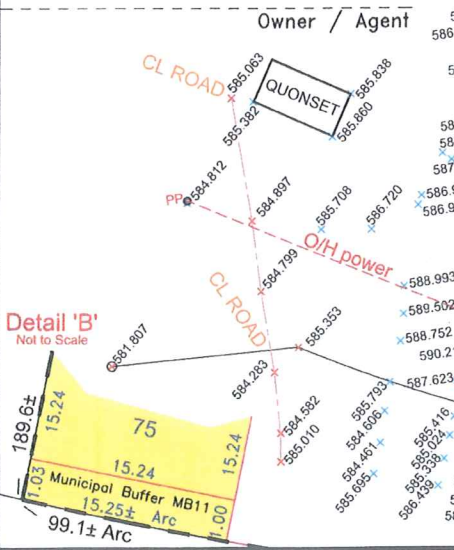
PLAN
SHOWING PROPOSED
SUBDIVISION
of part of

S.E. 1/4 SEC. 8
Twp. 49, Rge. 8, W.3rd Mer.
Resort Village of Echo Bay
RM of Spiritwood, No. 496
Saskatchewan
Scale 1:1000

Detail "A"



All measurements are in metres and decimals thereof.
Area to be subdivided is outlined in a black bold dashed line, and contains ±1.816 ha. (±4.49 Ac.)
Distances are approximate and may vary by ±1 meters.
ALL LOTS ARE 15.24 X 15.24 (50' X 50') except Lot 54.
Date of preliminary survey:- January 27th 2017
Plan revised:- January 30th 2017
Plan revised:- March 8th 2017
Plan revised:- March 13th 2017



George, Nicholson Franko, & Associates
LAND SURVEYORS SASKATCHEWAN SINCE 1910
Land Surveyors • Global Positioning Systems
Celebrating 107 Years of service to the Province of Saskatchewan
A Division of Meridian Surveys
Saskatoon, Canada
File No. ~ SG17016StorageSquare.dwg
Drawn by: ~ Art Mark - January 30th 2017
Plan revised: - March 8th 2017
Plan revised: - March 14th 2017